



# Schmidt's Farm

2023 Open Space and Recreation Plan Update



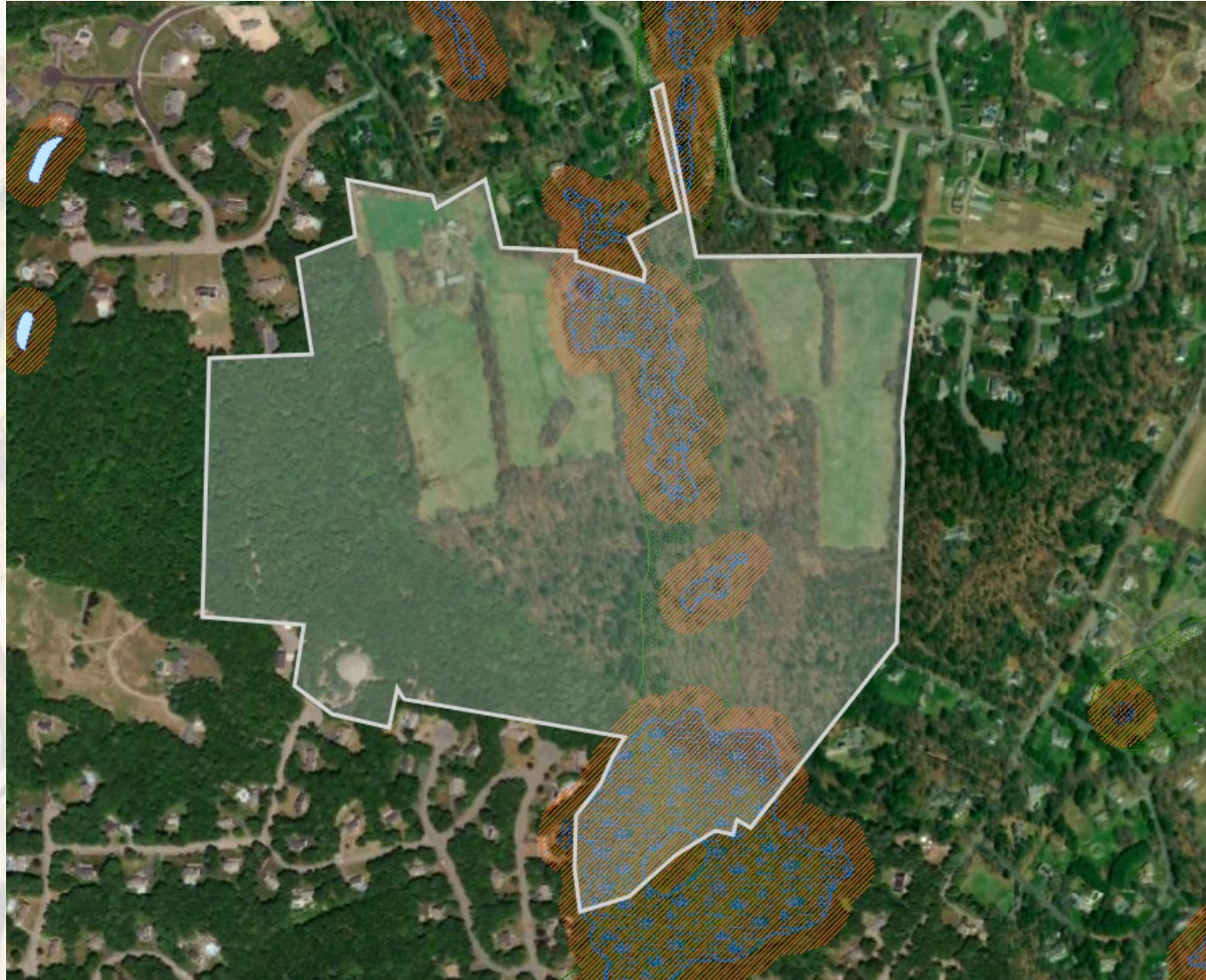
# Schmidt's Parcel: "What it is"

- 2016 Open Space Master Plan top priority
  - Goal 2, Objective 2.2
  - 2017 Chapter 61 Analysis
- Transition period: current owners have until July 1, 2023 to maintain residence in the current structure
- Additional 60-day option
- Will maintain property in the interim





# Schmidt's Parcel: "What it is"





# Schmidt's Farm: "What it was and continues to be"

A legacy

A family

A memoir

A testimony

A culture

A memory (many!)



# NORFOLK SOIL CONSERVATION DISTRICT

1955



Conservation Farmers of 1955,  
Arthur Schmidt and Son, Arwid

## OUTSTANDING DISTRICT COOPERATORS OF 1955

Arthur and Arwid Schmidt, a father and son team were awarded a Certificate of Merit by the Norfolk Soil Conservation District at their Annual Election Meeting in Walpole and the Certificate of the Massachusetts Department of Agriculture at the Union Agricultural Meeting in Worcester for outstanding accomplishments in soil and water conservation.

Arthur came from Latvia to Boston in 1905. His first job in the U. S. was that of a machinist even though he was farming in Latvia. In 1914 he bought the 115 acre farm on Prospect Street in Franklin and began the slow process of converting it to a productive enterprise. The newly bought land consisted of 17 acres of rocky pasture and 98 acres of woods.

His first operation was land clearing and wood harvest cutting. Some chestnut harvested was used to build the present homestead.

Little by little Arthur and Arwid cleared enough land to begin dairying, later adding poultry and planting apple trees.

When the Soil Conservation District came into being Arthur and son utilized its services; in 1950 he signed an agreement with the District and began on a planned soil and water conservation program.

For the outstanding work done on improvements and in using the resources of the farm wisely and without waste, taking into consideration the land's capabilities, the Schmidts are recognized both by the District and the Massachusetts Department of Agriculture.

Construction began near the end of 1962, as confirmed by then-executive-director Lon Smith's late-October statement to *The Westwood Press*. He announced that the U.S. Soil Conservation Service<sup>5</sup> and Norfolk County Soils Conservation District would support the design and construction of the 1,200-foot dam. Great care was taken to perform water drainage studies for the 60-acre pond, and engineer Henry Ritzer was personally commended for generously lending his time and expertise to the endeavor.















1936 Brooder House



9/21/1938 Hurricane Damage



Roof off 36 House Rooster Range

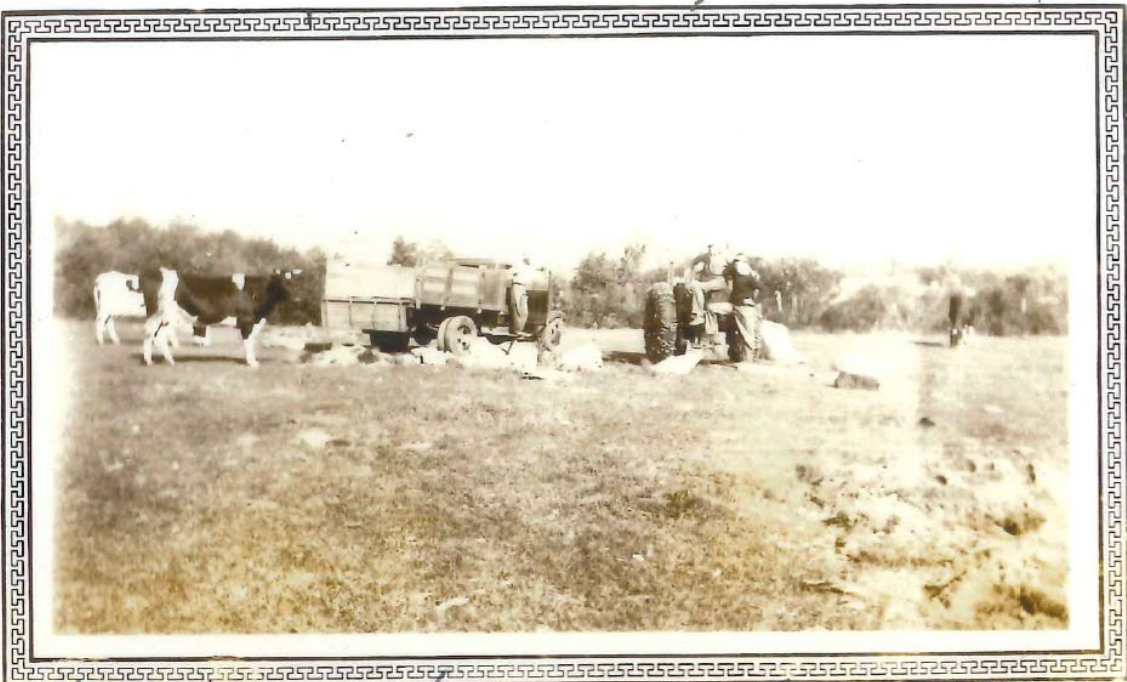


9/21/1938 Hurricane (1936 House)



9/21/1938 Damage to Colony Houses

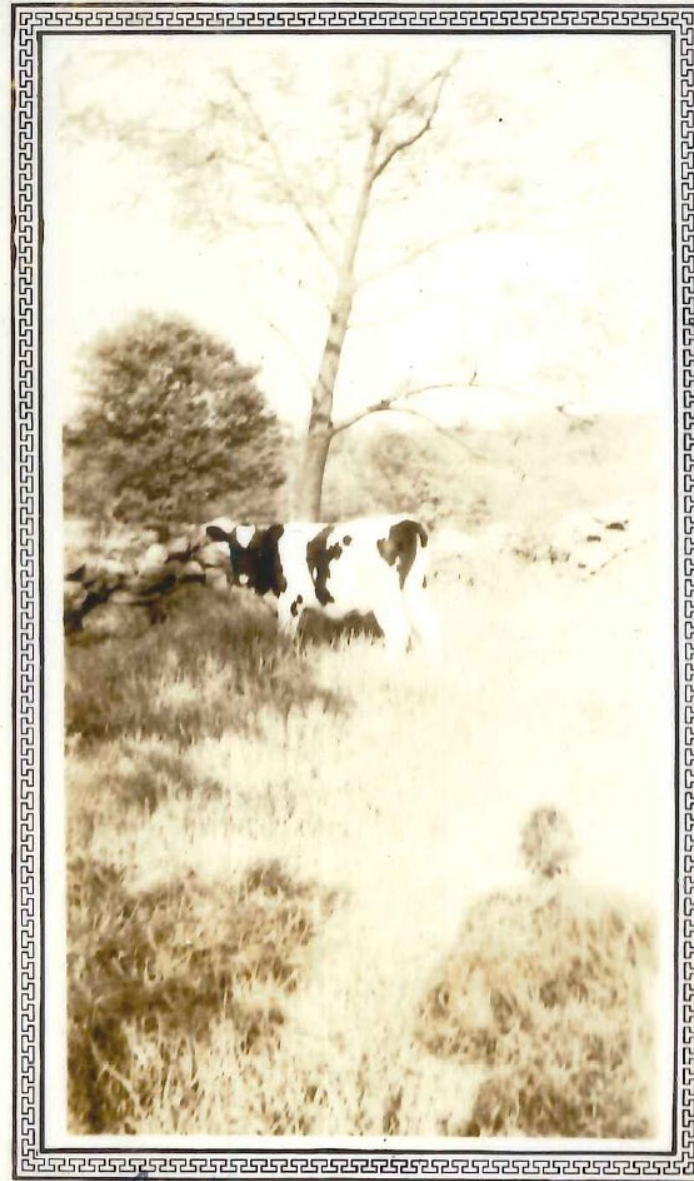




Working on stones Elm Field 1937



Haying time 1937 Wald & Arby



"Baby" 1937





The Bar 9/26/1937



Picnic on farm 9/26/1937

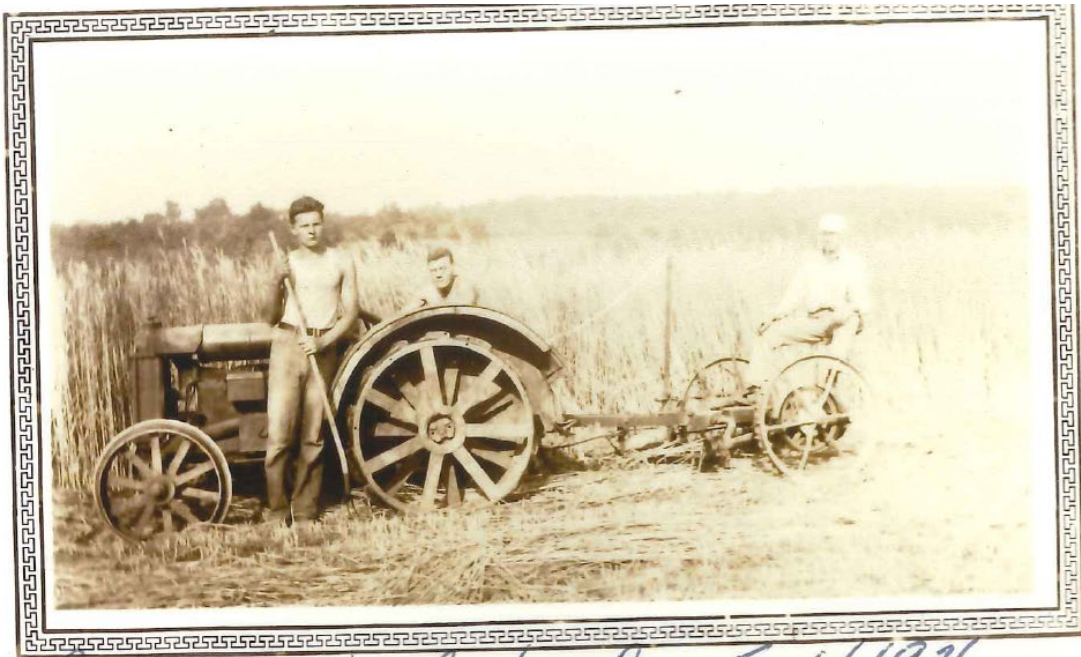


Sweet Corn for Market 1934



Free Range Chickens 1937





Bob, Arwid & Bud in Rye Field 1936



Apple Blossom 1936



Bruno June 1932



5/30/1936 Art & Julia's Wedding



Art, Julia, Margaret, Charlie







1932 Buddy



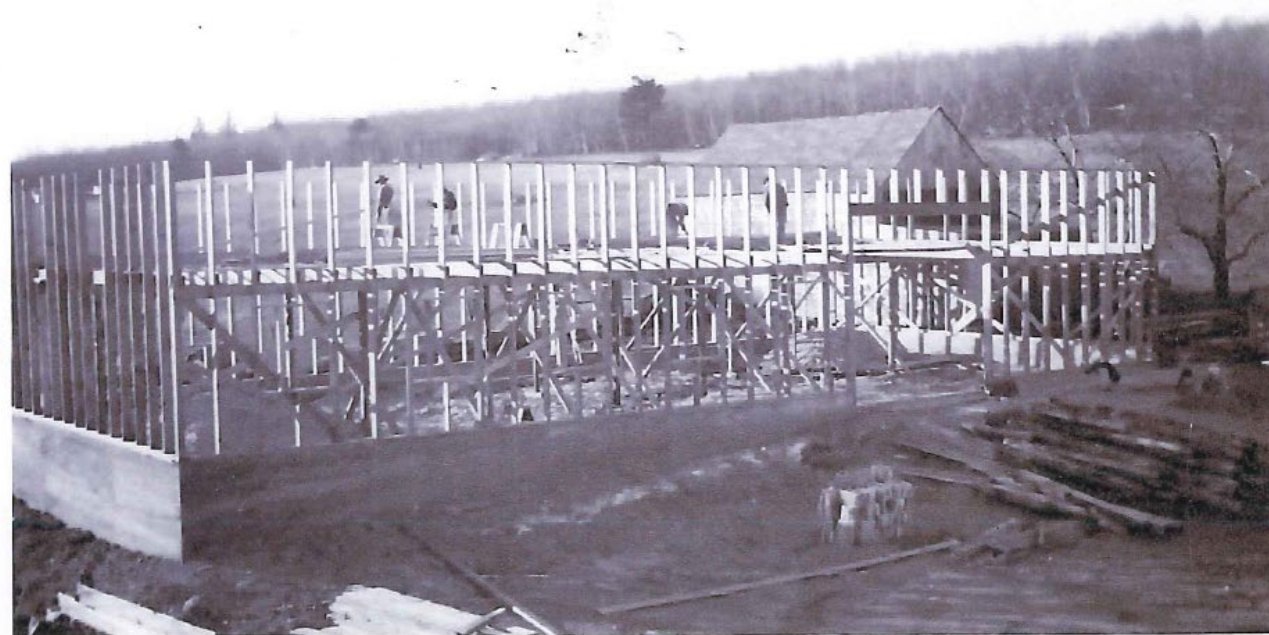
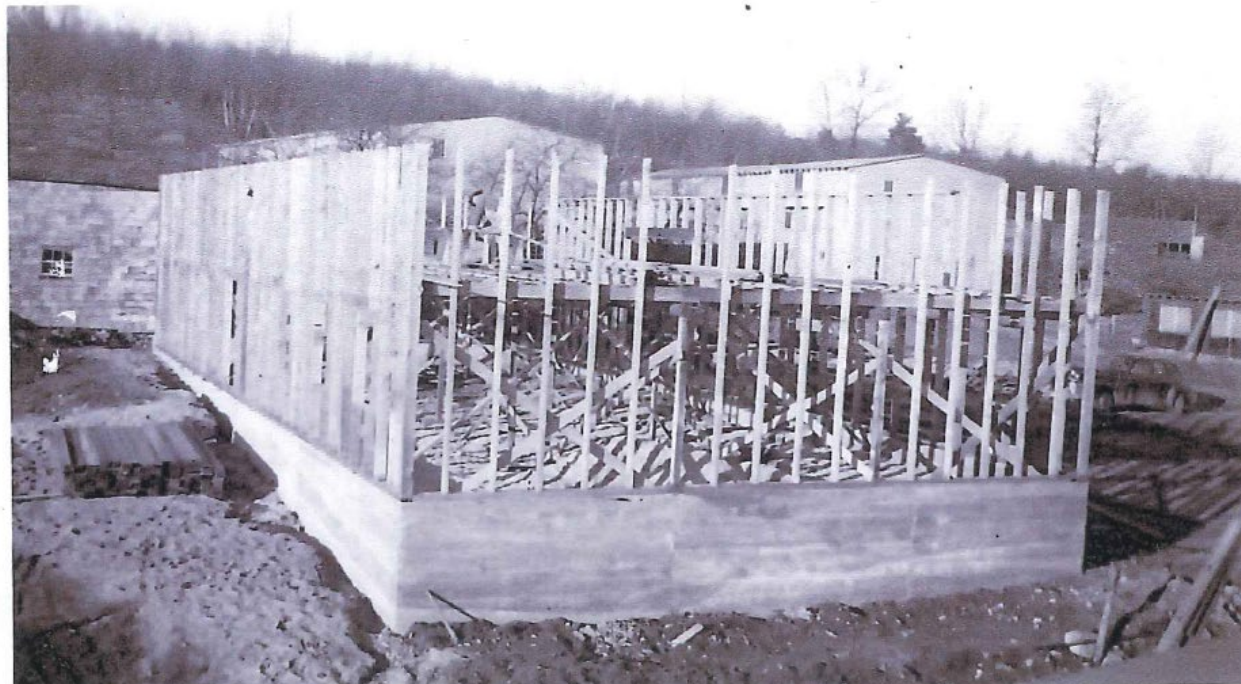
1935 Prince



One of the largest farm barns in the district is being completed at the Arthur Schmidt farm on Prospect street, and the shingling and lightning protection to be completed within a few weeks will finish the construction.

The barn, 74 by 34, is 32 feet high, and upon completion, will house 20 cows, a large apple cold storage system, grainery, and 74 tons of hay.

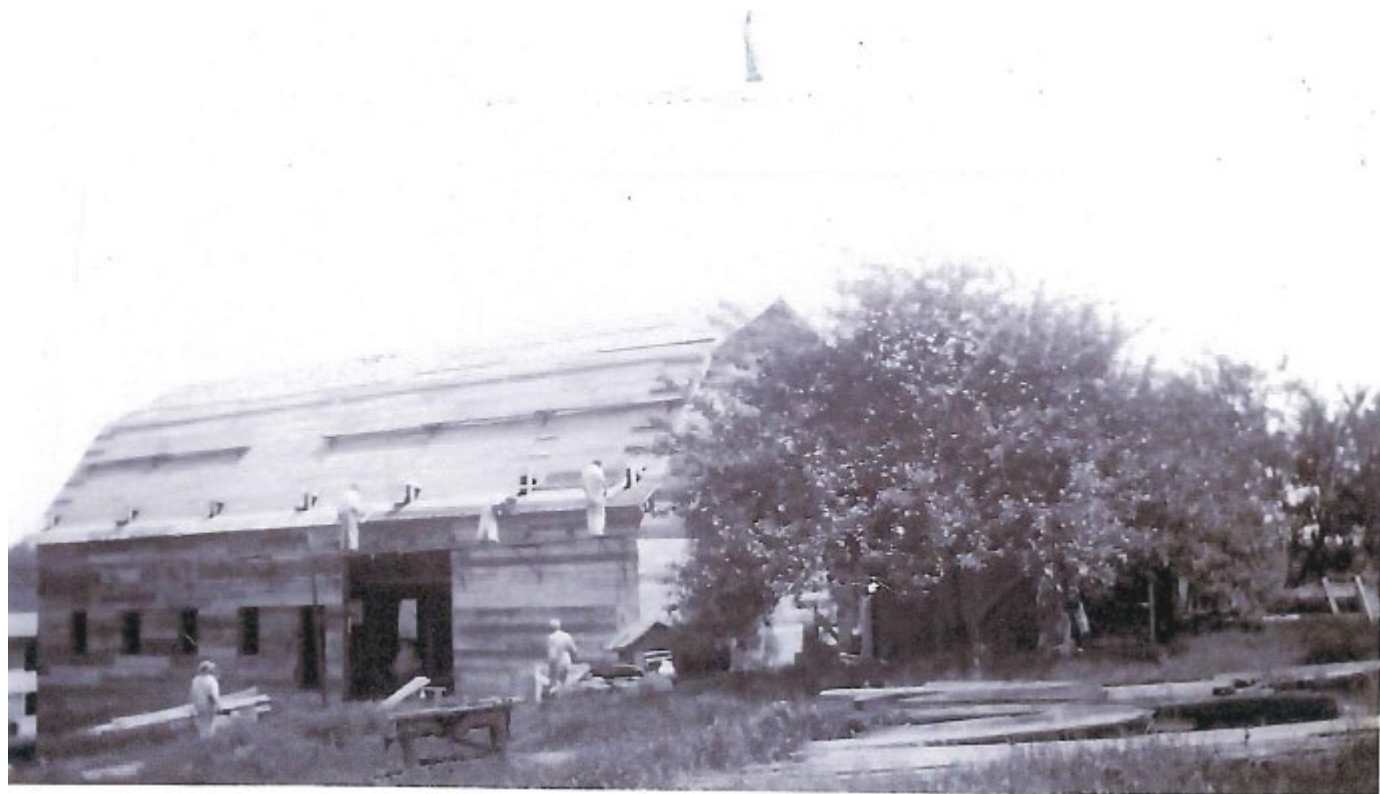
Birds from the strongest























































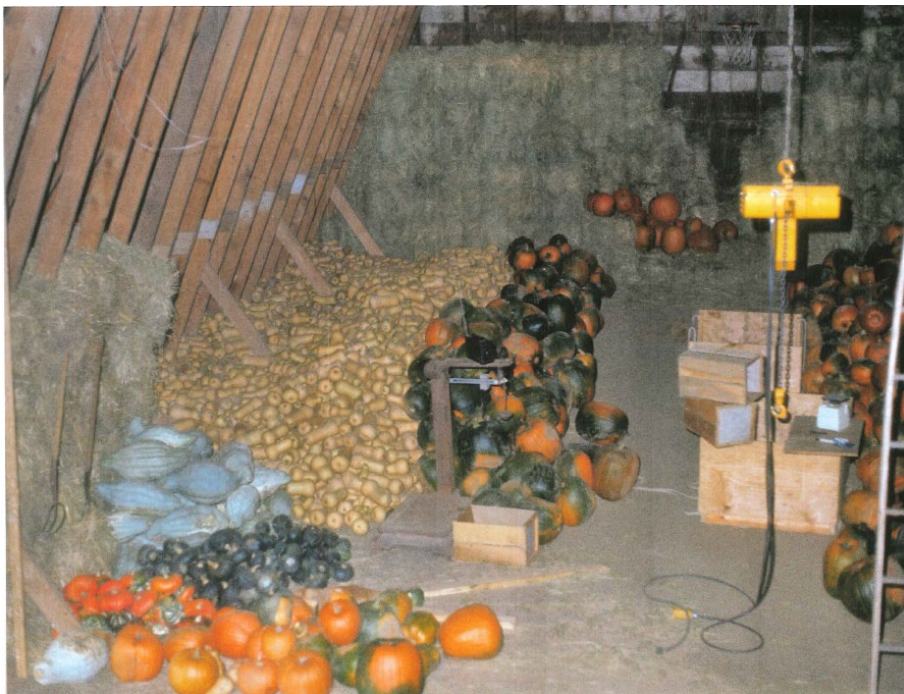














# Schmidt's Farm: "What it could be"

- Schmidt Farm is one of the last and largest contiguous parcels of Open Space in Town – along the Pan Mass Challenge Route
- While management decisions are far from complete, one can envision a dedicated part-time caretaker position
- Potential leasing opportunities
- Potential CSA opportunities
- Potential community garden
- Potential for pollinator pastures, meadows, hiking trails, etc.



# Schmidt's Farm: "What it could be"

- Connection to additional 26 acres
- Town will attempt to keep the barn
- Town to demolish the existing home
- Potential access routes (starred) include Oakridge Drive, Tia Place, Bald Hill Drive, Prospect Street, and Nicholas Drive
  - All would require private negotiations with passive recreation only at this point
  - Nothing definitive

