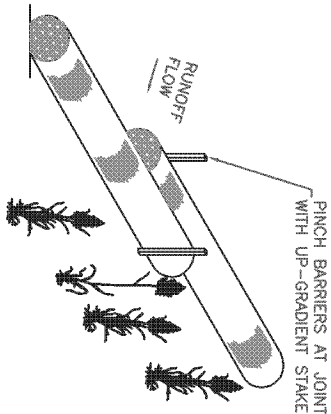
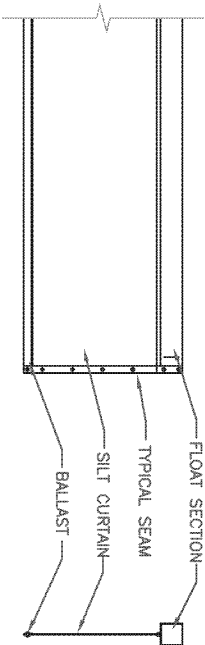




- NOTES FOR COMPOST FILTER SOCK INSTALLATION:
1. 100% BIODEGRADABLE BURLAP SOCK FILLED WITH WEED & WEED-SEED FREE COMPOST.
 2. EMBED STAKES MINIMUM OF 12" DEEP ON DOWN-GRADENT SIDE OF FILTER SOCK.
 3. MINIMUM 24" OVERLAP AT JOINTS.
 4. SILT SHALL BE REMOVED WHEN 1/3RD OF VERTICAL HEIGHT IS OBSTRUCTED BY TRUCK, USE ALTERNATIVE METHOD WHICH CAN BE CARRIED BY HAND.
 5. FOR WORK AREAS NOT ACCESSIBLE BY TRUCK, USE ALTERNATIVE METHOD WHICH CAN BE CARRIED BY HAND.

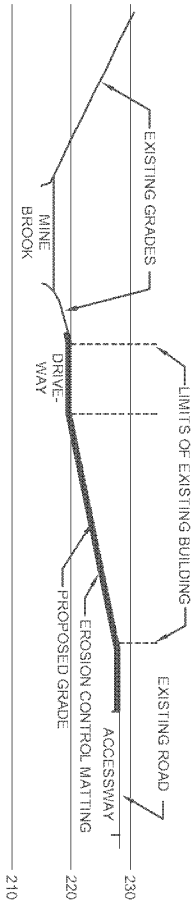


EROSION CONTROL BARRIER DETAIL
NOT TO SCALE

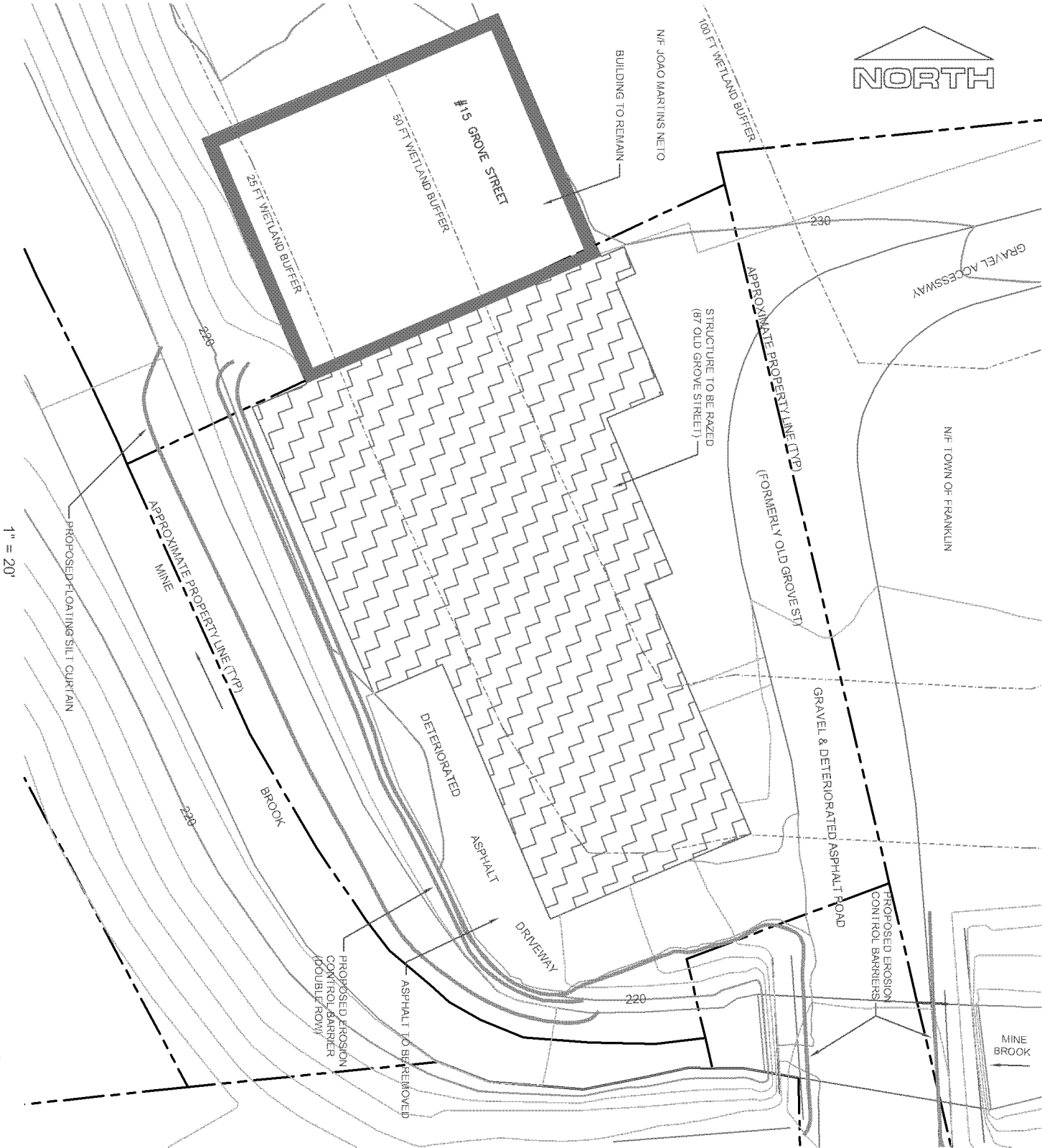


1. FLOATING SILT CURTAIN SHALL BE INSTALLED TO PREVENT ANY DEMOLITION DEBRIS FROM ENTERING MINE BROOK.
2. CONTRACTOR TO VERIFY CONDITIONS AND REQUIREMENTS PRIOR TO INSTALLATION.
3. FLOATING SILT CURTAIN TO BE INSTALLED AND ANCHORED IN ACCORDANCE WITH MANUFACTURER'S RECOMMENDATIONS.

FLOATING SILT CURTAIN DETAIL
NOT TO SCALE



PROPOSED FINAL GRADING SECTION
NOT TO SCALE



Attachment 1B

CONSTRUCTION SEQUENCE

1. DISPLAY DEP SIGN.
2. INSTALL EROSION CONTROL BARRIERS AND FLOATING SILT CURTAIN IN ACCORDANCE WITH ORDER OF CONDITIONS AND PLAN.
3. PROVIDE ENGINEERS APPROVAL LETTER FOR WETLANDS PROTECTION.
4. REMOVE HAZARDOUS MATERIALS FROM BUILDING TO BE RAZED.
5. DEMOLISH BUILDING AND SEPARATE SALVAGEABLE MATERIAL AND WASTE FOR DISPOSAL.
6. REMOVE STOCKPILES AND DEBRIS AS APPROPRIATE.
7. CRUSH CONCRETE AND MASONRY AS APPROPRIATE.
8. BACKFILL AND/OR GRADE SITE WITH APPROVED FILL MATERIALS.
9. GRADE AND COVER DISTURBED AREAS WITH LOAM AND SEED AND EROSION CONTROL MATTING.
10. REQUEST FINAL INSPECTION FROM CONSERVATION COMMISSION.
11. REMOVE EROSION CONTROL BARRIERS AND FLOATING SILT CURTAIN.

NOTES

1. OLD GROVE STREET BRIDGE (SOUTH OF THE SITE) HAS NOT BEEN LOAD RATED. ACCESS SITE VIA GROVE STREET TO THE EAST.
2. THE CONTRACTOR IS RESPONSIBLE TO IDENTIFY, LOCATE AND DISCONNECT UTILITIES AND INTER-CONNECTIONS BETWEEN BUILDINGS.
3. THE STRUCTURE AND BUILDING, LABELED AS 15 GROVE ST, IS PRIVATELY OWNED AND NOT TO BE DEMOLISHED. THE CONTRACTOR IS RESPONSIBLE, TO PROTECT COMMON WALLS, RESTORE DAMAGE, AND TO EFFECT NECESSARY REPAIRS RESULTING FROM WORK ON THE NEIGHBORING BUILDING.
4. TOWN OF FRANKLIN GIS DATA, BASED ON AERIAL PHOTOGRAMMETRY, WAS UTILIZED TO ESTABLISH WETLANDS OFFSETS. FLAGGING FOR THIS PROJECT WAS NOT PERFORMED.
5. ANY CONCRETE OR MASONRY TO BE USED AS FILL SHALL BE CRUSHED TO BE NO LARGER THAN THREE INCHES.
6. ALL DISTURBED AREAS TO BE FILLED AND GRADED IN ACCORDANCE WITH PLAN.



ENGINEERING DIVISION
TOWN OF FRANKLIN
DEPARTMENT OF PUBLIC WORKS

Wetlands Protection Plan
Notice of Intent to Demolish Building #2
Former Nlu-Style Facility

| PROJECT NUMBER | DATE | PROJECT NO. | SHEET |
|----------------|------------|-------------|-------|
| B. TABERNER | 02.17.2015 | — | 1 |
| DESIGNED BY | DRAWN BY | CHECKED BY | OR |
| MM/WG | WG | MM | 1 |