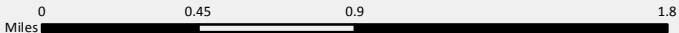
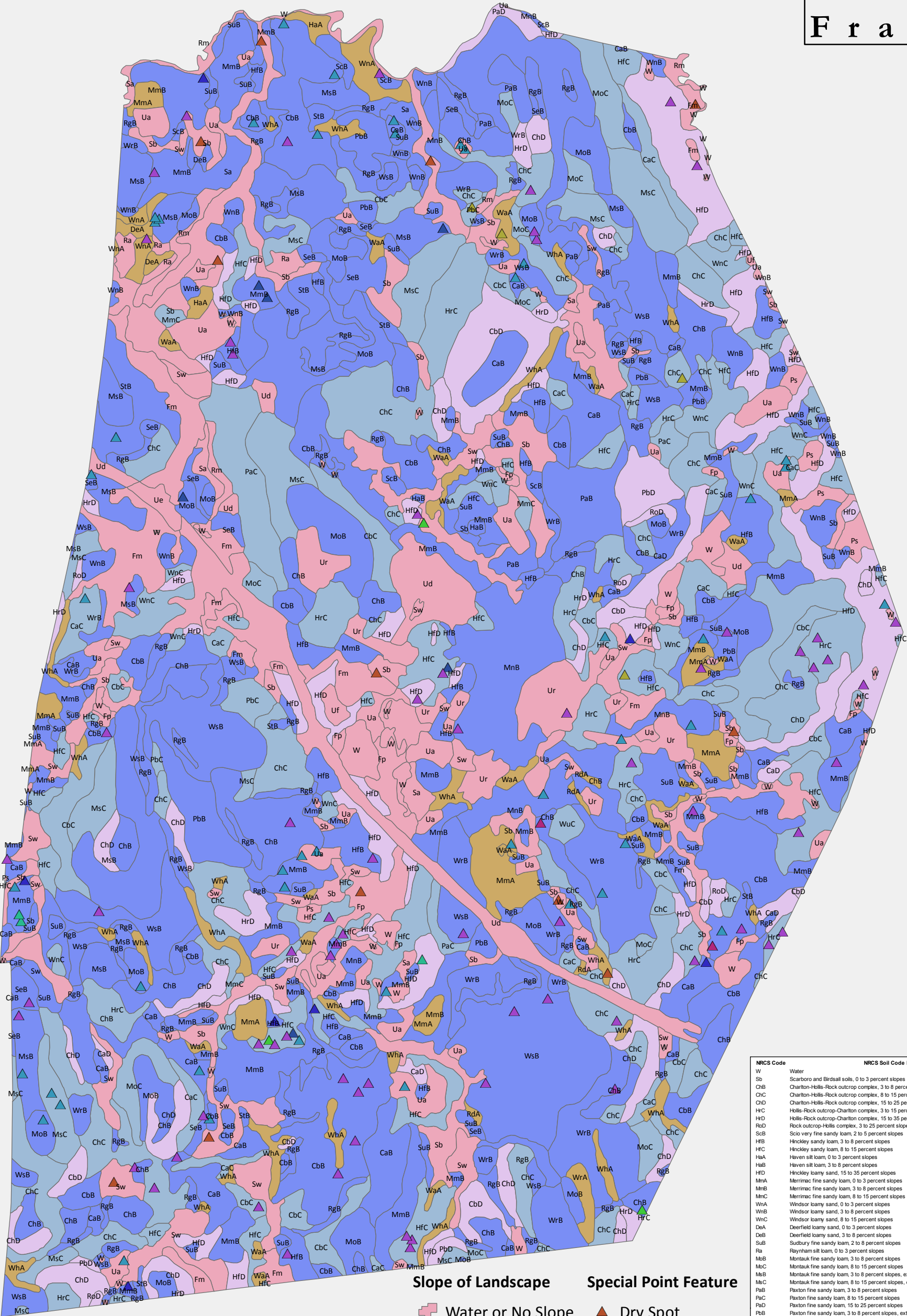


Soils & Geological Features

Map NCH-2



Town of
Franklin



Slope of Landscape

- Water or No Slope
- 0-3%
- 3-8%
- 8-15%
- 15-25%

Special Point Feature

- Dry Spot
- Gravel Pit
- Marsh or Swamp
- Rock Outcrop
- Sandy Spot
- Spoil Area
- Stony Spot
- Very Stony Spot
- Wet Spot

NRCS Code	NRCS Soil Code Description	Total Acreage
W	Water	7245
Sb	Scarboro and Birdsall soils, 0 to 3 percent slopes	25353
ChB	Charlton-Hollis-Rock outcrop complex, 3 to 8 percent slopes	27810
ChC	Charlton-Hollis-Rock outcrop complex, 8 to 15 percent slopes	40356
ChD	Charlton-Hollis-Rock outcrop complex, 15 to 25 percent slopes	14514
HrC	Hollis-Rock outcrop-Charlton complex, 3 to 15 percent slopes	18860
HrD	Hollis-Rock outcrop-Charlton complex, 15 to 25 percent slopes	3796
RdA	Rock outcrop-Hollis complex, 3 to 25 percent slopes	1204
ScB	Scio very fine sandy loam, 2 to 5 percent slopes	1547
HfB	Hinckley sandy loam, 3 to 8 percent slopes	11896
HfC	Hinckley sandy loam, 8 to 15 percent slopes	26258
HfA	Haven silt loam, 0 to 3 percent slopes	932
HfB	Haven silt loam, 3 to 8 percent slopes	267
HfD	Hinckley loamy sand, 15 to 35 percent slopes	27943
MmA	Merrimac fine sandy loam, 0 to 3 percent slopes	7625
MmB	Merrimac fine sandy loam, 3 to 8 percent slopes	35479
MmC	Merrimac fine sandy loam, 8 to 15 percent slopes	818
WnA	Windsor loamy sand, 0 to 3 percent slopes	2344
WnB	Windsor loamy sand, 3 to 8 percent slopes	7217
WnC	Windsor loamy sand, 8 to 15 percent slopes	8151
DeA	Deerfield loamy sand, 0 to 3 percent slopes	819
DeB	Deerfield loamy sand, 3 to 8 percent slopes	316
SuB	Sudbury fine sandy loam, 2 to 8 percent slopes	11344
Ra	Raynham silt loam, 0 to 3 percent slopes	1462
MoB	Montauk fine sandy loam, 3 to 8 percent slopes	17492
MoC	Montauk fine sandy loam, 8 to 15 percent slopes	7765
MeB	Montauk fine sandy loam, 3 to 8 percent slopes, extremely stony	25650
MeC	Montauk fine sandy loam, 8 to 15 percent slopes, extremely stony	17874
PaB	Paxton fine sandy loam, 3 to 8 percent slopes	7652
PaC	Paxton fine sandy loam, 8 to 15 percent slopes	7103
PaD	Paxton fine sandy loam, 15 to 25 percent slopes	996
PbB	Paxton fine sandy loam, 3 to 8 percent slopes, extremely stony	7181
PbC	Paxton fine sandy loam, 8 to 15 percent slopes, extremely stony	1705
PbD	Paxton fine sandy loam, 15 to 25 percent slopes, extremely stony	2902
WnA	Woodbridge fine sandy loam, 0 to 3 percent slopes	858
WnB	Woodbridge fine sandy loam, 3 to 8 percent slopes	29709
WnB	Woodbridge fine sandy loam, 3 to 8 percent slopes, extremely stony	33085
SeB	Scituate fine sandy loam, 3 to 8 percent slopes	5553
SfB	Scituate fine sandy loam, 3 to 8 percent slopes, extremely stony	5848
WnA	Walpole sandy loam, 0 to 5 percent slopes	4305
Rn	Rippowam silt loam, 0 to 3 percent slopes	2645
CaB	Canton fine sandy loam, 3 to 8 percent slopes	17492
CaC	Canton fine sandy loam, 8 to 15 percent slopes	8151
CaD	Canton fine sandy loam, 15 to 35 percent slopes	3229
CbB	Canton fine sandy loam, 3 to 8 percent slopes, extremely stony	35002
CbC	Canton fine sandy loam, 8 to 15 percent slopes, extremely stony	16410
CbD	Canton fine sandy loam, 15 to 25 percent slopes, extremely stony	8281
Sa	Saco silt loam, 0 to 3 percent slopes	9031
Sw	Swansboro muck, 0 to 1 percent slopes	17007
Fm	Freetown muck, 0 to 1 percent slopes	16573
Fp	Freetown muck, ponded, 0 to 1 percent slopes	7078
Rs	Rs, sand and gravel	2419
Ur	Urban land, 0 to 15 percent slopes	10431
WnA	Woodbridge-Urban land complex, 3 to 15 percent slopes	723
MmB	Merrimac-Urban land complex, 0 to 8 percent slopes	15690
Uf	Udorthents, refuse substratum	592
Ua	Udorthents, sandy	15477
Ud	Udorthents, loamy	17520
Ue	Udorthents, w et substratum	811
RdA	Ridgebury fine sandy loam, 0 to 5 percent slopes	492
RgB	Ridgebury fine sandy loam, 2 to 8 percent slopes, extremely stony	25733
WnA	Whitman fine sandy loam, 0 to 5 percent slopes, extremely stony	8424