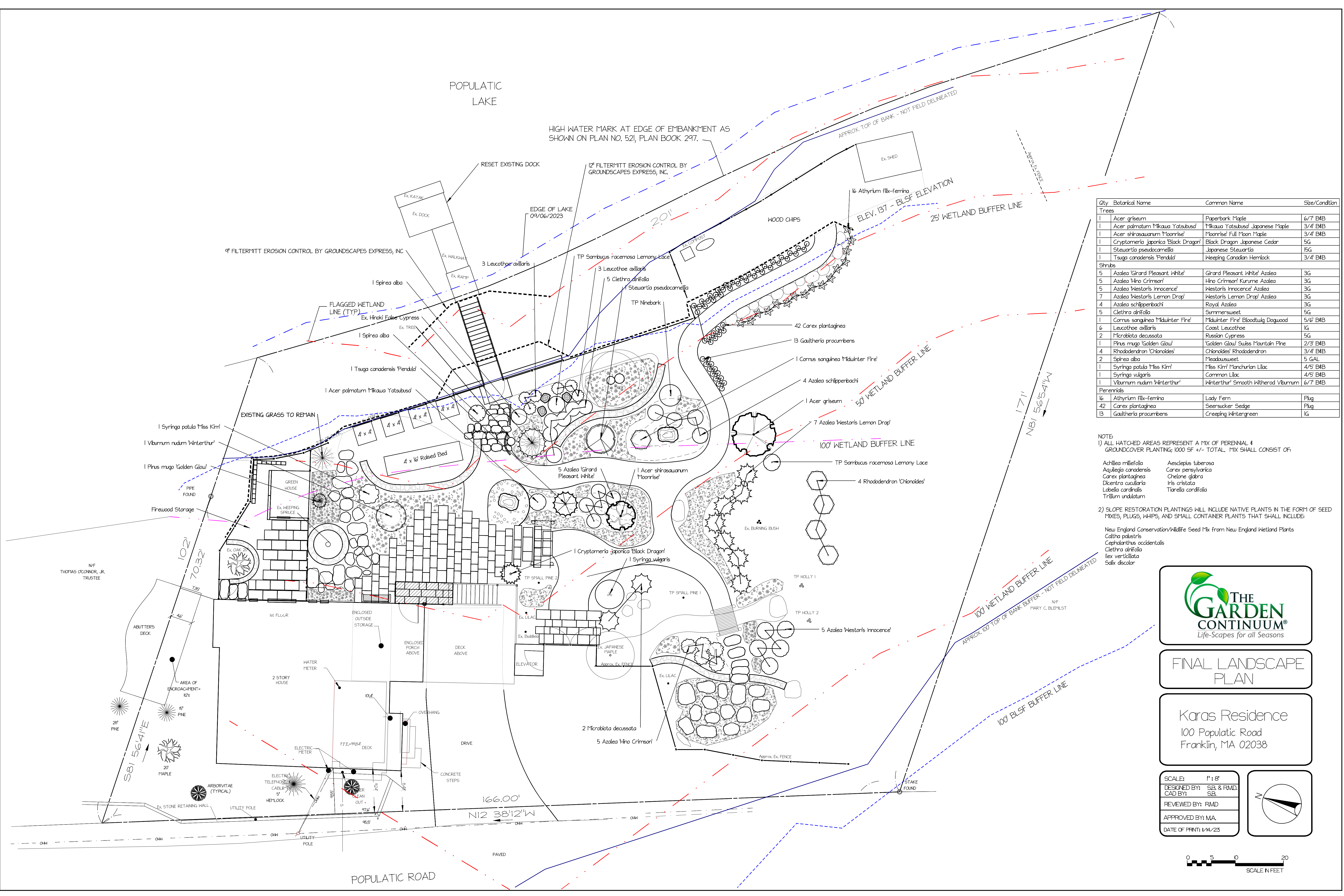


POPULATIC LAKE

HIGH WATER MARK AT EDGE OF EMBANKMENT AS SHOWN ON PLAN NO. 521, PLAN BOOK 297.



Qty	Botanical Name	Common Name	Size/Condition
Trees			
1	<i>Acer griseum</i>	Paperbark Maple	6/7 B&B
1	<i>Acer palmatum</i> 'Mikawa Yatsubus'	Mikawa Yatsubus' Japanese Maple	3/4 B&B
1	<i>Acer shirasawanum</i> 'Moonrise'	'Moonrise' Full Moon Maple	3/4 B&B
1	<i>Cryptomeria japonica</i> 'Black Dragon'	Black Dragon Japanese Cedar	5G
1	<i>Stewartia pseudocamellia</i>	Japanese Stewartia	15G
1	<i>Tsuga canadensis</i> 'Pendula'	Weeping Canadian Hemlock	3/4 B&B
Shrubs			
5	<i>Azalea</i> 'Grand Pleasant White'	'Grand Pleasant White' Azalea	3G
5	<i>Azalea</i> 'Hino Crimson'	'Hino Crimson' Kurume Azalea	3G
5	<i>Azalea</i> 'Weston's Innocence'	'Weston's Innocence' Azalea	3G
7	<i>Azalea</i> 'Weston's Lemon Drop'	'Weston's Lemon Drop' Azalea	3G
4	<i>Azalea schlippenbachii</i>	Royal Azalea	3G
5	<i>Clethra alnifolia</i>	Summersweet	5G
1	<i>Cornus sanguinea</i> 'Midwinter Fire'	'Midwinter Fire' Bloodtwig Dogwood	5/6' B&B
6	<i>Leucothoe axillaris</i>	Coast Leucothoe	1G
2	<i>Microbiota decussata</i>	Russian Cypress	5G
1	<i>Pinus mugo</i> 'Golden Glow'	'Golden Glow' Swiss Mountain Pine	2/3' B&B
4	<i>Rhododendron</i> 'Chionoides'	'Chionoides' Rhododendron	3/4' B&B
2	<i>Spiraea alba</i>	Meadowsweet	5 GAL
1	<i>Syringa patula</i> 'Miss Kim'	'Miss Kim' Manchurian Lilac	4/5' B&B
1	<i>Syringa vulgaris</i>	Common Lilac	4/5' B&B
1	<i>Viburnum nudum</i> 'Winterthur'	'Winterthur' Smooth Withered Viburnum	6/7' B&B
Perennials			
16	<i>Athyrium filix-femina</i>	Lady Fern	Plug
42	<i>Carex plantaginea</i>	Seersucker Sedge	Plug
13	<i>Gaultheria procumbens</i>	Creeping Wintergreen	1G

NOTE:
 1) ALL HATCHED AREAS REPRESENT A MIX OF PERENNIAL & GROUNDCOVER PLANTING; 1000 SF +/- TOTAL. MIX SHALL CONSIST OF:
Achillea millefolium, *Aesclepias tuberosa*,
Aquilegia canadensis, *Carex pensylvanica*,
Carex plantaginea, *Chelone glabra*,
Dicentra cucullaria, *Iris cristata*,
Labelia cardinalis, *Tiarella cordifolia*,
Trillium undulatum

2) SLOPE RESTORATION PLANTINGS WILL INCLUDE NATIVE PLANTS IN THE FORM OF SEED MIXES, PLUGS, WHIPS, AND SMALL CONTAINER PLANTS THAT SHALL INCLUDE:
New England Conservation/Wildlife Seed Mix from New England Wetland Plants
Caltha palustris,
Cephalanthus occidentalis,
Clethra alnifolia,
Ilex verticillata,
Salix discolor



FINAL LANDSCAPE PLAN

Karas Residence
 100 Populatic Road
 Franklin, MA 02038

SCALE: 1" = 8'
 DESIGNED BY: SB & RMD, SB
 CAD BY: SB
 REVIEWED BY: RMD
 APPROVED BY: MA
 DATE OF PRINT: 1/14/23

