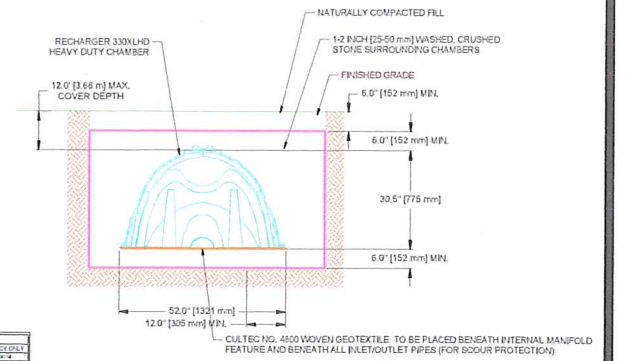
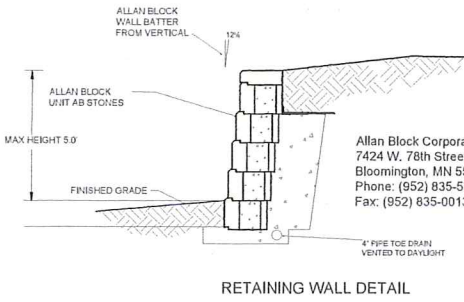
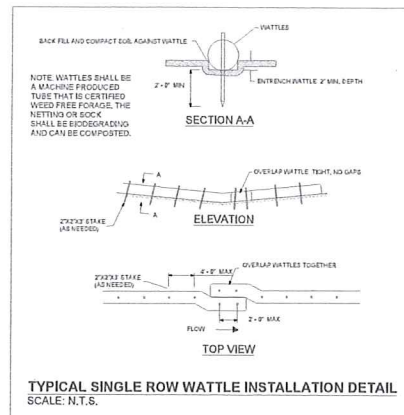
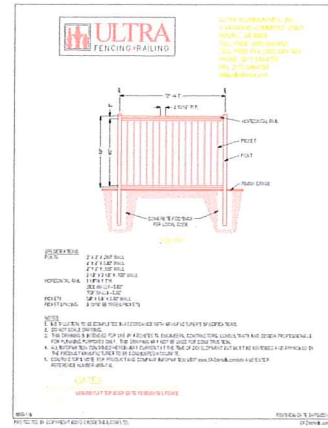
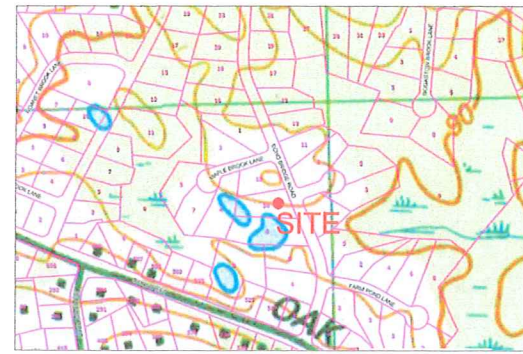


LOCUS NOT TO SCALE



**RECHARGE DETAIL**

\* CALCULATED FOR 3INCH STORM, CONFIRMED WITH FRANKLIN TOWN ENGINEER

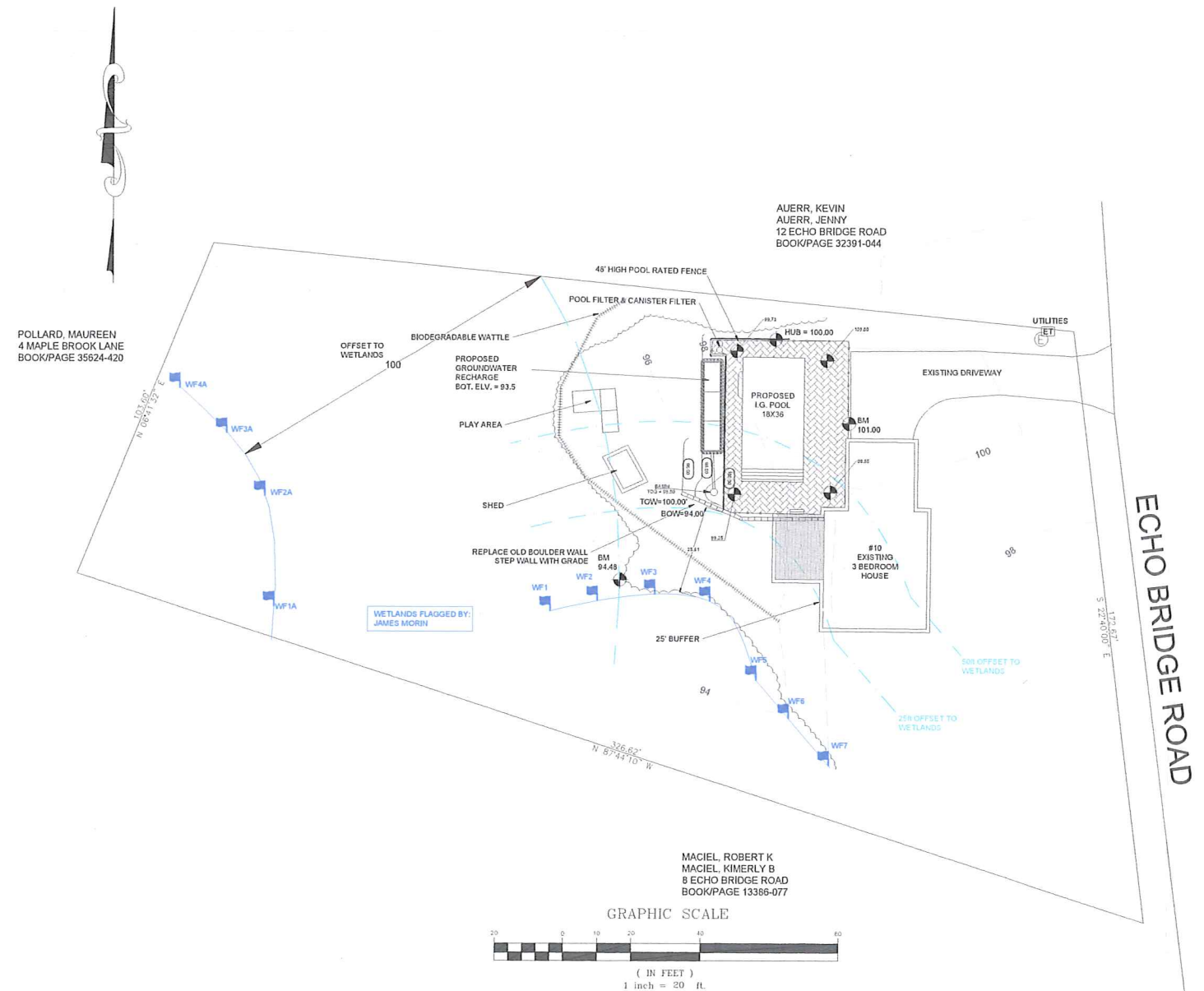
FROM	TO	QUANTITY	UNIT	DESCRIPTION
FROM A TO B	100.00	1	SECTION	SECTION A-A
FROM B TO C	100.00	1	SECTION	SECTION B-B
FROM C TO D	100.00	1	SECTION	SECTION C-C
FROM D TO E	100.00	1	SECTION	SECTION D-D

ITEM NO.	DESCRIPTION	QUANTITY	UNIT	PRICE	TOTAL
1	RECHARGER 330X140 HEAVY DUTY CHAMBER	1	EA	1500.00	1500.00
2	1-1/2 INCH WASHED CRUSHED STONE	100	CY	10.00	1000.00
3	6.0' MFL	100	LF	1.00	100.00
4	33.5' MFL	100	LF	1.00	100.00
5	6.0' MFL	100	LF	1.00	100.00
6	52.0' MFL	100	LF	1.00	100.00
7	12.0' MFL	100	LF	1.00	100.00
8	CULTEC NO. 4500 WOVEN GEOTEXTILE	100	LF	1.00	100.00

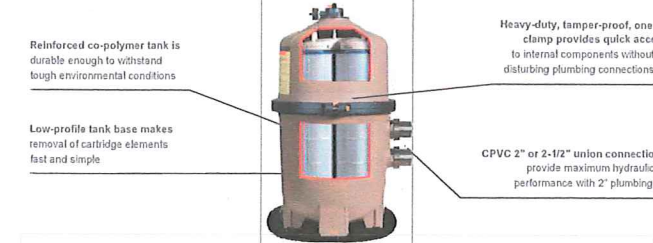
**CONSTRUCTION SEQUENCE**

- DURING THIS SEQUENCE ALL EROSION CONTROL BARRIERS SHALL BE INSPECTED AND MAINTAINED. ALL DISTURBED AREAS SHALL BE STABILIZED BY WOOD CHIPS, MULCH, SEEDING OR SOILING AS SOON AS POSSIBLE AFTER GRADING IS COMPLETE. ALL EROSION CONTROL BARRIERS SHALL BE REMOVED UPON COMPLETION OF FINAL SLOPE STABILIZATION.
- ALL ELEVATIONS REFER TO BM - 101.00 (SEE PLANS)
  - DEMARK LIMITS OF WORK; INSTALL EROSION CONTROL BARRIERS, CONTACT CONSERVATION COMMISSION FOR INSPECTION
  - CLEAR AND GRUB SITE; STRIP AND STOCKPILE LOAM WITHIN THE LIMIT OF WORK
  - EXCAVATE FOR POOL; INSTALL POOL WALLS AND CONCRETE COLLAR, PLUMBING AND ELECTRICAL GRADE AND BACKFILL AREA AROUND POOL FOR SURROUNDING PATIO; INSTALL LINER. STOCKPILES SHOULD BE OUTSIDE THE BUFFER ZONE TO THE BEST EXTENT PRACTICABLE
  - FINAL GRADING OF AREA
  - INSTALLATION OF POOL FENCING
  - COMPLETE FINAL LANDSCAPING AND LOAM AND SEED ALL AREAS DISTURBED BY CONSTRUCTION ACTIVITIES
  - CONTACT DESIGN ENGINEER TO CONDUCT AS-BUILT SITE INSPECTION
  - FOLLOWING COMPLETION OF CONSTRUCTION, AFTER VEGETATION HAS BEEN ESTABLISHED, SUBMIT MATERIALS REQUIRED FOR CERTIFICATE OF COMPLIANCE REQUEST TO CONSERVATION COMMISSION



**MAXIMUM FLOW WITH MINIMAL MAINTENANCE.**

Featuring an assembly of reusable polyester cartridge elements with precision-engineered cores. SwimClear multi-element cartridge filters provide heavy-duty dirt-holding capacity and extra-long filter cycles. In fact, as the industry's largest filter, the C7030 model offers the longest time possible between cleanings. SwimClear filters' top manifold configuration boasts industry-leading hydraulic performance, facilitating maximum flow through all cartridge elements for superior water clarity and increased energy savings.



**SPECIFICATIONS**

Filter Type	Cartridge elements: 225, 325, 425, and 525 R2 (4 cartridge elements), 700 R2 (8 cartridge elements)
Filter Tank	High-strength, injection-molded durable glass reinforced copolymer
Filter Element	Reinforced polyester
Performance Range	84 to 150 GPM, 318 to 568 LPM
Dimensions	C2030 - 24" W x 22 1/2" H (68 cm x 81 cm) C3030 - 24" W x 24 1/2" H (68 cm x 87 cm) C4030 - 24" W x 40 1/2" H (68 cm x 102 cm) C5030 - 24" W x 45 1/2" H (68 cm x 117 cm) C7030 - 24" W x 52 1/2" H (68 cm x 134 cm)

**FILTER PERFORMANCE DATA**

MODEL NUMBER	EFFECTIVE FILTRATION AREA	DESIGN FLOW RATE*	TURNOVER	
			8 HOURS	10 HOURS
C2030	225 sq ft / 20.9 m <sup>2</sup>	84 GPM / 318 LPM	40,339 gal / 153 m <sup>3</sup>	50,400 gal / 191 m <sup>3</sup>
C3030	325 sq ft / 30.2 m <sup>2</sup>	122 GPM / 462 LPM	58,569 gal / 222 m <sup>3</sup>	73,209 gal / 277 m <sup>3</sup>
C4030	425 sq ft / 39.5 m <sup>2</sup>	150 GPM / 568 LPM	72,000 gal / 273 m <sup>3</sup>	90,000 gal / 341 m <sup>3</sup>
C5030	525 sq ft / 48.8 m <sup>2</sup>	150 GPM / 568 LPM	72,000 gal / 273 m <sup>3</sup>	90,000 gal / 341 m <sup>3</sup>
C7030	700 sq ft / 65.0 m <sup>2</sup>	150 GPM / 568 LPM	72,000 gal / 273 m <sup>3</sup>	90,000 gal / 341 m <sup>3</sup>

\*Based on NSF recommended rate for commercial use at .375 GPM/ft<sup>2</sup>  
\*\*Determined by pump size and piping system hydraulic; 2" piping is recommended for flow rates equal to or greater than 90 GPM (341 LPM). Hayward doesn't recommend flow rates above 150 GPM.

hayward.com • 1-888-HAYWARD

Pumps • Filters • Heating • Cleaners • Sanitization • Automation • Lighting • Water Features • White Goods

**NOTICE OF INTENT PLAN (PROPOSED POOL)**

CLIENT: CHRISTINE M. ALLEN  
19 ECHO BRIDGE ROAD  
FRANKLIN, MA 02038

PHONE #: \_\_\_\_\_  
CELL: \_\_\_\_\_  
WORK: \_\_\_\_\_  
EMAIL: \_\_\_\_\_

LOCATION: 19 ECHO BRIDGE ROAD  
FRANKLIN, MA 02038

ASSESSOR MAP # 252  
ASSESSOR LOT # 75

DATE: 05/12/2023

SCALE: 1" = 20'

DESIGNED BY: JJM

DRAWING NO.: 10 ECHO BRIDGE

FIELD BOOK: 14

DRAWN BY: JJM

#	DATE	REVISION DESCRIPTION	DRAWN	CHECK
1	7/25/23	REVISIONS PER CON COM COMMENTS	JJM	JJM

**NorthEast Classic Engineering**

58 OAK TRAIL  
BOLTON, MA 01740  
774-698-2246

NECLASSICENGINEERING.COM  
JIM@NECLASSICENGINEERING.COM

JAMES HERRICK, MA PE 41185