

TRI-COUNTY REGIONAL VOCATIONAL TECHNICAL HIGH SCHOOL



samiotes
Samiotes Consultants Inc.
Civil Engineers + Land Surveyors
20 A Street
Framingham, MA 01701
T 508.877.6688
F 508.877.8349
www.samiotes.com

ABBREVIATED NOTICE OF RESOURCE AREA DELINEATION

147 POND ST, FRANKLIN, MA
02038

DRAWING LIST

DRAWING TITLE	DRAWING NUMBER
COVER SHEET	T-1
TOPOGRAPHIC PLAN OF LAND	T-2
TOPOGRAPHIC PLAN OF LAND	T-3
TOPOGRAPHIC PLAN OF LAND	T-4
TOPOGRAPHIC PLAN OF LAND	T-5
TOPOGRAPHIC PLAN OF LAND	T-6

CIVIL ENGINEER/
LANDSURVEYOR:



Samiotes Consultants Inc.
Civil Engineers + Land Surveyors
20 A STREET FRAMINGHAM, MA 01701
T 508.877.6688
F 508.877.8349
WWW.SAMIOTES.COM

ARCHITECT:



DRA
260 CHARLES ST
WALTHAM, MA 02451
617.954.1700
WWW.DRAWS.COM

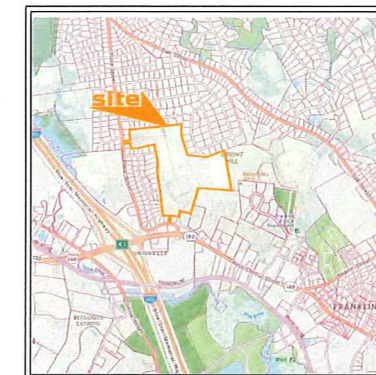
WETLAND
SCIENTIST:



ECR
28 UNION ST
PLYMOUTH, MA 02360
617.529.3792
WWW.ECRWETLANDS.COM

APPLICANT & OWNER:
KAREN MAGUIRE-SCHOOL SUPERINTENDENT
TRI-COUNTY REGIONAL VOCATIONAL TECHNICAL
HIGH SCHOOL
FRANKLIN, MA 02038

AUGUST, 2023



LOCUS MAP SCALE: NOT TO SCALE

TRI-COUNTY REGIONAL VOCATIONAL
TECHNICAL HIGH SCHOOL
147 POND STREET FRANKLIN, MA

REVISION

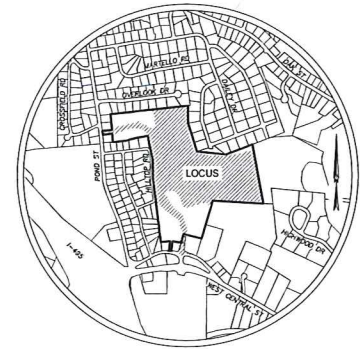
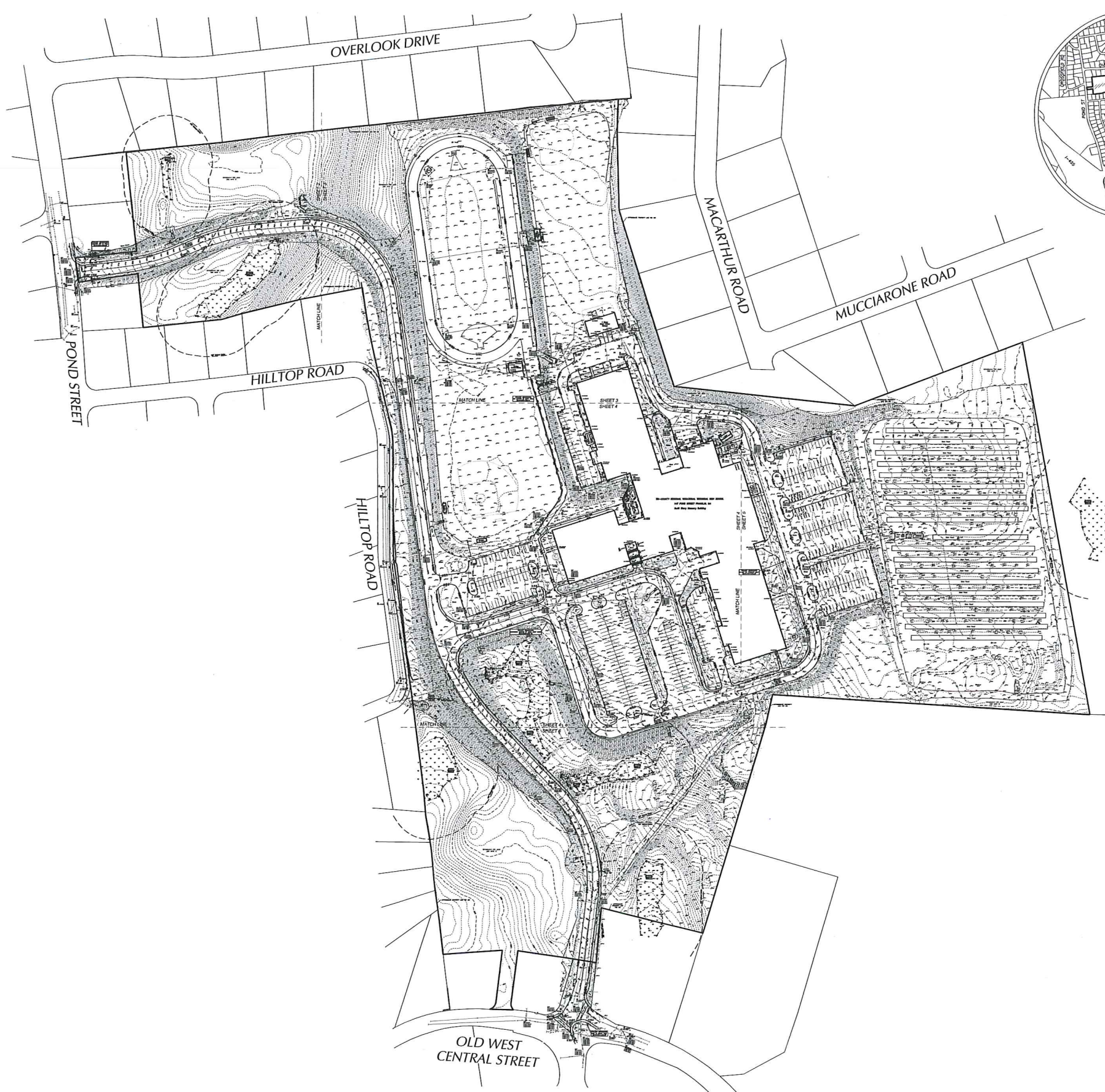
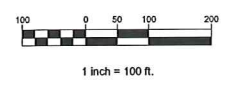
ABBREVIATED
NOTICE OF
RESOURCE AREA
DELINEATION
SUBMISSION

JOB # 23033-00
DATE: 8/3/2023
SCALE: NTS
DRAWN BY: AJI
APPROVED BY: SP

MASSACHUSETTS STATE PLANE
COORDINATE SYSTEM (NAD83)



- LEGEND**
- CATCHBASIN
 - DRAIN MANHOLE
 - AREA DRAIN
 - SEWER MANHOLE
 - CLEAN OUT
 - VENT
 - HYDRANT
 - WATER GATE
 - WATER SERVICE
 - UNKNOWN MANHOLE
 - POST INDICATOR VALVE
 - GAS METER
 - GAS GATE
 - ELECTRIC METER
 - ELECTRIC BOX
 - UTILITY POLE
 - TRANSFORMER
 - GUY WIRE
 - LIGHT POLE
 - HANDHOLE
 - SIGN
 - POST
 - BOLLARD
 - BORING
 - TEST PIT
 - WETLAND FLAG
 - DECIDUOUS TREE
 - CONIFEROUS TREE
 - SHRUB
 - STUMP
 - FLAGPOLE
 - HANDICAP PARKING SPACE
 - FLARED END SECTION
 - DRAIN LINE
 - SEWER LINE
 - WATER LINE
 - GAS LINE
 - ELECTRIC LINE
 - COMMUNICATIONS LINE
 - OVERHEAD WIRE
 - INDEX CONTOUR
 - INTERMEDIATE CONTOUR
 - GROUND SURVEY LIMITS
 - DOOR SILL ELEVATION
 - FINISHED FLOOR ELEVATION
 - RECORD
 - BITUMINOUS
 - EC EDGE OF CONCRETE
 - EG EDGE OF GRAVEL
 - ES EDGE OF STONE
 - VCC VERTICAL CONCRETE CURB
 - VOC VERTICAL GRANITE CURB
 - SAC SLOPED ASPHALT CURB
 - OH OVERHANG
 - HR HAND RAIL
 - VC VITRIFIED CLAY
 - DI DROP INLET
 - NVP NO VISIBLE PIPE
 - UTO UNABLE TO OPEN
 - CMP CORRUGATED METAL PIPE
 - RCP REINFORCED CONCRETE PIPE
 - PVC POLYVINYL CHLORIDE
 - TP TOP OF PIPE
 - CLF CHAIN LINK FENCE
 - MGR METAL GUARD RAIL
 - MBW MASONRY BLOCK WALL
 - RTW RAILROAD TIE WALL
 - SWL SOLID WHITE LINE
 - SYL SOLID YELLOW LINE
 - LA LANDSCAPED AREA



samioles
Samioles Consultants Inc.
Civil Engineers • Land Surveyors
20 A Street
Franklin, MA 01701
T 508.877.8888
F 508.877.8349
www.samioles.com

- NOTES:**
1. THIS PLAN IS REFERRED HORIZONTALLY TO THE MASSACHUSETTS STATE PLANE COORDINATE SYSTEM NORTH AMERICAN DATUM OF 1983 AND VERTICALLY TO THE NORTH AMERICAN VERTICAL DATUM OF 1988 BY RTK GPS SURVEYS TAKEN ON DECEMBER 8, 2022. SEE PLAN FOR PROJECT BENCHMARK LOCATION.
 2. THIS PLAN IS THE RESULT OF AN INSTRUMENT SURVEY PERFORMED IN NOVEMBER, DECEMBER OF 2022, JANUARY & APRIL OF 2023.
 3. UNDERGROUND UTILITIES ARE BASED UPON AN ACTUAL FIELD SURVEY AND INFORMATION OF RECORD. IT IS NOT WARRANTED THAT THEY ARE EXACTLY LOCATED, NOR THAT ALL UNDERGROUND CONDUITS OR OTHER STRUCTURES ARE SHOWN ON THIS PLAN. CONTACT DIGSAFE 811 PRIOR TO ANY EXCAVATION.
 4. THE SUBJECT LAND AS SHOWN IS NOT LOCATED WITHIN A SPECIAL FLOOD HAZARD AREA, OR OTHER FLOOD AREA AS SHOWN ON FEMA NATIONAL FLOOD INSURANCE PROGRAM (NFIP) FLOOD INSURANCE RATE MAP (FIRM) NUMBER 250203030E, HAVING AN EFFECTIVE DATE OF JULY 17, 2022.
 5. THIS PLAN IS NOT INTENDED TO REPRESENT A BOUNDARY SURVEY. PROPERTY LINES SHOWN ARE APPROXIMATE ONLY. EASEMENTS, IF ANY, ARE NOT SHOWN.
 6. APPROXIMATE LOCATION OF RECORD TEST PITS AND BORING SHOWN PER PLAN ENTITLED "SUBSURFACE EXPLORATION PLAN" BY PAUL B. ALENGER AND ASSOCIATES, INC. DATED JULY 2013 & PLAN ENTITLED "SITE PLAN" BY O'REILLY, TALBOT & O'NEIL, DATED NOVEMBER 7, 2022.
 7. TOPOGRAPHY OUTSIDE THE GROUND SURVEY LIMITS (GSL) HAS BEEN GENERATED FROM LIDAR DATA COMPILED FROM INFORMATION AT CONSTADMA.COM. OTHER SITE FEATURES MAY EXIST. ANY USER SHOULD DETERMINE THE SUITABILITY FOR ITS INTENDED USE AND ASSUME ALL RISK AND LIABILITY IN CONNECTION THEREWITH.
 8. THE LIMIT OF BORDERING VEGETATED WETLANDS WERE FIELD DELINEATED BY ENVIRONMENTAL CONSULTING & RESTORATION, LLC ON MARCH 23, 2023.

**TRI-COUNTY REGIONAL VOCATIONAL
TECHNICAL HIGH SCHOOL**
147 POND STREET FRANKLIN, MA



D.F.F.
DANIEL F. FLAVIN - P.E. No. 9347
REGISTERED PROFESSIONAL
LAND SURVEYOR FOR
SAMIOLES CONSULTANTS, INC.

REVISION

**TOPOGRAPHIC
PLAN OF LAND**

JOB # 22033.00
DATE: 5/19/2023
SCALE: 1"=100'
DRAWN BY: A.J.D.
APPROVED BY: D.F.F.

T-1

SHEET 1 OF 6

FILE: S2033 TRI COUNTY SCHOOL FRANKLIN TOPO.DWG

MASSACHUSETTS STATE PLANE
COORDINATE SYSTEM (NAD83)



Samioles Consultants Inc.
Civil Engineers - Land Surveyors
22 Stone
Framingham, MA 01701
T 508.877.6665
F 508.877.8349
www.samioles.com

TRI-COUNTY REGIONAL VOCATIONAL
TECHNICAL HIGH SCHOOL

147 POND STREET FRANKLIN, MA



DF
DANIEL F. FLEMING - P.L.S. No. 28475
REGISTERED PROFESSIONAL
LAND SURVEYOR FOR
SAMIOTES CONSULTANTS, P.C.

REVISION

NO.	DATE	DESCRIPTION

TOPOGRAPHIC
PLAN OF LAND

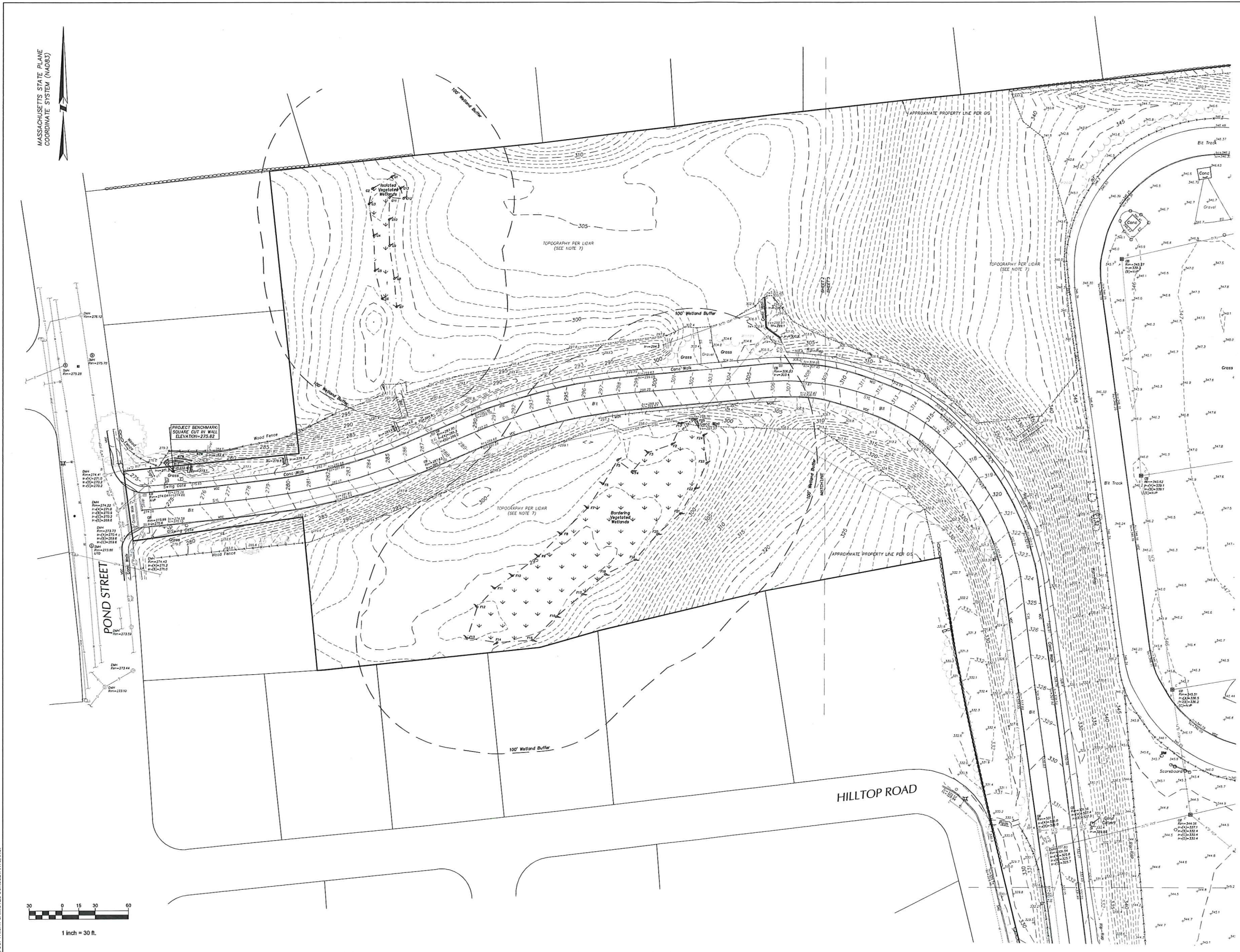
JOB # 52033.00
DATE 5/3/2023
SCALE: 1"=30'
DRAWN BY: AJD
APPROVED BY: DFF

T-2

SHEET 2 OF 4

FILE: 52033 TRI COUNTY SCHOOL, FRANKLIN TOPO.DWG

© COPYRIGHT SAMIOTES CONSULTANTS, INC.



MASSACHUSETTS STATE PLANE
COORDINATE SYSTEM (MADS3)



Samioles Consultants Inc.
Civil Engineers - Land Surveyors
224 State
Franklin, MA 01701
T: 508.877.6683
F: 508.877.8349
www.samioles.com

TRI-COUNTY REGIONAL VOCATIONAL
TECHNICAL HIGH SCHOOL
147 POND STREET FRANKLIN, MA



D.F.
DANIEL F. FLEMING - P.L.S. No. 3116
REGISTERED PROFESSIONAL
LAND SURVEYOR FOR
MASSACHUSETTS, P.E.

REVISION

NO.	DESCRIPTION

TOPOGRAPHIC
PLAN OF LAND

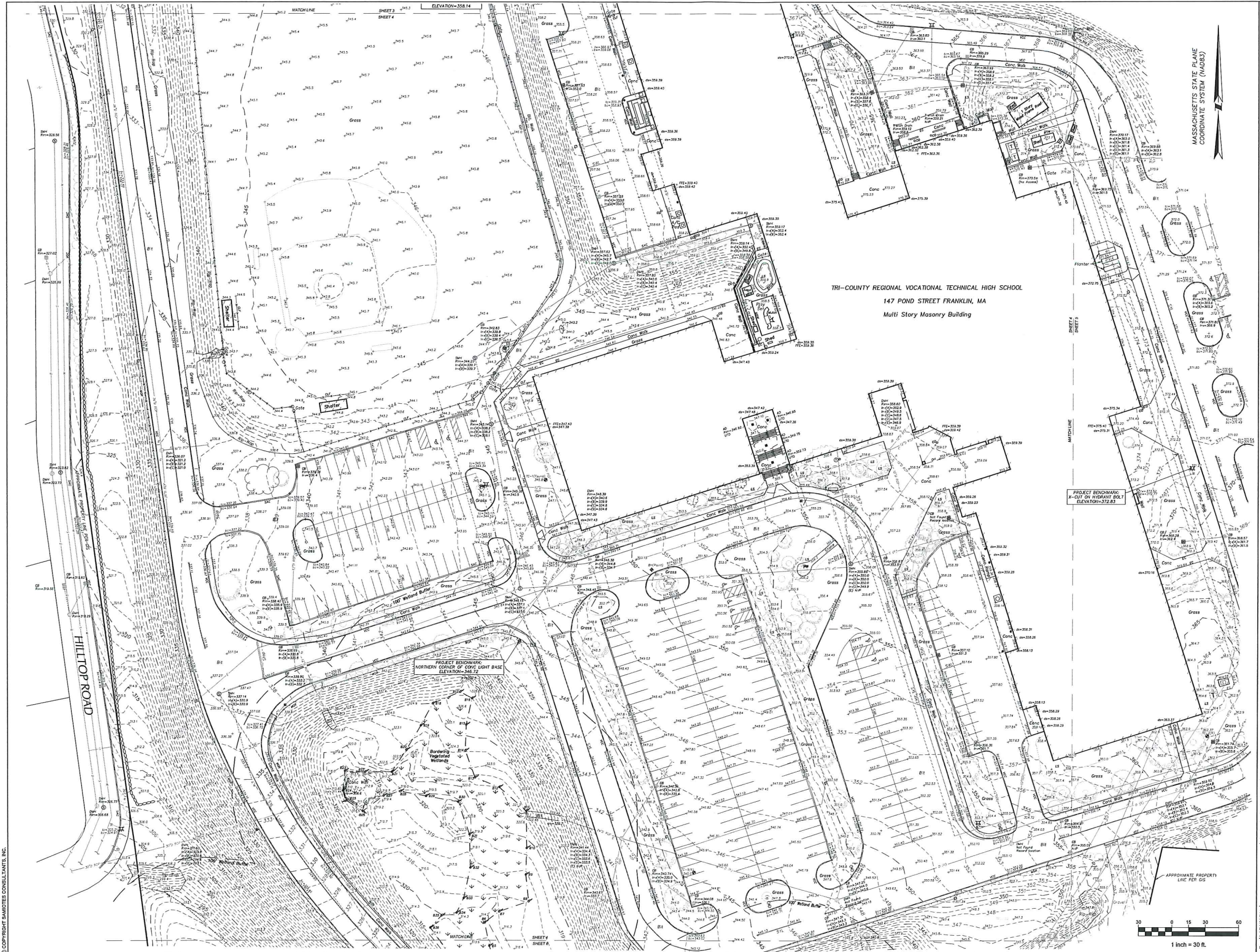
JOB # 52031.00
DATE 5/3/2023
SCALE 1"=30'
DRAWN BY AJD
APPROVED BY DJF

T-3

SHEET 3 OF 4

FILE: 52031 TH COUNTY SCHOOL, FRANKLIN TOPO.DWG

© COPYRIGHT SAMIOLES CONSULTANTS, INC.



samioles
 Samioles Consultants Inc.
 Civil Engineers - Land Surveyors
 23 A Street
 Framingham, MA 01701
 T: 508.877.6633
 F: 508.877.8949
 www.samioles.com

MASSACHUSETTS STATE PLANE
 COORDINATE SYSTEM (NAD83)

**TRI-COUNTY REGIONAL VOCATIONAL
 TECHNICAL HIGH SCHOOL**
 147 POND STREET FRANKLIN, MA

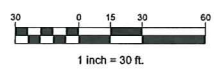


D.F.
 DANIEL F. FLEMING - P.E. No. 15476
 REGISTERED PROFESSIONAL
 LAND SURVEYOR FOR
 SAMIOLES CONSULTANTS, INC.

REVISION	DATE	BY	APP'D

**TOPOGRAPHIC
 PLAN OF LAND**

DATE: 5/3/2023
 SCALE: 1"=30'
 DRAWN BY: JAD
 APPROVED BY: DFF
 SHEET 4 OF 4

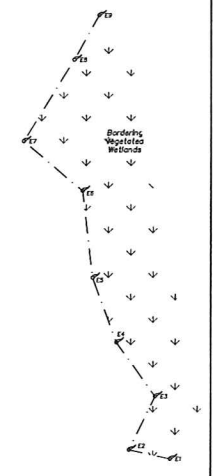
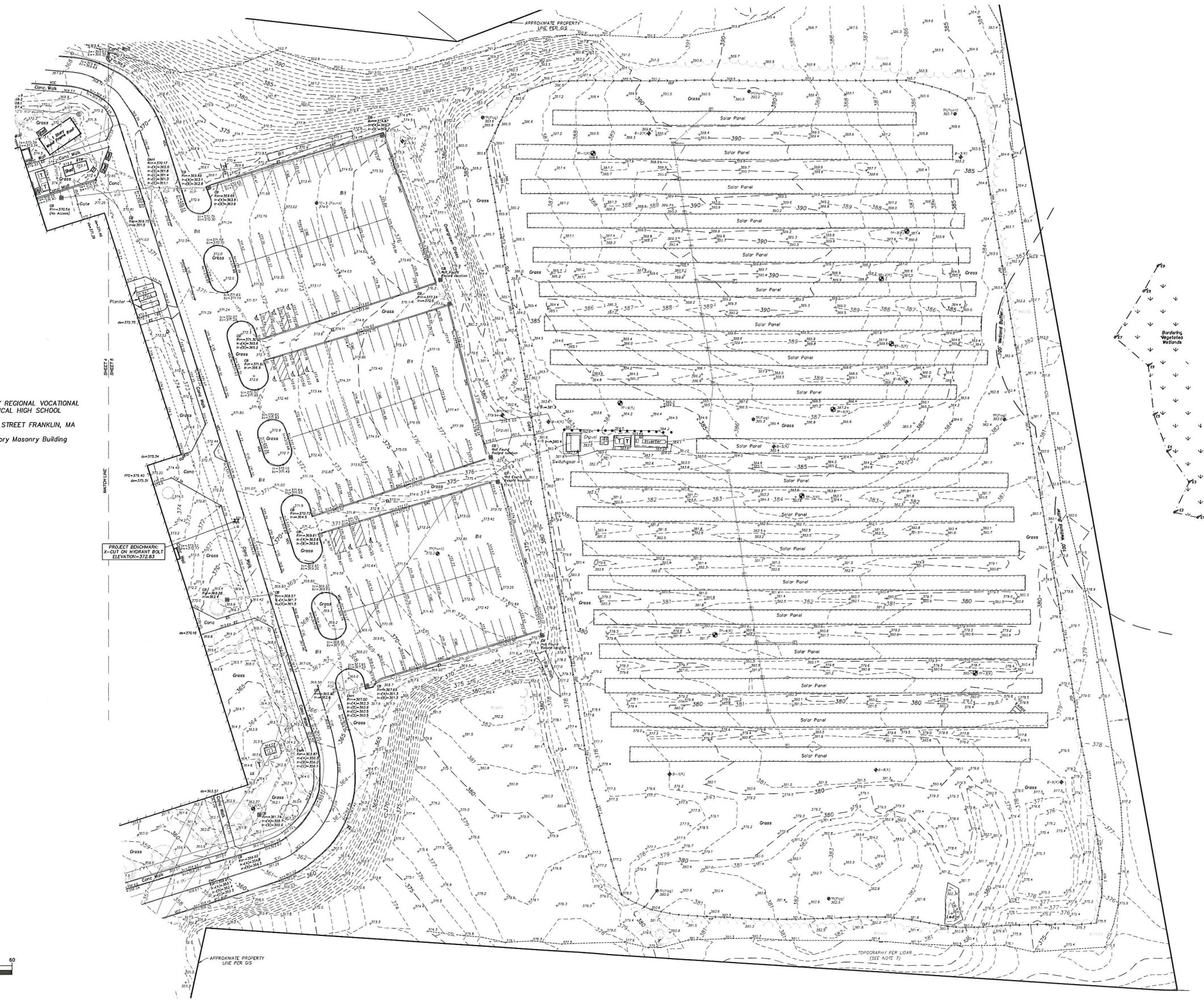
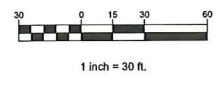


© COPYRIGHT SAMIOLES CONSULTANTS, INC.

FILE: 52333 TRC COUNTY SCHOOL FRANKLIN TOPOG.DWG

MASSACHUSETTS STATE PLANE
COORDINATE SYSTEM (MAD83)

TRI-COUNTY REGIONAL VOCATIONAL
TECHNICAL HIGH SCHOOL
147 POND STREET FRANKLIN, MA
Multi Story Masonry Building



samiotes
Samiotes Consultants Inc.
Civil Engineers - Land Surveyors
25 A Street
Franklin, MA 01701
T 508.877.4688
F 508.877.8440
www.samiotes.com

TRI-COUNTY REGIONAL VOCATIONAL
TECHNICAL HIGH SCHOOL
147 POND STREET FRANKLIN, MA



DF
DANIEL FLEMING - P.L.S. NO. 55476
REGISTERED PROFESSIONAL
LAND SURVEYOR FOR
SAMIOTES CONSULTANTS, INC.

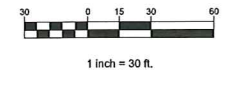
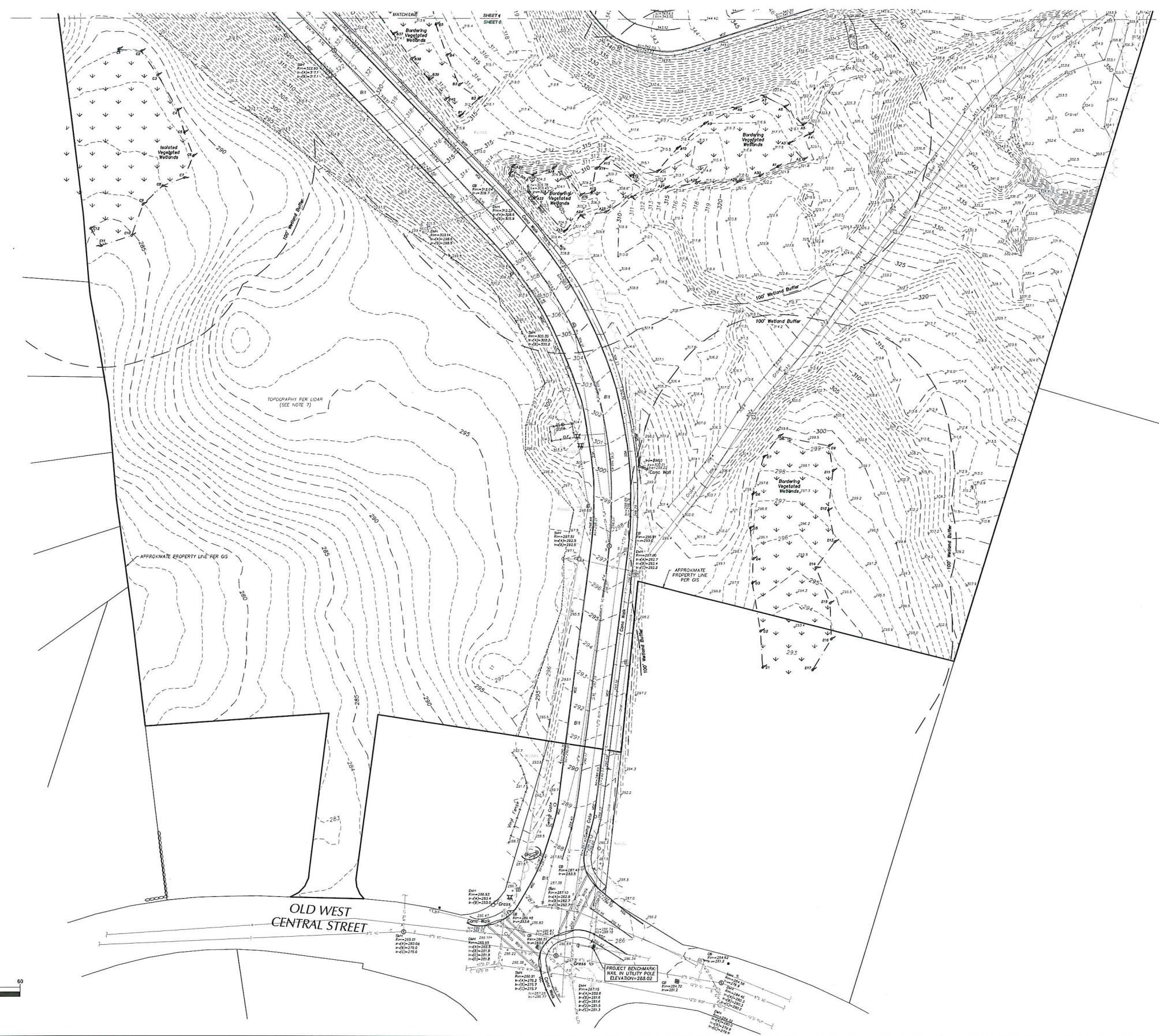
REVISION	DATE	BY

TOPOGRAPHIC
PLAN OF LAND

JOB # 52033.00
DATE: 5/3/2023
SCALE: 1"=30'
DRAWN BY: AD
APPROVED BY: EFF
T-5
SHEET 5 OF 6
FILE: 52033 TRN COUNTY SCHOOL, FRANKLIN TOPO.GR

© COPYRIGHT SAMIOTES CONSULTANTS, INC.

MASSACHUSETTS STATE PLANE
COORDINATE SYSTEM (MAD83)



Samiotes Consultants Inc.
Civil Engineers - Land Surveyors
25 A Street
Franklin, MA 01701
T 508.877.6888
F 508.877.3441
www.samiotes.com

TRI-COUNTY REGIONAL VOCATIONAL
TECHNICAL HIGH SCHOOL
147 POND STREET FRANKLIN, MA



D.F.
DANIEL F. FLEMING - P.L.S. No. 15476
REGISTERED PROFESSIONAL
LAND SURVEYOR FOR
SAMIOTES CONSULTANTS, INC.

REVISION

NO.	DATE	DESCRIPTION

TOPOGRAPHIC
PLAN OF LAND

JOB # 52033.00
DATE: 5/3/2022
SCALE: 1"=30'
DRAWN BY: ALB
APPROVED BY: LDF
T-6
SHEET 6 OF 6
FILE: 52033 TRN COUNTY SCHOOL, FRANKLIN TOPO.DWG

© COPYRIGHT SAMIOTES CONSULTANTS, INC.