

1518 Washington Street Stoughton, MA 02072

Phone: 781-640-0377

[www.WalnutTreeService.com](http://www.WalnutTreeService.com)



**September 15 ,2023**

To whom this may concern

I, Michael Gomes, have visited the property 69 Charles River Dr, Franklin MA 02038.

There are 3 trees that are posing a hazardous threat to the property. The trees that are in concern are the Pine tree at the back right of the house which has a hollowed base. An Ash tree at the back of the property is about 90% dead and indeed we can leave the trunk about 12 ft high for the woodpeckers. And lastly a leaning Red Maple that is leaning towards the house and could fall with any strong storm we may get. It was brought to the homeowner's attention that those trees are possibly located inside a conservation area owned property.

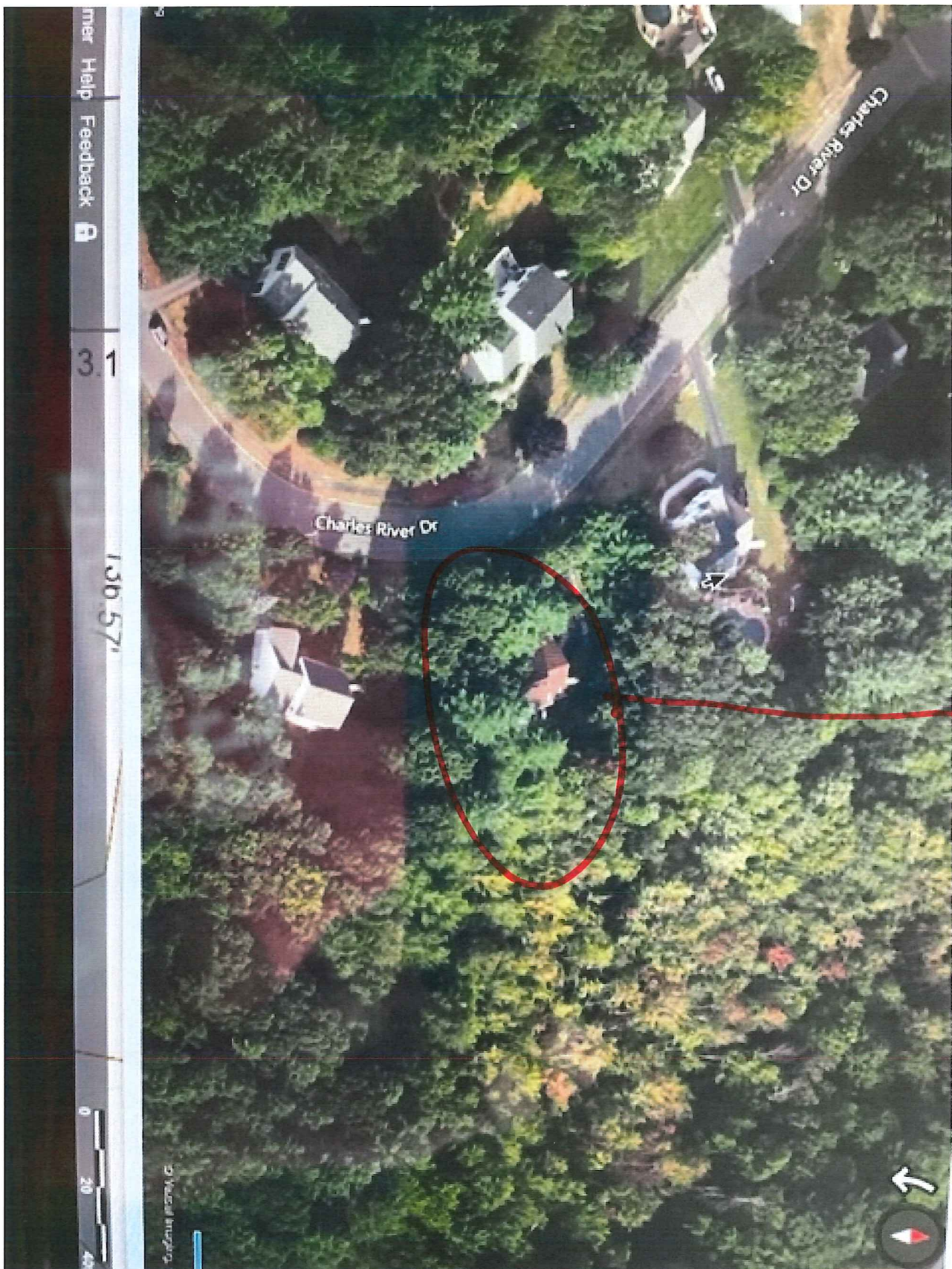
With my expertise with tree services, I've seen numerous cases of trees like this that ended up falling and causing a lot of damage which is why we highly recommend these trees to be removed. If permission is granted, we will follow any requests/rules accordingly.

Any questions or concerns please contact me at 857-210-3812

Thank you



69 CHARLES RIVER DR



mer Help Feedback

3.1

150.57'

Tree Number	1	2	3	4	5	6
Description	Pine	Oak	Pine	Ash	Maple	Oak Limb
Height	65 Ft	50 Ft	70 Ft	50 Ft	55Ft	25 Ft Long
Circumference	108 In	74 In	93 In	47 In	48 In	Est. 12 In
Dist to House	29 Ft	28.5 Ft	24.5 Ft	30 Ft	38 Ft	10 Ft
Degree of Slant	90	70	90	90	60	25
Notes	Rotten Limb & Core	Over Hang	Rotten Base & Forked Trunk	Dead	Over Hang	Approaching House