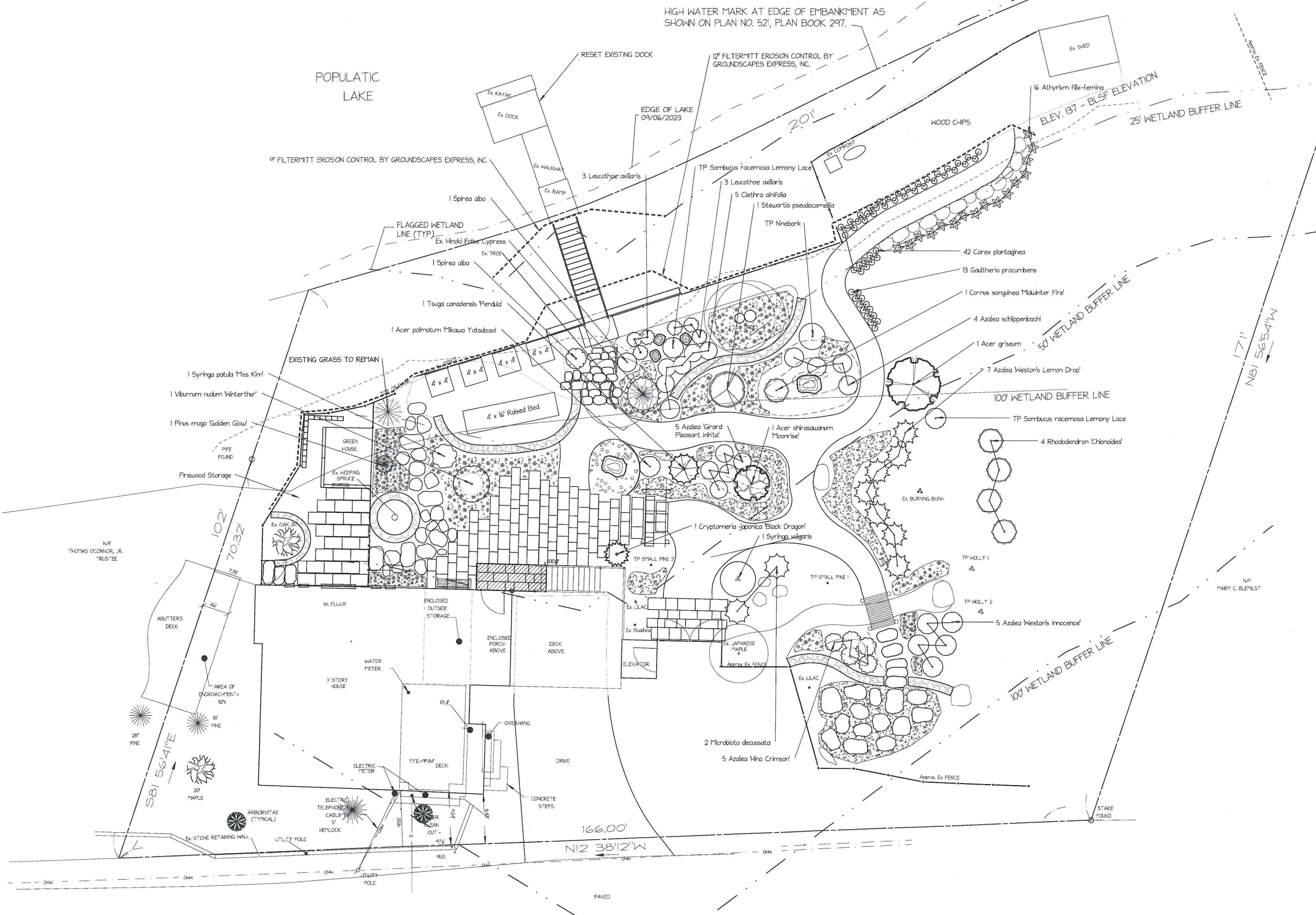


POPULATIC LAKE

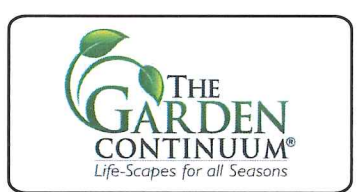
HIGH WATER MARK AT EDGE OF EMBANKMENT AS SHOWN ON PLAN NO. 521, PLAN BOOK 297.



Qty	Botanical Name	Common Name	Size/Condition
Trees			
1	<i>Acer griseum</i>	Paperbark Maple	6/7 B&B
1	<i>Acer palmatum 'Mikawa Yatsubusi'</i>	'Mikawa Yatsubusi' Japanese Maple	3/4' B&B
1	<i>Acer shirasawanum 'Moonrise'</i>	'Moonrise' Full Moon Maple	3/4' B&B
1	<i>Cryptomeria japonica 'Black Dragon'</i>	Black Dragon Japanese Cedar	5G
1	<i>Stewartia pseudocamellia</i>	Japanese Stewartia	15G
1	<i>Tsuga canadensis 'Pendula'</i>	Weeping Canadian Hemlock	3/4' B&B
Shrubs			
5	<i>Azalea 'Girard Pleasant White'</i>	'Girard Pleasant White' Azalea	3G
5	<i>Azalea 'Hino Crimson'</i>	'Hino Crimson' Kurume Azalea	3G
5	<i>Azalea 'Weston's Innocence'</i>	'Weston's Innocence' Azalea	3G
7	<i>Azalea 'Weston's Lemon Drop'</i>	'Weston's Lemon Drop' Azalea	3G
4	<i>Azalea schlipperbachii</i>	Royal Azalea	3G
5	<i>Clethra alnifolia</i>	Summersweet	5G
1	<i>Cornus sanguinea 'Midwinter Fire'</i>	'Midwinter Fire' Bloodtwig Dogwood	5/6' B&B
2	<i>Leucothoe axillaris</i>	Coast Leucothoe	1G
6	<i>Microbiota decussata</i>	Russian Cypress	5G
1	<i>Pinus mugo 'Golden Glow'</i>	'Golden Glow' Swiss Mountain Pine	2/3' B&B
4	<i>Rhododendron 'Chionoides'</i>	'Chionoides' Rhododendron	3/4' B&B
2	<i>Spiraea alba</i>	Meadowsweet	5 GAL
1	<i>Syringa patula 'Miss Kim'</i>	'Miss Kim' Manchurian Lilac	4/5' B&B
1	<i>Syringa vulgaris</i>	Common Lilac	4/5' B&B
1	<i>Viburnum nudum 'Winterthur'</i>	'Winterthur' Smooth Withered Viburnum	6/7' B&B
Perennials			
16	<i>Athyrium filix-femina</i>	Lady Fern	Plug
42	<i>Carex plantaginea</i>	Seersucker Sedge	Plug
3	<i>Gaultheria procumbens</i>	Creeping Wintergreen	1G

NOTE:
 1) ALL HATCHED AREAS REPRESENT A MIX OF PERENNIAL & GROUNDCOVER PLANTING; 1000 SF +/- TOTAL. MIX SHALL CONSIST OF:
Achillea millefolium, *Aesclepias tuberosa*, *Aquilegia canadensis*, *Carex pensylvanica*, *Carex plantaginea*, *Chelone glabra*, *Dicentra cucullaria*, *Iris cristata*, *Labelia cardinalis*, *Torella cordifolia*, *Trillium undulatum*

2) SLOPE RESTORATION PLANTINGS WILL INCLUDE NATIVE PLANTS IN THE FORM OF SEED MIXES, PLUGS, WHIPS, AND SMALL CONTAINER PLANTS THAT SHALL INCLUDE:
 New England Conservation/Wildlife Seed Mix from New England Wetland Plants
Callitha palustris, *Cephalanthus occidentalis*, *Clethra alnifolia*, *Ilex verticillata*, *Salix discolor*



FINAL LANDSCAPE PLAN

Karas Residence
 100 Populatic Road
 Franklin, MA 02038

SCALE: 1" = 8'
 DESIGNED BY: SB & RMD, SB
 CAD BY: SB
 REVIEWED BY: RMD
 APPROVED BY: MA
 DATE OF PRINT: 0/25/23

