

TOWN OF FRANKLIN, MA GROVE STREET IMPROVEMENTS PHASE 2

FEBRUARY 2023

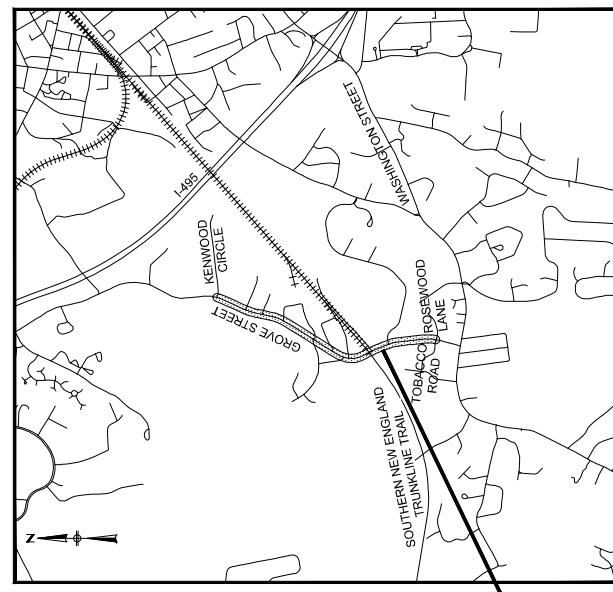


TOWN ADMINISTRATOR

JAMIE HELLEN

DEPARTMENT OF PUBLIC WORKS

ROBERT A. CANTOREGGI, DIRECTOR
MIKE MAGLIO, TOWN ENGINEER



Project Location

PROJECT LOCATION
LOCATION MAP
NOT TO SCALE

PREPARED BY:



ISSUE DATE: AUGUST 26, 2022

PLAN INDEX

SHEET NO.	DESCRIPTION
1	TITLE SHEET
2	LEGEND & ABBREVIATIONS
3	GENERAL NOTES & TYPICAL SECTIONS
4-13	CONSTRUCTION PLANS & PROFILES
14-18	DRAINAGE AND UTILITY PLANS
19-28	RESOURCE AREA PLANS
29	WETLAND REPLICATION PLANS
30	DEWATERING PLANS
31-34	CONSTRUCTION DETAILS

PERMITTING SUBMISSION



REGISTERED PROFESSIONAL
DATE

GENERAL SYMBOLS		PAVEMENT MARKINGS SYMBOLS		TRAFFIC SIGNAL SYMBOLS		TRAFFIC SIGNAL SYSTEMS		TRAFFIC SIGNAL SYSTEMS		TRAFFIC SIGNAL SYSTEMS	
EXISTING	PROPOSED	DESCRIPTION	EXISTING	PROPOSED	DESCRIPTION	EXISTING	PROPOSED	DESCRIPTION	EXISTING	PROPOSED	DESCRIPTION
JB	JB	JERSEY BARRIER	JB	JB	PAVEMENT ARROW - WHITE	→	→	PAVEMENT ARROW - WHITE	→	→	PAVEMENT ARROW - WHITE
CB	CB	CATCH BASIN	CB	CB	LEGEND ONLY - WHITE	→	→	LEGEND ONLY - WHITE	→	→	LEGEND ONLY - WHITE
FP	FP	FLAG POLE	FP	FP	LEGEND "STOP" - WHITE	→	→	LEGEND "STOP" - WHITE	→	→	LEGEND "STOP" - WHITE
GP	GP	GAS PUMP	GP	GP	LEGEND "AHEAD" - WHITE	→	→	LEGEND "AHEAD" - WHITE	→	→	LEGEND "AHEAD" - WHITE
MS	MS	MISC MANHOLE	MS	MS	LEGEND "SIGNAL" - WHITE	→	→	LEGEND "SIGNAL" - WHITE	→	→	LEGEND "SIGNAL" - WHITE
WB	WB	WATER MAIN	WB	WB	STOP LINE - 12" WHITE LINE	→	→	STOP LINE - 12" WHITE LINE	→	→	STOP LINE - 12" WHITE LINE
EH	EH	ELECTRIC HANDHOLE	EH	EH	CROSSWALK - 12" WHITE LINES, 12" GAP	→	→	CROSSWALK - 12" WHITE LINES, 12" GAP	→	→	CROSSWALK - 12" WHITE LINES, 12" GAP
GG	GG	GAS GATE	GG	GG	SOLID WHITE LINE - 6"	→	→	SOLID WHITE LINE - 6"	→	→	SOLID WHITE LINE - 6"
BHL #	BHL #	BORING HOLE	BHL #	BHL #	SOLID YELLOW LINE - 6"	→	→	SOLID YELLOW LINE - 6"	→	→	SOLID YELLOW LINE - 6"
MW #	MW #	MONITORING WELL	MW #	MW #	BROKEN YELLOW LINE - 6" AT 3' LINE AND 9' GAP	→	→	BROKEN YELLOW LINE - 6" AT 3' LINE AND 9' GAP	→	→	BROKEN YELLOW LINE - 6" AT 3' LINE AND 9' GAP
TP #	TP #	TEST PIT	TP #	TP #	DOTTED WHITE LINE EXTENSION - 6" AT 2' LINE AND 6' GAP	→	→	DOTTED WHITE LINE EXTENSION - 6" AT 2' LINE AND 6' GAP	→	→	DOTTED WHITE LINE EXTENSION - 6" AT 2' LINE AND 6' GAP
CO.ED.	CO.ED.	COUNTY BOUNDARY	CO.ED.	CO.ED.	DOTTED YELLOW LINE EXTENSION - 6" AT 7' LINE AND 9' GAP	→	→	DOTTED YELLOW LINE EXTENSION - 6" AT 7' LINE AND 9' GAP	→	→	DOTTED YELLOW LINE EXTENSION - 6" AT 7' LINE AND 9' GAP
MON	MON	MONUMENT	MON	MON	DOUBLE WHITE LINE - 2, 6" LINES	→	→	DOUBLE WHITE LINE - 2, 6" LINES	→	→	DOUBLE WHITE LINE - 2, 6" LINES
SB	SB	STONE BOUND	SB	SB	DOUBLE YELLOW LINE - 2, 6" LINES	→	→	DOUBLE YELLOW LINE - 2, 6" LINES	→	→	DOUBLE YELLOW LINE - 2, 6" LINES
TP	TP	TOWNSHIP OR CITY BOUNDARY	TP	TP	CONTROL CABINET GROUND MOUNTED WITH FOUNDATION	→	→	CONTROL CABINET GROUND MOUNTED WITH FOUNDATION	→	→	CONTROL CABINET GROUND MOUNTED WITH FOUNDATION
UPL	UPL	UTILITY POLE OR GUY POLE	UPL	UPL	CONTROL CABINET POLE MOUNTED	→	→	CONTROL CABINET POLE MOUNTED	→	→	CONTROL CABINET POLE MOUNTED
UPL	UPL	UTILITY POLE WITH DOUBLE LIGHT	UPL	UPL	MAST ARM, SHAFT & BASE (ARM LENGTH AS NOTED)	→	→	MAST ARM, SHAFT & BASE (ARM LENGTH AS NOTED)	→	→	MAST ARM, SHAFT & BASE (ARM LENGTH AS NOTED)
UPL	UPL	UTILITY POLE WITH LIGHT	UPL	UPL	VEHICULAR SIGNAL HEAD (ALPHA-NUMERIC DESIGNATION AS NOTED)	→	→	VEHICULAR SIGNAL HEAD (ALPHA-NUMERIC DESIGNATION AS NOTED)	→	→	VEHICULAR SIGNAL HEAD (ALPHA-NUMERIC DESIGNATION AS NOTED)
UPL	UPL	UTILITY POLE	UPL	UPL	VEHICULAR SIGNAL HEAD, OPTICALLY PROGRAMMED	→	→	VEHICULAR SIGNAL HEAD, OPTICALLY PROGRAMMED	→	→	VEHICULAR SIGNAL HEAD, OPTICALLY PROGRAMMED
UPL	UPL	UTILITY POLE	UPL	UPL	VEHICULAR SIGNAL HEAD (REMOVED & RESET)	→	→	VEHICULAR SIGNAL HEAD (REMOVED & RESET)	→	→	VEHICULAR SIGNAL HEAD (REMOVED & RESET)
UPL	UPL	UTILITY POLE	UPL	UPL	FLASHING BEACON	→	→	FLASHING BEACON	→	→	FLASHING BEACON
UPL	UPL	UTILITY POLE	UPL	UPL	PEDESTRIAN SIGNAL HEAD	→	→	PEDESTRIAN SIGNAL HEAD	→	→	PEDESTRIAN SIGNAL HEAD
UPL	UPL	UTILITY POLE	UPL	UPL	PEDESTRIAN SIGNAL HEAD, OPTICALLY PROGRAMMED	→	→	PEDESTRIAN SIGNAL HEAD, OPTICALLY PROGRAMMED	→	→	PEDESTRIAN SIGNAL HEAD, OPTICALLY PROGRAMMED
UPL	UPL	UTILITY POLE	UPL	UPL	PULL BOX 12"x12" OR 24"x24" HANDHOLE	→	→	PULL BOX 12"x12" OR 24"x24" HANDHOLE	→	→	PULL BOX 12"x12" OR 24"x24" HANDHOLE
UPL	UPL	UTILITY POLE	UPL	UPL	LOOP DETECTOR	→	→	LOOP DETECTOR	→	→	LOOP DETECTOR
UPL	UPL	UTILITY POLE	UPL	UPL	PEDESTRIAN PUSH BUTTON, SIGN (DIRECTIONAL ARROW AS SHOWN) AND SADDLE	→	→	PEDESTRIAN PUSH BUTTON, SIGN (DIRECTIONAL ARROW AS SHOWN) AND SADDLE	→	→	PEDESTRIAN PUSH BUTTON, SIGN (DIRECTIONAL ARROW AS SHOWN) AND SADDLE
UPL	UPL	UTILITY POLE	UPL	UPL	PRE-EMPTION DETECTOR	→	→	PRE-EMPTION DETECTOR	→	→	PRE-EMPTION DETECTOR
UPL	UPL	UTILITY POLE	UPL	UPL	PRE-EMPTION CONFIRMATION STROBE	→	→	PRE-EMPTION CONFIRMATION STROBE	→	→	PRE-EMPTION CONFIRMATION STROBE
UPL	UPL	UTILITY POLE	UPL	UPL	SIGNAL CONDUIT (SINGLE RUN)	→	→	SIGNAL CONDUIT (SINGLE RUN)	→	→	SIGNAL CONDUIT (SINGLE RUN)
UPL	UPL	UTILITY POLE	UPL	UPL	SIGNAL CONDUIT (DOUBLE RUN)	→	→	SIGNAL CONDUIT (DOUBLE RUN)	→	→	SIGNAL CONDUIT (DOUBLE RUN)
UPL	UPL	UTILITY POLE	UPL	UPL	SIGNAL POST & BASE	→	→	SIGNAL POST & BASE	→	→	SIGNAL POST & BASE
UPL	UPL	UTILITY POLE	UPL	UPL	MAGNETIC DETECTOR	→	→	MAGNETIC DETECTOR	→	→	MAGNETIC DETECTOR
UPL	UPL	UTILITY POLE	UPL	UPL	SCHOOL ZONE SPEED LIMIT SIGN	→	→	SCHOOL ZONE SPEED LIMIT SIGN	→	→	SCHOOL ZONE SPEED LIMIT SIGN
UPL	UPL	UTILITY POLE	UPL	UPL	MICROWAVE OR ULTRASONIC DETECTOR	→	→	MICROWAVE OR ULTRASONIC DETECTOR	→	→	MICROWAVE OR ULTRASONIC DETECTOR
UPL	UPL	UTILITY POLE	UPL	UPL	VIDEO DETECTION CAMERA	→	→	VIDEO DETECTION CAMERA	→	→	VIDEO DETECTION CAMERA
UPL	UPL	UTILITY POLE	UPL	UPL	VIDEO DETECTION ZONE	→	→	VIDEO DETECTION ZONE	→	→	VIDEO DETECTION ZONE
UPL	UPL	UTILITY POLE	UPL	UPL	TRAFFIC SIGNAL	→	→	TRAFFIC SIGNAL	→	→	TRAFFIC SIGNAL
UPL	UPL	UTILITY POLE	UPL	UPL	CAB. CABINET	→	→	CAB. CABINET	→	→	CAB. CABINET
UPL	UPL	UTILITY POLE	UPL	UPL	CLOSED CIRCUIT VIDEO EQUIPMENT	→	→	CLOSED CIRCUIT VIDEO EQUIPMENT	→	→	CLOSED CIRCUIT VIDEO EQUIPMENT
UPL	UPL	UTILITY POLE	UPL	UPL	OVERLAP	→	→	OVERLAP	→	→	OVERLAP
UPL	UPL	UTILITY POLE	UPL	UPL	DESTRIAN	→	→	DESTRIAN	→	→	DESTRIAN
UPL	UPL	UTILITY POLE	UPL	UPL	TRAFFIC SIGNAL	→	→	TRAFFIC SIGNAL	→	→	TRAFFIC SIGNAL
UPL	UPL	UTILITY POLE	UPL	UPL	STEADY CIRCULAR RED	→	→	STEADY CIRCULAR RED	→	→	STEADY CIRCULAR RED
UPL	UPL	UTILITY POLE	UPL	UPL	STEADY CIRCULAR YELLOW	→	→	STEADY CIRCULAR YELLOW	→	→	STEADY CIRCULAR YELLOW
UPL	UPL	UTILITY POLE	UPL	UPL	FLASHING CIRCULAR RED	→	→	FLASHING CIRCULAR RED	→	→	FLASHING CIRCULAR RED
UPL	UPL	UTILITY POLE	UPL	UPL	FLASHING CIRCULAR YELLOW	→	→	FLASHING CIRCULAR YELLOW	→	→	FLASHING CIRCULAR YELLOW
UPL	UPL	UTILITY POLE	UPL	UPL	FLASHING YELLOW LEFT ARROW	→	→	FLASHING YELLOW LEFT ARROW	→	→	FLASHING YELLOW LEFT ARROW
UPL	UPL	UTILITY POLE	UPL	UPL	STEADY RED RIGHT ARROW	→	→	STEADY RED RIGHT ARROW	→	→	STEADY RED RIGHT ARROW
UPL	UPL	UTILITY POLE	UPL	UPL	STEADY YELLOW RIGHT ARROW	→	→	STEADY YELLOW RIGHT ARROW	→	→	STEADY YELLOW RIGHT ARROW
UPL	UPL	UTILITY POLE	UPL	UPL	STEADY GREEN RIGHT ARROW	→	→	STEADY GREEN RIGHT ARROW	→	→	STEADY GREEN RIGHT ARROW
UPL	UPL	UTILITY POLE	UPL	UPL	STEADY RED LEFT ARROW	→	→	STEADY RED LEFT ARROW	→	→	STEADY RED LEFT ARROW
UPL	UPL	UTILITY POLE	UPL	UPL	STEADY YELLOW LEFT ARROW	→	→	STEADY YELLOW LEFT ARROW	→	→	STEADY YELLOW LEFT ARROW
UPL	UPL	UTILITY POLE	UPL	UPL	STEADY GREEN LEFT ARROW	→	→	STEADY GREEN LEFT ARROW	→	→	STEADY GREEN LEFT ARROW
UPL	UPL	UTILITY POLE	UPL	UPL	STEADY WALK (PERSON WALKING) - LUNAR WHITE	→	→	STEADY WALK (PERSON WALKING) - LUNAR WHITE	→	→	STEADY WALK (PERSON WALKING) - LUNAR WHITE
UPL	UPL	UTILITY POLE	UPL	UPL	STEADY DON'T WALK (HAND) - PORTLAND ORANGE	→	→	STEADY DON'T WALK (HAND) - PORTLAND ORANGE	→	→	STEADY DON'T WALK (HAND) - PORTLAND ORANGE
UPL	UPL	UTILITY POLE	UPL	UPL	FLASHING DON'T WALK (FLASHING HAND) - PORTLAND ORANGE	→	→	FLASHING DON'T WALK (FLASHING HAND) - PORTLAND ORANGE	→	→	FLASHING DON'T WALK (FLASHING HAND) - PORTLAND ORANGE

GENERAL	DESCRIPTION	GENERAL	DESCRIPTION
AAOT	ANNUAL AVERAGE DAILY TRAFFIC	AAOT	ANNUAL AVERAGE DAILY TRAFFIC
ADJ	ADJUST	ADJ	ADJUST
APPROX.	APPROXIMATE	APPROX.	APPROXIMATE
ACOM PIPE	ASPHALT COATED CORRUGATED METAL PIPE	ACOM PIPE	ASPHALT COATED CORRUGATED METAL PIPE
ALM	ALUMINUM	ALM	ALUMINUM
BT	BOTTOM OF CURB	BT	BOTTOM OF CURB
BC	BOUND	BC	BOUND
BD	BASELINE	BD	BASELINE
BL (or B)	BUILDING	BL (or B)	BUILDING
BLOG	BLOCK	BLOG	BLOCK
BO	BOTTOM OF SLOPE	BO	BOTTOM OF SLOPE
BOS	BOTTOM OF WALL	BOS	BOTTOM OF WALL
BOW	BRIDGE	BOW	BRIDGE
BR	BACK OF SIDEWALK	BR	BACK OF SIDEWALK
BSW	CATCH BASIN	BSW	CATCH BASIN
CB	CATCH BASIN WITH CURB INLET	CB	CATCH BASIN WITH CURB INLET
CC	CEMENT CONCRETE	CC	CEMENT CONCRETE
CD	CEMENT CONCRETE MASONRY	CD	CEMENT CONCRETE MASONRY
CEM	CEMENT	CEM	CEMENT
CI	CURB INLET	CI	CURB INLET
CP	CAST IRON PIPE	CP	CAST IRON PIPE
CT	CHANGE IN TYPE	CT	CHANGE IN TYPE
CLF	CHAIN LINK FENCE	CLF	CHAIN LINK FENCE
CL	CENTERLINE	CL	CENTERLINE
CMP	CORRUGATED METAL PIPE	CMP	CORRUGATED METAL PIPE
CPP	CORRUGATED PLASTIC PIPE	CPP	CORRUGATED PLASTIC PIPE
CS	COUNTY BOUNDARY	CS	COUNTY BOUNDARY
CONC	CONCRETE	CONC	CONCRETE
COND	CONDUIT	COND	CONDUIT
CONT	CONTINUOUS	CONT	CONTINUOUS
CONST	CONSTRUCTION	CONST	CONSTRUCTION
CR GR	CROWN GRADE	CR GR	CROWN GRADE
DIV	DESIGN HOURLY VOLUME	DIV	DESIGN HOURLY VOLUME
DI	DROP INLET	DI	DROP INLET
DI	DUCTILE IRON PIPE	DI	DUCTILE IRON PIPE
DW	DRIVEWAY	DW	DRIVEWAY
DWY	STEADY DON'T WALK - PORTLAND ORANGE	DWY	STEADY DON'T WALK - PORTLAND ORANGE
ELEV (or EL)	ELEVATION	ELEV (or EL)	ELEVATION
EMB	EMBANKMENT	EMB	EMBANKMENT
EOP	EDGE OF PAVEMENT	EOP	EDGE OF PAVEMENT
EXIS (or EX)	EXISTING	EXIS (or EX)	EXISTING
EXC	EXCAVATION	EXC	EXCAVATION
EX	EXPOSED	EX	EXPOSED
FRG	FRAME AND GRATE	FRG	FRAME AND GRATE
FDN	FOUNDATION	FDN	FOUNDATION
FLDSTN	FIELDS/STONE	FLDSTN	FIELDS/STONE
FM	FORCE MAIN	FM	FORCE MAIN
GAR	GARAGE	GAR	GARAGE
GD	GROUND	GD	GROUND
GG	GAS GATE	GG	GAS GATE
GI	GUTTER INLET	GI	GUTTER INLET
GR	GRAVEL	GR	GRAVEL
GRAN	GRAVEL	GRAN	GRAVEL
GRAV	GRAVEL	GRAV	GRAVEL
GRD	GUARD	GRD	GUARD
HDW	HEADWALL	HDW	HEADWALL
HMA	HOT MIX ASPHALT	HMA	HOT MIX ASPHALT
HOR	HORIZONTAL	HOR	HORIZONTAL
HYD	HYDRANT	HYD	HYDRANT
INV	INVERT	INV	INVERT
IS	INTERSECTION	IS	INTERSECTION
JUN	JUNCTION	JUN	JUNCTION
LC	LENGTH OF CURVE	LC	LENGTH OF CURVE
LB	LEACH BASIN	LB	LEACH BASIN
LP	LIGHT POLE or LOW POINT	LP	LIGHT POLE or LOW POINT
LT	LEFT	LT	LEFT
MAX	MAXIMUM	MAX	MAXIMUM
MB	MAILBOX	MB	MAILBOX
MH	MANHOLE	MH	MANHOLE
MIN	MINIMUM	MIN	MINIMUM
MN	MASSACHUSETTS HIGHWAY BOUND	MN	MASSACHUSETTS HIGHWAY BOUND
NC	NOT IN CONTRACT	NC	NOT IN CONTRACT
NO	NUMBER	NO	NUMBER
O.C.	ON CENTER	O.C.	ON CENTER
PC	POINT OF CURVATURE	PC	POINT OF CURVATURE

GENERAL	DESCRIPTION	GENERAL	DESCRIPTION
PCC	POINT OF COMPOUND CURVATURE	PCC	POINT OF COMPOUND CURVATURE
PCR	PEDESTRIAN CURB RAMP	PCR	PEDESTRIAN CURB RAMP
PGLL	PROFILE GRADE LINE	PGLL	PROFILE GRADE LINE
POT	POINT ON TANGENT	POT	POINT ON TANGENT
POT	POINT ON TANGENT	POT	POINT ON TANGENT
PRC	POINT OF REVERSE CURVATURE	PRC	POINT OF REVERSE CURVATURE
PROJ	PROJECT	PROJ	PROJECT
PSB	PLANTABLE SOIL BORROW	PSB	PLANTABLE SOIL BORROW
PT	POINT OF TANGENT	PT	POINT OF TANGENT
PVC	POLY-VINYL-CHLORIDE-PIPE	PVC	POLY-VINYL-CHLORIDE-PIPE
PVI	POINT OF VERTICAL INTERSECTION	PVI	POINT OF VERTICAL INTERSECTION
PVT	POINT OF VERTICAL TANGENCY	PVT	POINT OF VERTICAL TANGENCY
PWW	PAVED WATER WAY	PWW	PAVED WATER WAY
R&D	REMOVE AND DISPOSE	R&D	REMOVE AND DISPOSE
RCP	REINFORCED CONCRETE PIPE	RCP	REINFORCED CONCRETE PIPE
RD	ROADWAY	RD	ROADWAY
RD	ROADWAY	RD	ROADWAY
RE	REMOVE	RE	REMOVE
REM	REMOVE	REM	REMOVE
RETAIN	RETAIN WALL	RETAIN	RETAIN WALL
RY	REMOVE AND RESET	RY	REMOVE AND RESET
R&R	REMOVE AND STACK	R&R	REMOVE AND STACK
R&S	REMOVE AND STACK	R&S	REMOVE AND STACK
RT	RIGHT	RT	RIGHT
SB	STONE BOUND	SB	STONE BOUND
SD	SHOULDER	SD	SHOULDER
SHLD	SHOULDER	SHLD	SHOULDER
SH	SHIELD	SH	SHIELD
SH	SHIELD	SH	SHIELD
SP	STRAIN POLE	SP	STRAIN POLE
STA	STATION	STA	STATION
SSD	STOPPING SIGHT DISTANCE	SSD	STOPPING SIGHT DISTANCE
SHLO	STATE HIGHWAY LAYOUT LINE	SHLO	STATE HIGHWAY LAYOUT LINE
SW	SIDEWALK	SW	SIDEWALK
TAN	TANGENT DISTANCE OF CURVE/TRUCK %	TAN	TANGENT DISTANCE OF CURVE/TRUCK %
TEMP	TEMPORARY	TEMP	TEMPORARY
TC	TOP OF CURB	TC	TOP OF CURB
TOV	TOP OF SLOPE	TOV	TOP OF SLOPE
TOW	TOP OF WALL	TOW	TOP OF WALL
TS	TRAFFIC SIGNAL	TS	TRAFFIC SIGNAL
TS&B	TAPPING SLEEVE, VALVE AND BOX	TS&B	TAPPING SLEEVE, VALVE AND BOX
UP	UTILITY POLE	UP	UTILITY POLE
UP	UTILITY POLE w/ LIGHT	UP	UTILITY POLE w/ LIGHT
VAR	VARIABLES	VAR	VARIABLES
VERT	VERTICAL	VERT	VERTICAL
VC	VERTICAL CURVE	VC	VERTICAL CURVE
VCP	VERTICAL GRANITE CURB	VCP	VERTICAL GRANITE CURB
VGC	VERTICAL GRANITE CURB	VGC	VERTICAL GRANITE CURB
WG	WATER GATE	WG	WATER GATE

PAVEMENT NOTES

FULL DEPTH PAVEMENT BOX WIDENING

- 1-1/2" SUPERPAVE SURFACE COURSE 0.5 (SSC-0.5) OVER ASPHALT EMULSION FOR TACK COAT OVER
- INTERMEDIATE COURSE: 12.5 (ISC-12.5) OVER ASPHALT EMULSION FOR TACK COAT OVER
- BASE COURSE: 37.5 (BSC-37.5) OVER SUB-BASE
- 12" GRAVEL BORROW, TYPE B

FULL DEPTH PAVEMENT BOX WIDENING - 64" WIDE

- 1-1/2" SUPERPAVE SURFACE COURSE 0.5 (SSC-0.5) OVER ASPHALT EMULSION FOR TACK COAT OVER
- INTERMEDIATE COURSE: 12.5 (ISC-12.5) OVER ASPHALT EMULSION FOR TACK COAT OVER
- BASE COURSE: 37.5 (BSC-37.5) OVER SUB-BASE
- 6" HES CEMENT CONCRETE BASE COURSE OVER 8" GRAVEL BORROW, TYPE B

PAVEMENT MILLING AND OVERLAY

- 1-1/2" SUPERPAVE SURFACE COURSE 0.5 (SSC-0.5) OVER ASPHALT EMULSION FOR TACK COAT OVER
- PAVEMENT MILLING: 1-1/2" PAVEMENT MICROWELLING

CEMENT CONCRETE SIDEWALKS AND WHEELCHAIR RAMPS

- 4" CEMENT CONCRETE WALK SURFACE 4000 PSI, 34" 6"10 OVER
- 8" GRAVEL BORROW, TYPE B

HMA SIDEWALKS

- 1-1/4" SUPERPAVE SURFACE COURSE 0.5 (SSC-0.5) OVER 1-3/4" SUPERPAVE INTERMEDIATE COURSE 12.5 (ISC-12.5) OVER 8" GRAVEL BORROW, TYPE B

HMA DRIVEWAYS

- 2" SUPERPAVE SURFACE COURSE 0.5 (SSC-0.5) OVER 2" SUPERPAVE INTERMEDIATE COURSE 12.5 (ISC-12.5) OVER 8" GRAVEL BORROW, TYPE B

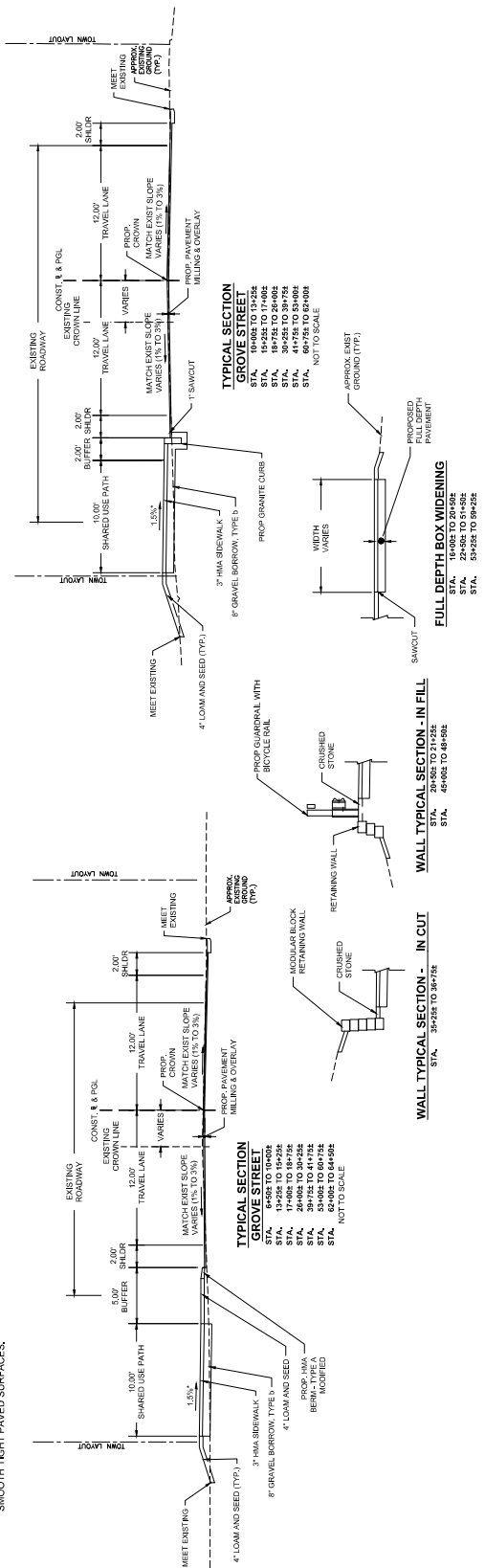
PAVEMENT NOTES

- ALL HMA FOR PATCHING, ASPHALT EMULSION FOR TACK COAT AND HMA JOINT SEALANT SHALL BE INSTALLED PER SECTION 450.
- TACK COAT SHALL BE APPLIED FOR UNIFORM COVERAGE OF 0.07 GALLONS PER SQUARE YARD FOR MILLED SURFACES, AND 0.08 GALLONS PER SQUARE YARD FOR SMOOTH TIGHT PAVED SURFACES.

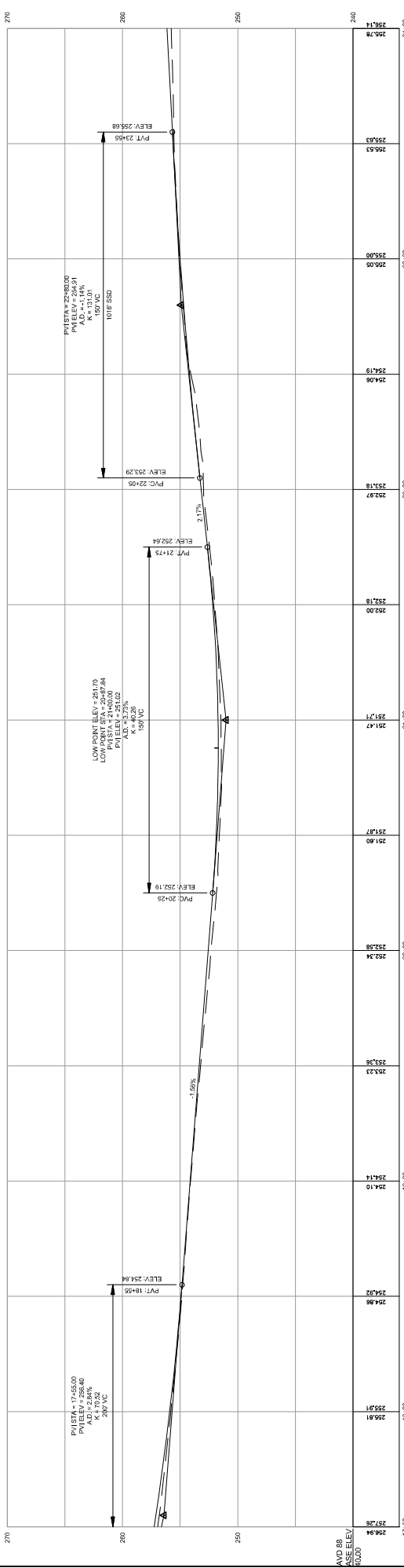
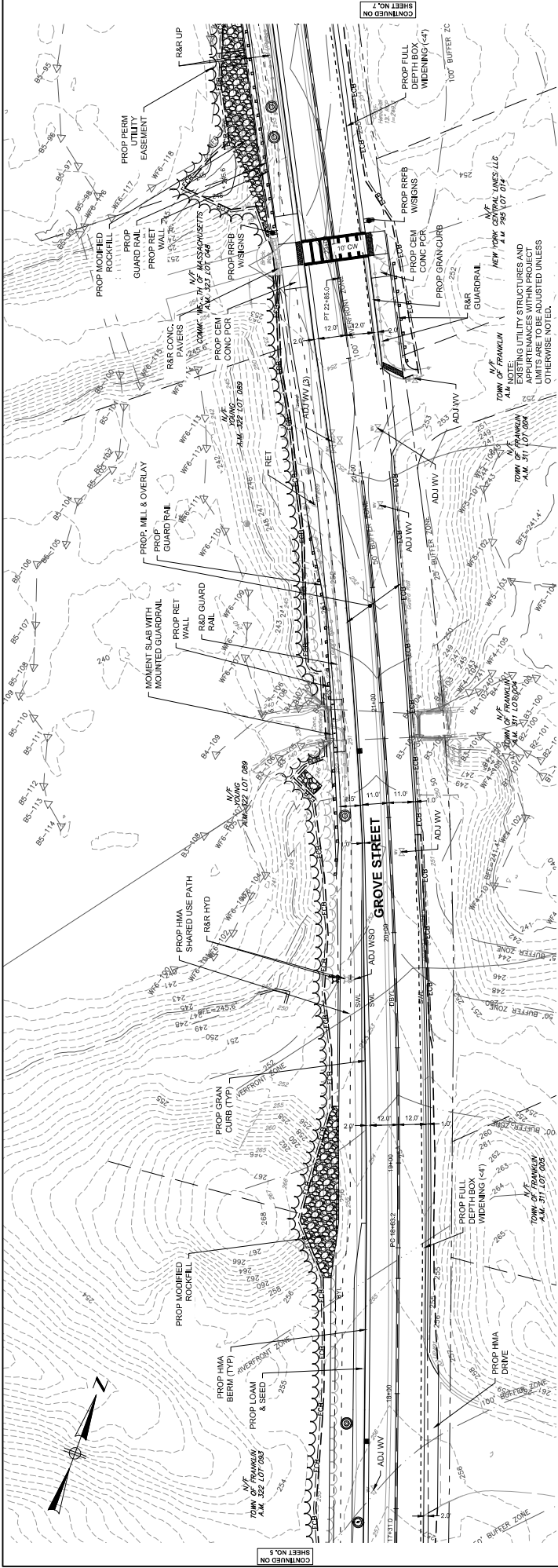
GENERAL NOTES

- HORIZONTAL CONTROL IN FEET, IS BASED ON THE MASSACHUSETTS STATE PLANE COORDINATE SYSTEM (MAD 93). ALL POINTS SHALL BE REFERENCED TO THE 1988 (NAD83) DATUM OF 1988 (NAD83). EXISTING 1-FT CONTOURS SHOWN WERE PROVIDED FROM NOAA LIDAR DATA.
- SURVEY PLAN HAS BEEN PREPARED BY GUERRE & HALLON, INC ENGINEERING & LAND SURVEYING ON MARCH 19, 2021. ALL WORK SHALL BE CONDUCTED BY A REGISTERED PROFESSIONAL ENGINEER. ALL IDENTIFYING RESOURCES WERE BLAZED AND LOCATED BY BETA GROUP, INC. OTHER IDENTIFIED UTILITIES AND DELINEATIONS WERE CONDUCTED ON MAY 13, 2021. THE CONTRACTOR SHALL VERIFY BASE PLAN INFORMATION SHOWN ON THE PLANS TO ENSURE THAT CONSTRUCTION CAN PROCEED AS INTENDED.
- THE LOCATION OF SUBSURFACE UTILITIES SHOWN IS APPROXIMATE AND NOT GUARANTEED TO BE COMPLETE OR ACCURATE. THE CONTRACTOR SHALL VERIFY THE LOCATIONS AND ELEVATIONS OF EXISTING UTILITY LINES AND STRUCTURES PRIOR TO COMMENCEMENT OF WORK. THE CONTRACTOR MUST NOTIFY DIG SAFETY 72 HOURS PRIOR TO ANY EXCAVATION, DEMOLITION OR EXPLOSIVE WORK IN PUBLIC OR PRIVATE WAYS OR UTILITY COMPANY RIGHT-OF-WAY OR EASEMENT.
- DRAINAGE ELEVATIONS ARE PROVIDED FOR DESIGN PURPOSES ONLY. THE CONTRACTOR SHALL VERIFY BY TEST FIT, THE LOCATIONS OF EXISTING UTILITIES WHICH MAY CONFLICT WITH THE PROPOSED DRAINAGE DESIGN. ANY FIELD ADJUSTMENTS REQUIRED WILL BE MADE AS APPROVED OR DIRECTED BY THE ENGINEER. ONLY AFTER THE FIELD ADJUSTMENTS ARE MADE, CONDITIONS FOR THE CONSTRUCTIBILITY OF THE DRAINAGE SYSTEM SHALL ANY STRUCTURES BE ORDERED.
- WHERE AN EXISTING UTILITY IS FOUND TO CONFLICT WITH THE PROPOSED WORK, THE LOCATION, ELEVATION AND INFORMATION FURNISHED TO THE ENGINEER FOR THE RESOLUTION OF THE CONFLICT.
- THE CONTRACTOR SHALL MAINTAIN ACCESS TO ABUTTING PROPERTIES AT ALL TIMES AND NOTIFY ALL ABUTTERS IN ADVANCE OF ANY INTERRUPTIONS TO ACCESS.
- THE CONTRACTOR SHALL ALTER THE MASONRY OF THE TOP SECTION OF ALL EXISTING DRAINAGE AND SANITARY STRUCTURES AS NECESSARY FOR THE CHANGES IN GRADE, AND RESET ALL SANITARY AND DRAINAGE FRAMES, GRATES AND BOXES TO THE PROPOSED FINISH SURFACE GRADE. REQUIRED NEW MASONRY SHALL BE CLAY BRICK CONFORMING TO M3652.
- THE CONTRACTOR SHALL MAKE ALL ARRANGEMENTS FOR THE ALTERATION AND ADJUSTMENT OF GAS, ELECTRIC, TELEPHONE, CABLE TV, FIRE ALARM AND ANY OTHER PRIVATE UTILITIES BY THE UTILITY COMPANIES. ALL UTILITY CASTING SHALL BE ADJUSTED TO FINISH GRADE BY THEIR RESPECTIVE OWNERS.
- AREAS OUTSIDE THE LIMITS OF PROPOSED WORK DISTURBED BY THE CONTRACTOR'S OPERATIONS SHALL BE RESTORED BY THE CONTRACTOR TO THEIR ORIGINAL CONDITION AT THE CONTRACTOR'S EXPENSE.
- THE TERM "PROPOSED" (PROP.) MEANS WORK TO BE CONSTRUCTED USING NEW MATERIALS OR, WHERE APPLICABLE, RE-USING EXISTING MATERIALS IDENTIFIED AS "REMOVE AND RESET" (RAR).
- JOINTS BETWEEN NEW BITUMINOUS CONCRETE ROADWAY PAVEMENT AND SAWCUT EXISTING PAVEMENT SHALL BE SEALED WITH BITUMEN AND BACKSANDWICHED.
- DRAINAGE STRUCTURES SHALL BE RETAINED UNLESS NOTED OTHERWISE.

- CATCH BASIN AND MANHOLE FRAMES AND GRATES/OVERS SHALL CLEARLY ALIGN WITH THE OPENINGS IN THE PRECAST STRUCTURES AND THE EDGE OF THE ROADWAY.
- ALL CURB TIE DIMENSIONS ARE TO THE FACE OF THE CURB (GUTTER LINE) OR EDGE OF TRAVEL WAY.
- CONSTRUCTION BASELINE TIES ARE SHOWN ON CONSTRUCTION PLANS.
- THE LOCATION OF THE PROPOSED DRIVEWAY OPENINGS ARE SHOWN ON CONSTRUCTION PLANS. EXACT LOCATIONS MAY BE ADJUSTED IF NECESSARY OR AS REQUIRED BY THE ENGINEERS IN THE FIELD.
- CONTRACTOR SHALL VERIFY EXISTING GRADES, IF ANY ADJUSTMENT IS REQUIRED DUE TO DIFFERENT EXISTING GRADES FOUND IN THE FIELD, THE CONTRACTOR SHALL NOTIFY AND SEEK THE APPROVAL OF THE ENGINEER PRIOR TO PERFORMING THE WORK.
- IN FILL AREAS, TOP SOIL SHALL BE REMOVED FOR A DEPTH OF 12" MIN. OR AS DIRECTED BY THE ENGINEER. SUBGRADE AREAS WILL BE COMPACTED PRIOR TO THE PLACEMENT OF FILL MATERIAL.
- ALL NEW GRANITE CURB SHALL BE MASSDOT TYPE 2, UNLESS OTHERWISE NOTED ON THE PLANS.
- ALL NEW HMA CURB SHALL BE MASSDOT TYPE 2, UNLESS OTHERWISE NOTED ON THE PLANS.
- ALL PROPOSED PAVEMENT MARKINGS ON ROADWAYS SHALL BE REFLECTORIZED WHITE AND YELLOW EPOXY, AND THE LATEST VERSION OF THE MUTCD.
- SAFETY CONTROLS FOR CONSTRUCTION OPERATIONS SHALL BE IN ACCORDANCE WITH MASSDOT REQUIREMENTS AND THE LATEST VERSION OF THE MUTCD.
- TREES TO BE RETAINED WHICH RESTRICT SIGHT DISTANCE OR RESTRICT HORIZONTAL OR VERTICAL CLEARANCES SHALL BE TRIMMED AS REQUIRED BY THE ENGINEER.
- WHEN WORKING NEXT TO EXISTING WALLS, BEAMS, AND OTHER STRUCTURES, CONTRACTOR SHALL EXERCISE EXTREME CAUTION NOT TO DISTURB THE EXISTING STRUCTURES. ANY DAMAGE TO THE EXISTING STRUCTURES SHALL BE REPAIRED BY THE CONTRACTOR AT HIS OWN EXPENSE.
- ALL PAVEMENT MARKINGS AND/OR SIGN NOTES ARE SHOWN ON THE PLANS AND PAVEMENT MARKING PLANS.
- THE EXPOSED EDGES OF ALL LONGITUDINAL AND TRANSVERSE SAW CUT JOINTS SHALL BE TREATED WITH HOT POURED RUBBERIZED ASPHALT JOINT SEALANT MEETING MASSDOT SPECIFICATIONS.
- WHEN NEW CEMENT CONCRETE SIDEWALK MATCHES EXISTING CONCRETE SIDEWALK, SAWCUT EXISTING SIDEWALK AT NEAREST JOINT.

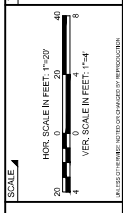


DRAWN BY: CL		REGISTERED PROFESSIONAL PREPARED BY: [Signature]	SUBCONSULTANT	TITLE: GROVE STREET IMPROVEMENTS PHASE 2	BETA JOB NO.: 19E13
DESIGNED BY: BB		SCALE: NONE	SCALE: NONE	GENERAL NOTES & TYPICAL SECTIONS	ISSUE DATE: 02/20/23
CHECKED BY: BM		REVISIONS:	REVISIONS:	FRANKLIN, MA	SHEET NO.: 3



STATION	ELEVATION	REVISIONS
256.40	256.40	
256.81	256.81	
254.86	254.86	
254.10	254.10	
254.14	254.14	
253.23	253.23	
253.36	253.36	
253.34	253.34	
252.58	252.58	
251.80	251.80	
251.47	251.47	
252.18	252.18	
252.97	252.97	
253.18	253.18	
254.06	254.06	
254.19	254.19	
255.00	255.00	
253.90	253.90	
253.30	253.30	
252.50	252.50	
251.70	251.70	
250.74	250.74	
250.74	250.74	
244.00	244.00	

GROVE STREET IMPROVEMENTS
CONSTRUCTION PLAN & PROFILE - SHEET 3
 FRANKLIN, MA

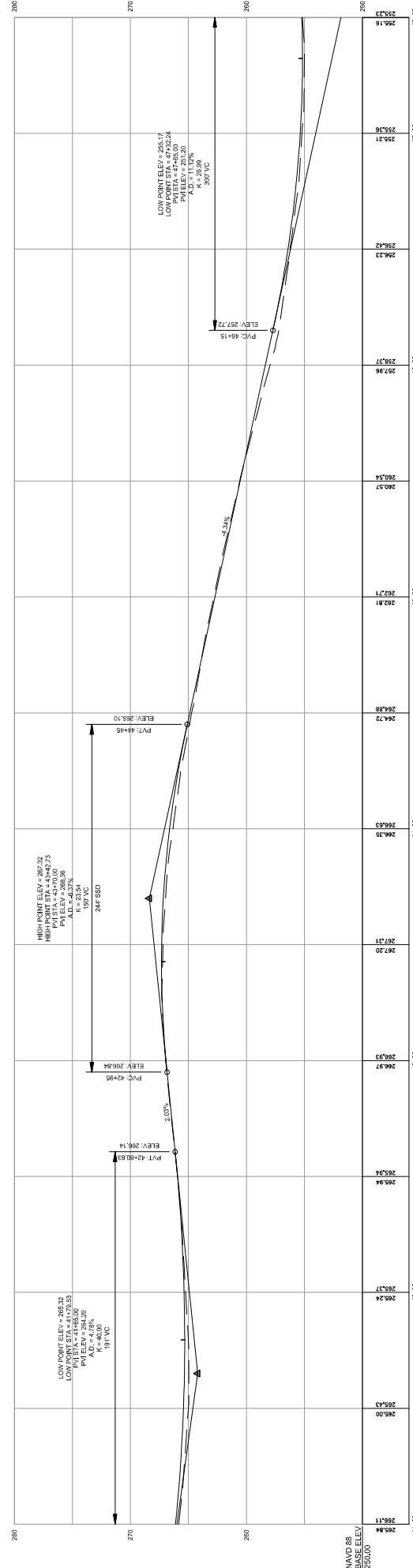
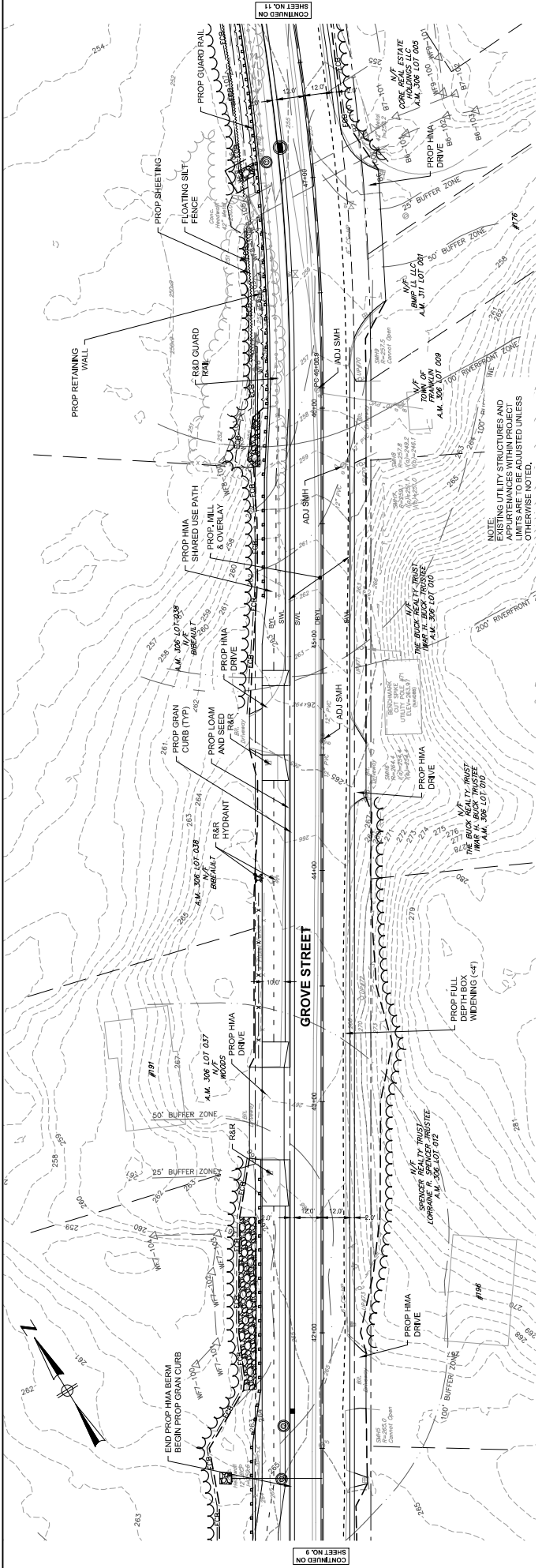


REGISTERED PROFESSIONAL PREPARED BY:
 DRAWN BY: CL
 DESIGNED BY: RS
 CHECKED BY: BB

NUMBER	DATE	MADE BY	CHECKED BY	REVISIONS

BETA JOB NO. 10613
 ISSUE DATE 02/2023
 SHEET NO. 6

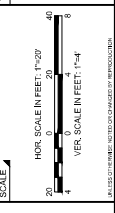
CONTINUED ON SHEET NO. 5
 CONTINUED ON SHEET NO. 7



STATION	ELEVATION
41+00	208.14
42+00	208.24
42+50	208.31
43+00	208.33
43+50	208.35
44+00	208.35
44+50	208.37
45+00	208.41
45+50	208.45
46+00	208.54
46+50	208.72
47+00	209.11

BETA JOB NO. 10613
 ISSUE DATE 02/2023
 SHEET NO. 10

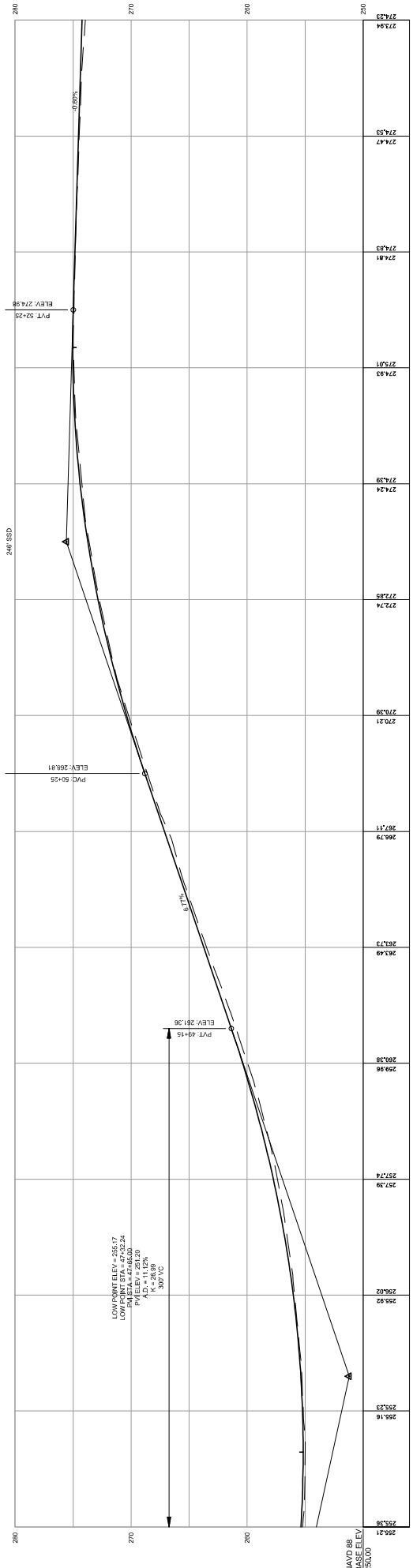
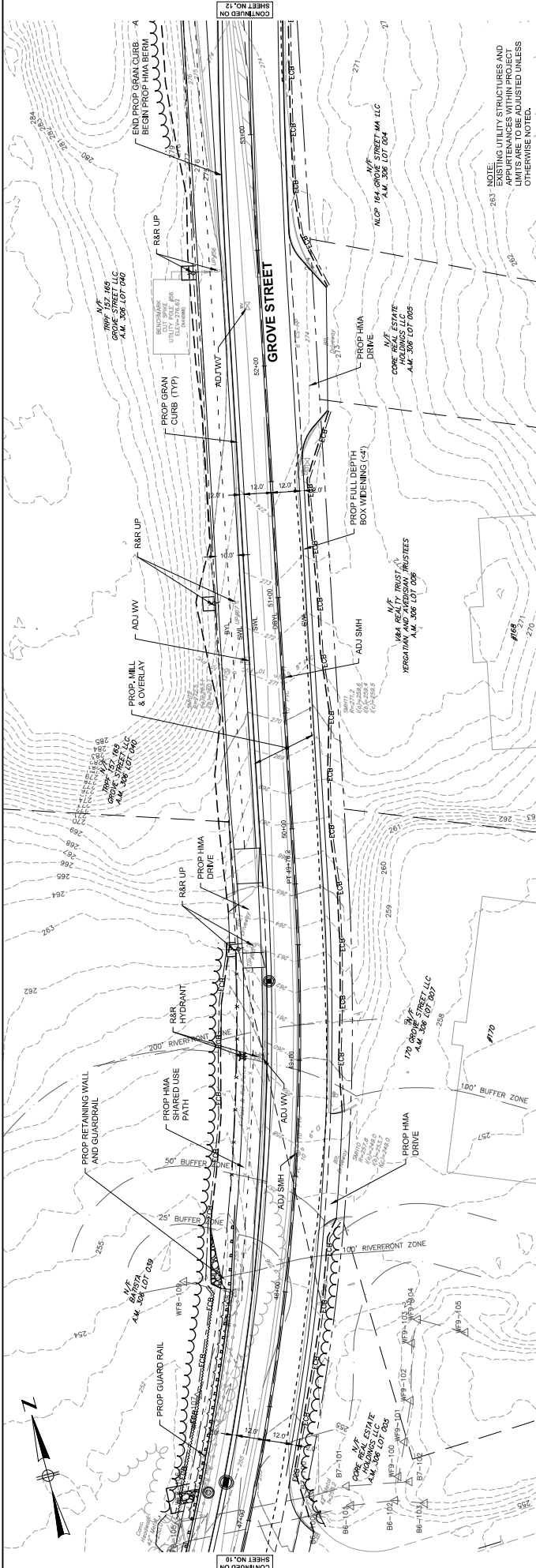
GROVE STREET IMPROVEMENTS
CONSTRUCTION PLAN & PROFILE - SHEET 7
 FRANKLIN, MA



REGISTERED PROFESSIONAL PREPARED BY

DRAWN BY: CL	DESIGNED BY: RS	CHECKED BY: BB
--------------	-----------------	----------------

NUMBER	DATE	MADE BY	CHECKED BY	REVISIONS



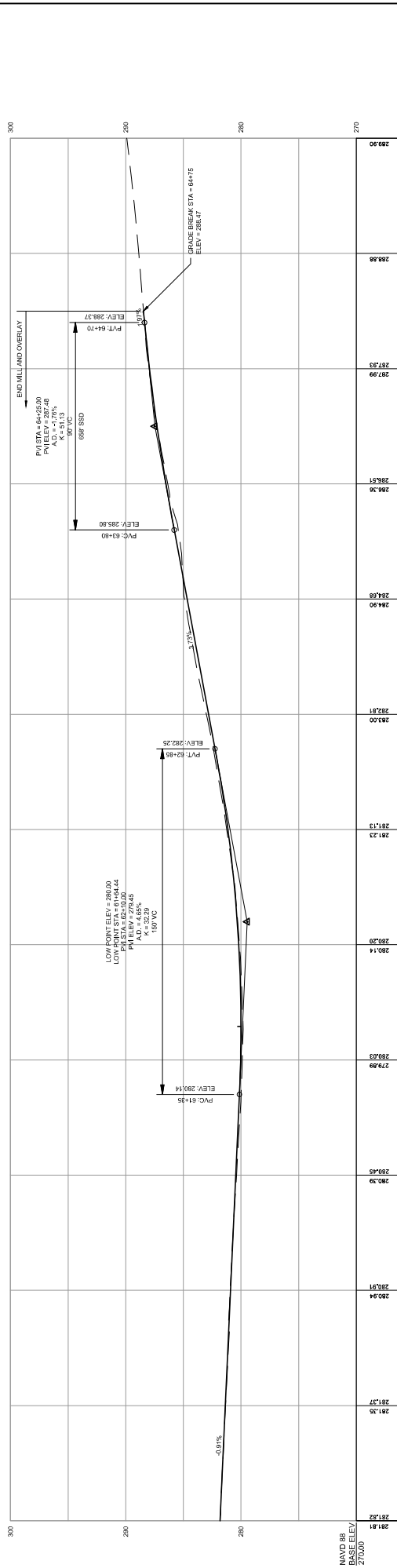
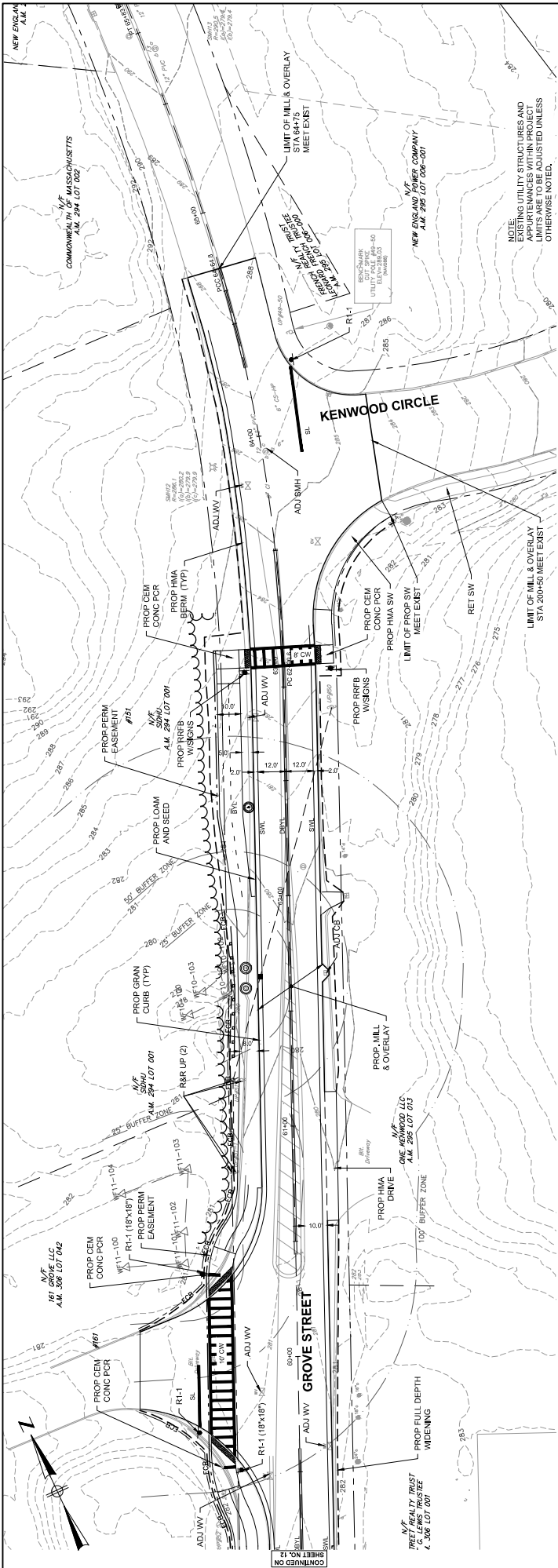
NO.	DATE	MADE BY	CHECKED BY	REVISIONS

DRAWN BY:	CL
DESIGNED BY:	RS
CHECKED BY:	BB

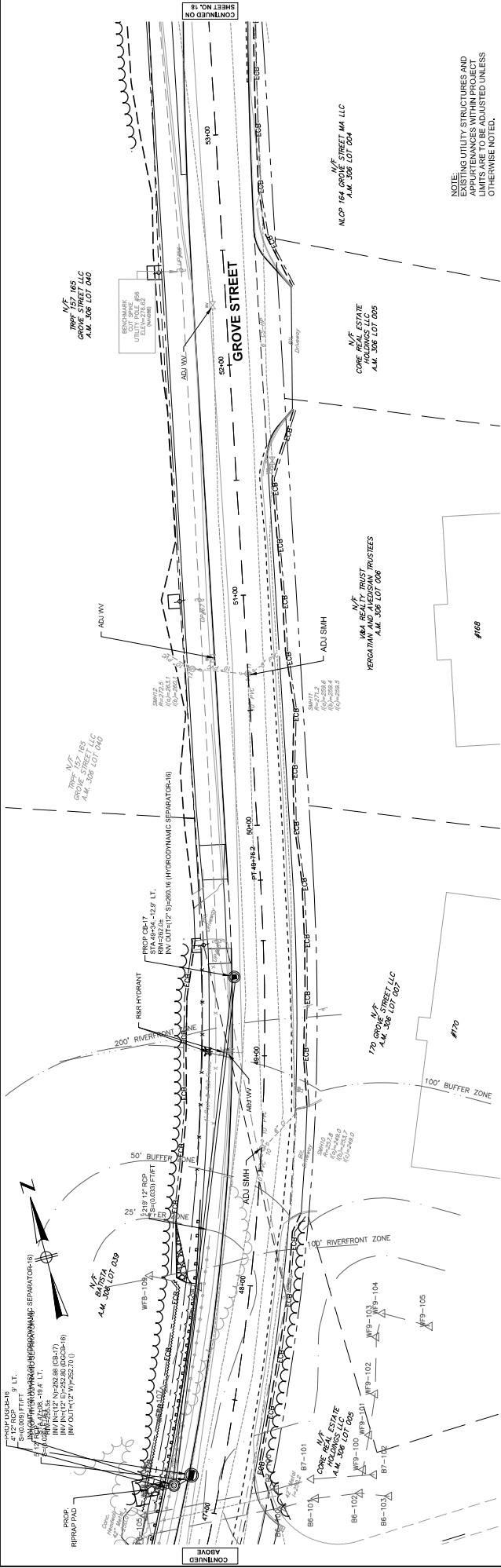
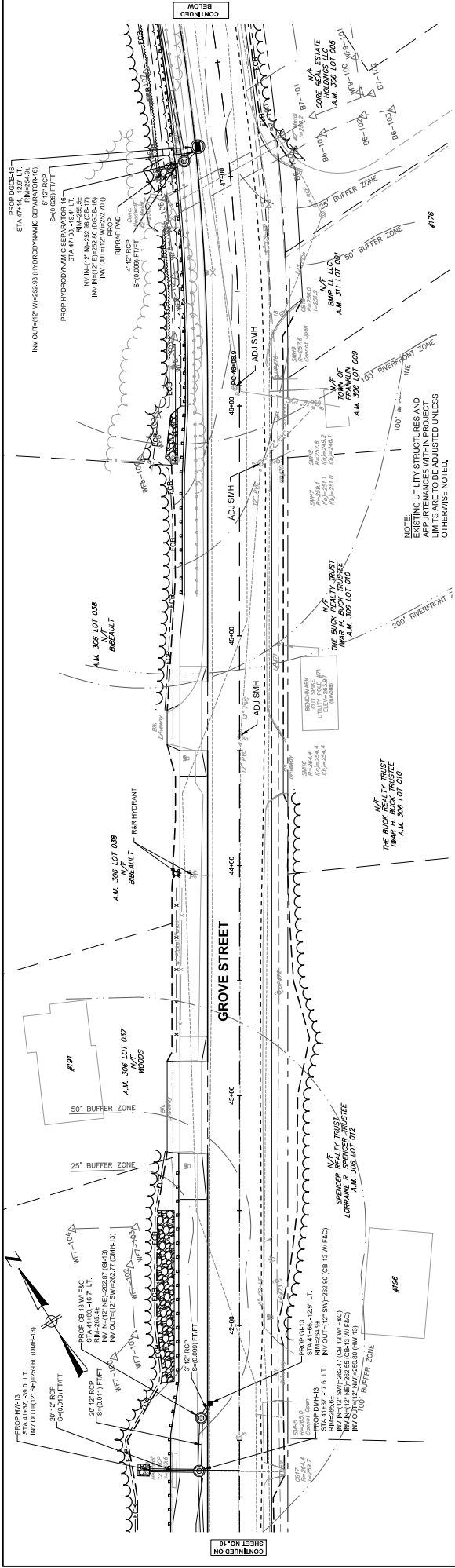
REGISTERED PROFESSIONAL	PREPARED BY	BETA	WWW.BETA-INC.COM
SUBCONSULTANT		SCALE	
50'-0" = 1" (VERTICAL)		51'-0" = 1" (HORIZONTAL)	
HOR. SCALE IN FEET: 1"=20'		VER. SCALE IN FEET: 1"=4'	
<p style="text-align: center;">GROVE STREET IMPROVEMENTS</p> <p style="text-align: center;">CONSTRUCTION PLAN & PROFILE - SHEET 8</p> <p style="text-align: center;">FRANKLIN, MA</p>			
BETA JOB NO.	10613	BETA JOB NO.	10613
ISSUE DATE	02/20/23	ISSUE DATE	02/20/23
SHEET NO.	11	SHEET NO.	11

DRAWN BY: CL
 DESIGNED BY: RS
 CHECKED BY: BB
 REGISTERED PROFESSIONAL PREPARED BY BETA WWW.BETA-INC.COM
 SUBCONSULTANT SCALE 50'-0" = 1" (VERTICAL) 51'-0" = 1" (HORIZONTAL)
 HOR. SCALE IN FEET: 1"=20' VER. SCALE IN FEET: 1"=4'
GROVE STREET IMPROVEMENTS
CONSTRUCTION PLAN & PROFILE - SHEET 8
 FRANKLIN, MA
 BETA JOB NO. 10613
 ISSUE DATE 02/20/23
 SHEET NO. 11

N&P 09 BASE ELEV 250.00
 250.21
 250.33
 250.70
 250.92
 250.98
 260.28
 260.36
 263.43
 263.73
 266.79
 267.14
 270.21
 270.39
 270.59
 270.74
 270.85
 270.93
 271.24
 271.28
 271.39
 271.42
 271.47
 271.51
 271.53
 271.54
 271.55
 271.56
 271.57
 271.58
 271.59
 271.60
 271.61
 271.62
 271.63
 271.64
 271.65
 271.66
 271.67
 271.68
 271.69
 271.70
 271.71
 271.72
 271.73
 271.74
 271.75
 271.76
 271.77
 271.78
 271.79
 271.80
 271.81
 271.82
 271.83
 271.84
 271.85
 271.86
 271.87
 271.88
 271.89
 271.90
 271.91
 271.92
 271.93
 271.94
 271.95
 271.96
 271.97
 271.98
 271.99
 272.00
 272.01
 272.02
 272.03
 272.04
 272.05
 272.06
 272.07
 272.08
 272.09
 272.10
 272.11
 272.12
 272.13
 272.14
 272.15
 272.16
 272.17
 272.18
 272.19
 272.20
 272.21
 272.22
 272.23
 272.24
 272.25
 272.26
 272.27
 272.28
 272.29
 272.30
 272.31
 272.32
 272.33
 272.34
 272.35
 272.36
 272.37
 272.38
 272.39
 272.40
 272.41
 272.42
 272.43
 272.44
 272.45
 272.46
 272.47
 272.48
 272.49
 272.50
 272.51
 272.52
 272.53
 272.54
 272.55
 272.56
 272.57
 272.58
 272.59
 272.60
 272.61
 272.62
 272.63
 272.64
 272.65
 272.66
 272.67
 272.68
 272.69
 272.70
 272.71
 272.72
 272.73
 272.74
 272.75
 272.76
 272.77
 272.78
 272.79
 272.80
 272.81
 272.82
 272.83
 272.84
 272.85
 272.86
 272.87
 272.88
 272.89
 272.90
 272.91
 272.92
 272.93
 272.94
 272.95
 272.96
 272.97
 272.98
 272.99
 273.00



65+50	65+00	64+00	63+00	62+00	61+00	60+00	59+50
281.82	281.51	281.33	281.13	280.93	280.73	280.53	280.33
280.94	280.81	280.68	280.55	280.42	280.29	280.16	280.03
280.15	280.02	279.89	279.76	279.63	279.50	279.37	279.24
280.37	280.24	280.11	280.03	279.99	279.95	279.91	279.87
280.51	280.38	280.25	280.12	280.00	279.87	279.74	279.61
280.65	280.52	280.39	280.26	280.13	280.00	279.87	279.74
280.79	280.66	280.53	280.40	280.27	280.14	280.01	279.88
280.93	280.80	280.67	280.54	280.41	280.28	280.15	280.02
281.07	280.94	280.81	280.68	280.55	280.42	280.29	280.16
281.21	281.08	280.95	280.82	280.69	280.56	280.43	280.30
281.35	281.22	281.09	280.96	280.83	280.70	280.57	280.44
281.49	281.36	281.23	281.10	280.97	280.84	280.71	280.58
281.63	281.50	281.37	281.24	281.11	280.98	280.85	280.72
281.77	281.64	281.51	281.38	281.25	281.12	280.99	280.86
281.91	281.78	281.65	281.52	281.39	281.26	281.13	281.00
282.05	281.92	281.79	281.66	281.53	281.40	281.27	281.14
282.19	282.06	281.93	281.80	281.67	281.54	281.41	281.28
282.33	282.20	282.07	281.94	281.81	281.68	281.55	281.42
282.47	282.34	282.21	282.08	281.95	281.82	281.69	281.56
282.61	282.48	282.35	282.22	282.09	281.96	281.83	281.70
282.75	282.62	282.49	282.36	282.23	282.10	281.97	281.84
282.89	282.76	282.63	282.50	282.37	282.24	282.11	281.98
283.03	282.90	282.77	282.64	282.51	282.38	282.25	282.12
283.17	283.04	282.91	282.78	282.65	282.52	282.39	282.26
283.31	283.18	283.05	282.92	282.79	282.66	282.53	282.40
283.45	283.32	283.19	283.06	282.93	282.80	282.67	282.54
283.59	283.46	283.33	283.20	283.07	282.94	282.81	282.68
283.73	283.60	283.47	283.34	283.21	283.08	282.95	282.82
283.87	283.74	283.61	283.48	283.35	283.22	283.09	282.96
284.01	283.88	283.75	283.62	283.49	283.36	283.23	283.10
284.15	284.02	283.89	283.76	283.63	283.50	283.37	283.24
284.29	284.16	284.03	283.90	283.77	283.64	283.51	283.38
284.43	284.30	284.17	284.04	283.91	283.78	283.65	283.52
284.57	284.44	284.31	284.18	284.05	283.92	283.79	283.66
284.71	284.58	284.45	284.32	284.19	284.06	283.93	283.80
284.85	284.72	284.59	284.46	284.33	284.20	284.07	283.94
284.99	284.86	284.73	284.60	284.47	284.34	284.21	284.08
285.13	285.00	284.87	284.74	284.61	284.48	284.35	284.22
285.27	285.14	285.01	284.88	284.75	284.62	284.49	284.36
285.41	285.28	285.15	285.02	284.89	284.76	284.63	284.50
285.55	285.42	285.29	285.16	285.03	284.90	284.77	284.64
285.69	285.56	285.43	285.30	285.17	285.04	284.91	284.78
285.83	285.70	285.57	285.44	285.31	285.18	285.05	284.92
285.97	285.84	285.71	285.58	285.45	285.32	285.19	285.06
286.11	285.98	285.85	285.72	285.59	285.46	285.33	285.20
286.25	286.12	285.99	285.86	285.73	285.60	285.47	285.34
286.39	286.26	286.13	286.00	285.87	285.74	285.61	285.48
286.53	286.40	286.27	286.14	286.01	285.88	285.75	285.62
286.67	286.54	286.41	286.28	286.15	286.02	285.89	285.76
286.81	286.68	286.55	286.42	286.29	286.16	286.03	285.90
286.95	286.82	286.69	286.56	286.43	286.30	286.17	286.04
287.09	286.96	286.83	286.70	286.57	286.44	286.31	286.18
287.23	287.10	286.97	286.84	286.71	286.58	286.45	286.32
287.37	287.24	287.11	286.98	286.85	286.72	286.59	286.46
287.51	287.38	287.25	287.12	286.99	286.86	286.73	286.60
287.65	287.52	287.39	287.26	287.13	287.00	286.87	286.74
287.79	287.66	287.53	287.40	287.27	287.14	287.01	286.88
287.93	287.80	287.67	287.54	287.41	287.28	287.15	287.02
288.07	287.94	287.81	287.68	287.55	287.42	287.29	287.16
288.21	288.08	287.95	287.82	287.69	287.56	287.43	287.30
288.35	288.22	288.09	287.96	287.83	287.70	287.57	287.44
288.49	288.36	288.23	288.10	287.97	287.84	287.71	287.58
288.63	288.50	288.37	288.24	288.11	287.98	287.85	287.72
288.77	288.64	288.51	288.38	288.25	288.12	287.99	287.86
288.91	288.78	288.65	288.52	288.39	288.26	288.13	288.00
289.05	288.92	288.79	288.66	288.53	288.40	288.27	288.14
289.19	289.06	288.93	288.80	288.67	288.54	288.41	288.28
289.33	289.20	289.07	288.94	288.81	288.68	288.55	288.42
289.47	289.34	289.21	289.08	288.95	288.82	288.69	288.56
289.61	289.48	289.35	289.22	289.09	288.96	288.83	288.70
289.75	289.62	289.49	289.36	289.23	289.10	288.97	288.84
289.89	289.76	289.63	289.50	289.37	289.24	289.11	288.98
290.03	289.90	289.77	289.64	289.51	289.38	289.25	289.12
290.17	290.04	289.91	289.78	289.65	289.52	289.39	289.26
290.31	290.18	290.05	289.92	289.79	289.66	289.53	289.40
290.45	290.32	290.19	289.96	289.83	289.70	289.57	289.44
290.59	290.46	290.33	290.00	289.87	289.74	289.61	289.48
290.73	290.60	290.47	290.04	289.91	289.78	289.65	289.52
290.87	290.74	290.61	290.08	289.95	289.82	289.69	289.56
291.01	290.88	290.75	290.12	289.99	289.86	289.73	289.60
291.15	291.02	290.89	290.16	290.03	289.90	289.77	289.64
291.29	291.16	291.03	290.20	290.07	289.94	289.81	289.68
291.43	291.30	291.17	290.24	290.11	289.98	289.85	289.72
291.57	291.44	291.31	290.28	290.15	290.02	289.89	289.76
291.71	291.58	291.45	290.32	290.19	290.06	289.93	289.80
291.85	291.72	291.59	290.36	290.23	290.10	289.97	289.84
291.99	291.86	291.73	290.40	290.27	290.14	289.91	289.78
292.13	292.00	291.87	290.44	290.31	290.18	289.95	289.82
292.27	292.14	292.01	290.48	290.35	290.22	289.99	289.86
292.41	292.28	292.15	290.52	290.39	290.26	290.03	289.90
292.55	292.42	292.29	290.56	290.43	290.30	290.07	289.94
292.69	292.56	292.43	290.60	290.47	290.34	290.11	289.98
292.83	292.70	292.57	290.64	290.51	290.38	290.15	289.92
292.97	292.84	292.71	290.68	290.55	290.42	290.19	289.96
293.11	292.98	292.85	290.72	290.59	290.46	290.23	289.90
293.25	293.12	292.99	290.76	290.63	290.50	290.27	289.94
293.39	293.26	293.13	290.80	290.67	290.54	290.31	289.98
293.53	293.40	293.27	290.84	290.71	290.58	290.35	290.02
293.67	293.54	293.41	290.88	290.75	290.62	290.39	290.06
293.81	293.68	293.55	290.92	290.79	290.66	290.43	290.10
293.95	293.82	293.69	290.96	290.83	290.70	290.47	290.14
294.09	293.96	293.83	291.00	290.87	290.74	290.51	290.18
294.23	294.10	293.97	291.04	290.91	290.78	290.55	290.22
294.37	294.24	294.11	291.08	290.95	290.82	290.59	290.26
294.51	294.38	294.25	291.12	291.00	290.86	290.63	290.30
294.65	294.52	294.39	291.16	291.04	290.90	290.67	290.34
294.79	294.66	294.53	291.20	291.08	290.94	290.71	290.38
294.93	294.80	294.67	291.24	291.12	290.98	290.75	290.42
295.07	294.94	294.81	291.28	291.16	291.02	290.79	290.46
295.21	295.08	294.95	291.32	291.20	291.06	290.83	290.50
295.35	295.22	295.09	291.36	291.24	291.10	290.87	290.54
295.49	295.36	295.23	291.40	291.28	291.14	290.91	290.58
295.63	295.50	295.37	291.44	291.32	291.18	290.95	290.62
295.77	295.64	295.51	291.48	291.36	291.22	290.99	290.66
295.91	295.78	295.65	291.52	291.40	291.26	291.03	290.70
296.05	295.92	295.79	291.56	291.44	291.30	291.07	290.74
296.19	296.06	295.93	291.60	291.48	29		

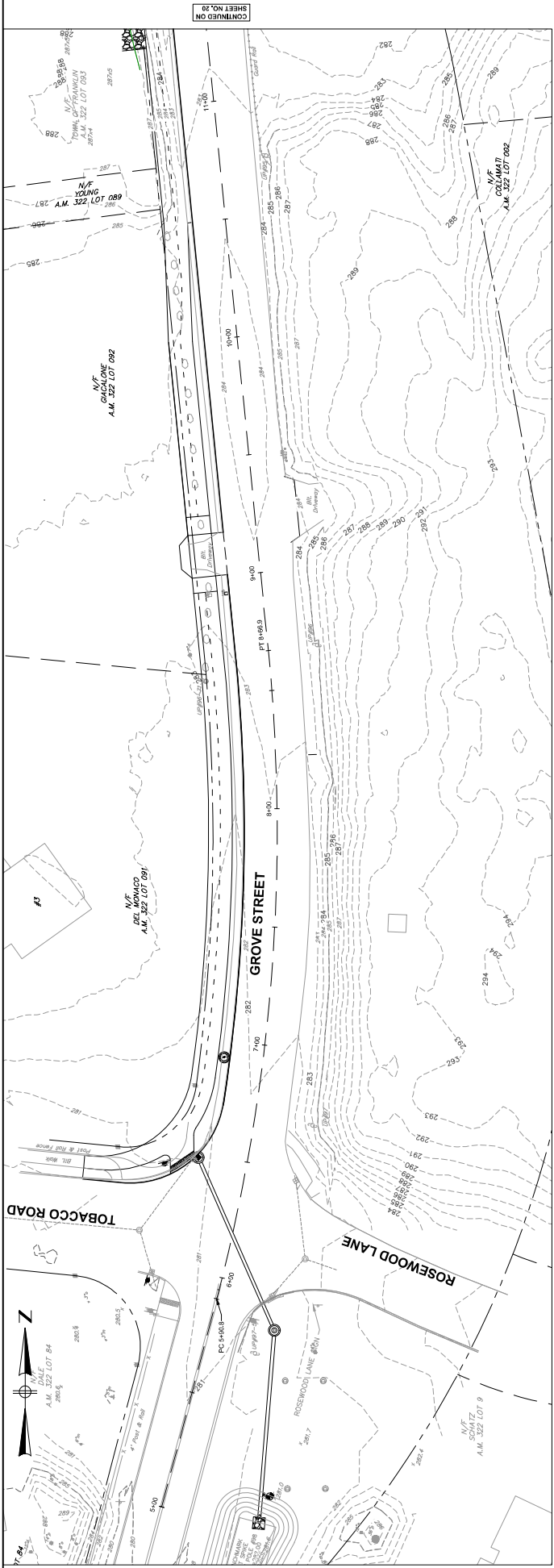


DRAWN BY: CL		REGISTERED PROFESSIONAL PREPARED BY: [Signature]		SUBCONSULTANT		SCALE: 1" = 20'		TITLE: GROVE STREET IMPROVEMENTS		BETA JOB NO.: 10613	
DESIGNED BY: RS		[Signature]		[Signature]		SCALE IN FEET: 1" = 20'		DRAINAGE AND UTILITY PLAN 4		ISSUE DATE: 02/20/23	
CHECKED BY: BB		[Signature]		[Signature]		SCALE IN FEET: 1" = 20'		FRANKLIN, MA		SHEET NO.: 17	
NUMBER	DATE	MADE BY	CHECKED BY	REVISIONS							

NOTE:
EXISTING UTILITY STRUCTURES AND
LIMITS ARE TO BE ADJUSTED UNLESS
OTHERWISE NOTED.

CONTINUED ON SHEET NO. 18

CONTINUED BELOW

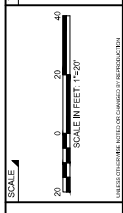


CONTINUED ON SHEET NO. 20

RESOURCE AREA LEGEND	LINE TYPE / PATCH	DESCRIPTION
Wetland	Blue dashed line	WETLAND BOUNDARY
Bank	Blue solid line	BANK BOUNDARY
25 FT Wetland Buffer	Blue dashed line with dots	LIMIT OF 25 FT WETLAND BUFFER ZONE
50 FT Wetland Buffer	Blue solid line with dots	LIMIT OF 50 FT WETLAND BUFFER ZONE
100 FT Wetland Buffer	Blue dashed line with larger dots	LIMIT OF 100 FT WETLAND BUFFER ZONE
200 FT Riverfront	Blue solid line with larger dots	LIMIT OF 200 FT RIVERFRONT ZONE
100 Year Flood	Green wavy line	100 YEAR FLOOD ZONE
100 Year Flood Impact	Green wavy line with dots	100 YEAR FLOOD PLAN IMPACT
Temporary Wetland Impact	Yellow wavy line with dots	TEMPORARY WETLAND IMPACT
Permanent Wetland Impact	Yellow wavy line with larger dots	PERMANENT WETLAND IMPACT
Wetland Replication Area	Yellow wavy line with diagonal lines	WETLAND REPLICATION AREA
Permanent Degraded 100' Riverfront	Orange wavy line with diagonal lines	PERMANENT DEGRADED 100' RIVERFRONT
Permanent Non-Degraded 100' Riverfront	Orange wavy line with vertical lines	PERMANENT NON-DEGRADED 100' RIVERFRONT
Temporary Degraded 200' Riverfront	Red wavy line with diagonal lines	TEMPORARY DEGRADED 200' RIVERFRONT
Permanent Non-Degraded 200' Riverfront	Red wavy line with vertical lines	PERMANENT NON-DEGRADED 200' RIVERFRONT
Temporary Non-Degraded 200' Riverfront	Red wavy line with horizontal lines	TEMPORARY NON-DEGRADED 200' RIVERFRONT

BETA JOB NO. 10613
 ISSUE DATE 09/2023
 SHEET NO. 19

GROVE STREET IMPROVEMENTS
 RESOURCE AREA PLAN 1
 FRANKLIN, MA

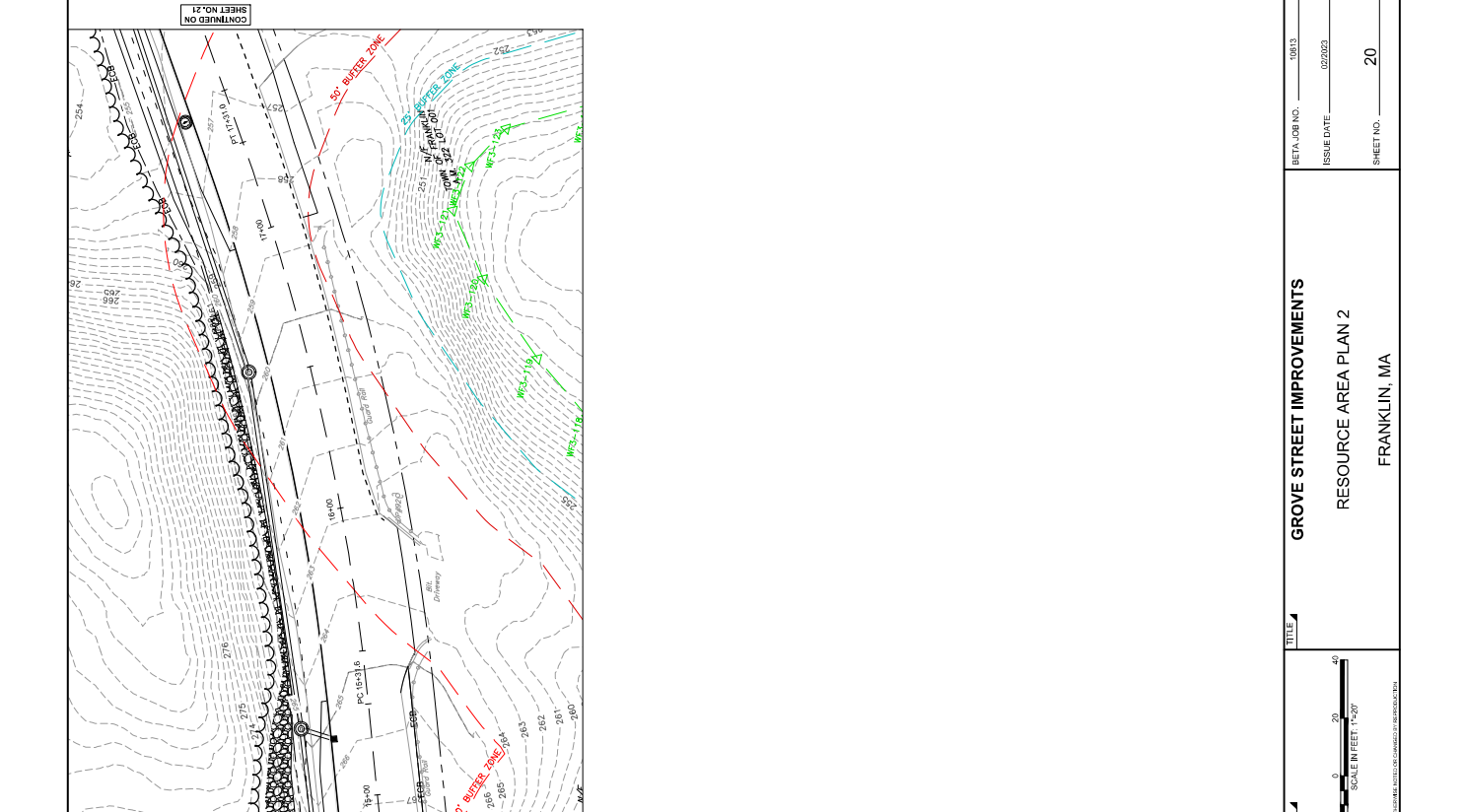


SUBCONSULTANT



REGISTERED PROFESSIONAL PREPARED BY
 DRAWN BY: CL
 DESIGNED BY: RS
 CHECKED BY: BB

NUMBER	DATE	MADE BY	CHECKED BY	REVISIONS



RESOURCE AREA LEGEND	LINE TYPE / PATCH	DESCRIPTION
WF	Blue dashed line	WETLAND BOUNDARY
BF	Blue solid line	BANK BOUNDARY
	Blue dashed line with dots	LIMIT OF 25 FT WETLAND BUFFER ZONE
	Blue solid line with dots	LIMIT OF 50 FT WETLAND BUFFER ZONE
	Blue dashed line with dots	LIMIT OF 100 FT WETLAND BUFFER ZONE
	Blue solid line with dots	LIMIT OF 200 FT RIVERFRONT ZONE
	Blue dashed line with dots	100 YEAR FLOOD ZONE
	Blue solid line with dots	100 YEAR FLOOD PLAIN IMPACT
	Blue dashed line with dots	TEMPORARY WETLAND IMPACT
	Blue solid line with dots	PERMANENT WETLAND IMPACT
	Blue dashed line with dots	WETLAND REPLICATION AREA
	Blue solid line with dots	PERMANENT DEGRADED 100' RIVERFRONT
	Blue dashed line with dots	PERMANENT NON-DEGRADED 100' RIVERFRONT
	Blue solid line with dots	TEMPORARY NON-DEGRADED 100' RIVERFRONT
	Blue dashed line with dots	PERMANENT DEGRADED 200' RIVERFRONT
	Blue solid line with dots	PERMANENT NON-DEGRADED 200' RIVERFRONT
	Blue dashed line with dots	TEMPORARY NON-DEGRADED 200' RIVERFRONT

NUMBER	DATE	MADE BY	CHECKED BY	REVISIONS

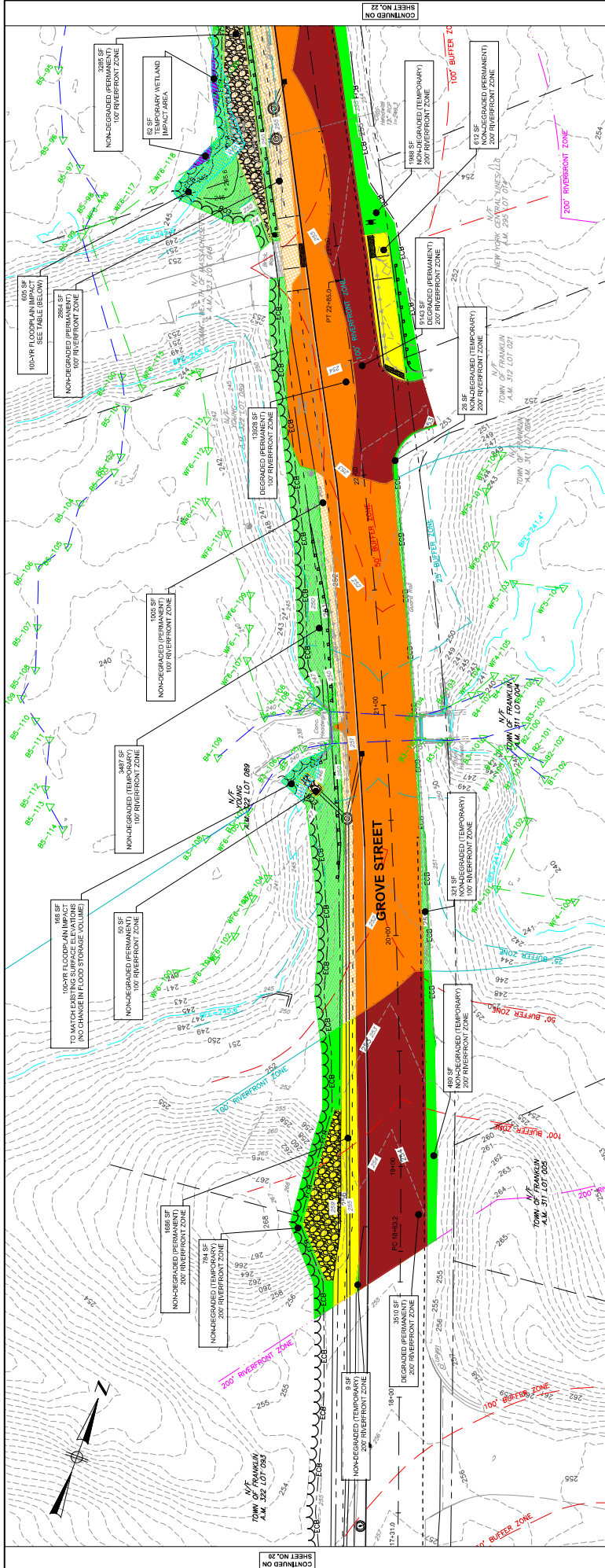
REGISTERED PROFESSIONAL PREPARED BY

BETA
www.BETA-inc.com

SCALE: 1" = 20'

TITLE: GROVE STREET IMPROVEMENTS
RESOURCE AREA PLAN 2
FRANKLIN, MA

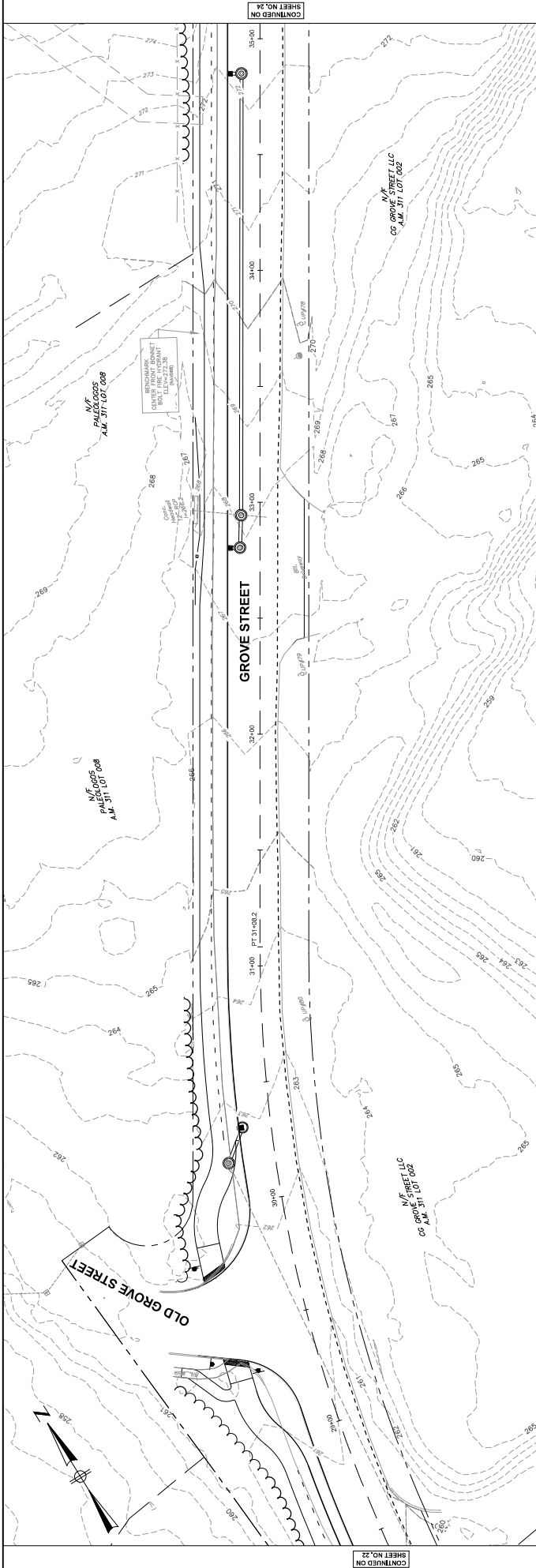
BETA JOB NO.: 10913
ISSUE DATE: 09/20/23
SHEET NO.: 20



Elevation Range	Floodplain Impact Volumes	Fill (CF)	Cut (CF)
244'-245'	7	15	
245'-245.6'	104	107	

RESOURCE AREA LEGEND	DESCRIPTION
LINE TYPE/HATCH	
WF	WETLAND BOUNDARY
BF	BANK BOUNDARY
(Blue dashed line)	LIMIT OF 25 FT WETLAND BUFFER ZONE
(Blue solid line)	LIMIT OF 50 FT WETLAND BUFFER ZONE
(Blue dashed line)	LIMIT OF 100 FT WETLAND BUFFER ZONE
(Blue solid line)	LIMIT OF 200 FT RIVERFRONT ZONE
(Blue dashed line)	100 YEAR FLOOD ZONE
(Blue solid line)	100 YEAR FLOOD PLAIN IMPACT
(Blue dashed line)	TEMPORARY WETLAND IMPACT
(Blue solid line)	PERMANENT WETLAND IMPACT
(Blue dashed line)	WETLAND REPLICATION AREA
(Blue solid line)	PERMANENT DEGRADED 100' RIVERFRONT
(Blue dashed line)	PERMANENT NON-DEGRADED 100' RIVERFRONT
(Blue solid line)	TEMPORARY NON-DEGRADED 100' RIVERFRONT
(Blue dashed line)	PERMANENT DEGRADED 200' RIVERFRONT
(Blue solid line)	PERMANENT NON-DEGRADED 200' RIVERFRONT
(Blue dashed line)	TEMPORARY NON-DEGRADED 200' RIVERFRONT

DRAWN BY: CL		 www.BETA-inc.com	 REGISTERED PROFESSIONAL ENGINEER	SUBCONSULTANT	SCALE: 1" = 20'	TITLE: 1	GROVE STREET IMPROVEMENTS		BETA JOB NO.: 106113	
DESIGNED BY: RS							RESOURCE AREA PLAN 3			ISSUE DATE: 09/20/23
CHECKED BY: SB							FRANKLIN, MA			



RESOURCE AREA LEGEND	LINE TYPE / PATCH	DESCRIPTION
WF	Blue dashed line	WETLAND BOUNDARY
BF	Blue solid line	BANK BOUNDARY
	Blue dashed line	LIMIT OF 25 FT WETLAND BUFFER ZONE
	Blue solid line	LIMIT OF 50 FT WETLAND BUFFER ZONE
	Blue dashed line	LIMIT OF 100 FT WETLAND BUFFER ZONE
	Blue solid line	LIMIT OF 200 FT RIVERFRONT ZONE
	Blue dashed line	100 YEAR FLOOD ZONE
	Blue solid line	100 YEAR FLOOD PLAIN IMPACT
	Blue dashed line	TEMPORARY WETLAND IMPACT
	Blue solid line	PERMANENT WETLAND IMPACT
	Blue dashed line	WETLAND REPLICATION AREA
	Blue solid line	PERMANENT DEGRADED 100' RIVERFRONT
	Blue dashed line	PERMANENT NON-DEGRADED 100' RIVERFRONT
	Blue solid line	TEMPORARY NON-DEGRADED 100' RIVERFRONT
	Blue dashed line	PERMANENT DEGRADED 200' RIVERFRONT
	Blue solid line	PERMANENT NON-DEGRADED 200' RIVERFRONT
	Blue dashed line	TEMPORARY NON-DEGRADED 200' RIVERFRONT

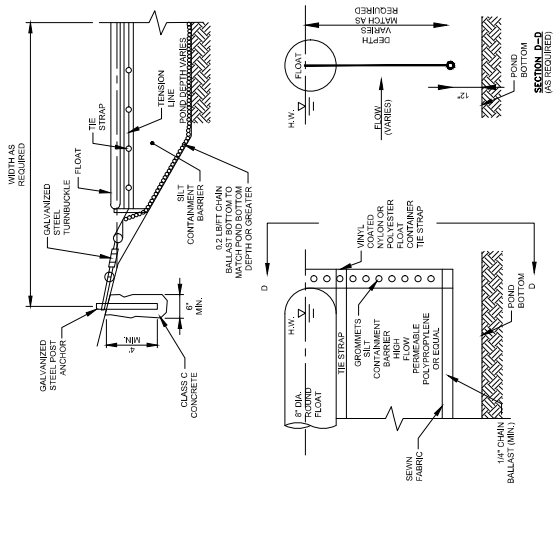
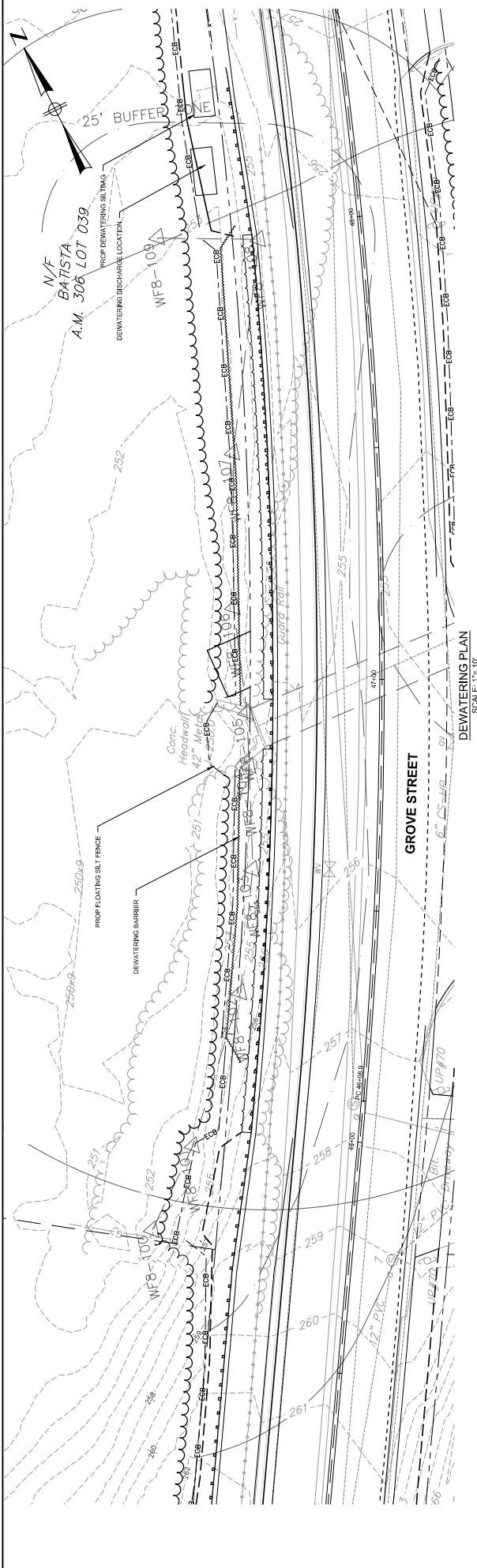
NUMBER	DATE	MADE BY	CHECKED BY	REVISIONS

DRAWN BY:	CL
DESIGNED BY:	RS
CHECKED BY:	BB

REGISTERED PROFESSIONAL	PREPARED BY	BETA	www.BETA-inc.com
SUBCONSULTANT		SCALE	
TITLE		SCALE IN FEET 1"=20'	



BETA JOB NO.	10613
ISSUE DATE	09/20/22
SHEET NO.	23

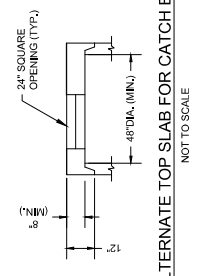
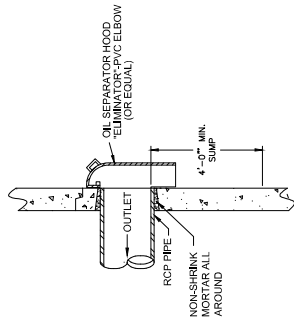
GROVE STREET IMPROVEMENTS
RESOURCE AREA PLAN 5
FRANKLIN, MA



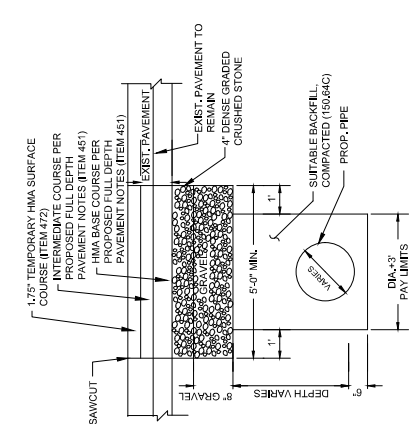
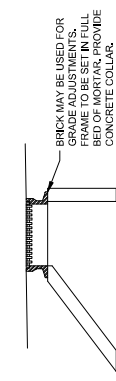
FLOATING SILT FENCE
NOT TO SCALE

NOTE:
-DEWATERING CONFIGURATION MAY CHANGE AFTER
COORDINATION WITH THE CONTRACTOR.

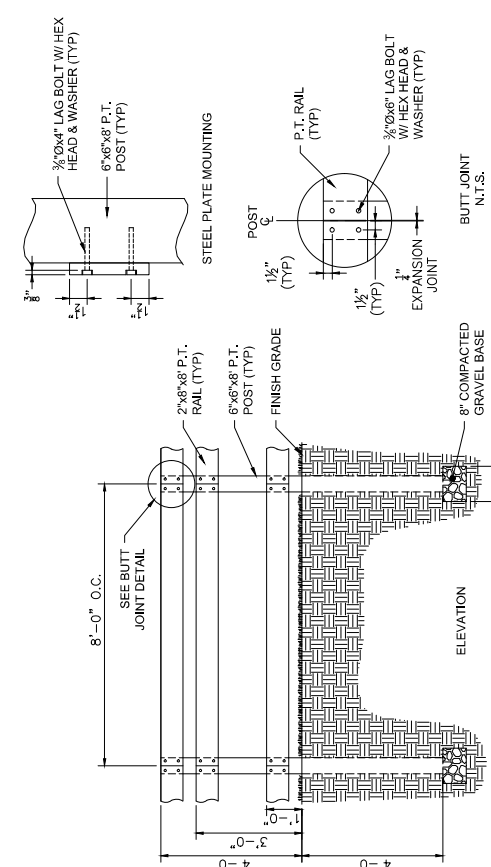
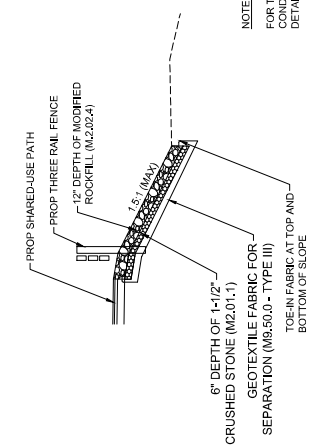
DRAWN BY: CL	DESIGNED BY: RS	CHECKED BY: BB	REVISIONS	REGISTERED PROFESSIONAL	PREPARED BY	 WWW.BETA-INC.COM		SUBCONSULTANT	SCALE	TITLE	GROVE STREET IMPROVEMENTS DEWATERING PLAN FRANKLIN, MA	BETA JOB NO. 10613
				ISSUE DATE 02/2023	SHEET NO. 30							



NOTES:
1. BASED ON ACTUAL FIELD CONDITIONS.
2. THE CONTRACTOR SHALL DETERMINE WHICH STYLE OF TOP SECTION SHOULD BE USED.

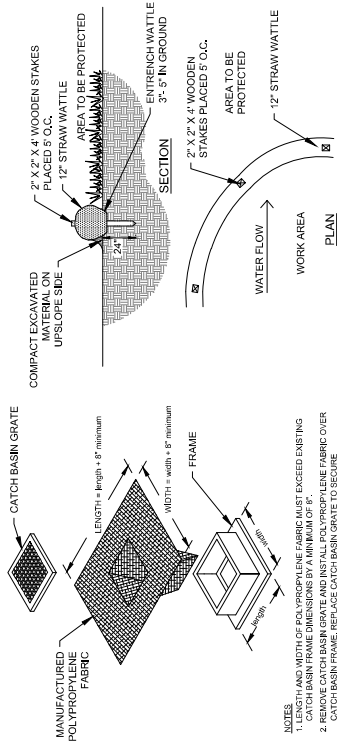


NOTES:
FOR TRAFFIC SIGNAL CHANNEL TRENCH DETAILS SEE SHEET 17



NOTES:
1. AFTER SETTING POSTS, TAMP BACKFILL FIRMLY IN PLACE.
2. DO NOT BACKFILL WITH CONCRETE.

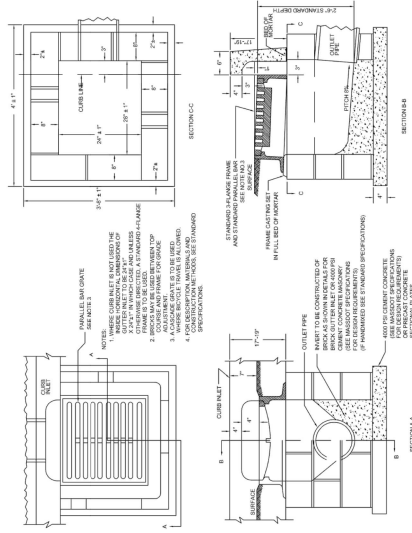
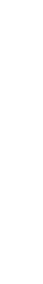
DRAWN BY: CL		REGISTERED PROFESSIONAL PREPARED BY	SCALE	TITLE	BETA JOB NO. 10613
DESIGNED BY: BB			NONE	GROVE STREET IMPROVEMENTS PHASE 2 CONS. DETAILS 2 FRANKLIN, MA	ISSUE DATE 02/2023
CHECKED BY: BM					SHEET NO. 32
NUMBER	DATE	MADE BY	CHECKED BY	REVISIONS	





- NOTES**
1. THIS PLAN AND MATERIALS FOR WORKING THE GRABER MAY BE ADDED TO EXISTING CATCH BASIN FRAME DIMENSIONS BY A MINIMUM OF 8".
 2. REMOVE CATCH BASIN GRATE AND INSTALL POLYPROPYLENE FABRIC OVER CATCH BASIN FRAME. REPLACE CATCH BASIN GRATE TO SECURE POLYPROPYLENE FABRIC IN PLACE.

CATCH BASIN EROSION CONTROL PROTECTION (TYP)
NOT TO SCALE

EROSION CONTROL BARRIER
NOT TO SCALE



GUTTER INLET
NOT TO SCALE

BETA JOB NO. 10613	<p>GROVE STREET IMPROVEMENTS PHASE 2 CONS. DETAILS 3 FRANKLIN, MA</p>	BETA JOB NO. 10613
ISSUE DATE 02/2023		ISSUE DATE 02/2023
SHEET NO. 33		SHEET NO. 33
TITLE 1	SCALE 1	NONE
SUBCONSULTANT		
REGISTERED PROFESSIONAL PREPARED BY	 www.BETA-inc.com	
REGISTERED PROFESSIONAL		
DRAWN BY: CL	DESIGNED BY: BB	CHECKED BY: BM
REVISIONS	REVISIONS	REVISIONS

