

MODIFICATION OF SITE PLAN JULY 14, 2022.

- BUILDINGS 1, 2 AND 3 WERE INCREASED IN SIZE FROM 60' x 252' TO 62'-8" x 254'-8".
- BUILDING ONE WAS EXTENDED TO THE WEST AND NORTH. BUILDING TWO WAS EXTENDED TO THE WEST, NORTH AND SOUTH BUILDING THREE WAS EXTENDED TO THE WEST AND SOUTH.
- THE BUILDING LIGHTS, PEDESTRIAN WALKWAYS, PARKING SPACES, CURB BUMPERS AND BOLLARDS WERE RELOCATED.
- THE PROPOSED CURBING, BETWEEN THE REAR OF THE BUILDINGS, WAS MODIFIED TO ALIGN WITH THE MODIFIED BUILDING WALLS.
- THE TRAVEL AISLES WERE REDUCED AT BUILDING ONE FROM 30' TO 27.3', AT BUILDINGS TWO AND THREE FROM 36' TO 33.3'.
- THE SPACING BETWEEN THE BUILDING WAS REDUCED FROM 40' TO 36'.

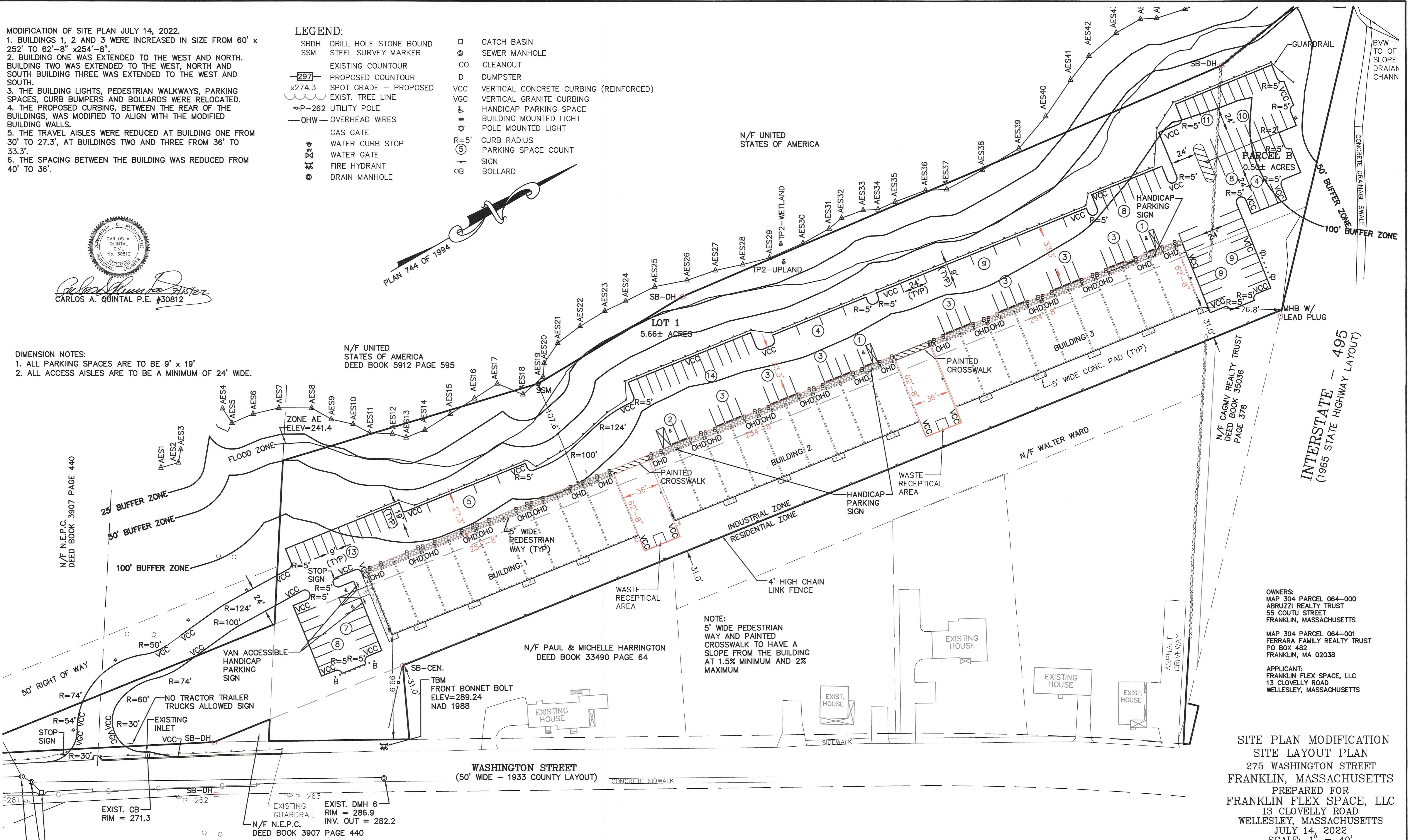
LEGEND:

- |        |                        |      |  |
|--------|------------------------|------|--|
| SB-DH  | DRILL HOLE STONE BOUND | □    | CATCH BASIN                            |
| SSM    | STEEL SURVEY MARKER    | ⊙    | SEWER MANHOLE                          |
| —      | EXISTING COUNTOUR      | CO   | CLEANOUT                               |
| —297—  | PROPOSED COUNTOUR      | D    | DUMPSTER                               |
| x274.3 | SPOT GRADE - PROPOSED  | VCC  | VERTICAL CONCRETE CURBING (REINFORCED) |
| —      | EXIST. TREE LINE       | VGC  | VERTICAL GRANITE CURBING               |
| ⊕P-262 | UTILITY POLE           | ⊕    | HANDICAP PARKING SPACE                 |
| —OHW—  | OVERHEAD WIRES         | ⊕    | BUILDING MOUNTED LIGHT                 |
| ⊕      | GAS GATE               | ☆    | POLE MOUNTED LIGHT                     |
| ⊕      | WATER CURB STOP        | R=5' | CURB RADIUS                            |
| ⊕      | WATER GATE             | ⊕    | PARKING SPACE COUNT                    |
| ⊕      | FIRE HYDRANT           | ⊕    | SIGN                                   |
| ⊕      | DRAIN MANHOLE          | ⊕B   | BOLLARD                                |



CARLOS A. QUINTAL P.E. #30812

- DIMENSION NOTES:
- ALL PARKING SPACES ARE TO BE 9' x 19'
  - ALL ACCESS AISLES ARE TO BE A MINIMUM OF 24' WIDE.



OWNERS:  
 MAP 304 PARCEL 064-000  
 ABRUZZI REALTY TRUST  
 55 COUTU STREET  
 FRANKLIN, MASSACHUSETTS

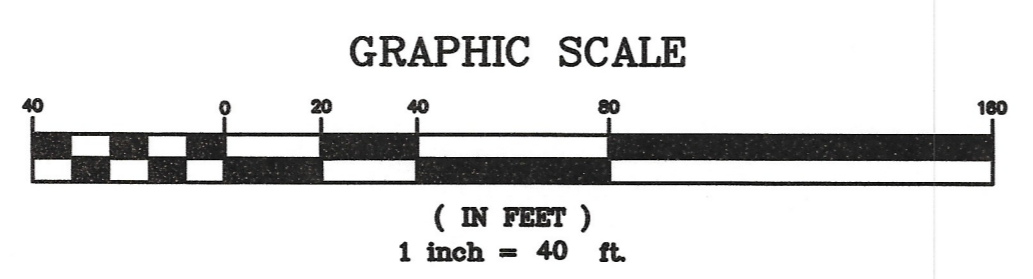
MAP 304 PARCEL 064-001  
 FERRARA FAMILY REALTY TRUST  
 PO BOX 482  
 FRANKLIN, MA 02038

APPLICANT:  
 FRANKLIN FLEX SPACE, LLC  
 13 CLOVELLY ROAD  
 WELLESLEY, MASSACHUSETTS

SITE PLAN MODIFICATION  
 SITE LAYOUT PLAN  
 275 WASHINGTON STREET  
 FRANKLIN, MASSACHUSETTS  
 PREPARED FOR  
 FRANKLIN FLEX SPACE, LLC  
 13 CLOVELLY ROAD  
 WELLESLEY, MASSACHUSETTS  
 JULY 14, 2022  
 SCALE: 1" = 40'

SITE PLAN APPROVAL  
 REQUIRED  
 FRANKLIN PLANNING BOARD

DATE



NO.	DATE	DESCRIPTION	BY

DATE	FIELD BY:	INT.
5/21	BL	BL
BK#	FIELD BOOK	PG#
7/22	RRG	RRG
7/22	RRG	RRG
7/22	COMP	COMP
7/22	CAQ	CAQ

**UNITED CONSULTANTS INC.**  
 850 FRANKLIN STREET SUITE 11D  
 WRENTHAM, MASSACHUSETTS 02093  
 508-384-8560 FAX 508-384-8566

DATE
JULY 14, 2022
SCALE
1" = 40'
PROJECT
UC1502
SHEET
1 of 1