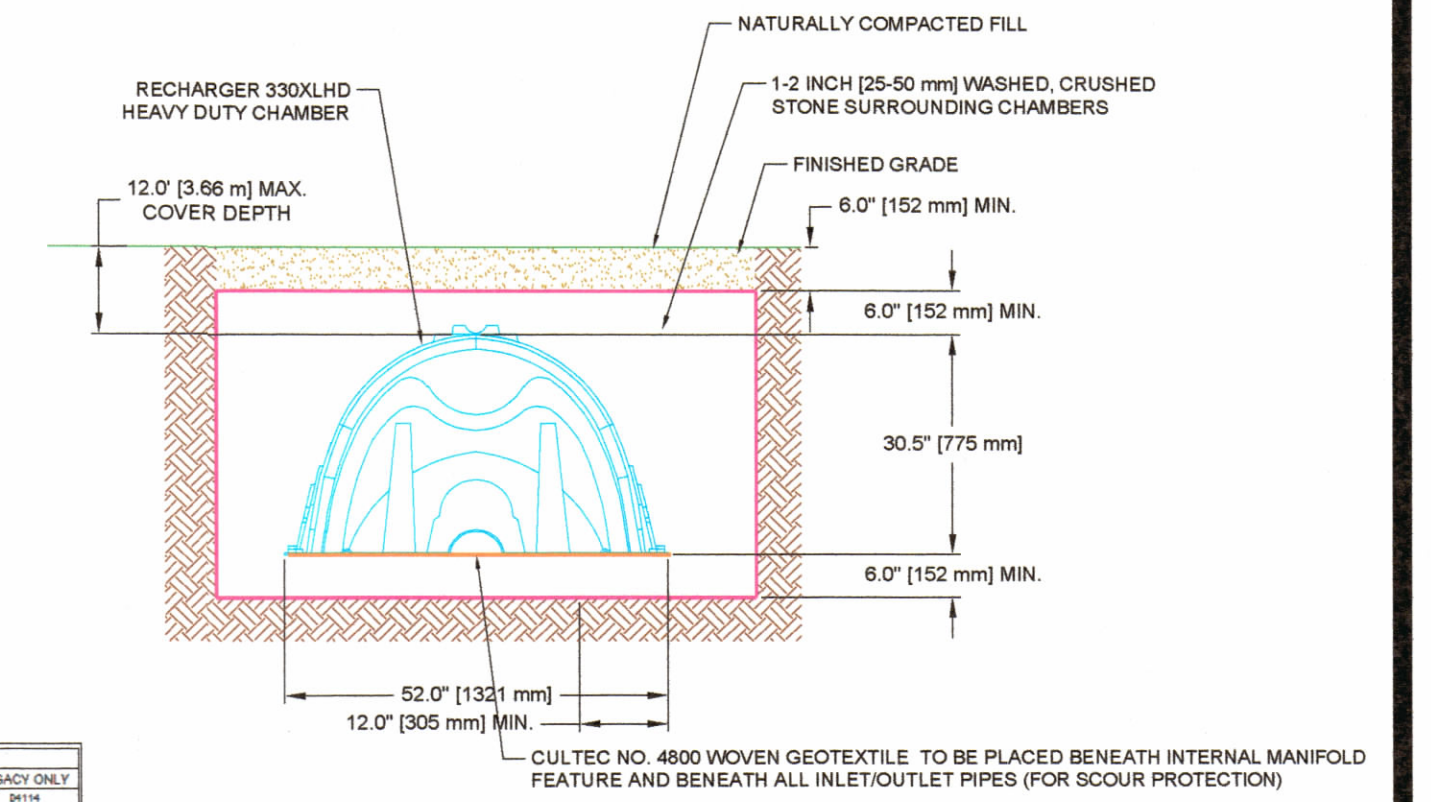
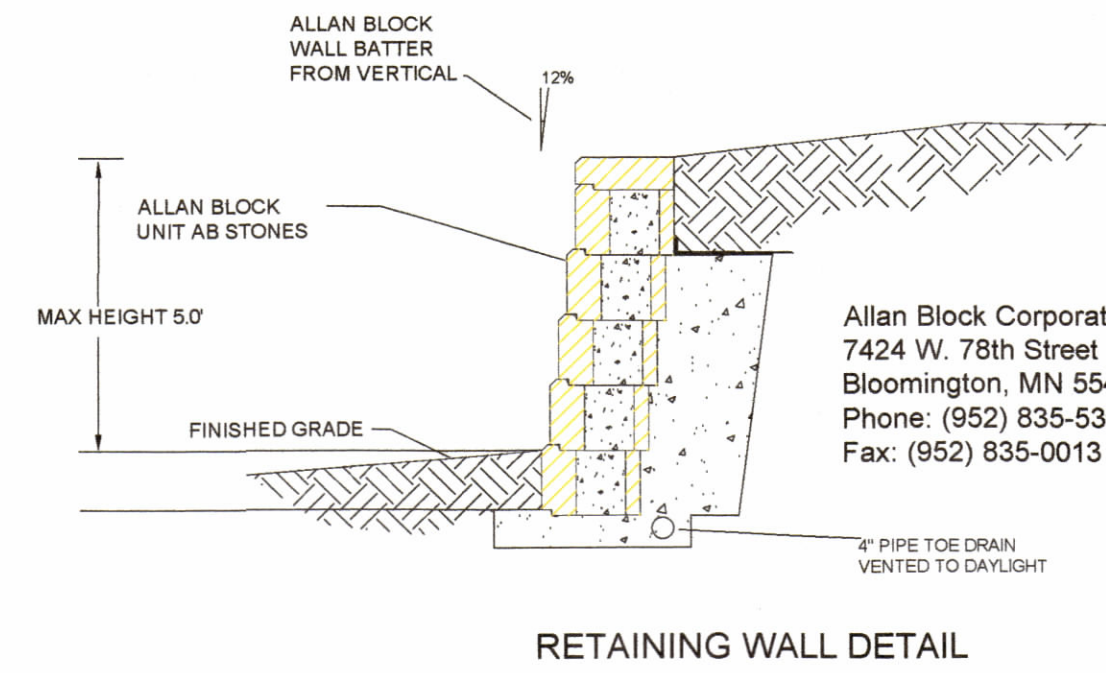
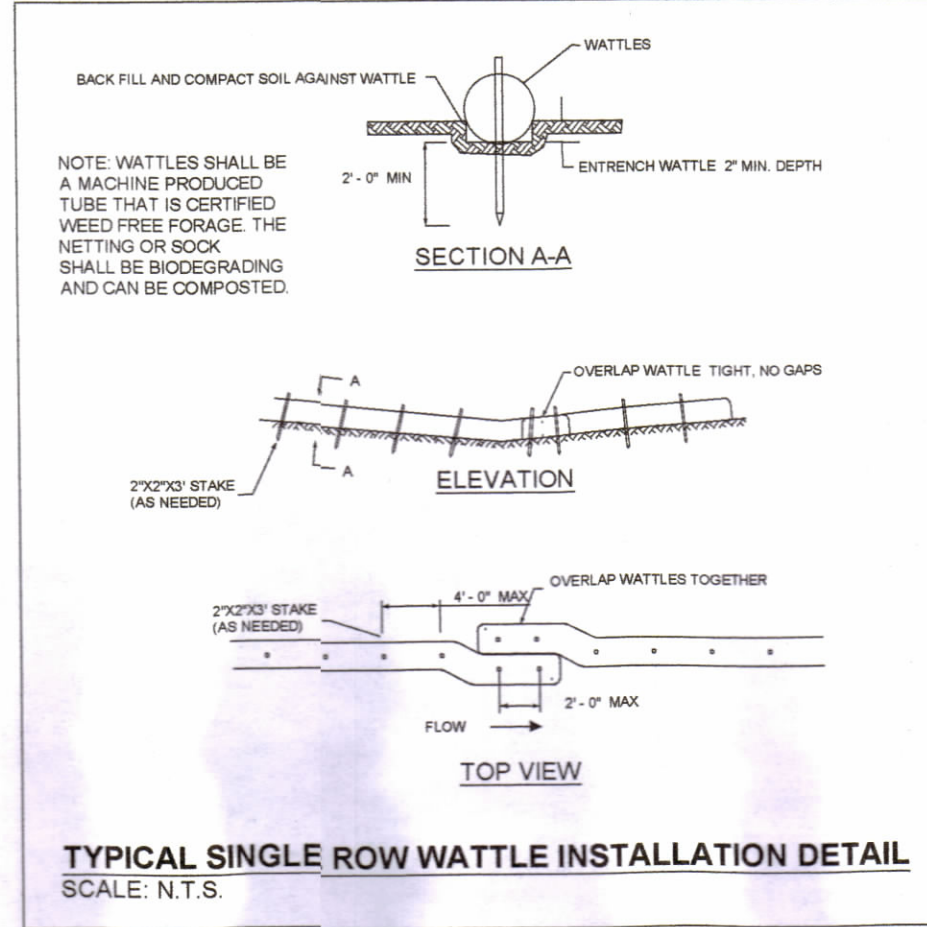
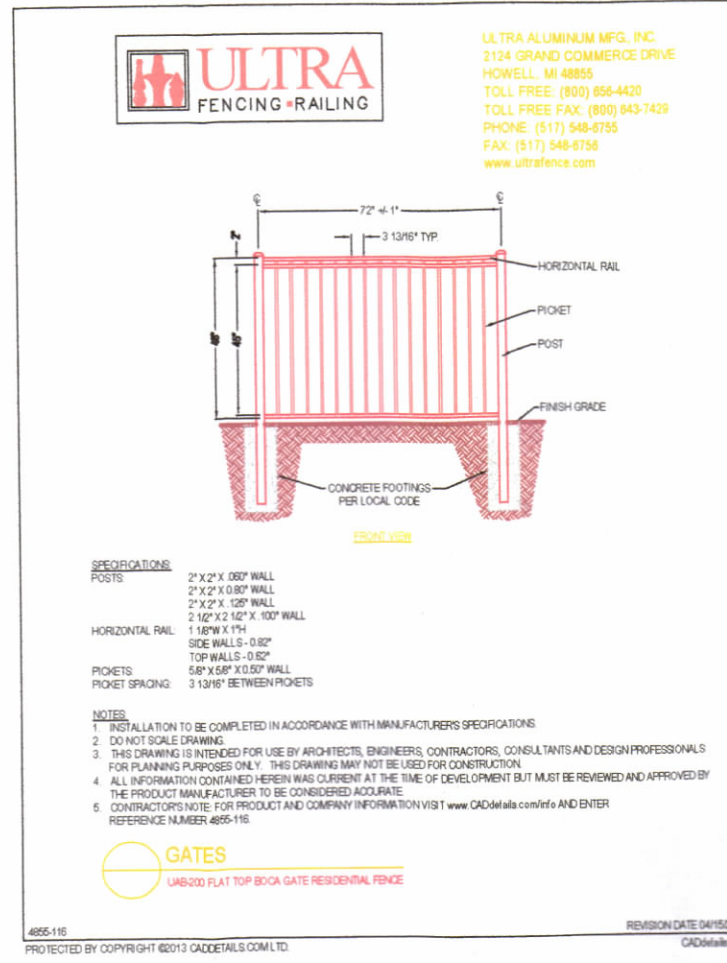
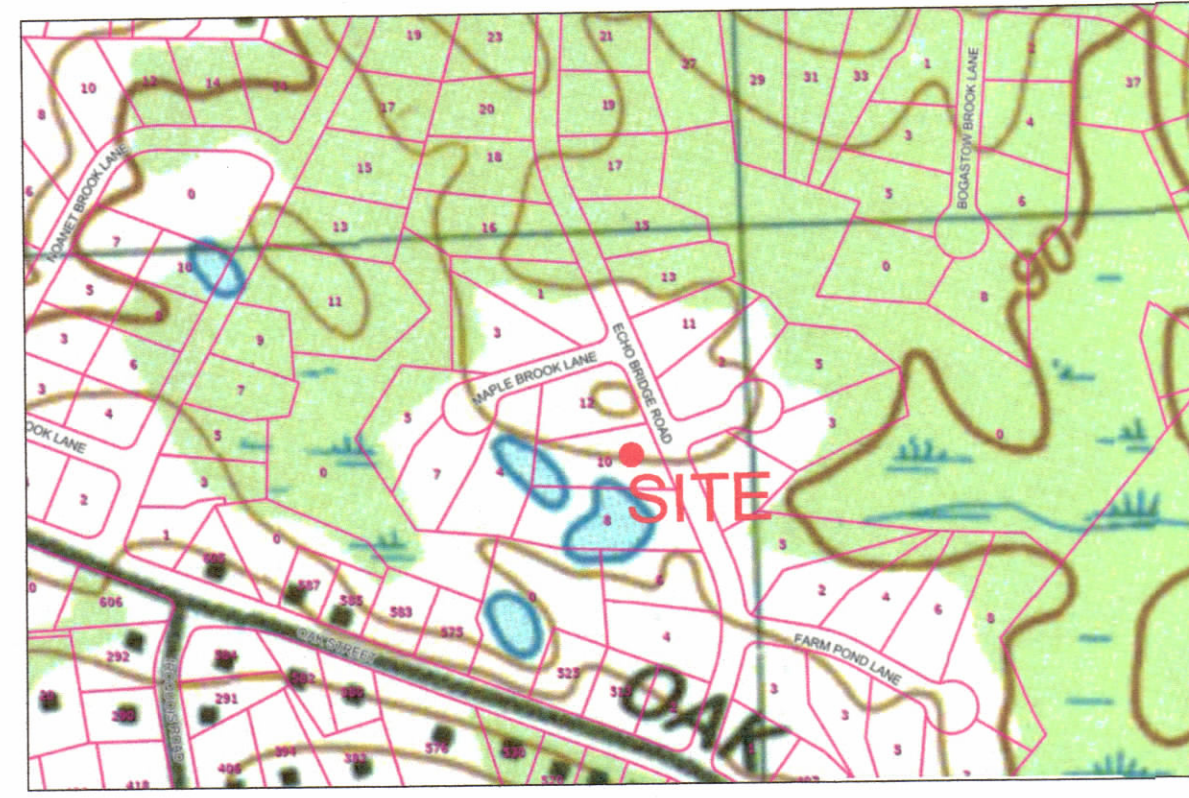


LOCUS NOT TO SCALE



FROM A TO:	FROM B TO:	FROM C TO:	FROM D TO:
A 10'-0"	B 10'-0"	C 10'-0"	D 10'-0"
E 10'-0"	F 10'-0"	G 10'-0"	H 10'-0"
I 10'-0"	J 10'-0"	K 10'-0"	L 10'-0"
M 10'-0"	N 10'-0"	O 10'-0"	P 10'-0"
Q 10'-0"	R 10'-0"	S 10'-0"	T 10'-0"
U 10'-0"	V 10'-0"	W 10'-0"	X 10'-0"
Y 10'-0"	Z 10'-0"	AA 10'-0"	AB 10'-0"

BILL OF MATERIALS	
QUANTITY	DESCRIPTION
1	1" POLYESTER CARTRIDGE ELEMENTS TO ORDER
1	1" UP STEEL TOP CORNER FILLER
2	2" SIDE PIPES CORNER FILLER'S BRAC
2	2" PLUMBING
2	2" PLUMBING
2	2" PLUMBING
2	2" PLUMBING

FILE NUMBER: 230514607	NON DIVING	POOL CONFORMANCE: THIS POOL CONFORMS TO CURRENT APPLICABLE CODES AND REGULATIONS.	DEALER NAME: Surfside Pool Company
Perimeter: 107'-1 3/4"			CUSTOMER SIGNATURE REQUIRED: DATE
Surface Area: 647.79 SQ FT			
Volume: 21,479 gal.			

RECHARGE DETAIL

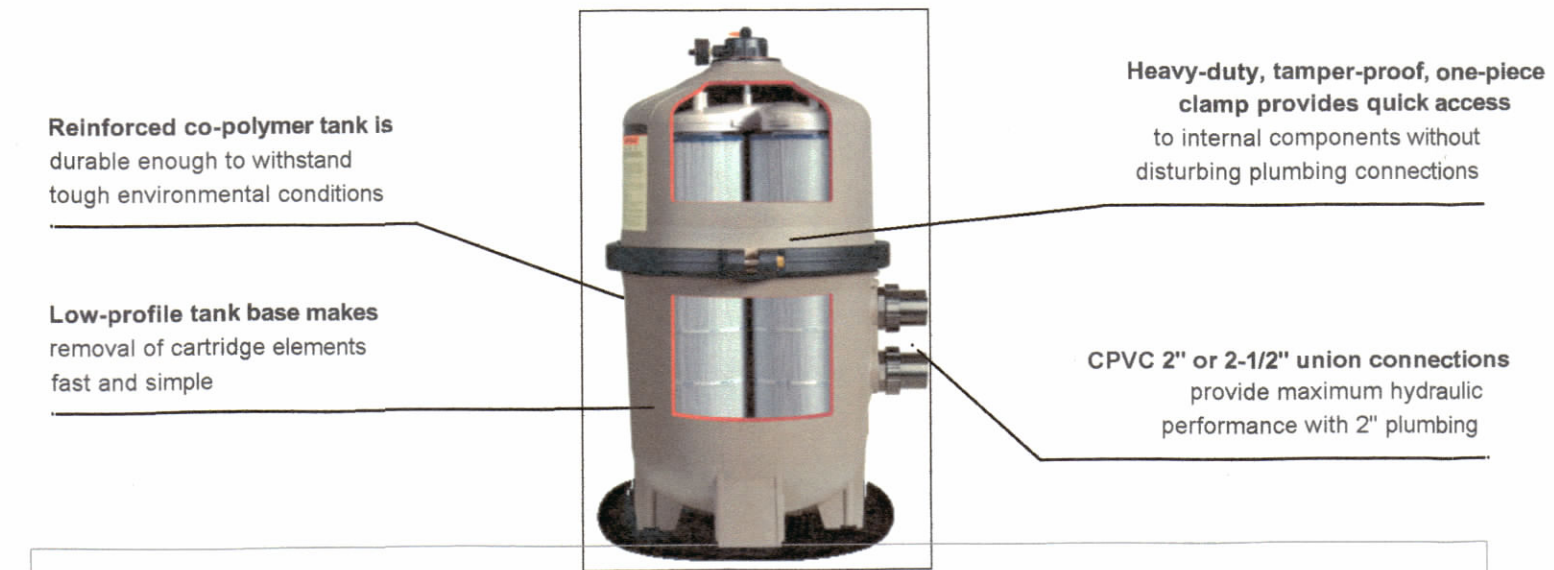
* CALCULATED FOR 3INCH STORM. CONFIRMED WITH FRANKLIN TOWN ENGINEER

CONSTRUCTION SEQUENCE

- DURING THIS SEQUENCE ALL EROSION CONTROL BARRIERS SHALL BE INSPECTED AND MAINTAINED. ALL DISTURBED AREAS SHALL BE STABILIZED BY WOOD CHIPS, MULCH, SEEDING OR SODDING AS SOON AS POSSIBLE AFTER GRADING IS COMPLETE. ALL EROSION CONTROL BARRIERS SHALL BE REMOVED UPON COMPLETION OF FINAL SLOPE STABILIZATION.
1. ALL ELEVATIONS REFER TO BM - 101.00 (SEE PLAN)
 2. DEMARK LIMITS OF WORK; INSTALL EROSION CONTROL BARRIERS; CONTACT CONSERVATION COMMISSION FOR INSPECTION
 3. CLEAR AND GRUB SITE; STRIP AND STOCKPILE LOAM WITHIN THE LIMIT OF WORK
 4. EXCAVATE FOR POOL; INSTALL POOL WALLS AND CONCRETE COLLAR; PLUMBING AND ELECTRICAL GRADE AND BACKFILL AREA AROUND POOL FOR SURROUNDING PATIO; INSTALL LINER
 5. FINAL GRADING OF AREA
 6. INSTALLATION OF POOL FENCING
 7. COMPLETE FINAL LANDSCAPING AND LOAM AND SEED ALL AREAS DISTURBED BY CONSTRUCTION ACTIVITIES
 8. CONTACT DESIGN ENGINEER TO CONDUCT AS-BUILT SITE INSPECTION
 9. FOLLOWING COMPLETION OF CONSTRUCTION, AFTER VEGETATION HAS BEEN ESTABLISHED, SUBMIT MATERIALS REQUIRED FOR CERTIFICATE OF COMPLIANCE REQUEST TO CONSERVATION COMMISSION

MAXIMUM FLOW WITH MINIMAL MAINTENANCE.

Featuring an assembly of reusable polyester cartridge elements with precision-engineered cores, SwimClear multi-element cartridge filters provide heavy-duty dirt-holding capacity and extra-long filter cycles. In fact, as the industry's largest filter, the C7030 model offers the longest time possible between cleanings. SwimClear filters' top manifold configuration boasts industry-leading hydraulic performance, facilitating maximum flow through all cartridge elements for superior water clarity and increased energy savings.



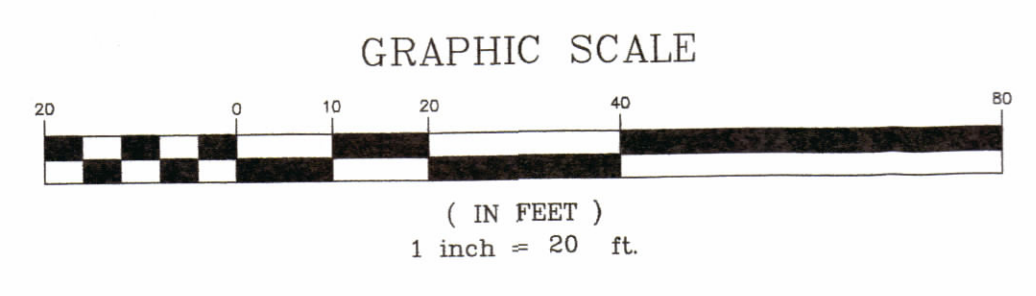
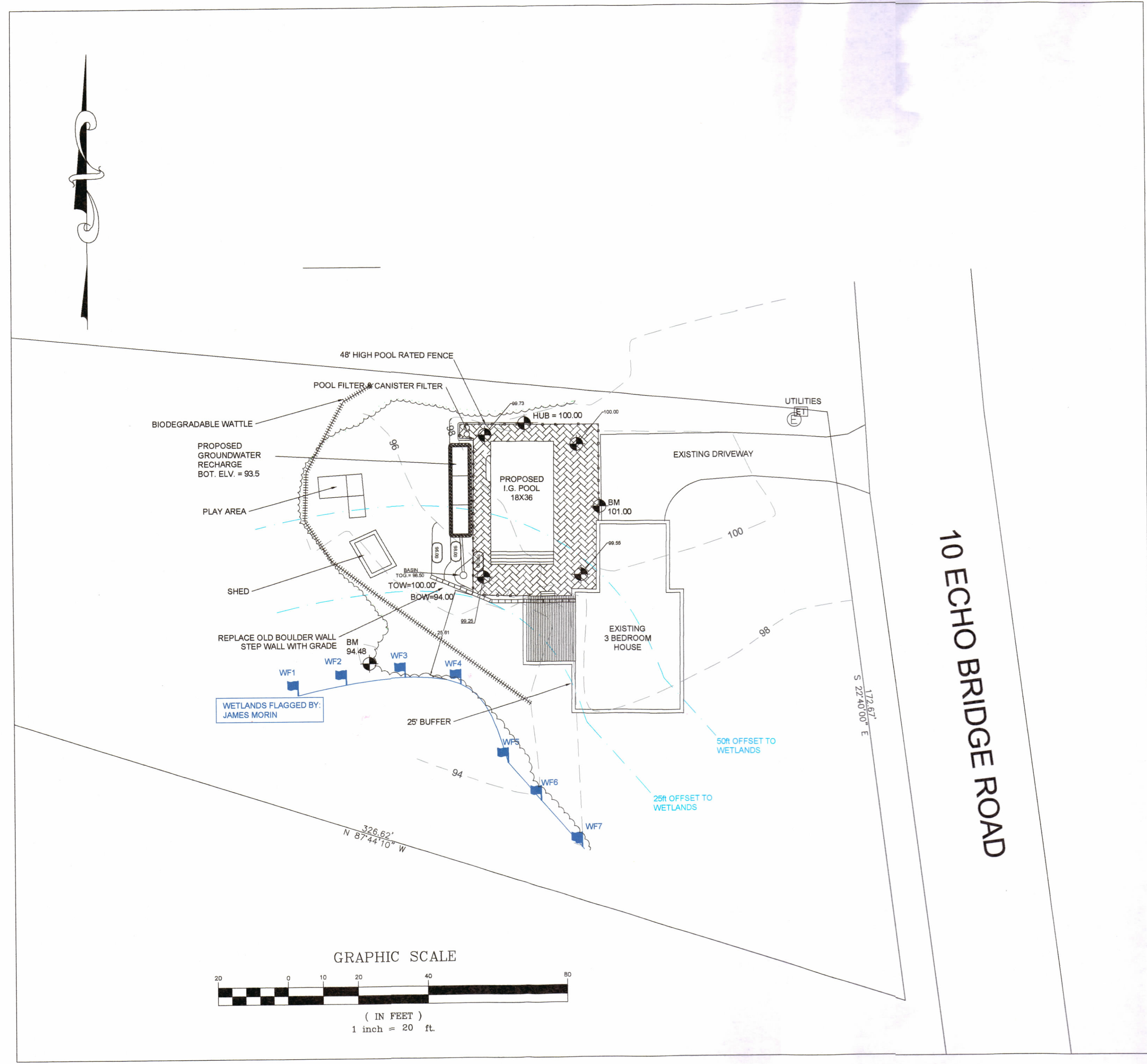
SPECIFICATIONS	
Filter Type	Cartridge elements: 225, 325, 425, and 525 R2 (4 cartridge elements), 700 R2 (8 cartridge elements)
Filter Tank	High-strength, injection-molded durable glass reinforced copolymer
Filter Element	Reinforced polyester
Performance Range	84 to 150 GPM, 318 to 568 LPM
Dimensions	C2030 - 24" W x 32 1/2" H (58 cm x 81 cm) C3030 - 24" W x 34 1/2" H (58 cm x 87 cm) C4030 - 24" W x 40 1/2" H (58 cm x 102 cm) C5030 - 24" W x 46 1/2" H (58 cm x 117 cm) C7030 - 24" W x 52 1/2" H (58 cm x 134 cm)

FILTER PERFORMANCE DATA				
MODEL NUMBER	EFFECTIVE FILTRATION AREA	DESIGN FLOW RATE*	TURNOVER 8 HOURS	TURNOVER 10 HOURS
C2030	225 R2 / 20.9 m ²	84 GPM* / 318 LPM	40,320 gal / 153 kl	50,400 gal / 191 kl
C3030	325 R2 / 30.2 m ²	122 GPM* / 462 LPM	58,560 gal / 222 kl	73,200 gal / 277 kl
C4030	425 R2 / 39.5 m ²	150 GPM** / 568 LPM	72,000 gal / 273 kl	90,000 gal / 341 kl
C5030	525 R2 / 48.8 m ²	150 GPM** / 568 LPM	72,000 gal / 273 kl	90,000 gal / 341 kl
C7030	700 R2 / 65.0 m ²	150 GPM** / 568 LPM	72,000 gal / 273 kl	90,000 gal / 341 kl

*Based on NSF recommended safe for commercial use at 375 GPM/ft.
 **Determined by pump size and piping system hydraulics; 2" piping is recommended for flow rates equal to or greater than 90 GPM (341 LPM). Hayward doesn't recommend flow rates above 150 GPM.

hayward.com » 1-888-HAYWARD

Pumps » Filters » Heating » Cleaners » Sanitization » Automation » Lighting » Water Features » White Goods



NOTICE OF INTENT PLAN (PROPOSED POOL)

CLIENT: CHRISTINE M. ALLEN
 10 ECHO BRIDGE ROAD
 FRANKLIN, MA 02038

PHONE #: _____
CELL: _____
WORK: _____
EMAIL: _____

LOCATION: 10 ECHO BRIDGE ROAD
 FRANKLIN, MA 02038

ASSESSOR MAP # 252
ASSESSOR LOT # 75

DATE: 05/12/2023 **SCALE:** 1" = 20' **DESIGNED BY:** JJM
DRAWING NO.: 10 ECHO BRIDGE **FIELD BOOK:** 14 **DRAWN BY:** JJM

#	DATE	REVISION DESCRIPTION	DRAWN	CHECK

NorthEast Classic Engineering
 58 OAK TRAIL
 BOLTON, MA 01740
 774-696-2246
 NECLASSICENGINEERING.COM
 JIM@NECLASSICENGINEERING.COM

HAYWARD

James A. Herrick
 Registered Professional Engineer
 DATE: 05-23-2023
 JAMES HERRICK, MA PE 41195