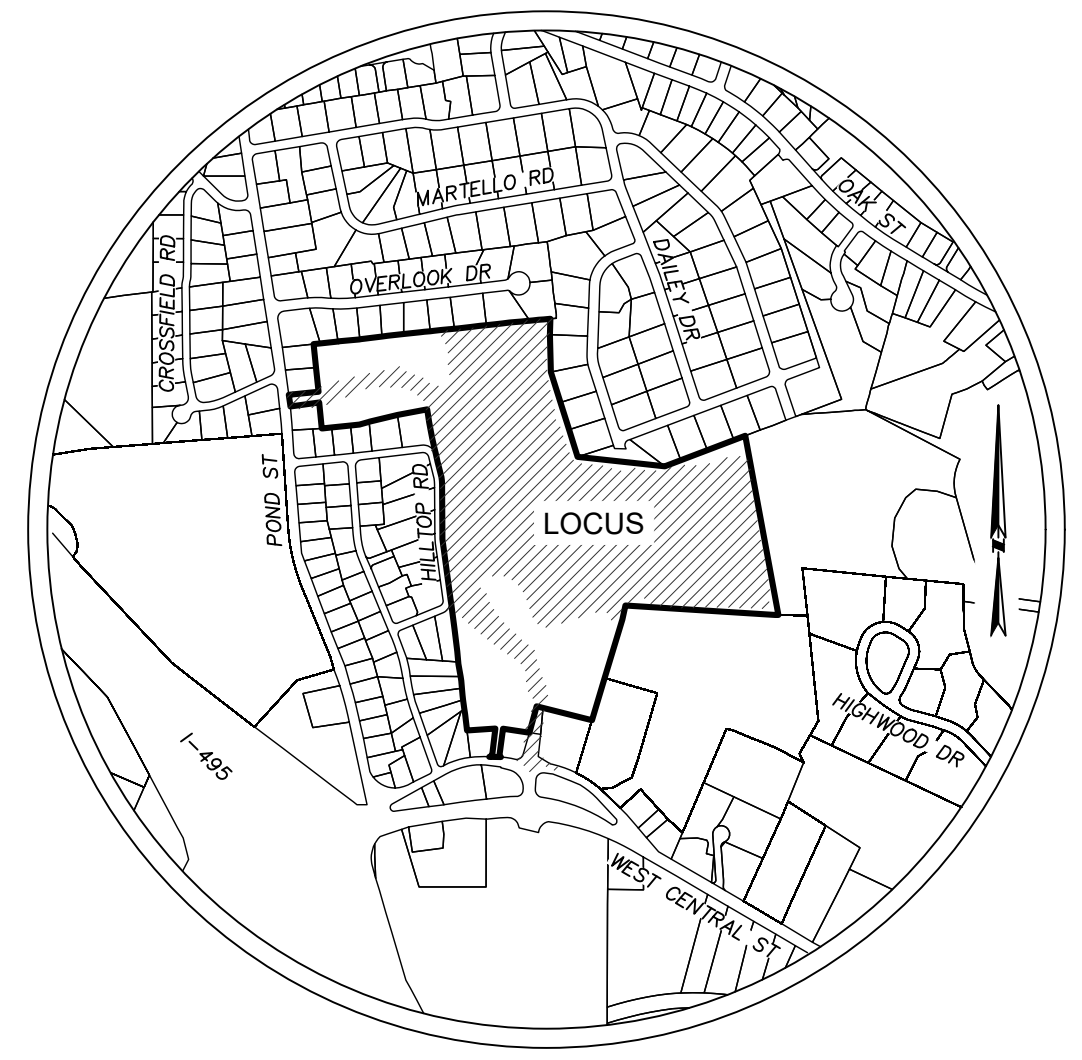


MASSACHUSETTS STATE PLANE  
COORDINATE SYSTEM (NAD83)

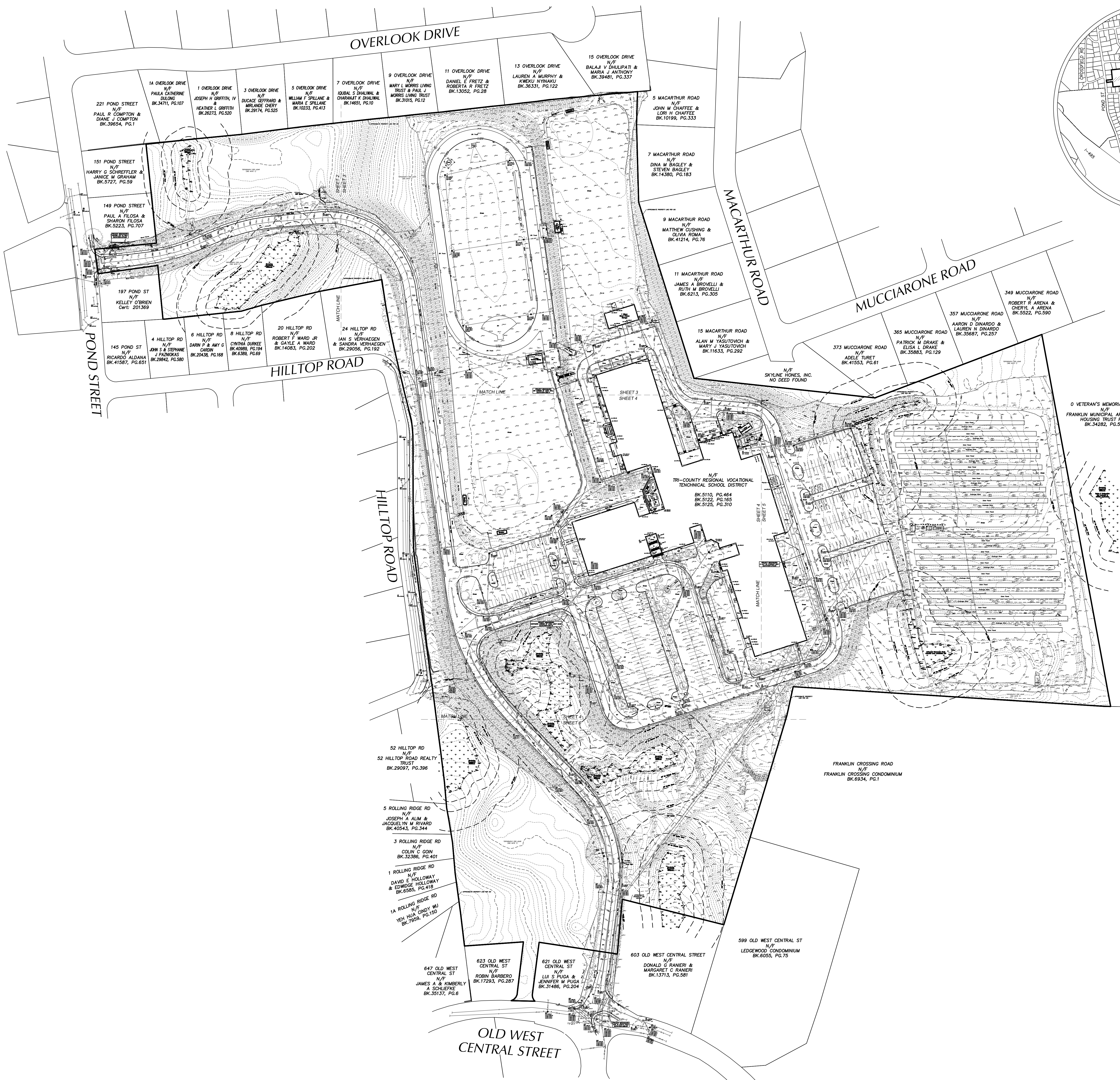
samioles

Samioles Consultants Inc.  
Civil Engineers • Land Surveyors  
20 A Street  
Franklin, MA 01701  
T 508.877.6888  
F 508.877.8349  
www.samioles.com

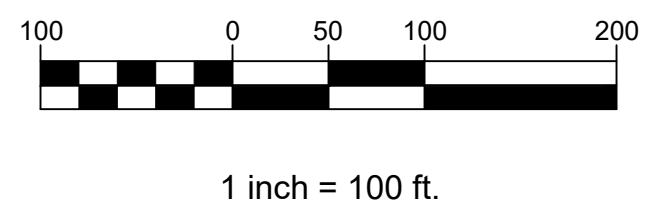


LOCUS MAP  
not to scale

- NOTES:
- THIS PLAN IS REFERENCED HORIZONTALLY TO THE MASSACHUSETTS STATE PLANE COORDINATE SYSTEM NORTH AMERICAN DATUM OF 1983 AND VERTICALLY TO THE NORTH AMERICAN VERTICAL DATUM OF 1988 BY RTK GPS OBSERVATIONS TAKEN ON DECEMBER 8, 2022. SEE PLAN FOR PROJECT BENCHMARK LOCATION.
  - THIS PLAN IS THE RESULT OF AN INSTRUMENT SURVEY PERFORMED IN NOVEMBER, DECEMBER OF 2022, JANUARY, APRIL OF 2023 & FEBRUARY OF 2024.
  - UNDERGROUND UTILITIES ARE BASED UPON AN ACTUAL FIELD SURVEY AND INFORMATION OF RECORD. IT IS NOT WARRANTED THAT THEY ARE EXACTLY LOCATED, NOR THAT ALL UNDERGROUND CONDUITS OR OTHER STRUCTURES ARE SHOWN ON THIS PLAN. CONTACT DISSAFE 811 PRIOR TO ANY EXCAVATION.
  - THE SUBJECT LAND AS SHOWN IS NOT LOCATED WITHIN A SPECIAL FLOOD HAZARD AREA, OR OTHER FLOOD AREA AS SHOWN ON FEMA NATIONAL FLOOD INSURANCE PROGRAM (NFIP) FLOOD INSURANCE RATE MAP (FIRM) NUMBER 25020C0306E, HAVING AN EFFECTIVE DATE OF JULY 17, 2012.
  - THIS PLAN IS NOT INTENDED TO REPRESENT A BOUNDARY SURVEY. PROPERTY LINES SHOWN ARE APPROXIMATE ONLY. EASEMENTS, IF ANY, ARE NOT SHOWN.
  - TOPOGRAPHY OUTSIDE THE GROUND SURVEY LIMITS (GSL) HAS BEEN GENERATED FROM LIDAR DATA COMPILED FROM INFORMATION AT COAST.NGA.GOV. OTHER SITE FEATURES MAY EXIST. ANY USER SHOULD DETERMINE THE SUITABILITY FOR ITS INTENDED USE AND ASSUME ALL RISK AND LIABILITY IN CONNECTION THEREWITH.
  - THE LIMIT OF BORDERING VEGETATED WETLANDS WERE FIELD DELINEATED BY ENVIRONMENTAL CONSULTING & RESTORATION, LLC ON MARCH 23, 2023 & FEBRUARY 1, 2024.



- LEGEND
- CATCHBASIN
  - DRAIN MANHOLE
  - AREA DRAIN
  - SEWER MANHOLE
  - CLEAN OUT
  - VEN
  - HYDRANT
  - WATER GATE
  - WATER SERVICE
  - UNKNOWN MANHOLE
  - POST INDICATOR VALVE
  - GAS METER
  - GAS GATE
  - ELECTRIC METER
  - ELECTRIC BOX
  - UTILITY POLE
  - TRANSFORMER
  - DUY WIRE
  - LIGHT POLE
  - HANDHOLE
  - SIGN
  - POST
  - BOLLARD
  - WETLAND FLAG
  - DECIDUOUS TREE
  - CONIFEROUS TREE
  - SHRUB
  - STUMP
  - FLAGPOLE
  - HANDICAP PARKING SPACE
  - FLARED END SECTION
  - DRAIN LINE
  - SEWER LINE
  - WATER LINE
  - GAS LINE
  - ELECTRIC LINE
  - COMMUNICATIONS LINE
  - OH/W
  - INDEX CONTOUR
  - INTERMEDIATE CONTOUR
  - GROUND SURVEY LIMITS
  - DOOR SILL ELEVATION
  - ff=
  - RECORD
  - BITUMINOUS
  - EDGE OF CONCRETE
  - EDGE OF GRAVEL
  - EDGE OF STONE
  - VCC
  - VGC
  - SAC
  - OH
  - HR
  - DI
  - VC
  - NVP
  - UTO
  - CMP
  - RCP
  - PVC
  - TP
  - CLF
  - MGR
  - MBW
  - RTW
  - SWL
  - SYL
  - LA



TRI-COUNTY REGIONAL VOCATIONAL  
TECHNICAL HIGH SCHOOL  
147 POND STREET FRANKLIN, MA



D.F. DANIEL F. FLEMING - P.L.S. No. 55476  
REGISTERED PROFESSIONAL  
LAND SURVEYOR FOR  
SAMIOLES CONSULTANTS, INC.

REVISION	DATE	DESCRIPTION
1	3/18/2024	Wetland Update

TOPOGRAPHIC  
PLAN OF LAND

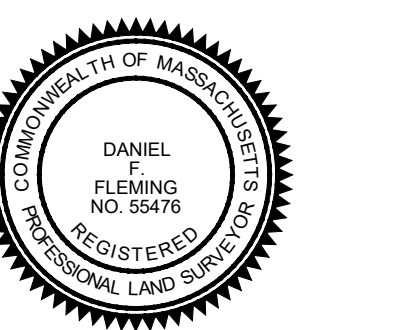
JOB # 52033.00	T-1
DATE: 5/3/2023	
SCALE: 1"=100'	
DRAWN BY: AJD	
APPROVED BY: DJF	SHEET 1 OF 6

MASSACHUSETTS STATE PLANE  
COORDINATE SYSTEM (NAD83)



Samioles Consultants Inc.  
Civil Engineers - Land Surveyors  
20 S Street  
Frammingham, MA 01701  
T 508.877.6888  
F 508.877.8349  
www.samioles.com

TRI-COUNTY REGIONAL VOCATIONAL  
TECHNICAL HIGH SCHOOL  
147 POND STREET FRANKLIN, MA

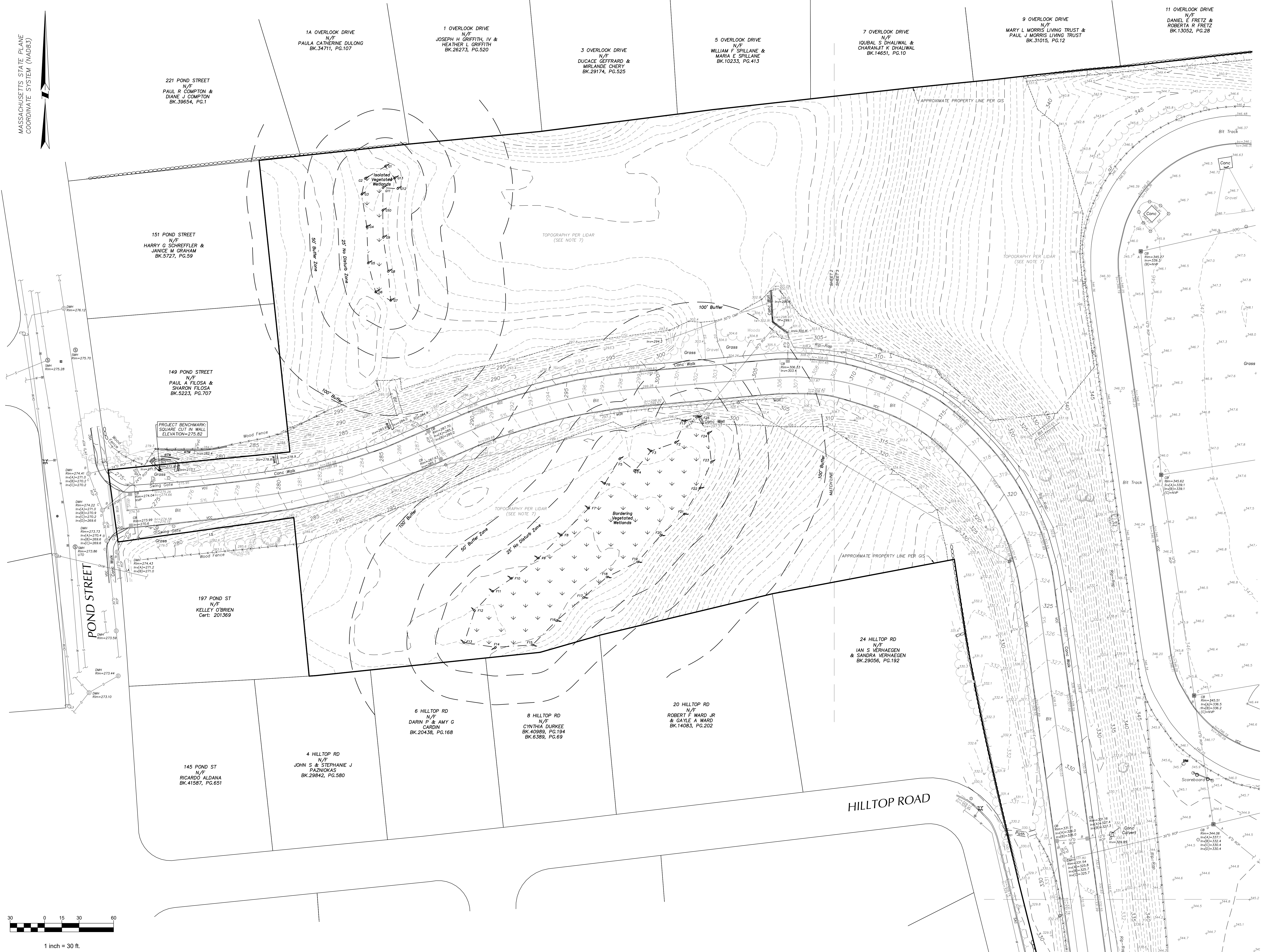


D.F.F.  
DANIEL F. FLEMING - P.L.S. No. 55476  
REGISTERED PROFESSIONAL  
LAND SURVEYOR FOR  
SAMIOLES CONSULTANTS, INC.

REVISION	DATE	DESCRIPTION
1	3/18/2024	Wetland Update

TOPOGRAPHIC  
PLAN OF LAND

JOB # 52033.00  
DATE: 5/3/2023  
SCALE: 1"=30'  
DRAWN BY: AJD  
APPROVED BY: DFF  
T-2  
SHEET 2 OF 6



MASSACHUSETTS STATE PLANE  
COORDINATE SYSTEM (NAD83)

7 OVERLOOK DRIVE  
N/F  
IOUBAL S DHALIWAL &  
CHARANJIT K DHALIWAL  
BK.14651, PG.10

9 OVERLOOK DRIVE  
N/F  
MARY L MORRIS LIVING TRUST &  
PAUL J MORRIS LIVING TRUST  
BK.31015, PG.12

11 OVERLOOK DRIVE  
N/F  
DANIEL E FRETZ &  
ROBERTA R FRETZ  
BK.13052, PG.26

13 OVERLOOK DRIVE  
N/F  
LAUREN A MURPHY &  
KWEKU NYIRAKU  
BK.36331, PG.122

15 OVERLOOK DRIVE  
N/F  
BALAJ V DHULIPATI &  
MARIA J ANTHONY  
BK.39481, PG.337

5 MACARTHUR ROAD  
N/F  
JOHN M CHAFFEE &  
LORI H CHAFFEE  
BK.10199, PG.333

7 MACARTHUR ROAD  
N/F  
DINA M BAGLEY &  
STEVEN BAGLEY  
BK.14380, PG.183

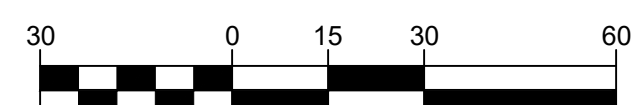
9 MACARTHUR ROAD  
N/F  
MATTHEW CUSHING &  
OLIVIA ROMA  
BK.41214, PG.76

11 MACARTHUR ROAD  
N/F  
JAMES A BROVELLI &  
RUTH M BROVELLI  
BK.6213, PG.305

15 MACARTHUR ROAD  
N/F  
ALAN M YASUTOVICH &  
MARY J YASUTOVICH  
BK.11633, PG.292

24 HILLTOP RD  
N/F  
IAN S VERHAEGEN  
& SANDRA VERHAEGEN  
BK.29056, PG.192

HILLTOP ROAD



1 inch = 30 ft.



PROJECT BENCHMARK:  
SW CORNER OF CONC WALL  
ELEVATION=536.14

samioles

Samioles Consultants Inc.  
Civil Engineers • Land Surveyors  
30 A Street  
Framingham, MA 01701  
T 508.877.6688  
F 508.877.8349  
www.samioles.com

TRI-COUNTY REGIONAL VOCATIONAL  
TECHNICAL HIGH SCHOOL  
147 POND STREET FRANKLIN, MA



DFF  
DANIEL F. FLEMING - P.L.S. No. 55476  
REGISTERED PROFESSIONAL  
LAND SURVEYOR FOR  
SAMIOLES CONSULTANTS, INC.

REVISION	DATE	DESCRIPTION
1	3/18/2024	Wetland Update

TOPOGRAPHIC  
PLAN OF LAND

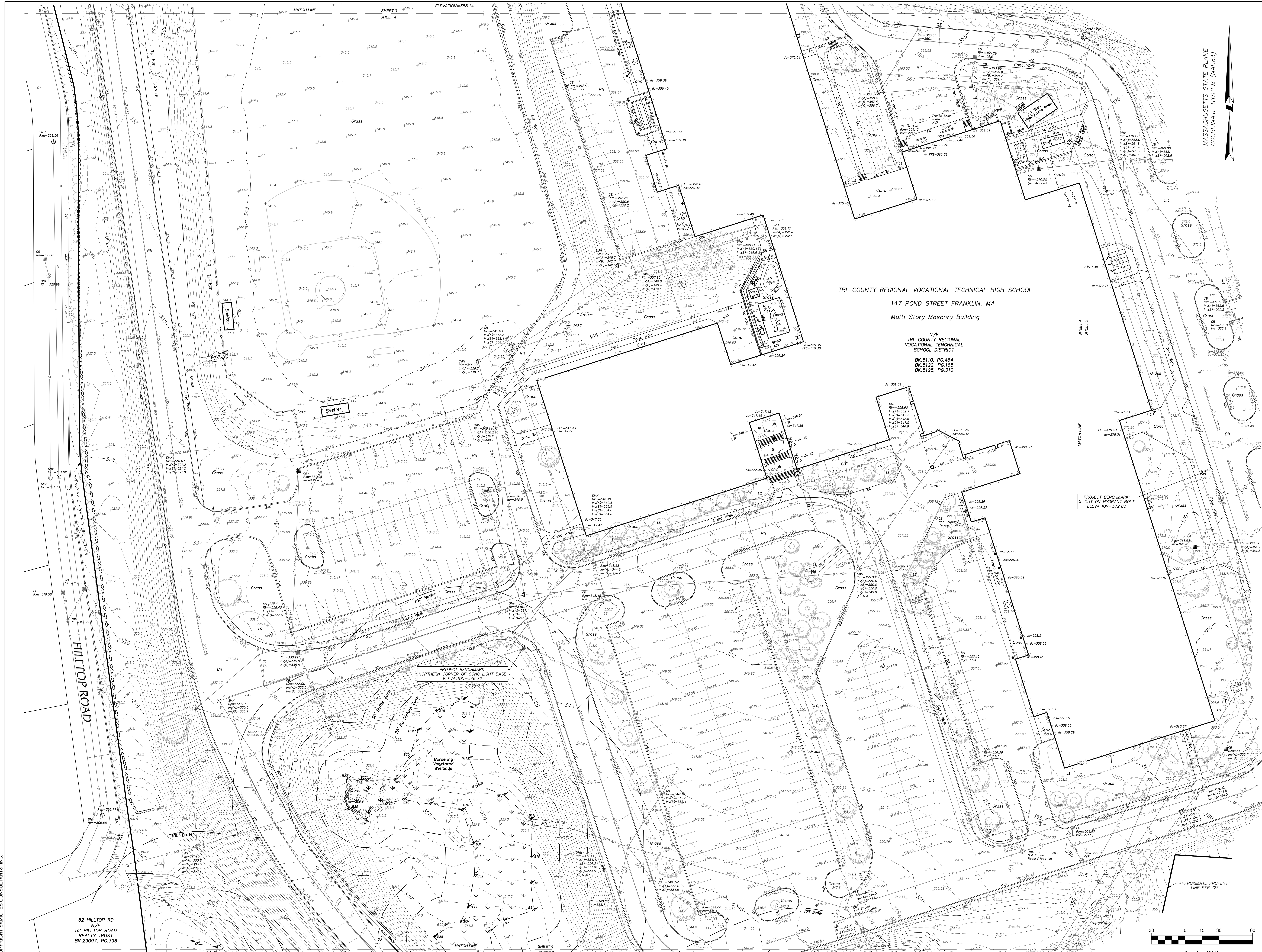
JOB # 52033.00  
DATE: 5/3/2023  
SCALE: 1"=30'  
DRAWN BY: AJD  
APPROVED BY: DFF

T-3

SHEET 3 OF 6

FILE: 52033 TRI COUNTY SCHOOL FRANKLIN TOPO 2024-3-18.DWG

MASSACHUSETTS STATE PLANE  
COORDINATE SYSTEM (NAD83)



TRI-COUNTY REGIONAL VOCATIONAL TECHNICAL HIGH SCHOOL  
147 POND STREET FRANKLIN, MA  
Multi Story Masonry Building  
N/F  
TRI-COUNTY REGIONAL VOCATIONAL TECHNICAL SCHOOL DISTRICT  
BK.5110, PG.464  
BK.5122, PG.165  
BK.5125, PG.310

TRI-COUNTY REGIONAL VOCATIONAL  
TECHNICAL HIGH SCHOOL  
147 POND STREET FRANKLIN, MA

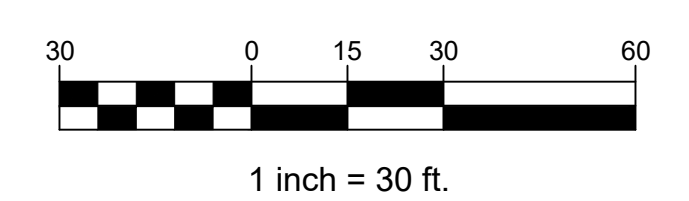


D.F. Fleming  
DANIEL F. FLEMING - P.L.S. No. 55476  
REGISTERED PROFESSIONAL  
LAND SURVEYOR FOR  
SAMIOLES CONSULTANTS, INC.

REVISION	DATE	DESCRIPTION
1	3/18/2024	Wetland Update

TOPOGRAPHIC  
PLAN OF LAND

JOB # 52033.00  
DATE: 5/3/2023  
SCALE: 1"=30'  
DRAWN BY: AJD  
APPROVED BY: DFF  
T-4  
SHEET 4 OF 6



MASSACHUSETTS STATE PLANE  
COORDINATE SYSTEM (NAD83)



Samioles Consultants Inc.  
Civil Engineers + Land Surveyors  
20 A Street  
Franklin, MA 01701  
T 508.877.6888  
F 508.877.8349  
www.samioles.com

0 VETERAN'S MEMORIAL DRIVE  
FRANKLIN MUNICIPAL AFFORDABLE  
HOUSING TRUST FUND  
BK.34282, PG.520

TRI-COUNTY REGIONAL VOCATIONAL  
TECHNICAL HIGH SCHOOL  
147 POND STREET FRANKLIN, MA  
Multi Story Masonry Building

PROJECT BENCHMARK:  
X-CUT ON MIDWINTER BOLT  
ELEVATION=372.85

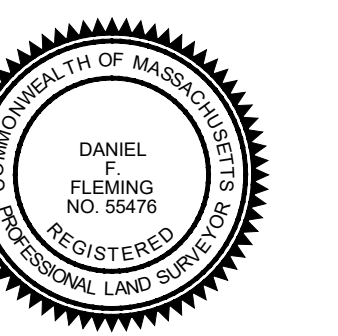


1 inch = 30 ft.

FRANKLIN CROSSING ROAD  
FRANKLIN CROSSING CONDOMINIUM  
BK.6934, PG.1

TOPOGRAPHY PER LIDAR  
(SEE NOTE 7)

TRI-COUNTY REGIONAL VOCATIONAL  
TECHNICAL HIGH SCHOOL  
147 POND STREET FRANKLIN, MA



D.F. Fleming  
DANIEL F. FLEMING - P.L.S. No. 55476  
REGISTERED PROFESSIONAL  
LAND SURVEYOR FOR  
SAMIOLES CONSULTANTS, INC.

REVISION	DATE	DESCRIPTION
1	3/18/2024	Wetland Update

TOPOGRAPHIC  
PLAN OF LAND

JOB # 52033.00  
DATE: 5/3/2023  
SCALE: 1"=30'  
DRAWN BY: AJD  
APPROVED BY: DFF  
T-5  
SHEET 5 OF 6

FILE: 52033 TRI COUNTY SCHOOL FRANKLIN TOPO 2024-3-18.DWG

© COPYRIGHT SAMIOLES CONSULTANTS, INC.

T:\PROJECTS\2022\52033.00 TRI-COUNTY REGIONAL TECHNICAL HS IN FRANKLIN, MA SURVEY\DWG\2024-3-18 WETLANDS REVISED PLOTTING\2024-3-18 TRI-COUNTY SCHOOL FRANKLIN TOPO 2024-3-18.DWG

MASSACHUSETTS STATE PLANE  
COORDINATE SYSTEM (NAD83)

52 HILLTOP RD  
N/F  
52 HILLTOP ROAD  
REALTY TRUST  
BK.29097, PG.396

5 ROLLING RIDGE RD  
N/F  
JOSEPH A ALIM &  
JACQUELYN M RIVARD  
BK.40543, PG.344

3 ROLLING RIDGE RD  
N/F  
COLIN C GOIN  
BK.32386, PG.401

1 ROLLING RIDGE RD  
N/F  
DAVID E HOLLOWAY  
& EDWIGE HOLLOWAY  
BK.6585, PG.418

1A ROLLING RIDGE RD  
N/F  
YEH HUA CINDY WU  
BK.7959, PG.150

647 OLD WEST CENTRAL ST  
N/F  
JAMES A & KIMBERLY A  
SCHLIEFKE  
BK.35137, PG.6

623 OLD WEST CENTRAL ST  
N/F  
ROBIN BARBERO  
BK.17293, PG.287

621 OLD WEST CENTRAL ST  
N/F  
LUI S PUGA &  
JENNIFER M PUGA  
BK.31486, PG.204

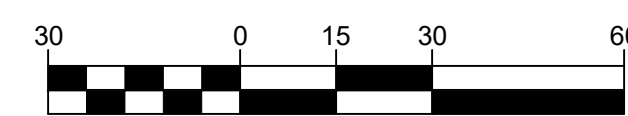
603 OLD WEST CENTRAL STREET  
N/F  
DONALD G RANIERI &  
MARGARET C RANIERI  
BK.13713, PG.581

FRANKLIN CROSSING ROAD  
N/F  
FRANKLIN CROSSING CONDOMINIUM  
BK.6934, PG.1

599 OLD WEST CENTRAL ST  
N/F  
LEDEWOOD CONDOMINIUM  
BK.6055, PG.75

OLD WEST  
CENTRAL STREET

PROJECT BENCHMARK:  
NAIL IN UTILITY POLE  
ELEVATION=288.02

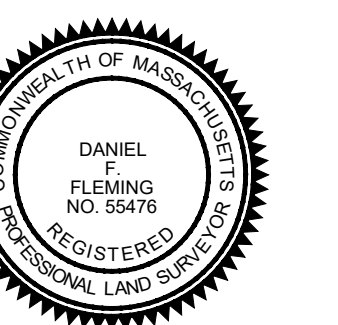


1 inch = 30 ft.

samioles

Samioles Consultants Inc.  
Civil Engineers - Land Surveyors  
20 A Street  
Frammingham, MA 01701  
T 508.877.6888  
F 508.877.8349  
www.samioles.com

TRI-COUNTY REGIONAL VOCATIONAL  
TECHNICAL HIGH SCHOOL  
147 POND STREET FRANKLIN, MA



D.F. Fleming  
DANIEL F. FLEMING - P.L.S. No. 55476  
REGISTERED PROFESSIONAL  
LAND SURVEYOR FOR  
SAMIOLES CONSULTANTS, INC.

REVISION	DATE	DESCRIPTION
1	3/18/2024	Wetland Update

TOPOGRAPHIC  
PLAN OF LAND

JOB # 52033.00  
DATE: 5/3/2023  
SCALE: 1"=30'  
DRAWN BY: AJD  
APPROVED BY: DFF  
T-6  
SHEET 6 OF 6

FILE: S2033 TRI COUNTY SCHOOL FRANKLIN TOPO 2024 3-18.DWG