

LEGAL NOTES

UTILITIES ARE PLOTTED AS A COMPILATION OF RECORD DRAWINGS, MARKINGS AND OTHER OBSERVED PRESENCE TO THE BEST OF A VIEW OF THE UNDERGROUND UTILITIES FIELD. SHOULD BE CONSIDERED APPROXIMATE. PRIOR TO ANY EXCAVATION, THE EXACT LOCATION OF UNDERGROUND FEATURES CANNOT BE ACCURATELY DETERMINED COMPLETELY AND RELIABLY DEPICTED. ADDITIONAL UTILITIES, NOT EVIDENCED BY RECORD DRAWINGS OR OBSERVED PHYSICAL EVIDENCE, MAY EXIST. CONTRACTORS (IN ACCORDANCE WITH MASS. REG. CHAPTER 82 SECTION 4D AS AMENDED) MUST CONTACT ALL UTILITY COMPANIES BEFORE EXCAVATING AND DRILLING AND CALL DIGSAFE AT 1(888)DIG-SAFE(7233).

CONSTRUCTION ON THIS LAND IS SUBJECT TO ANY EASEMENTS, RIGHTS-OF-WAY, RESTRICTIONS, RESERVATIONS, OR OTHER LIMITATIONS WHICH MAY BE REVEALED BY AN EXAMINATION OF THE TITLE.

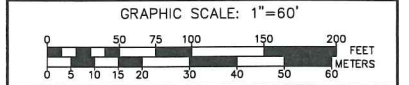
OWNER

FRANKLIN MUNICIPAL AFFORDABLE HOUSING TRUST FUND  
355 EAST CENTRAL STREET  
FRANKLIN, MA 02038  
MAP 259 PARCEL 007-002  
BOOK 34282 PAGE 520  
PLAN BK. 585 PLAN 24 OF 2008

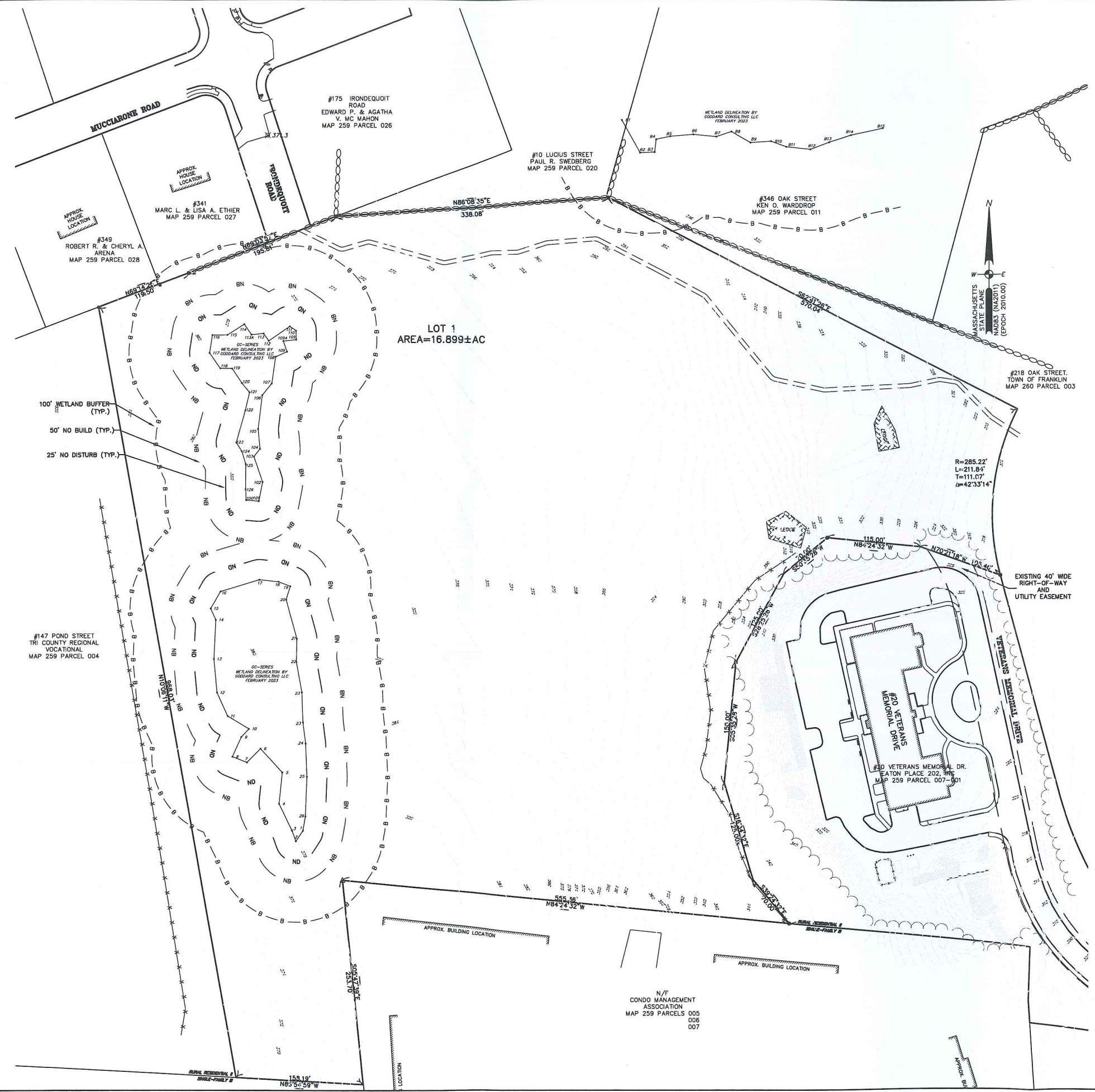
RESOURCE AREA  
PLOT PLAN  
ASSESSOR MAP 259  
PARCEL 007-002  
FRANKLIN  
MASSACHUSETTS

MARCH 10, 2023

DATE	REVISION DESCRIPTION



**Guerriere & Halnon, Inc.**  
ENGINEERING & LAND SURVEYING  
55 WEST CENTRAL ST. PH. (508) 528-3221  
FRANKLIN, MA 02038 FX. (508) 528-7921  
www.gandhengineering.com



C:\CDD\Franklin\F4598\DWG\F4598-RESOURCE AREA PLAN.dwg, 6/8/2023 3:23:48 PM, [REC]