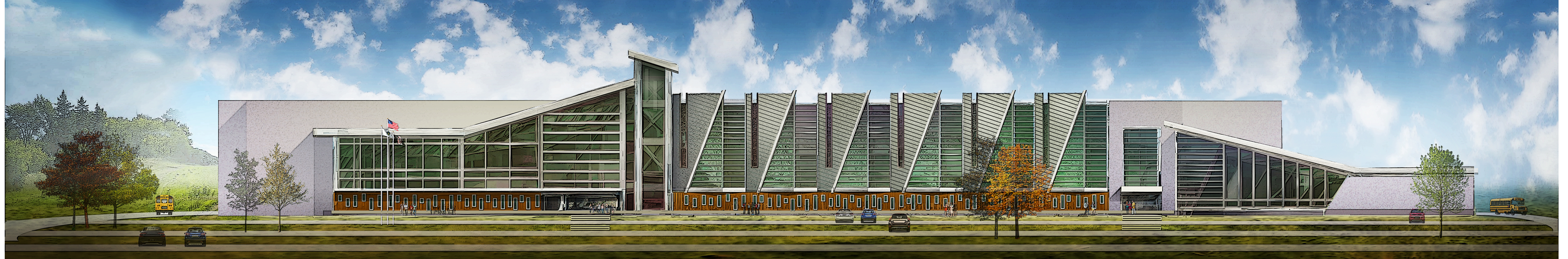


Tri-County Regional Vocational Technical High School

147 Pond St, Franklin, MA 02038

DRA PROJECT NO. 22001.00



COPYRIGHT 2023, DRUMMEY ROSANE ANDERSON, INC.

TRI-COUNTY REGIONAL VOCATIONAL TECHNICAL HIGH SCHOOL BUILDING COMMITTEE

Brian Mushnick
Karen Maguire
Dana Walsh
Dan Haynes
Michael Procaccini
Jonathon Dowse
Brendan Bowen
Stanley Widak Jr.
Harry Takesian
Jane Hardin
Bob Foley
Lloyd "Gus" Brown

MASSACHUSETTS SCHOOL BUILDING AUTHORITY

40 Broad Street, Suite 500
Boston, MA 02109

TRI-COUNTY REGIONAL VOCATIONAL TECHNICAL HIGH SCHOOL DISTRICT

Greg St. Lawrence, School Committee Chair
Dr. Karen M. Maguire, Superintendent-Director
Dana Walsh, Principal

DISTRICT COMMUNITIES

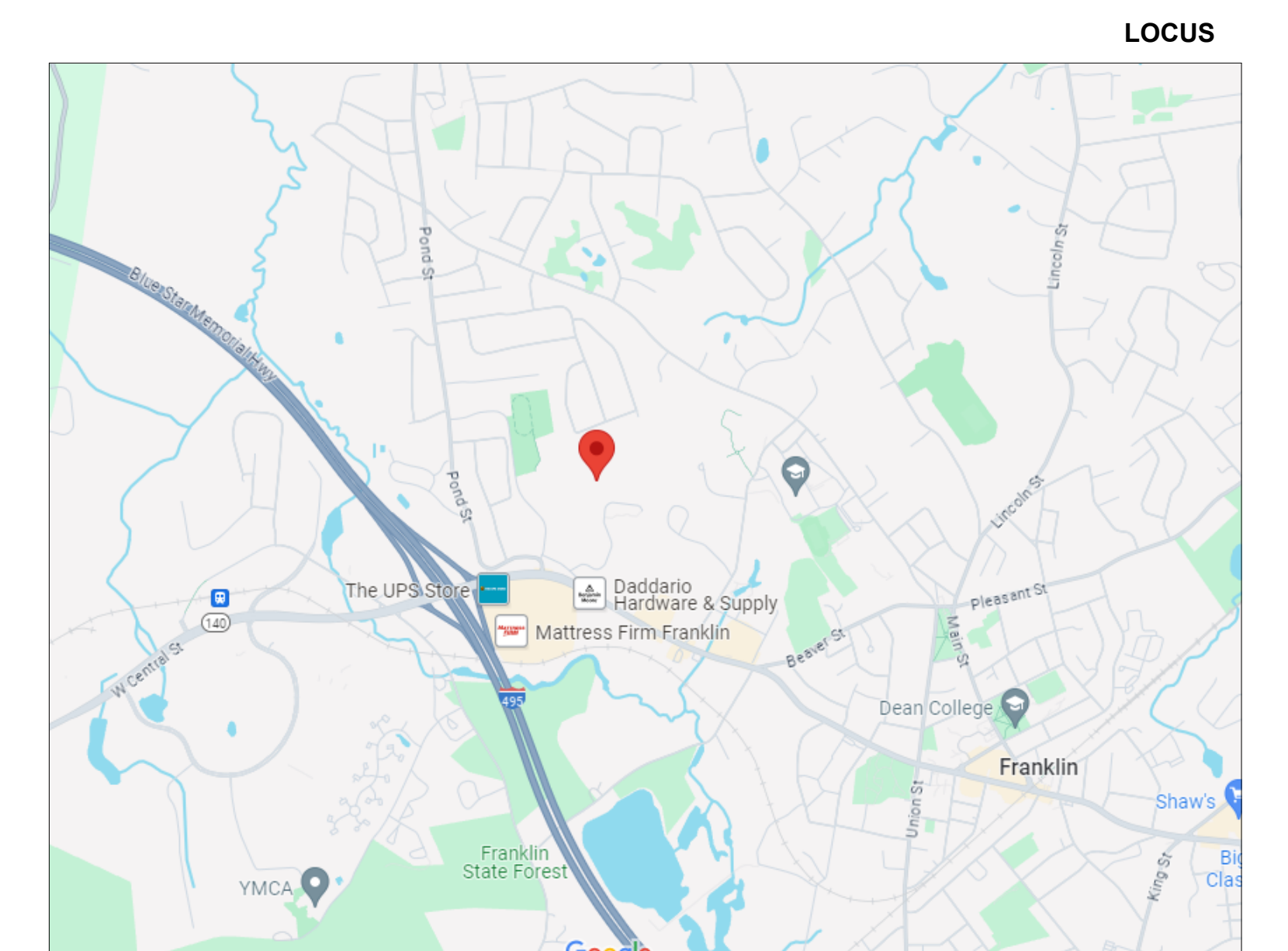
Franklin, Medfield, Medway, Millis, Norfolk, North Attleboro, Sherborn, Walpole,
Plainville, Seekonk and Wrentham

OWNERS PROJECT MANAGER

DORE+WHITTIER Management Partners, LLC
212 Battery Street, Suite 1
Burlington, VT 05401

CONSTRUCTION MANAGER AT RISK

Consigli Construction Co., Inc.
72 Sumner Street
Milford, MA 473-2580



DRA PROJECT NO. 22001.00

Tri-County Regional Vocational Technical High School

DRA

ARCHITECT

DrummeY Rosane Anderson
260 Charles Street, Studio 300
Waltham, MA 02453
t: 617.964.1700

LANDSCAPE ARCHITECT

Warner Larson
130 West Broadway
Boston, MA 02108
t: 617.464.1440

CIVIL ENGINEER

Samiotes Consultants
20 A Street
Framingham, MA 01701
t: 508.877.6688

STRUCTURAL ENGINEER

Engineers Design Group
350 Main Street, Floor 2
Malden, MA 02148
t: 781.396.9007

PLUMBING AND FIRE PROTECTION

C.A. Crowley Engineering
645 County Street
Taunton, MA 02780
t: 508.884.5094

MECHANICAL AND ELECTRICAL

Griffith and Vary
12 Kendrick Road, Unit 1
Wareham, MA 02571
t: 508.295.0050

TECHNOLOGY CONSULTANT

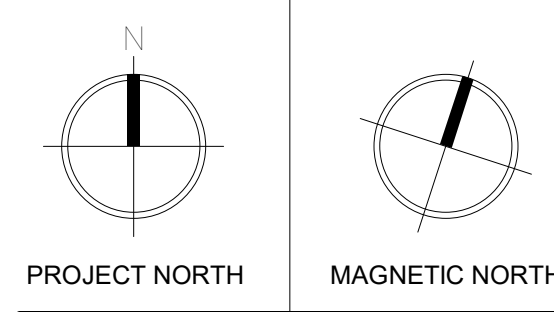
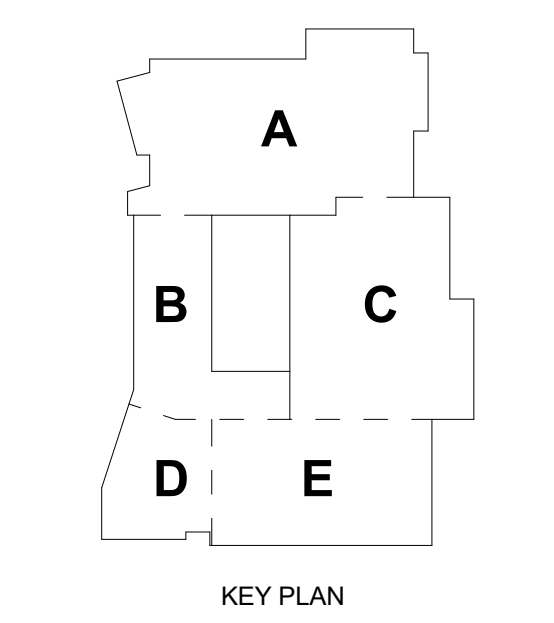
3Si, System Software Support, Inc.
168 Main Street
Northfield, MA 01360
t: 413.498.0069

FOOD SERVICE CONSULTANT

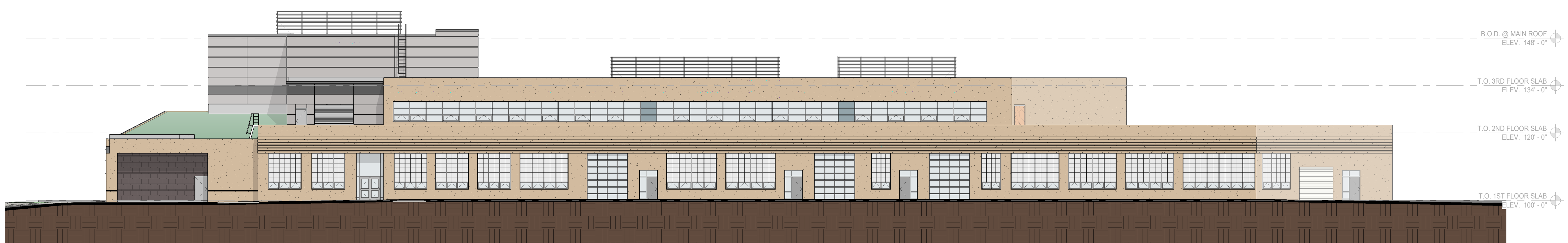
Crabtree McGrath Associates
161 West Main Street
Georgetown, MA 01833
t: 978.352.8500

THEATER CONSULTANT

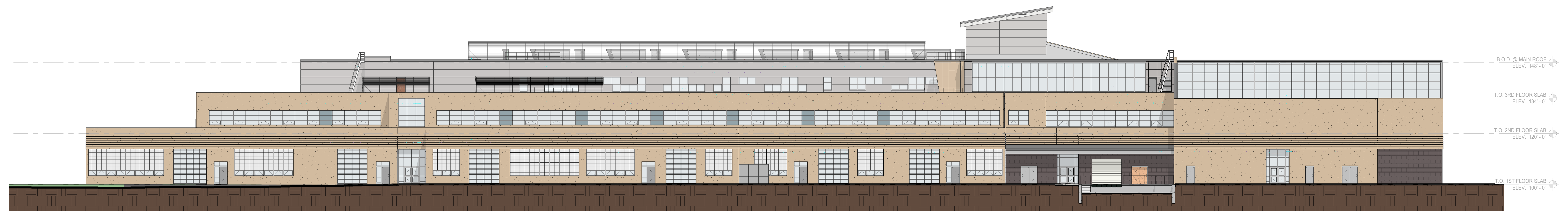
Studio T+L
157 13th Street, Ste 230
Brooklyn, NY 11215
t: 718.788.0588



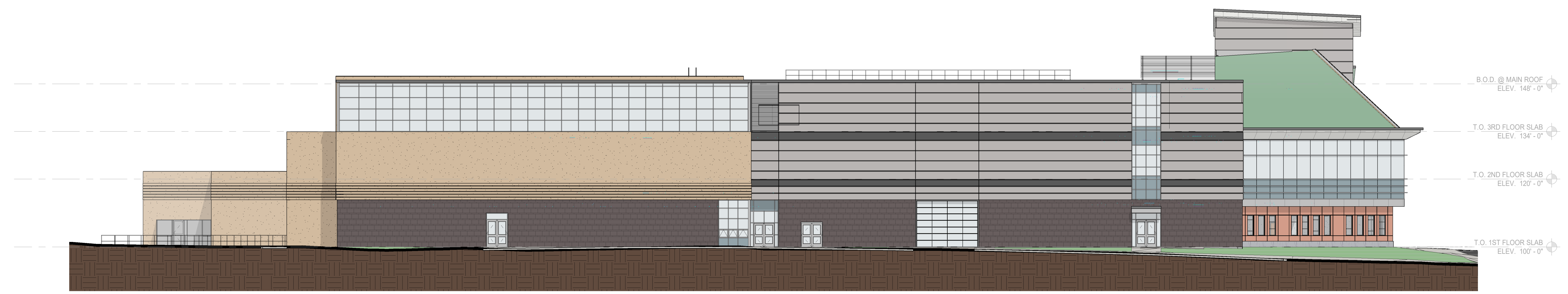
OVERALL BUILDING ELEVATIONS



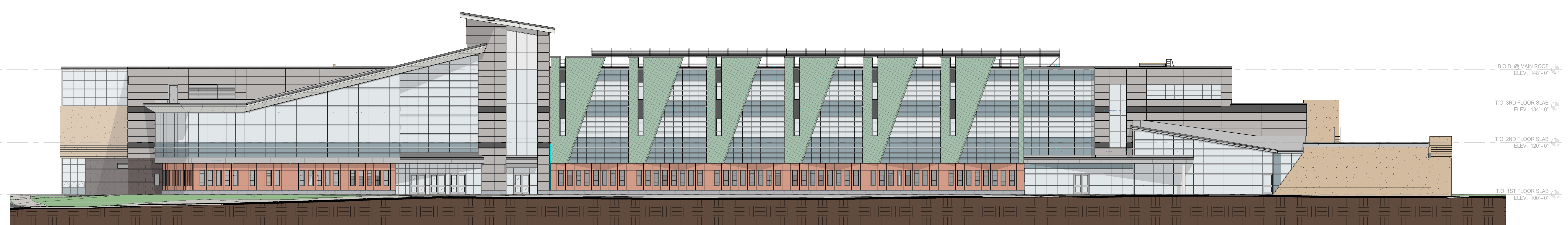
4 OVERALL SOUTH BUILDING ELEVATION
 1/16" = 1'-0"



3 OVERALL EAST BUILDING ELEVATION
 1/16" = 1'-0"



2 OVERALL NORTH BUILDING ELEVATION
 1/16" = 1'-0"



1 OVERALL WEST BUILDING ELEVATION
 1/16" = 1'-0"