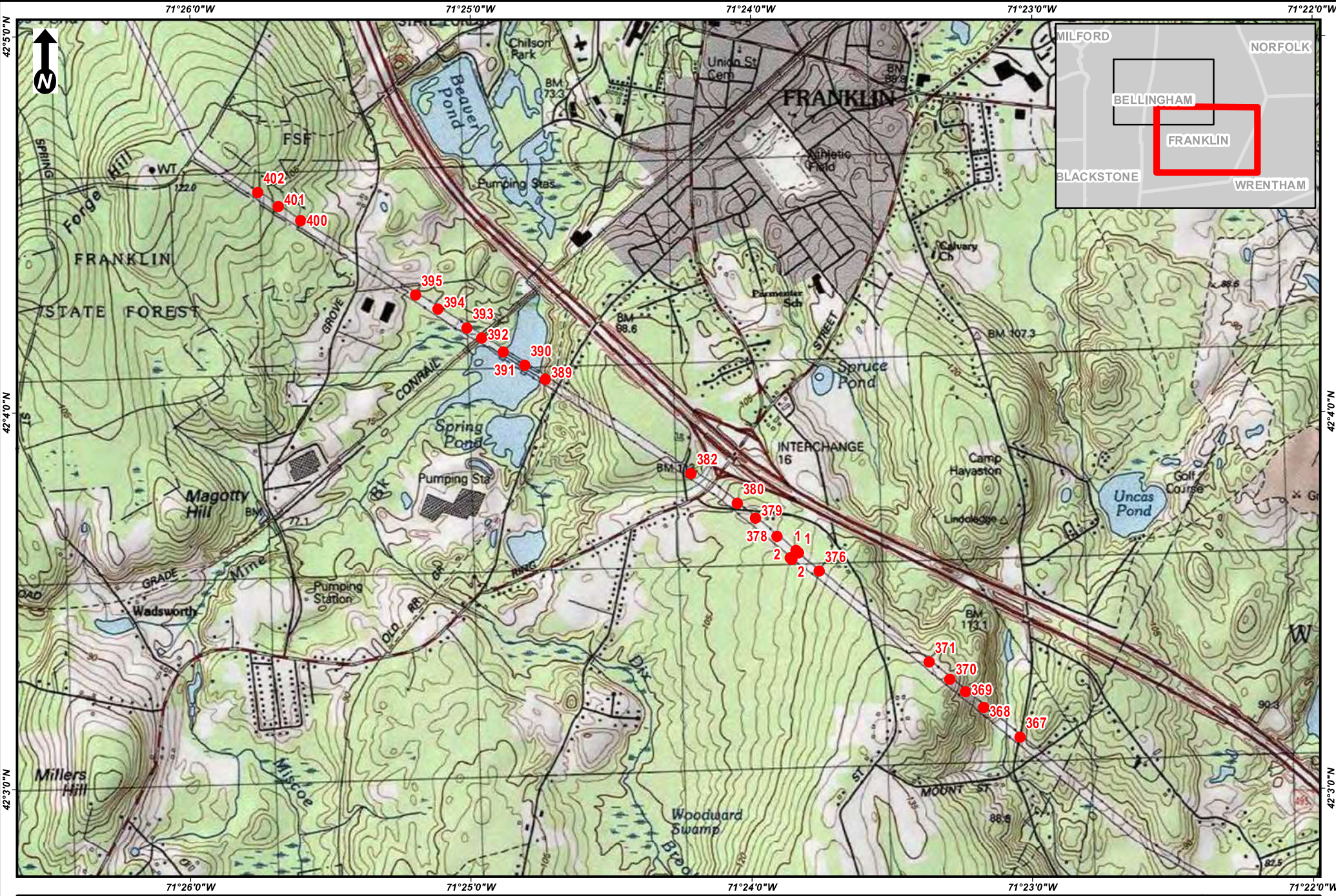


Scale: 1:24,000
1 inch = 2,000 feet
0 1,000 2,000
Feet
(Page Size 8.5 x 11)

PIT MAINTENANCE PROJECT- C129 TRANSMISSION LINE
USGS Site Location Map
Franklin, MA
Page 1 of 2

Source: Copyright©
2013 National
Geographic Society, i-
cubed



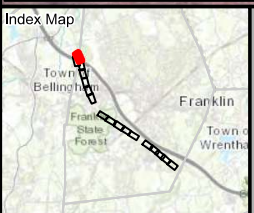
Scale: 1:24,000
1 inch = 2,000 feet
0 1,000 2,000
Feet
(Page Size 8.5 x 11)

PIT MAINTENANCE PROJECT - C129 TRANSMISSION LINE
USGS Site Location Map
Franklin, MA
Page 2 of 2

Source: Copyright©
2013 National
Geographic Society, i-
cubed



Resource Areas Reviewed:
 MADEP Tier Class I and/or Hazardous Material Sites (21E); MADEP Oil and/or Hazardous Material Sites with Activity and Use Limitations; Certified Vernal Pools; Potential Vernal Pools; NHESP Priority Habitats; NHESP Estimated Habitats; NHESP Restricted Data; Wet & Scenic Rivers; NHD Hydrography; Census 2000 Streams; MADEP Hydrologic Connections; MADEP Wetlands; FEMA 100yr Floodplain; NRCS Hydric Soils; Public Water Supply; Zone II Wellhead Protection Area; Interim Wellhead Protection Area; Surface Water Protection Zone; Outstanding Resource Water; Areas of Critical Environmental Concern; Watershed Protection Act Zones; ch. 91 Titlelands Jurisdiction; Article 97 Land; Landfills (Not/Capped, [Un]Lined, [In]Active, Closed)



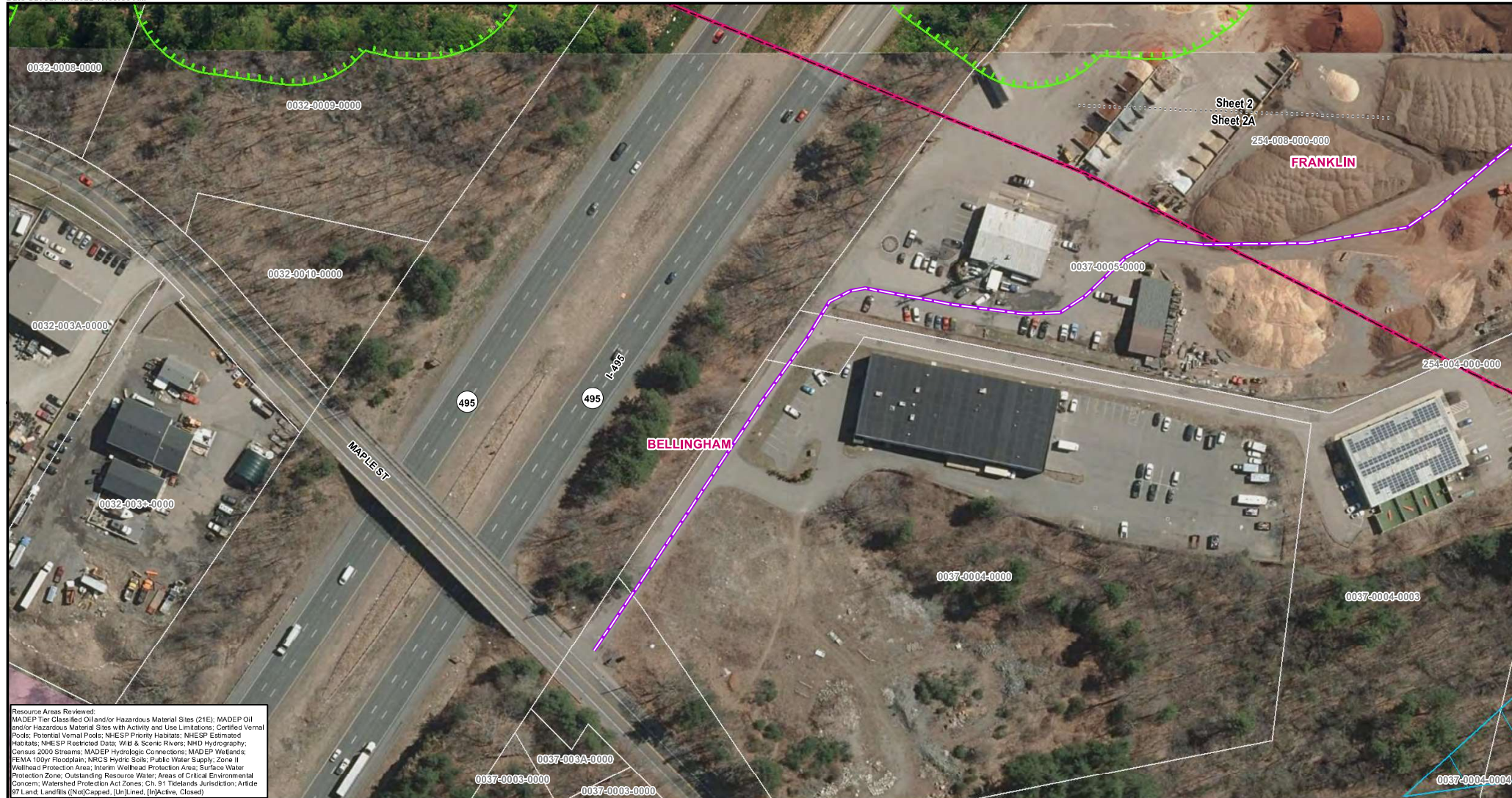
Legend		*Indicates Layers Set to Transparency	
Existing Structure	Field Delineated Waterbody*	100ft Buffer to Wetlands & Streams	DCR Owned Property
PIT Work	Field Delineated Wetland Line	100ft Buffer to BLSF	Parcel Boundary
Existing Overhead Line	Field Delineated Wetland*	100ft Buffer to Vernal Pools	Culverts
Right-of-Way	Estimated Stream Centerline	200ft Riverfront Area	Access Gates
Potential Access Road	Estimated Edge of Bank	Zone II Wellhead Protection Area	Fenceline
Alternate Access Road	Potential Vernal Pools	MHC Historic Point	Stone Walls
Field Delineated Stream Centerline	FEMA 100yr Floodplain*	MHC Historic Area*	Railroad
			Municipal

PIT MAINTENANCE PROJECT - C129 TRANSMISSION LINE
Environmental Resources Map

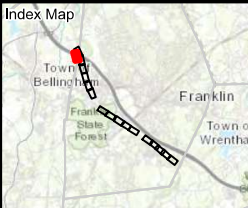
Bellingham & Franklin, MA
 Page 1 of 16

Sources: Esri, HERE, Garmin, Intermap, increment P Corp., GEBCO, USGS, FAO, NPS, NRCAN, GeoBase, IGN, Kadaster NL, Ordnance Survey, Esri Japan, METI, Esri China (Hong Kong), (c) OpenStreetMap contributors, and the GIS User Community

nationalgrid
BSC GROUP



Resource Areas Reviewed:
 MADEP Tier Classified Oil and/or Hazardous Material Sites (21E); MADEP Oil and/or Hazardous Material Sites with Activity and Use Limitations; Certified Vernal Pools; Potential Vernal Pools; NHESP Priority Habitats; NHESP Estimated Habitats; NHESP Restricted Data; Wild & Scenic Rivers; NHD Hydrography; Census 2000 Streams; MADEP Hydrologic Connections; MADEP Wetlands; FEMA 100yr Floodplain; NRCS Hydric Soils; Public Water Supply; Zone II Wellhead Protection Area; Interim Wellhead Protection Area; Surface Water Protection Zones; Outstanding Resource Water; Areas of Critical Environmental Concern; Watershed Protection Act Zones; Ch. 91 Titlelands Jurisdiction; Article 97 Land; Landfile (Not/Capped, [Un]Lined, [In]Active, Closed)



Legend

Existing Structure	Field Delineated Waterbody*	100ft Buffer to Wetlands & Streams	DCR Owned Property
PIT Work	Field Delineated Wetland Line	100ft Buffer to BLSF	Parcel Boundary
Existing Overhead Line	Field Delineated Wetland*	100ft Buffer to Vernal Pools	Culverts
Right-of-Way	Estimated Stream Centerline	200ft Riverfront Area	Access Gates
Potential Access Road	Estimated Edge of Bank	Zone II Wellhead Protection Area	Fenceline
Alternate Access Road	Potential Vernal Pools	MHC Historic Point	Stone Walls
Field Delineated Stream Centerline	FEMA 100yr Floodplain*	MHC Historic Area*	Railroad

Article 97 Lands

Municipal

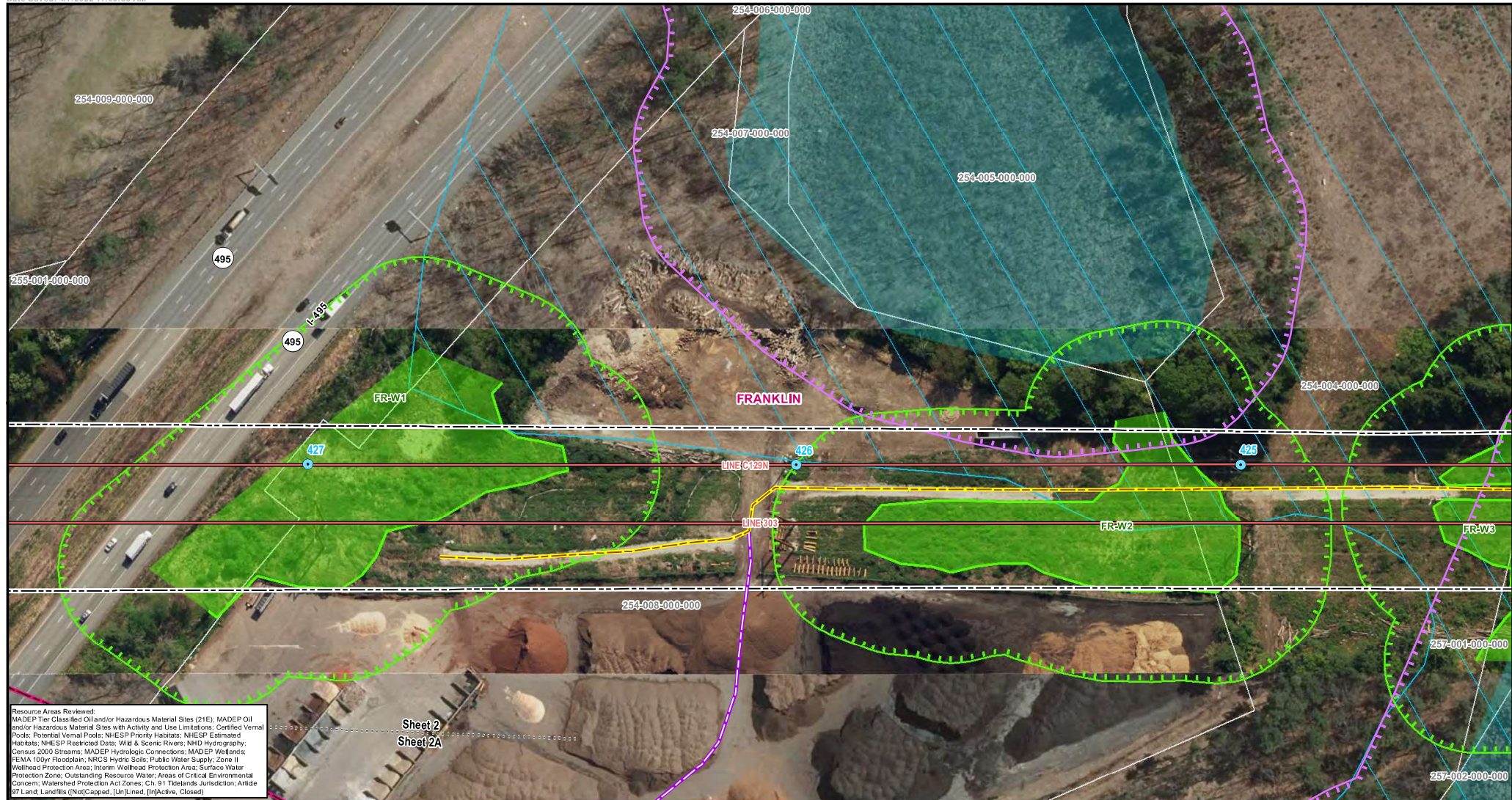
*Indicates Layers Set to Transparency

1 inch = 100 feet
 0 50 100
 Feet

PIT MAINTENANCE PROJECT - C129 TRANSMISSION LINE
Environmental Resources Map

Bellingham & Franklin, MA
 Page 2A of 16

Sources: Esri, HERE, Garmin, Intermap, increment P Corp., GEBCO, USGS, FAO, NPS, NRCAN, GeoBase, IGN, Kadaster NL, Ordnance Survey, Esri Japan, METI, Esri China (Hong Kong), (c) OpenStreetMap contributors, and the GIS User Community

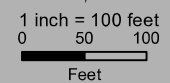


Resource Areas Reviewed:
 MADEP Tier Classified Oil and/or Hazardous Material Sites (21E); MADEP Oil and/or Hazardous Material Sites with Activity and Use Limitations; Certified Vernal Pools; Potential Vernal Pools; NHESP Priority Habitats; NHESP Estimated Habitats; NHESP Restricted Data; Wild & Scenic Rivers; NHD Hydrography; Census 2000 Streams; MADEP Hydrologic Connections; MADEP Wetlands; FEMA 100yr Floodplain; NRCS Hydric Soils; Public Water Supply; Zone II Wellhead Protection Area; Interim Wellhead Protection Area; Surface Water Protection Zone; Outstanding Resource Water; Areas of Critical Environmental Concern; Watershed Protection Act Zones; Ch. 911 Highlands Jurisdiction; Article 97 Land Landfile (Not/Capped, [Un]Lined, [In]Active, Closed)

Sheet 2
 Sheet 2A



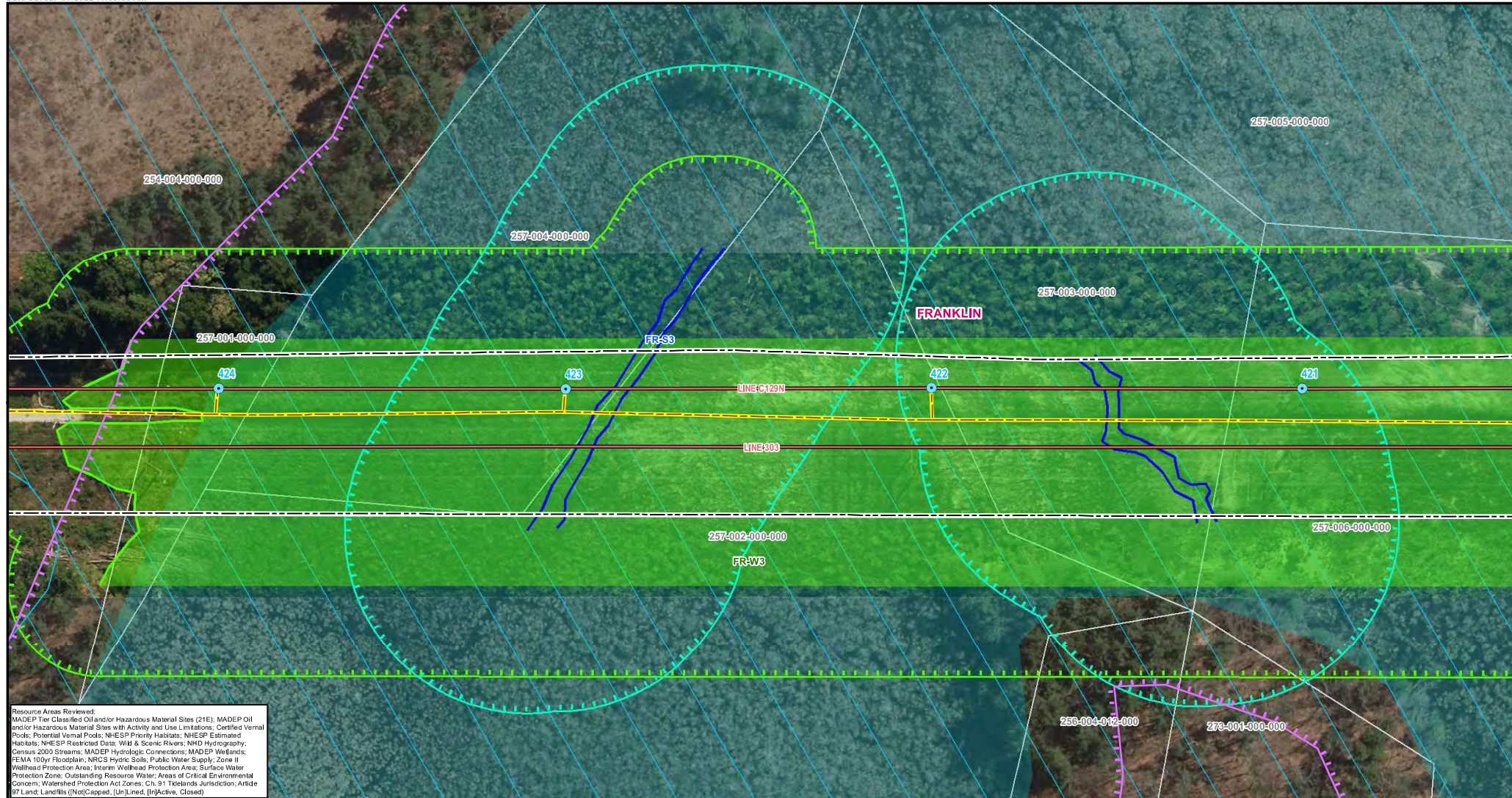
Legend		*Indicates Layers Set to Transparency	
Existing Structure	Field Delineated Waterbody*	100ft Buffer to Wetlands & Streams	DCR Owned Property
PIT Work	Field Delineated Wetland Line	100ft Buffer to BLSF	Parcel Boundary
Existing Overhead Line	Field Delineated Wetland*	100ft Buffer to Vernal Pools	Culverts
Right-of-Way	Estimated Stream Centerline	200ft Riverfront Area	Access Gates
Potential Access Road	Estimated Edge of Bank	Zone II Wellhead Protection Area	Fenceline
Alternate Access Road	Potential Vernal Pools	MHC Historic Point	Stone Walls
Field Delineated Stream Centerline	FEMA 100yr Floodplain*	MHC Historic Area*	Railroad



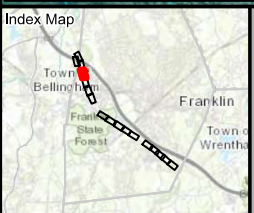
PIT MAINTENANCE PROJECT - C129 TRANSMISSION LINE
Environmental Resources Map

Bellingham & Franklin, MA
 Page 2 of 16

Sources: Esri, HERE, Garmin, Intermap, increment P Corp., GEBCO, USGS, FAO, NPS, NRCAN, GeoBase, IGN, Kadaster NL, Ordnance Survey, Esri Japan, METI, Esri China (Hong Kong), (c) OpenStreetMap contributors, and the GIS User Community



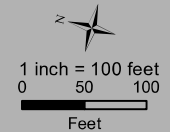
Resource Areas Reviewed:
 MADEP Tier Class I/II Oil and/or Hazardous Material Sites (21E); MADEP Oil and/or Hazardous Material Sites with Activity and Use Limitations; Certified Vernal Pools; Potential Vernal Pools; NHESP Priority Habitats; NHESP Estimated Habitats; NHESP Restricted Data; Wild & Scenic Rivers; NHD Hydrography; Census 2000 Streams; MADEP Hydrologic Connections; MADEP Wetlands; FEMA 100yr Floodplain; NRCS Hydric Soils; Public Water Supply; Zone II Wellhead Protection Area; Interim Wellhead Protection Area; Surface Water Protection Zone; Outstanding Resource Water; Areas of Critical Environmental Concern; Watershed Protection Act Zones; Ch. 91 Tidelands Jurisdiction; Article 97 Land; Landfills (Not/Capped, [Un]Lined, [In]Active, Closed)



Legend

Existing Structure	Field Delineated Waterbody*	100ft Buffer to Wetlands & Streams	100ft Buffer to BLSF	DCR Owned Property
PIT Work	Field Delineated Wetland Line	100ft Buffer to Vernal Pools	200ft Riverfront Area	Parcel Boundary
Existing Overhead Line	Field Delineated Wetland*	Zone II Wellhead Protection Area	Estimated Edge of Bank	Culverts
Right-of-Way	Estimated Stream Centerline	Potential Vernal Pools	FEMA 100yr Floodplain*	Access Gates
Potential Access Road	Alternate Access Road	MHC Historic Point	MHC Historic Area*	Fenceline
Field Delineated Stream Centerline	FEMA 100yr Floodplain*	Stone Walls	Railroad	Railroad

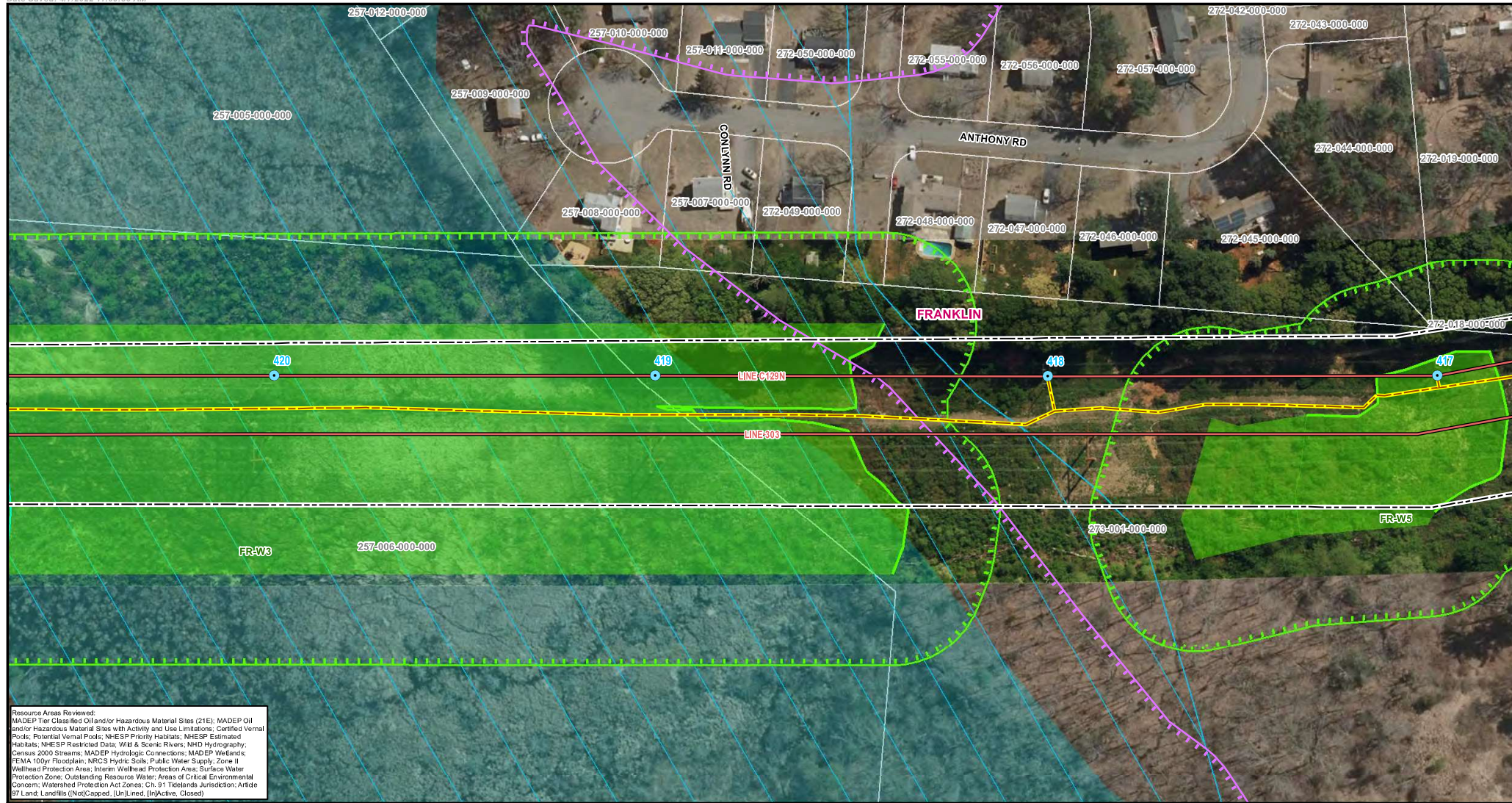
**Indicates Layers Set to Transparency*



PIT MAINTENANCE PROJECT - C129 TRANSMISSION LINE
Environmental Resources Map

Franklin, MA
 Page 3 of 16

Sources: Esri, HERE, Garmin, Intermap, increment P Corp., GEBCO, USGS, FAO, NPS, NRCAN, GeoBase, IGN, Kadaster NL, Ordnance Survey, Esri Japan, METI, Esri China (Hong Kong), (c) OpenStreetMap contributors, and the GIS User Community



Resource Areas Reviewed:
 MADEP Tier Class I/II Oil and/or Hazardous Material Sites (21E); MADEP Oil and/or Hazardous Material Sites with Activity and Use Limitations; Certified Vernal Pools; Potential Vernal Pools; NHESP Priority Habitats; NHESP Estimated Habitats; NHESP Restricted Data; Wild & Scenic Rivers; NHD Hydrography; Census 2000 Streams; MADEP Hydrologic Connections; MADEP Wetlands; FEMA 100yr Floodplain; NRCS Hydric Soils; Public Water Supply; Zone II Wellhead Protection Area; Interim Wellhead Protection Area; Surface Water Protection Zones; Outstanding Resource Water; Areas of Critical Environmental Concern; Watershed Protection Act Zones; Ch. 91 T Highlands Jurisdiction; Article 97 Land; Landfills (Not/Capped, [Un]Lined, [In]Active, Closed)



Legend

● Existing Structure	Field Delineated Waterbody*	100ft Buffer to Wetlands & Streams	DCR Owned Property
● PIT Work	Field Delineated Wetland Line	100ft Buffer to BLSF	Parcel Boundary
— Existing Overhead Line	Field Delineated Wetland*	100ft Buffer to Vernal Pools	⊗ Culverts
— Right-of-Way	Estimated Stream Centerline	200ft Riverfront Area	⬇ Access Gates
— Potential Access Road	Estimated Edge of Bank	Zone II Wellhead Protection Area	⊗ Fenceline
— Alternate Access Road	Potential Vernal Pools	MHC Historic Point	○ Stone Walls
— Field Delineated Stream Centerline	FEMA 100yr Floodplain*	MHC Historic Area*	— Railroad

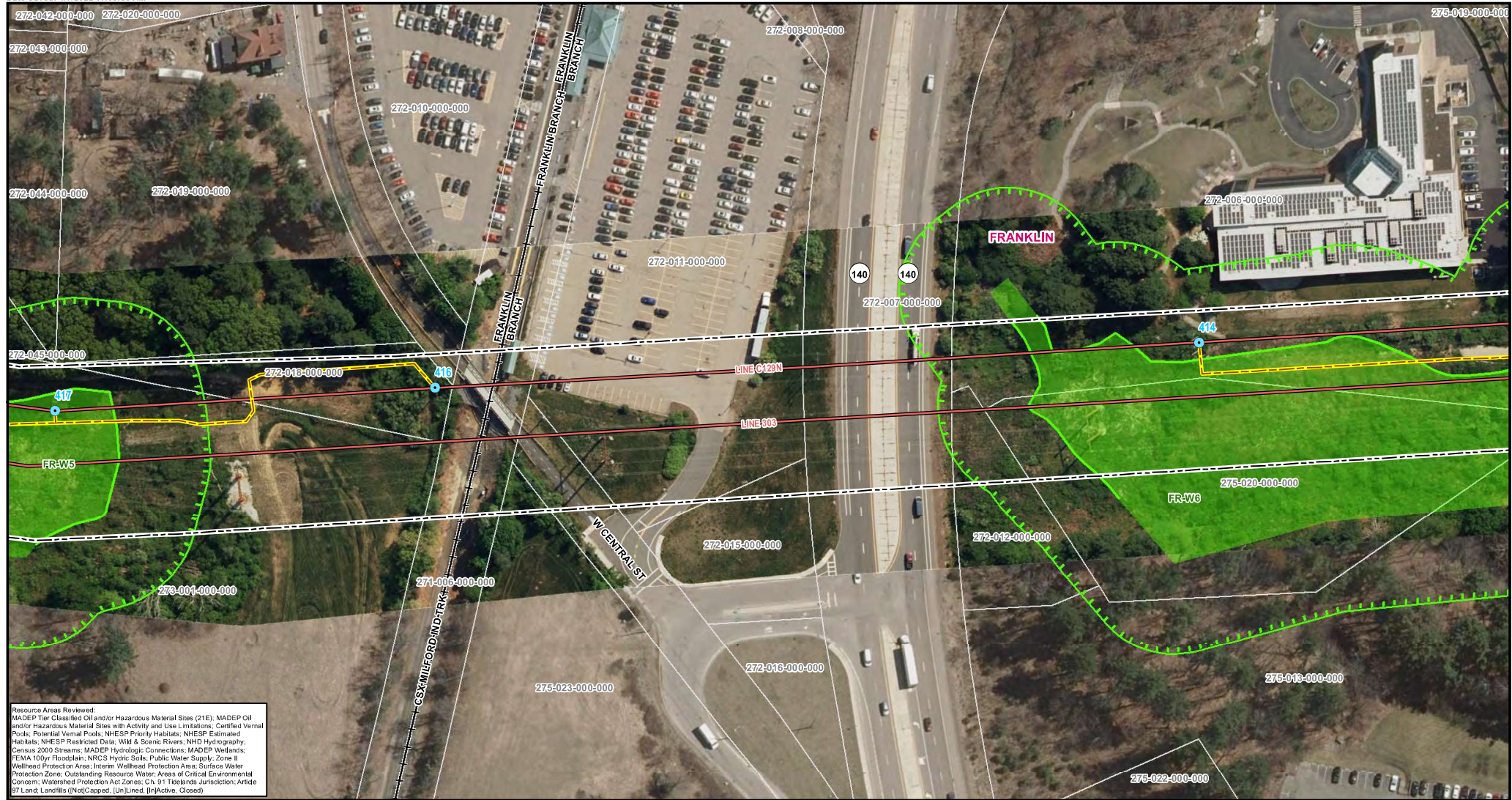
*Indicates Layers Set to Transparency

1 inch = 100 feet
 0 50 100
 Feet

**PIT MAINTENANCE PROJECT-
 C129 TRANSMISSION LINE
 Environmental Resources Map**

Franklin, MA
 Page 4 of 16

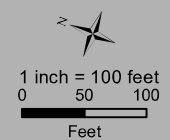
Sources: Esri, HERE, Garmin, Intermap, increment P Corp., GEBCO, USGS, FAO, NPS, NRCAN, GeoBase, IGN, Kadaster NL, Ordnance Survey, Esri Japan, METI, Esri China (Hong Kong), (c) OpenStreetMap contributors, and the GIS User Community



Resource Areas Reviewed:
 MADEP Tier Class I and/or Hazardous Material Sites (21E); MADEP Oil and/or Hazardous Material Sites with Activity and Use Limitations; Certified Vernal Pools; Potential Vernal Pools; NHESP Priority Habitats; NHESP Estimated Habitats; NHESP Restricted Data; Wild & Scenic Rivers; NHD Hydrography; Census 2000 Streams; MADEP Hydrologic Connections; MADEP Wetlands; FEMA 100yr Floodplain; NRCS Hydric Soils; Public Water Supply; Zone II Wellhead Protection Area; Interim Wellhead Protection Area; Surface Water Protection Zones; Outstanding Resource Water; Areas of Critical Environmental Concern; Watershed Protection Act Zones; Ch. 91F Wetlands Jurisdiction; Article 97 Land; Landfile (Not/Capped, [Un]Lined, [In]Active, Closed)



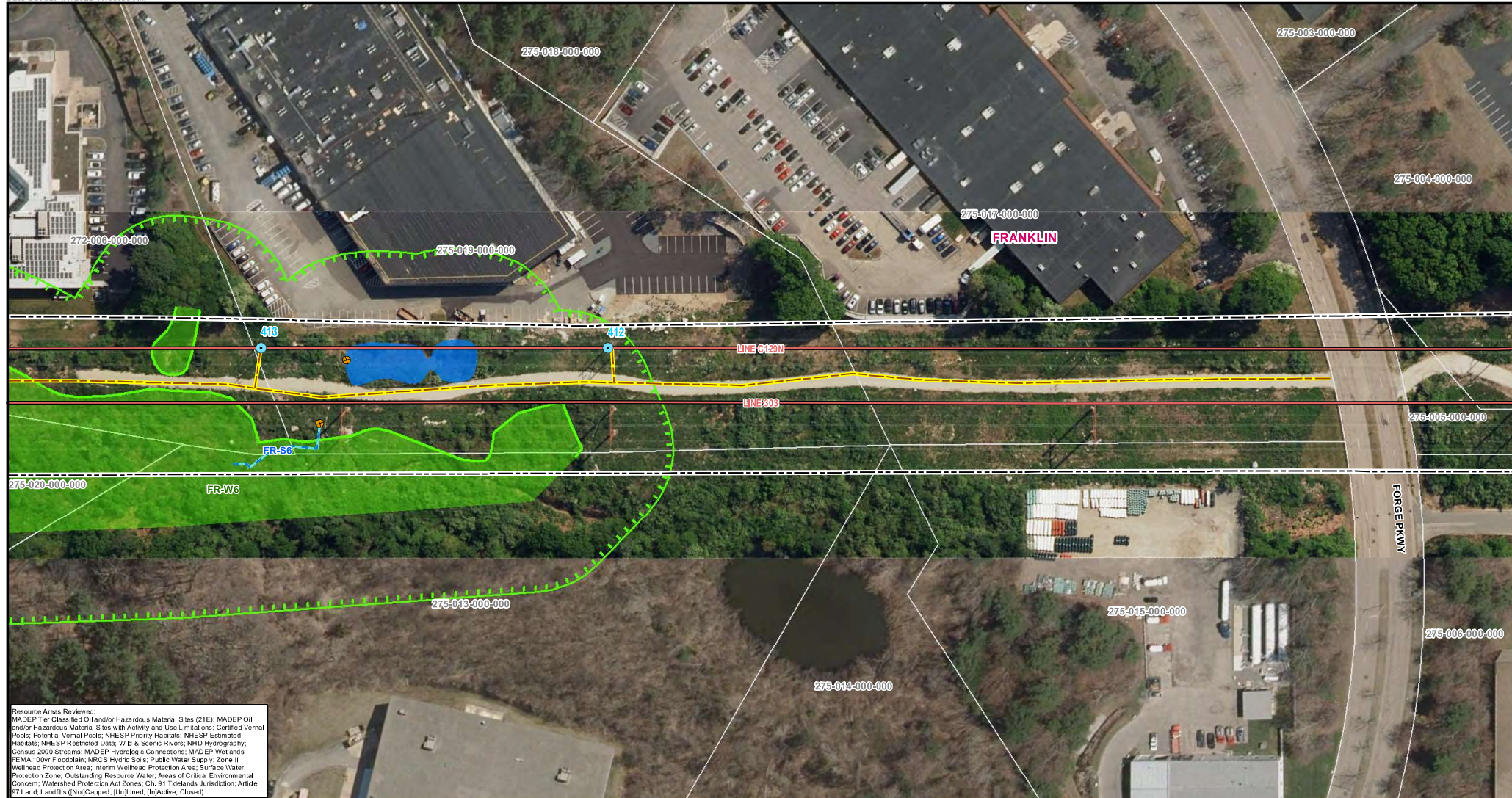
Legend		*Indicates Layers Set to Transparency	
Existing Structure	Field Delineated Waterbody*	100ft Buffer to Wetlands & Streams	DCR Owned Property
PIT Work	Field Delineated Wetland Line	100ft Buffer to BLSF	Parcel Boundary
Existing Overhead Line	Field Delineated Wetland*	100ft Buffer to Vernal Pools	Culverts
Right-of-Way	Estimated Stream Centerline	200ft Riverfront Area	Access Gates
Potential Access Road	Estimated Edge of Bank	Zone II Wellhead Protection Area	Fence Line
Alternate Access Road	Potential Vernal Pools	MHC Historic Point	Stone Walls
Field Delineated Stream Centerline	FEMA 100yr Floodplain*	MHC Historic Area*	Railroad



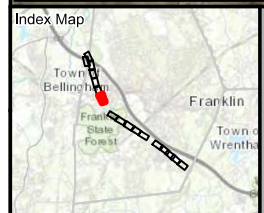
**PIT MAINTENANCE PROJECT-
 C129 TRANSMISSION LINE
 Environmental Resources Map**

Franklin, MA
 Page 5 of 16

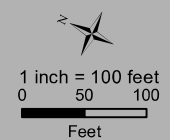
Sources: Esri, HERE, Garmin, Intermap, increment P Corp., GEBCO, USGS, FAO, NPS, NRCAN, GeoBase, IGN, Kadaster NL, Ordnance Survey, Esri Japan, METI, Esri China (Hong Kong), (c) OpenStreetMap contributors, and the GIS User Community



Resource Areas Reviewed:
 MADEP Tier Classified Oil and/or Hazardous Material Sites (21E); MADEP Oil and/or Hazardous Material Sites with Activity and Use Limitations; Certified Vernal Pools; Potential Vernal Pools; NHEHP Priority Habitats; NHEHP Estimated Habitats; NHEHP Restricted Data; Wild & Scenic Rivers; NHD Hydrography; Census 2000 Streams; MADEP Hydrologic Connections; MADEP Wetlands; FEMA 100yr Floodplain; NRCS Hydric Soils; Public Water Supply; Zone II Wellhead Protection Area; Interim Wellhead Protection Area; Surface Water Protection Zones; Outstanding Resource Water; Areas of Critical Environmental Concern; Watershed Protection Act Zones; Ch. 91T Highlands Jurisdiction; Article 97 Land Landfills (Not) Capped, (Un)lined, (In)Active, Closed



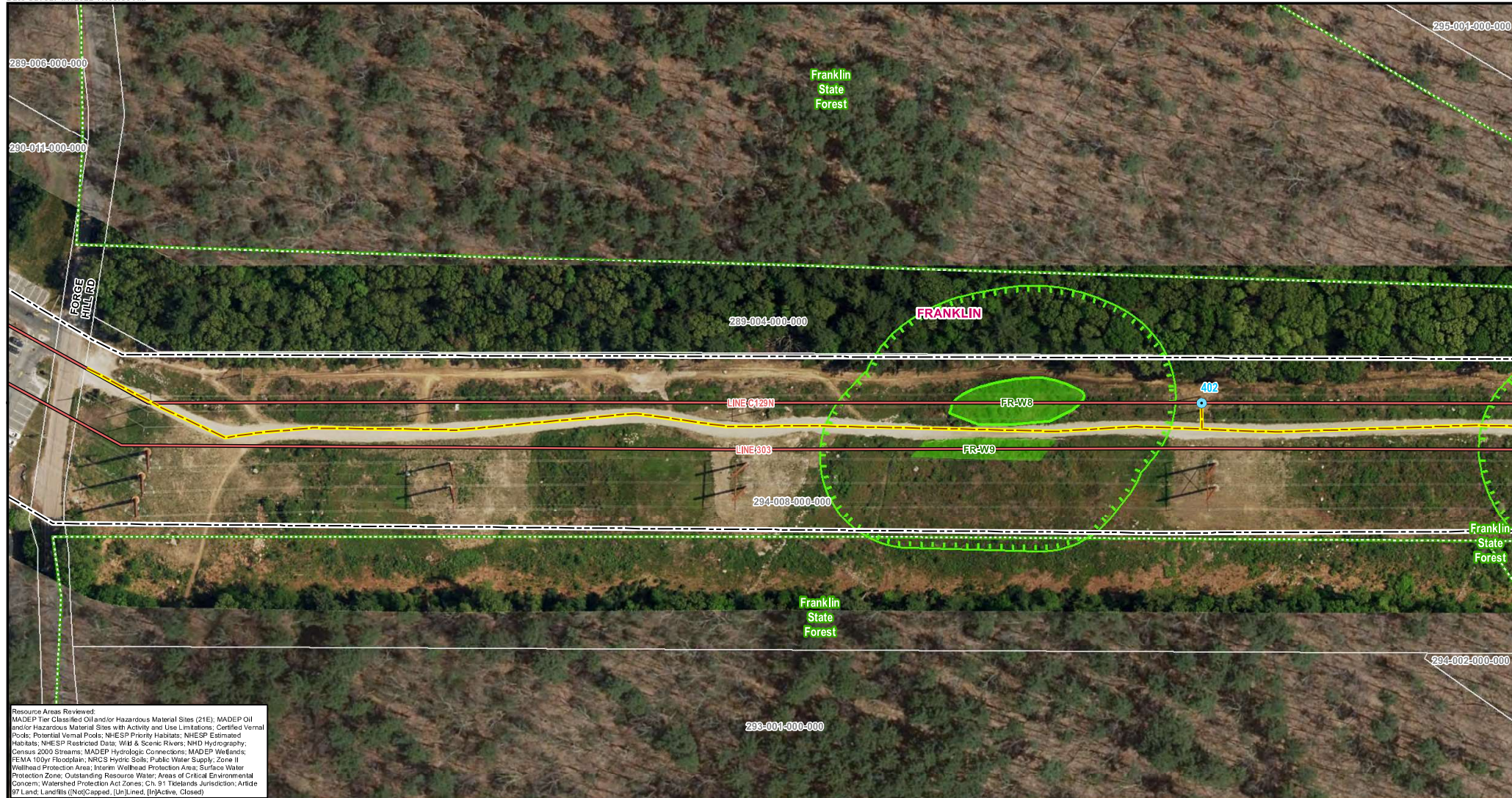
Legend		*Indicates Layers Set to Transparency	
Existing Structure	Field Delineated Waterbody*	100ft Buffer to Wetlands & Streams	DCR Owned Property
PIT Work	Field Delineated Wetland Line	100ft Buffer to BLSF	Parcel Boundary
Existing Overhead Line	Field Delineated Wetland*	100ft Buffer to Vernal Pools	Culverts
Right-of-Way	Estimated Stream Centerline	200ft Riverfront Area	Access Gates
Potential Access Road	Estimated Edge of Bank	Zone II Wellhead Protection Area	Fenceline
Alternate Access Road	Potential Vernal Pools	MHC Historic Point	Stone Walls
Field Delineated Stream Centerline	FEMA 100yr Floodplain*	MHC Historic Area*	Railroad



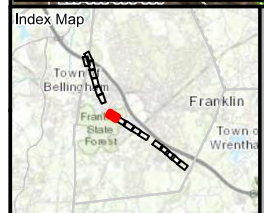
PIT MAINTENANCE PROJECT - C129 TRANSMISSION LINE
Environmental Resources Map

Franklin, MA
 Page 6 of 16

Sources: Esri, HERE, Garmin, Intermap, increment P Corp., GEBCO, USGS, FAO, NPS, NRCAN, GeoBase, IGN, Kadaster NL, Ordnance Survey, Esri Japan, METI, Esri China (Hong Kong), (c) OpenStreetMap contributors, and the GIS User Community



Resource Areas Reviewed:
 MADEP Tier Classified Oil and/or Hazardous Material Sites (21E); MADEP Oil and/or Hazardous Material Sites with Activity and Use Limitations; Certified Vernal Pools; Potential Vernal Pools; NHESP Priority Habitats; NHESP Estimated Habitats; NHESP Restricted Data; Wild & Scenic Rivers; NHD Hydrography; Census 2000 Streams; MADEP Hydrologic Connections; MADEP Wetlands; FEMA 100yr Floodplain; NRCS Hydric Soils; Public Water Supply; Zone II Wellhead Protection Area; Interim Wellhead Protection Area; Surface Water Protection Zones; Outstanding Resource Water; Areas of Critical Environmental Concern; Watershed Protection Act Zones; ch. 91F Wetlands Jurisdiction; Article 97 Land; Landfile (Not/Capped, [Un]Lined, [In]Active, Closed)



Legend

Existing Structure	Field Delineated Waterbody*	100ft Buffer to Wetlands & Streams	DCR Owned Property
PIT Work	Field Delineated Wetland Line	100ft Buffer to BLSF	Parcel Boundary
Existing Overhead Line	Field Delineated Wetland*	100ft Buffer to Vernal Pools	Culverts
Right-of-Way	Estimated Stream Centerline	200ft Riverfront Area	Access Gates
Potential Access Road	Estimated Edge of Bank	Zone II Wellhead Protection Area	Fencesline
Alternate Access Road	Potential Vernal Pools	MHC Historic Point	Stone Walls
Field Delineated Stream Centerline	FEMA 100yr Floodplain*	MHC Historic Area*	Railroad

**Indicates Layers Set to Transparency*

1 inch = 100 feet
 0 50 100
 Feet

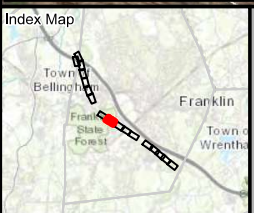
**PIT MAINTENANCE PROJECT-
 C129 TRANSMISSION LINE
 Environmental Resources Map**

Franklin, MA
 Page 7 of 16

Sources: Esri, HERE, Garmin, Intermap, increment P Corp., GEBCO, USGS, FAO, NPS, NRCAN, GeoBase, IGN, Kadaster NL, Ordnance Survey, Esri Japan, METI, Esri China (Hong Kong), (c) OpenStreetMap contributors, and the GIS User Community



Resource Areas Reviewed:
 MADEP Tier Classified Oil and/or Hazardous Material Sites (21E); MADEP Oil and/or Hazardous Material Sites with Activity and Use Limitations; Certified Vernal Pools; Potential Vernal Pools; NHEHP Priority Habitats; NHESP Estimated Habitats; NHESP Restricted Data; Wild & Scenic Rivers; NHD Hydrography; Census 2000 Streams; MADEP Hydrologic Connections; MADEP Wetlands; FEMA 100yr Floodplain; NRCS Hydric Soils; Public Water Supply; Zone II Wellhead Protection Area; Interim Wellhead Protection Area; Surface Water Protection Zones; Outstanding Resource Water; Areas of Critical Environmental Concern; Watershed Protection Act Zones; Ch. 91 T Islands Jurisdiction; Article 97 Land; Landfile (Not)Capped, (Un)lined, (In)Active, Closed



Legend		*Indicates Layers Set to Transparency	
Existing Structure	Field Delineated Waterbody*	100ft Buffer to Wetlands & Streams	DCR Owned Property
PIT Work	Field Delineated Wetland Line	100ft Buffer to BLSF	Parcel Boundary
Existing Overhead Line	Field Delineated Wetland*	100ft Buffer to Vernal Pools	Culverts
Right-of-Way	Estimated Stream Centerline	200ft Riverfront Area	Access Gates
Potential Access Road	Estimated Edge of Bank	Zone II Wellhead Protection Area	Fenceline
Alternate Access Road	Potential Vernal Pools	MHC Historic Point	Stone Walls
Field Delineated Stream Centerline	FEMA 100yr Floodplain*	MHC Historic Area*	Railroad

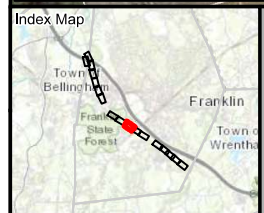
**PIT MAINTENANCE PROJECT-
 C129 TRANSMISSION LINE
 Environmental Resources Map**

Franklin, MA
 Page 8 of 16

Sources: Esri, HERE, Garmin, Intermap, increment P Corp., GEBCO, USGS, FAO, NPS, NRCAN, GeoBase, IGN, Kadaster NL, Ordnance Survey, Esri Japan, METI, Esri China (Hong Kong), (c) OpenStreetMap contributors, and the GIS User Community



Resource Areas Reviewed:
 MADEP Tier Classified Oil and/or Hazardous Material Sites (21E); MADEP Oil and/or Hazardous Material Sites with Activity and Use Limitations; Certified Vernal Pools; Potential Vernal Pools; NHESP Priority Habitats; NHESP Estimated Habitats; NHESP Restricted Data; Wild & Scenic Rivers; NHD Hydrography; Census 2000 Streams; MADEP Hydrologic Connections; MADEP Wetlands; FEMA 100yr Floodplain; NRCS Hydric Soils; Public Water Supply; Zone II Wellhead Protection Area; Interim Wellhead Protection Area; Surface Water Protection Zones; Outstanding Resource Water; Areas of Critical Environmental Concern; Watershed Protection Act Zones; Ch. 91 Titlelands Jurisdiction; Article 97 Land Landfills (Not/Capped, [Un]Lined, [In]Active, Closed)



Legend

Existing Structure	Field Delineated Waterbody*	100ft Buffer to Wetlands & Streams	DCR Owned Property
PIT Work	Field Delineated Wetland Line	100ft Buffer to BLSF	Parcel Boundary
Existing Overhead Line	Field Delineated Wetland*	100ft Buffer to Vernal Pools	Culverts
Right-of-Way	Estimated Stream Centerline	200ft Riverfront Area	Access Gates
Potential Access Road	Estimated Edge of Bank	Zone II Wellhead Protection Area	Fenceline
Alternate Access Road	Potential Vernal Pools	MHC Historic Point	Stone Walls
Field Delineated Stream Centerline	FEMA 100yr Floodplain*	MHC Historic Area*	Railroad

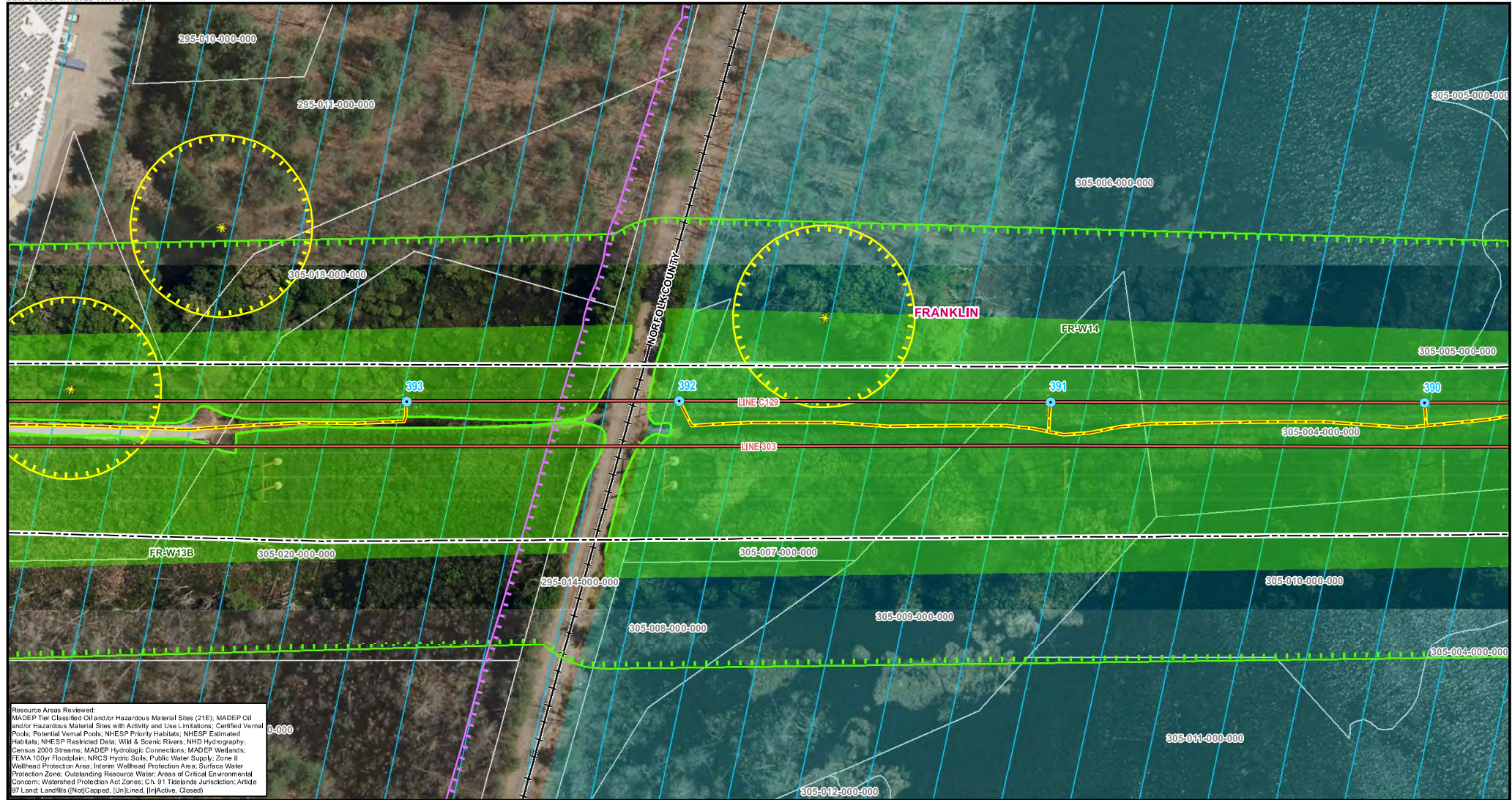
**Indicates Layers Set to Transparency*

1 inch = 100 feet
 0 50 100
 Feet

PIT MAINTENANCE PROJECT - C129 TRANSMISSION LINE
Environmental Resources Map

Franklin, MA
 Page 9 of 16

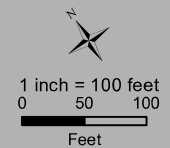
Sources: Esri, HERE, Garmin, Intermap, increment P Corp., GEBCO, USGS, FAO, NPS, NRCAN, GeoBase, IGN, Kadaster NL, Ordnance Survey, Esri Japan, METI, Esri China (Hong Kong), (c) OpenStreetMap contributors, and the GIS User Community



Legend

Existing Structure	Field Delineated Waterbody*	100ft Buffer to Wetlands & Streams	100ft Buffer to BLSF	DCR Owned Property
PIT Work	Field Delineated Wetland Line	100ft Buffer to Vernal Pools	Parcel Boundary	Culverts
Existing Overhead Line	Field Delineated Wetland*	200ft Riverfront Area	Access Gates	Fenceline
Right-of-Way	Estimated Stream Centerline	Zone II Wellhead Protection Area	Stone Walls	Railroad
Potential Access Road	Estimated Edge of Bank	MHC Historic Point		
Alternate Access Road	Potential Vernal Pools	MHC Historic Area*		
Field Delineated Stream Centerline	FEMA 100yr Floodplain*			

*Indicates Layers Set to Transparency



PIT MAINTENANCE PROJECT - C129 TRANSMISSION LINE
Environmental Resources Map

Franklin, MA
 Page 10 of 16

Sources: Esri, HERE, Garmin, Intermap, increment P Corp., GEBCO, USGS, FAO, NPS, NRCAN, GeoBase, IGN, Kadaster NL, Ordnance Survey, Esri Japan, METI, Esri China (Hong Kong), (c) OpenStreetMap contributors, and the GIS User Community



Legend

Existing Structure	Field Delineated Waterbody*	100ft Buffer to Wetlands & Streams	DCR Owned Property
PIT Work	Field Delineated Wetland Line	100ft Buffer to BLSF	Parcel Boundary
Existing Overhead Line	Field Delineated Wetland*	100ft Buffer to Vernal Pools	Culverts
Right-of-Way	Estimated Stream Centerline	200ft Riverfront Area	Access Gates
Potential Access Road	Estimated Edge of Bank	Zone II Wellhead Protection Area	Fenceline
Alternate Access Road	Potential Vernal Pools	MHC Historic Point	Stone Walls
Field Delineated Stream Centerline	FEMA 100yr Floodplain*	MHC Historic Area*	Railroad

*Indicates Layers Set to Transparency

1 inch = 100 feet
 0 50 100
 Feet

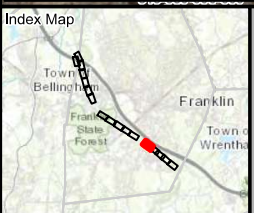
**PIT MAINTENANCE PROJECT-
 C129 TRANSMISSION LINE
 Environmental Resources Map**

Franklin, MA
 Page 11 of 16

Sources: Esri, HERE, Garmin, Intermap, increment P Corp., GEBCO, USGS, FAO, NPS, NRCAN, GeoBase, IGN, Kadaster NL, Ordnance Survey, Esri Japan, METI, Esri China (Hong Kong), (c) OpenStreetMap contributors, and the GIS User Community



Resource Areas Reviewed:
 MADEP Tier Classified Oil and/or Hazardous Material Sites (21E); MADEP Oil and/or Hazardous Material Sites with Activity and Use Limitations; Certified Vernal Pools; Potential Vernal Pools; NHESP Priority Habitats; NHESP Estimated Habitats; NHESP Restricted Data; Wild & Scenic Rivers; NHD Hydrography; Census 2000 Streams; MADEP Hydrologic Connections; MADEP Wetlands; FEMA 100yr Floodplain; NRCS Hydric Soils; Public Water Supply; Zone II Wellhead Protection Area; Interim Wellhead Protection Area; Surface Water Protection Zones; Outstanding Resource Water; Areas of Critical Environmental Concern; Watershed Protection Act Zones; Ch. 91 T Wetlands Jurisdiction; Article 97 Land; Landfills (Not)Capped, [Un]Lined, [In]Active, Closed



Legend

Existing Structure	Field Delineated Waterbody*	100ft Buffer to Wetlands & Streams	DCR Owned Property
PIT Work	Field Delineated Wetland Line	100ft Buffer to BLSF	Parcel Boundary
Existing Overhead Line	Field Delineated Wetland*	100ft Buffer to Vernal Pools	Culverts
Right-of-Way	Estimated Stream Centerline	200ft Riverfront Area	Access Gates
Potential Access Road	Estimated Edge of Bank	Zone II Wellhead Protection Area	Fenceline
Alternate Access Road	Potential Vernal Pools	MHC Historic Point	Stone Walls
Field Delineated Stream Centerline	FEMA 100yr Floodplain*	MHC Historic Area*	Railroad

*Indicates Layers Set to Transparency

1 inch = 100 feet
 0 50 100
 Feet

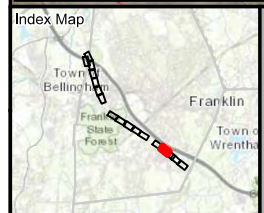
**PIT MAINTENANCE PROJECT-
 C129 TRANSMISSION LINE
 Environmental Resources Map**

Franklin, MA
 Page 12 of 16

Sources: Esri, HERE, Garmin, Intermap, increment P Corp., GEBCO, USGS, FAO, NPS, NRCAN, GeoBase, IGN, Kadaster NL, Ordnance Survey, Esri Japan, METI, Esri China (Hong Kong), (c) OpenStreetMap contributors, and the GIS User Community



Resource Areas Reviewed:
 MADEP Tier Class I/II Oil and/or Hazardous Material Sites (21E); MADEP Oil and/or Hazardous Material Sites with Activity and Use Limitations; Certified Vernal Pools; Potential Vernal Pools; NHEHP Priority Habitats; NHEHP Estimated Habitats; NHEHP Restricted Data; Wild & Scenic Rivers; NHD Hydrography; Census 2000 Streams; MADEP Hydrologic Connections; MADEP Wetlands; FEMA 100yr Floodplain; NRCS Hydric Soils; Public Water Supply; Zone II Wellhead Protection Area; Interim Wellhead Protection Area; Surface Water Protection Zones; Outstanding Resource Water; Areas of Critical Environmental Concern; Watershed Protection Act Zones; Ch. 91F Wetlands Jurisdiction; Article 97 Land; Landfills (Not/Capped, [Un]Lined, [In]Active, Closed)



Legend

Existing Structure	Field Delineated Waterbody*	100ft Buffer to Wetlands & Streams	DCR Owned Property
PIT Work	Field Delineated Wetland Line	100ft Buffer to BLSF	Parcel Boundary
Existing Overhead Line	Field Delineated Wetland*	100ft Buffer to Vernal Pools	Culverts
Right-of-Way	Estimated Stream Centerline	200ft Riverfront Area	Access Gates
Potential Access Road	Estimated Edge of Bank	Zone II Wellhead Protection Area	Fenceline
Alternate Access Road	Potential Vernal Pools	MHC Historic Point	Stone Walls
Field Delineated Stream Centerline	FEMA 100yr Floodplain*	MHC Historic Area*	Railroad

*Indicates Layers Set to Transparency

1 inch = 100 feet
 0 50 100
 Feet

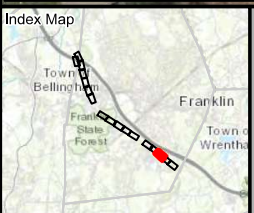
**PIT MAINTENANCE PROJECT-
 C129 TRANSMISSION LINE
 Environmental Resources Map**

Franklin, MA
 Page 13 of 16

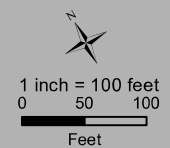
Sources: Esri, HERE, Garmin, Intermap, increment P Corp., GEBCO, USGS, FAO, NPS, NRCAN, GeoBase, IGN, Kadaster NL, Ordnance Survey, Esri Japan, METI, Esri China (Hong Kong), (c) OpenStreetMap contributors, and the GIS User Community



Resource Areas Reviewed:
 MADEP Tier Classified Oil and/or Hazardous Material Sites (21E); MADEP Oil and/or Hazardous Material Sites with Activity and Use Limitations; Certified Vernal Pools; Potential Vernal Pools; NHESP Priority Habitats; NHESP Estimated Habitats; NHESP Restricted Data; Wild & Scenic Rivers; NHD Hydrography; Census 2000 Streams; MADEP Hydrologic Connections; MADEP Wetlands; FEMA 100yr Floodplain; NRCS Hydric Soils; Public Water Supply; Zone II Wellhead Protection Area; Interim Wellhead Protection Area; Surface Water Protection Zones; Outstanding Resource Water; Areas of Critical Environmental Concern; Watershed Protection Act Zones; Ch. 91 Titlelands Jurisdiction; Article 97 Land; Landfills (Not)Capped, (Un)lined, (In)Active, Closed



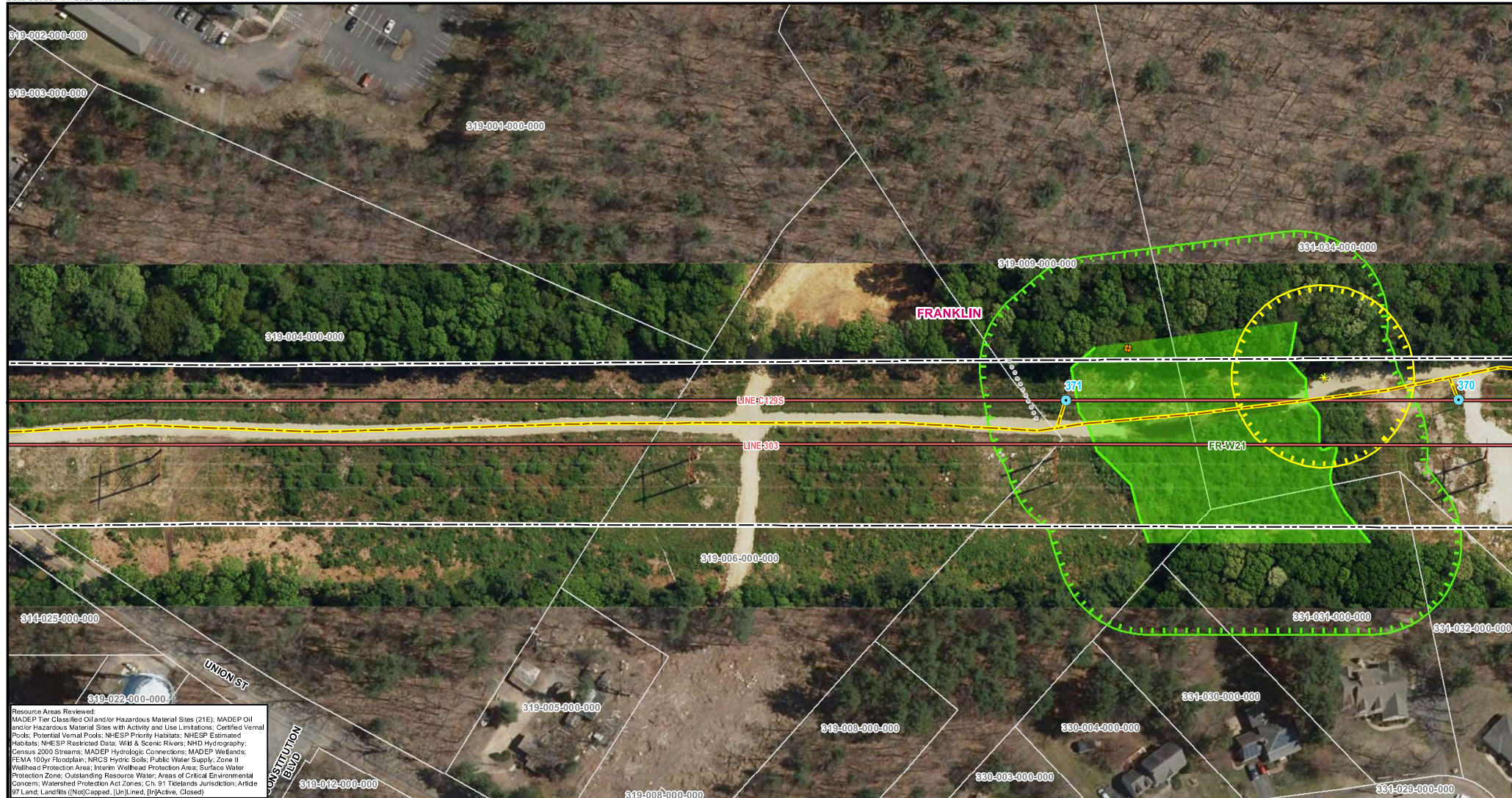
Legend		*Indicates Layers Set to Transparency	
Existing Structure	Field Delineated Waterbody*	100ft Buffer to Wetlands & Streams	DCR Owned Property
PIT Work	Field Delineated Wetland Line	100ft Buffer to BLSF	Parcel Boundary
Existing Overhead Line	Field Delineated Wetland*	100ft Buffer to Vernal Pools	Culverts
Right-of-Way	Estimated Stream Centerline	200ft Riverfront Area	Access Gates
Potential Access Road	Estimated Edge of Bank	Zone II Wellhead Protection Area	Fenceline
Alternate Access Road	Potential Vernal Pools	MHC Historic Point	Stone Walls
Field Delineated Stream Centerline	FEMA 100yr Floodplain*	MHC Historic Area*	Railroad



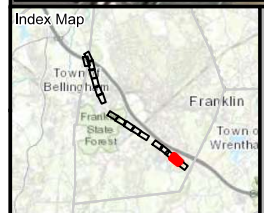
PIT MAINTENANCE PROJECT - C129 TRANSMISSION LINE
Environmental Resources Map

Franklin, MA
 Page 14 of 16

Sources: Esri, HERE, Garmin, Intermap, increment P Corp., GEBCO, USGS, FAO, NPS, NRCAN, GeoBase, IGN, Kadaster NL, Ordnance Survey, Esri Japan, METI, Esri China (Hong Kong), (c) OpenStreetMap contributors, and the GIS User Community



Resource Areas Reviewed:
 MADEP Tier Classified Oil and/or Hazardous Material Sites (21E); MADEP Oil and/or Hazardous Material Sites with Activity and Use Limitations; Certified Vernal Pools; Potential Vernal Pools; NHESP Priority Habitats; NHESP Estimated Habitats; NHESP Restricted Data; Wild & Scenic Rivers; NHD Hydrography; Census 2000 Streams; MADEP Hydrologic Connections; MADEP Wetlands; FEMA 100yr Floodplain; NRC3 Hydric Soils; Public Water Supply; Zone II Wellhead Protection Area; Interim Wellhead Protection Area; Surface Water Protection Zones; Outstanding Resource Water; Areas of Critical Environmental Concern; Watershed Protection Act Zones; Ch. 91F Islands Jurisdiction; Article 97 Land Landfills (Not Capped, [Un]Lined, [In]Active, Closed)



Legend		*Indicates Layers Set to Transparency	
Existing Structure	Field Delineated Waterbody*	100ft Buffer to Wetlands & Streams	DCR Owned Property
PIT Work	Field Delineated Wetland Line	100ft Buffer to BLSF	Parcel Boundary
Existing Overhead Line	Field Delineated Wetland*	100ft Buffer to Vernal Pools	Culverts
Right-of-Way	Estimated Stream Centerline	200ft Riverfront Area	Access Gates
Potential Access Road	Potential Edge of Bank	Zone II Wellhead Protection Area	Fence Line
Alternate Access Road	Potential Vernal Pools	MHC Historic Point	Stone Walls
Field Delineated Stream Centerline	FEMA 100yr Floodplain*	MHC Historic Area*	Railroad

**PIT MAINTENANCE PROJECT-
 C129 TRANSMISSION LINE**
 Environmental Resources Map

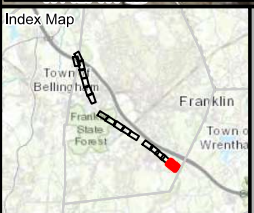
Franklin, MA
 Page 15 of 16

Sources: Esri, HERE, Garmin, Intermap, increment P Corp., GEBCO, USGS, FAO, NPS, NRCAN, GeoBase, IGN, Kadaster NL, Ordnance Survey, Esri Japan, METI, Esri China (Hong Kong), (c) OpenStreetMap contributors, and the GIS User Community

nationalgrid
BSC GROUP



Resource Areas Reviewed:
 MADEP Tier Class I and/or Hazardous Material Sites (21E); MADEP Oil and/or Hazardous Material Sites with Activity and Use Limitations; Certified Vernal Pools; Potential Vernal Pools; NHESP Priority Habitats; NHESP Estimated Habitats; NHESP Restricted Data; Wild & Scenic Rivers; NHD Hydrography; Census 2000 Streams; MADEP Hydrologic Connections; MADEP Wetlands; FEMA 100yr Floodplain; NRCS Hydric Soils; Public Water Supply; Zone II Wellhead Protection Area; Interim Wellhead Protection Area; Surface Water Protection Zones; Outstanding Resource Water; Areas of Critical Environmental Concern; Watershed Protection Act Zones; Ch. 91 Titlelands Jurisdiction; Article 97 Land; Landfills (Not/Capped, [Un]Lined, [In]Active, Closed)



Legend

Existing Structure	Field Delineated Waterbody*	100ft Buffer to Wetlands & Streams	DCR Owned Property
PIT Work	Field Delineated Wetland Line	100ft Buffer to BLSF	Parcel Boundary
Existing Overhead Line	Field Delineated Wetland*	100ft Buffer to Vernal Pools	Culverts
Right-of-Way	Estimated Stream Centerline	200ft Riverfront Area	Access Gates
Potential Access Road	Estimated Edge of Bank	Zone II Wellhead Protection Area	Fenceline
Alternate Access Road	Potential Vernal Pools	MHC Historic Point	Stone Walls
Field Delineated Stream Centerline	FEMA 100yr Floodplain*	MHC Historic Area*	Railroad

***Indicates Layers Set to Transparency**

Article 97 Lands

Municipal

1 inch = 100 feet
 0 50 100
 Feet

PIT MAINTENANCE PROJECT - C129 TRANSMISSION LINE
Environmental Resources Map

Franklin, MA
 Page 16 of 16

Sources: Esri, HERE, Garmin, Intermap, increment P Corp., GEBCO, USGS, FAO, NPS, NRCAN, GeoBase, IGN, Kadaster NL, Ordnance Survey, Esri Japan, METI, Esri China (Hong Kong), (c) OpenStreetMap contributors, and the GIS User Community