



NEW TEXTILE RECYCLING PROGRAM

**Franklin Town Council
September 18, 2019**

Brutus Cantoreggi, Public Works Director
Chris White, Solid Waste Coordinator

CURBSIDE PICKUP ON YOUR TRASH DAY



WHY RECYCLE TEXTILES???

THE LIFE CYCLE OF SECONDHAND CLOTHING



What happens to your recycled used clothing?

Once a resident determines that their clothing, shoes, handbags, or household textiles have reached the end of their useful life, materials are collected by Simple Recycling and collected clothing is sorted and graded for condition.

10-20%
Top quality materials are sold to local thrift stores where they create access to low cost clothing and jobs for local residents.

80%
The vast majority of clothing collected is not resaleable in the U.S. so it is further sorted for international export or broken down for raw materials.

45%
Reused and Repurposed
Majority is exported as secondhand clothing.

30%
Recycled and Converted
Reclaimed wiping rags are used in various ways as industrial and residential absorbents.

20%
Recycled into Fiber
Post-consumer fiber is used to make home insulation, carpet padding, and raw material for the automotive industry.

Only 5% ends up as waste.



Thrift industry employs nearly 100,000 workers in the U.S. with over \$1 billion wages paid. In addition, private sector recyclers create an additional 15,000 to 20,000 jobs nationally.²

The textile recycling process follows the conventional recycling maxim of
Reduce, Reuse, Recycle!

Sources:

¹ EPA 2009 Federal MSW waste study; 3.8 billion lbs. recovered divided by 2010

U.S. Census Population 310 million

² "Textile Recycling in the U.S." Report submitted to SMART by Dr. Jana Hawley Ph.D. Univ. of Missouri 2009

³ EPA 2009 Federal MSW waste study.

ITEMS THAT ARE COLLECTED

Some of the items accepted in the new Pink Bag recycling program.

- Used or New Clothing (men's, women's, children's)
- Boots & Shoes
- Bedding (sheets, pillow cases, blankets, comforters)
- Belts & Ties
- Books
- Bras
- Coats & Jackets
- Fashion Accessories
- Handbags & Purses
- Hats & Gloves
- Kitchenware
- Linens
- Pillows
- Sandals & Slippers (in pairs)
- Socks (single or in pairs)
- Stuffed Animals
- Table Linens
- Tools
- Towels



WITHOUT SIMPLE RECYCLING, 85% OF ALL CLOTHING ENDS UP IN LANDFILLS, ONLY 15% GETS RECYCLED OR DONATED

STEP 1 Place this bag in your closet and fill it with clothing & shoes

STEP 2 Set your bags out bright and early on your regular collection day

STEP 3 Our friendly drivers will pick up your bags and leave replacement bags behind

Tree Warden Update

Franklin Town Council
September 18, 2019



Brutus Cantoreggi, Tree Warden

rcantoreggi@franklinma.gov

What is a Tree Warden?

- Massachusetts General Laws Chapter 87
 - <https://malegislature.gov/laws/generallaws/parti/titlexiv/chapter87>



Qualifications of a Tree Warden?

- A tree warden may be either elected by the people or appointed by the city or town.
- The Tree Warden's responsibility is to oversee the care, maintenance, or removal of all public shade trees.
- As both manager and advocate, the tree warden must protect the trees and, where necessary, protect the public from the trees.
- The position of tree warden requires [qualified training](#) in arboriculture, the science of tree care.
- A tree warden should also have good communication skills for dealing with the public, municipal department heads, and local politicians.



Tree Warden Duties

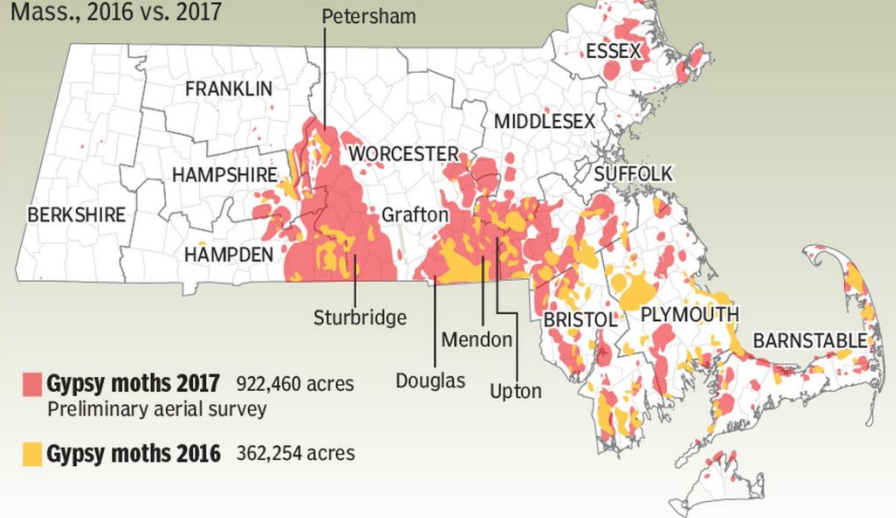
- Pruning of trees for safety and health
- Removal of trees that are dead or dying (from storms, insects, disease, or old age)
- Identification of appropriate planting sites
- Planting new trees
- Creation or updating of a tree inventory, often on computer
- Assessment of trees for potential hazards to public safety
- Oversight of utility arboricultural operations
- Preparation of budget presentations
- Inspection of contracted tree work
- Conduct of public meetings and

Hurting / Damaging / Killing our Trees



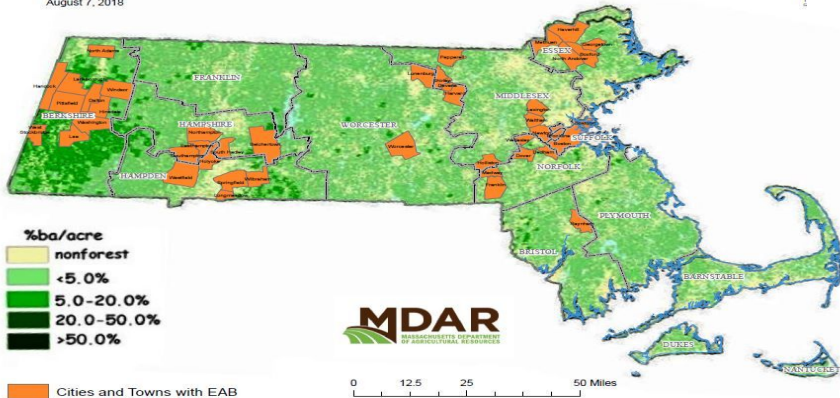
Acres damaged by gypsy moths

Mass., 2016 vs. 2017



Confirmed Emerald Ash Borer Infestations in Massachusetts

August 7, 2018



Source: Massachusetts Dept. of Conservation and Recreation Forest Health Program

DON LANDGREN JR./T&G STAFF



Hurting / Damaging / Killing our Trees



Asian Longhorned Beetle



Maple, Willow, Birch and Horsechestnut Trees

Tree “Public Right of Way”



Private Property Tree



Oak Trees



Ash Tree



Utility Maintenance



Going Forward



Hazard Tree Inventory



Public Education / Outreach

The image shows a screenshot of a Facebook group page for "Millis Public Forum". The page layout includes a top navigation bar with the Facebook logo, the group name, a search bar, and user avatars for "Brutus", "Home", "Create", and notification icons. On the left, a sidebar lists group categories: "Public group", "About", "Discussion" (highlighted), "Chats", "Announcements", "Members", "Events", "Videos", "Photos", "Files", "Recommendations", and "Shortcuts" with links to "Power Travel", "Franklin Department...", "Blueberry Hollow Farm", "Millis Yard Sale", "North East Parrot H...", and "All about Franklin".

The main content area features a post by "Leslie Beaumont Paul McDaid" with the text "in Millis 7748040269- incredible work!". Below it is a post by "Anne Marie Holohan" dated "July 21 at 1:32 PM" with the text "Millis Police & Fire to the rescue!!!!!! What a mess!!! Luckily it didn't hit anyone." This post includes two side-by-side photographs showing a residential street with a large tree that has been cut down or severely damaged, with a police car and a fire truck visible in the background.

Below the photos, there are reaction icons (thumbs up, surprised face, sad face) and a comment by "Bonnie Hilton, Joanne LaMacchia McCarter and 30 others" with "8 Comments". There are also "Like", "Comment", and "Share" buttons. A "View 1 more comment" link is visible, followed by a comment from "Joanne Ferguson" stating "a lot of dead trees around".

On the right side of the page, there is a "DESCRIPTION" section stating "Millis Public Forum is an independent, grassroots group, a place... See More". Below this is the "GROUP TYPE" section, which is "General". The "LOCATION" section shows a map icon and the text "Millis, Massachusetts", with a note that "This location is set based on your group's name".

Further down, there is a "CREATE NEW GROUPS" section with the text "Groups make it easier than ever to share with friends, family and teammates." and a "Create Group" button. Below that is a "RECENT GROUP PHOTOS" section with a "See All" link and three thumbnail images. The bottom right section is "Suggested Groups" with a "See All" link and a large blue image.

Specialty Tree Removal Service



Notify Private Property Owners

April 10, 2018

SENT CERTIFIED MAIL

Mr. Larry XXXXXXX

RE: Notice of Tree Hazard at XXXXXX Street, Franklin, MA

To whom it may Concern:

It has come to my attention that there is a tree on your private property that is/are potential hazard(s), meaning they are failing and/or dead and may fall on to the "public right of way" (Town of Franklin property). I did mark the trees with an orange dot last week..

As the Town's Tree Warden, it is my responsibility to inform you that if this tree was to fall from your property onto the public right of way, you will be held responsible for all costs associated with removal of the tree from the area. Additionally, you may also be liable for damages and expenses incurred if this tree were to fall and damage other's personal property or strike and injure someone.

Where this tree is located on your private property, it is against the law for me to assist you in any way by using public personnel, resources or funding to remove any it.

While I do not have the legal authority to order you to remove tree, I strongly recommend that you do.

Feel free to contact me with any questions regarding this matter.

Respectfully,

Robert Cantoreggi
DPW Director

Cc: Jeff Nutting, Town Manager
Jamie Helen, Deputy Town Manager
Deacon Perrotta, Director of Operations
Carlos Rebelo, Highway and Grounds Superintendent
Mark Cerel, Town Attorney
File

Replanting Program



Questions???

