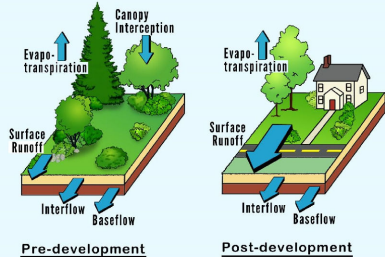




## What Is Stormwater?

Stormwater is rainwater and snow melt that runs off buildings, streets, and lawns and carries dirt, oil, trash and other pollutants into the storm drains. This runoff is discharged into local streams and rivers. It is estimated that over 60% of water pollution comes from stormwater discharge.



## What Is The Problem?

Like many towns in Massachusetts, the Town of Franklin faces significant stormwater challenges through development, which disrupts the natural water cycle. Rainfall, which used to be naturally absorbed where it fell by plants and soil, is now entering local waterways and eventually the Charles River as stormwater runoff.

## What Is Franklin Doing?



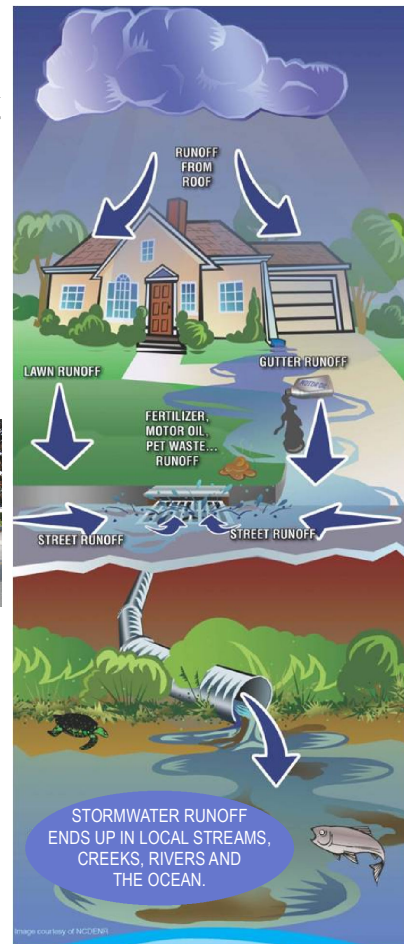
Franklin has been working with The Great American Rain Barrel Company each spring and fall to offer residents rain barrels at a discounted price. This is a great way to help residents make a positive impact on their stormwater impact.

The Franklin Department of Public Works continues to include stormwater upgrades in each infrastructure improvement project. These improvements often include building new rain gardens, installing tree wells and replacing/updating old catch basins and drainage pipes.



## Did You Know?

- Franklin has 137 miles of drainage pipes throughout town and 5,835 catch basins.
- Franklin disposes of 800+ tons of sediment and trash every year from catch basin cleaning and street sweeping.
- The Highway Department sweeps every street at least once a year, removing sediment and debris which would otherwise find its way into local streams and waterways.



*Together we can keep our stormwater clean!*



Franklin Department of Public Works  
257 Fisher Street, Franklin MA 02038



# Together we can keep our stormwater clean!

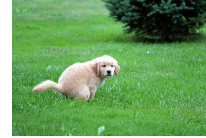
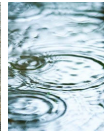


Franklin Department of Public Works  
257 Fisher Street, Franklin MA 02038

TOWN OF FRANKLIN

## What Can Residents Do To Prevent Stormwater Pollution?

- **Pick up the poop!** Dog waste carries high levels of harmful E. coli bacteria and is a major contributor to local water pollution.
- **NEVER** dump anything down storm drains. Take unwanted chemicals and paint to a hazardous waste collection site.
- Direct downspouts away from paved surfaces.
- Prevent irrigation systems from spraying water onto pavement. Water that ends up on pavement contributes to polluted runoff and is wasted.
- Don't pile yard waste near streams, wetlands or storm drains.
- Start a compost pile.
- Use fertilizers sparingly and sweep up driveways, sidewalks and roads.
- Use a rain barrel to collect rain water for lawn and garden watering.
- Never use a hose to wash down the driveway or sidewalk. This washes pollutants into storm drains and is a waste of water.



- Collect all used oil, antifreeze and other vehicle fluids in containers with tight fitting lids and recycle at a local service station.
- Avoid over salting walkways and driveways in the winter and use non-toxic products whenever possible.
- When washing vehicles, park in a spot where the soap will run off onto the grass rather than into the street and down the storm drain.
- Never clean or pressure wash the undercarriage of a car at home. The oil, grease and other pollutants from this activity can contaminate shallow groundwater.

**Thank you for caring about Stormwater in Franklin!**

## LEARN MORE!

Interested in learning more about stormwater challenges and how you can help? Attend the next public outreach presentation!

**May 22, 2019** | 5-6 pm | Franklin Municipal Building  
355 East Central St, Franklin MA 02038

For more information on Franklin's Stormwater Management Program:

Brutus Cantoreggi, Department of Public Works Director  
e | [dpw@franklinma.gov](mailto:dpw@franklinma.gov) p | 508.553.5500  
w | [www.franklinma.gov/stormwater-division](http://www.franklinma.gov/stormwater-division)

