

COMPLETE STREETS



Franklin DPW

Robert A. Cantoreggi, Public Works Director
Michael Maglio, Town Engineer

September, 22nd, 2021

Complete Streets

- A Complete Street is one that provides safe and accessible options for all travel modes - walking, biking, transit and vehicles – for people of all ages and abilities.



Complete Streets Funding Program

- Program Run by MassDOT
 - Provides technical assistance
 - Funding source for construction projects
 - Up to \$400,000 per year

Program Tiers

- Tier 1

- Register with MassDOT, Participate in Training, and Develop a Complete Streets Policy

- Tier 2

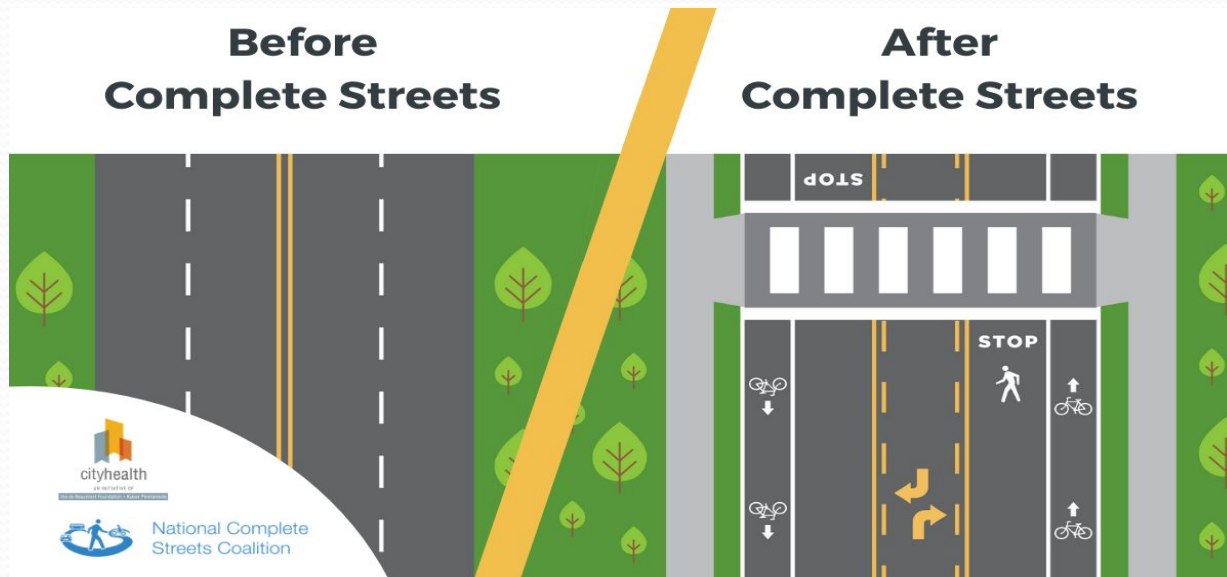
- Develop a Complete Streets Prioritization Plan
(MassDOT has awarded Franklin a \$38,000 grant to complete)

- Tier 3

- Apply for individual construction project grants, MassDOT issues Project Approval and Notice to Proceed

Benefits of Complete Streets

- Promotes safer and more convenient access and travel for all users and people of all abilities
- Contributes toward the safety, health, economic viability and quality of life in the community
- Provides better connectivity for travel between home, school, work, recreation and retail destinations



Complete Streets Improvements

- May be large scale:
 - Corridor-wide improvements that include a separated bicycle lane, or new traffic signals that address pedestrian and bicycle movements
- May be small scale:
 - Pavement markings to delineate shared bike lanes, or upgrading accessible curb ramps

The design of a Complete Street should incorporate improvements that fit with the need and within the character of a community

Challenges

- Physical constraints
- Available right-of-way
- Traffic volumes and speeds



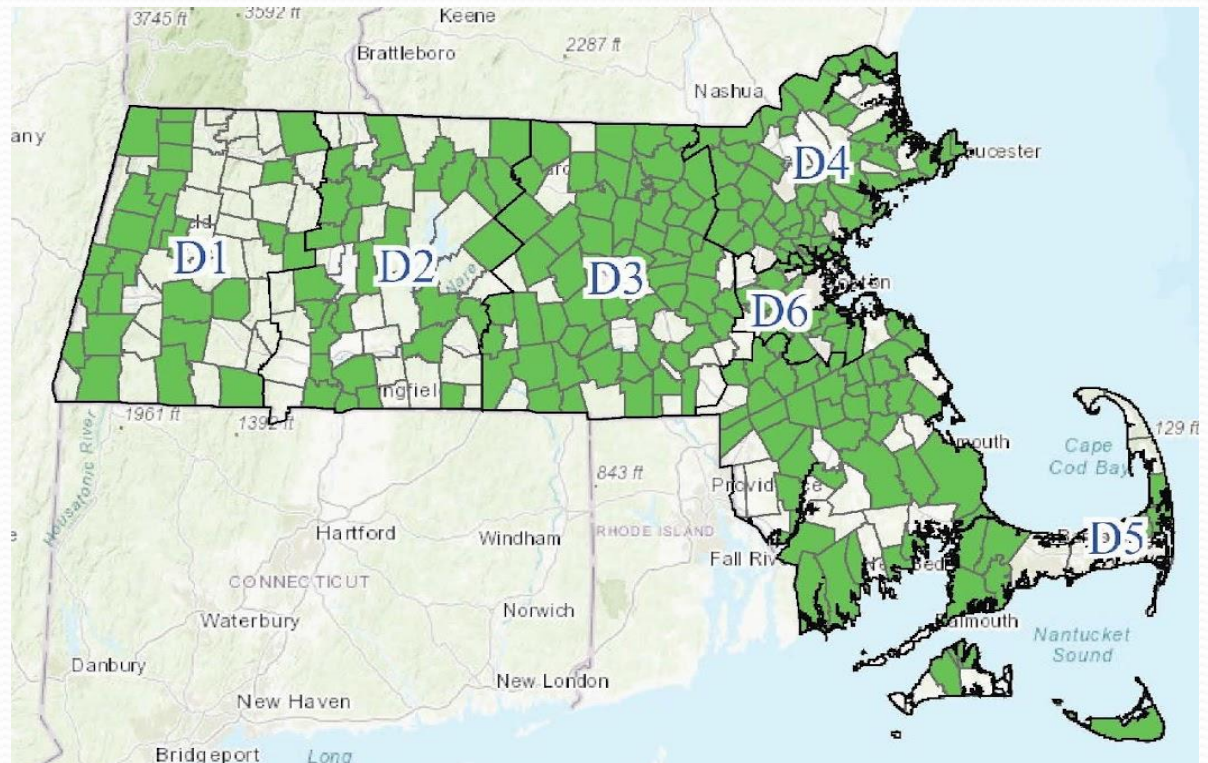
Types of Eligible Projects

- Pedestrian Facilities
 - New sidewalks, sidewalk repairs, accessible curb ramps
- Traffic & Safety
 - Traffic calming, shoulder widening, radar speed signs
- Transit Facilities
 - Secure bicycle parking, signage, transit shelters
- Bicycle Facilities
 - Shared use paths, bicycle lanes, bicycle parking fixtures

Participating Communities

- ✓ 230 Communities have adopted a Complete Streets policy

* An additional 22 communities have registered with MassDOT to participate in the program



Next Steps

- Develop a Complete Streets Prioritization Plan
 - Prioritized list of potential projects to be submitted to MassDOT in September



Questions?