

# **Parcel No. 1**

.19 ACRE(S) of land , more or less, situated on **SOUTHGATE ROAD** and shown as Map and Parcel 235-077-000-000 on the Franklin Assessors' map. Tax taking is dated June 6, 2008 and recorded with the Norfolk County Registry of Deeds at Book 25854, Page 306 and Affidavit to Foreclose Tax Title recorded December 29, 2015 at Book 33752, Page 260. Assessed owner: DAV-MAR INC

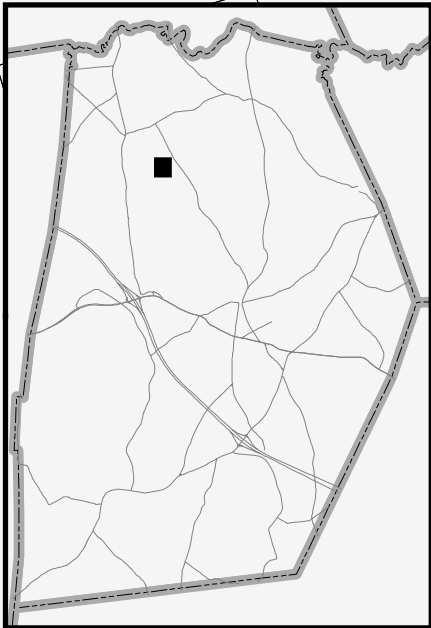
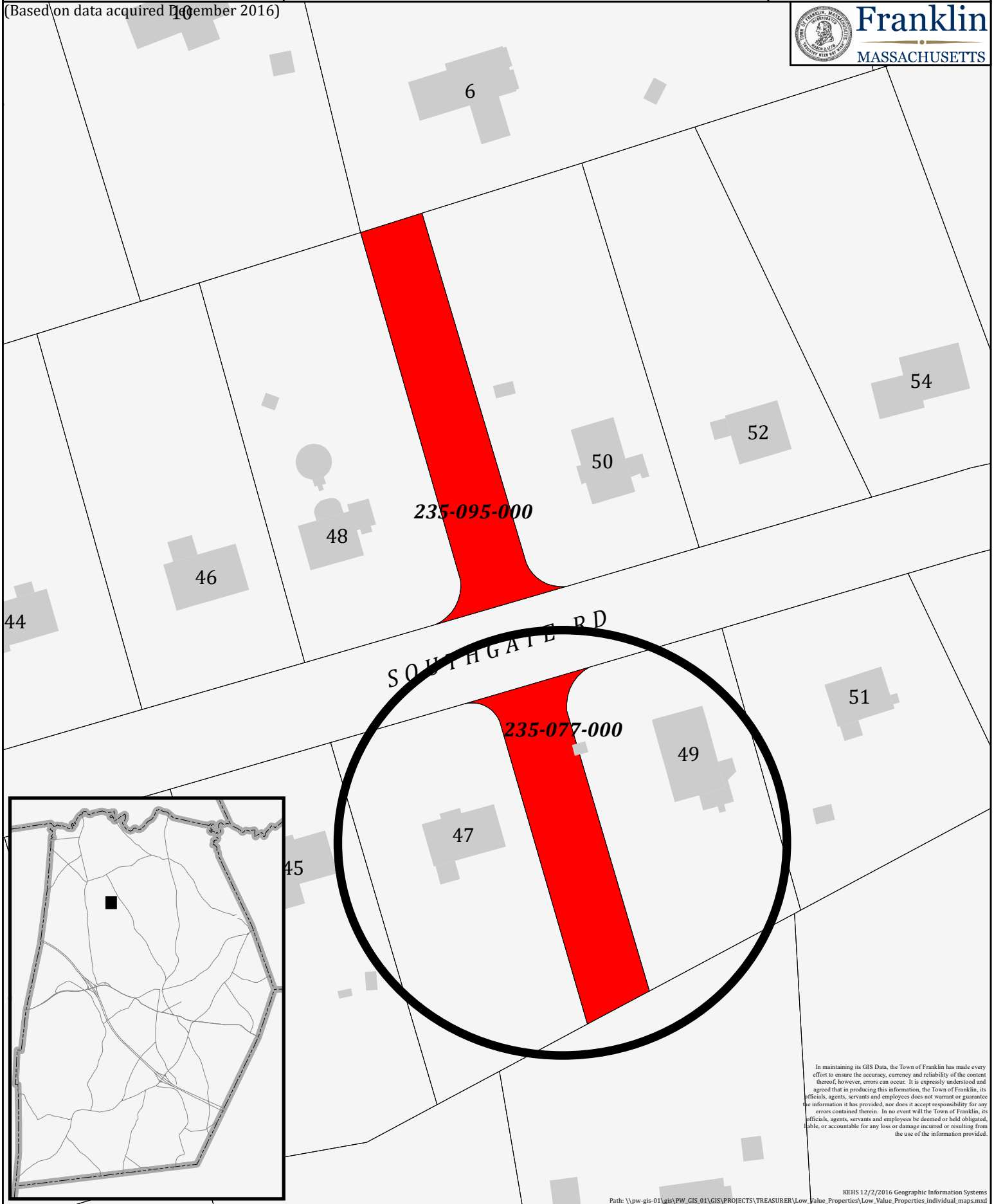
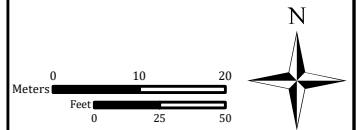
**Deposit required-\$750**

# LOW VALUE PROPERTIES

(Based on data acquired December 2016)

-  Low Value Property
-  Town Owned Land
-  Structure

 Parcel line



In maintaining its GIS Data, the Town of Franklin has made every effort to ensure the accuracy, currency and reliability of the content thereof, however, errors can occur. It is expressly understood and agreed that in producing this information, the Town of Franklin, its officials, agents, servants and employees does not warrant or guarantee the information it has provided, nor does it accept responsibility for any errors contained therein. In no event will the Town of Franklin, its officials, agents, servants and employees be deemed or held obligated, liable, or accountable for any loss or damage incurred or resulting from the use of the information provided.





235-077

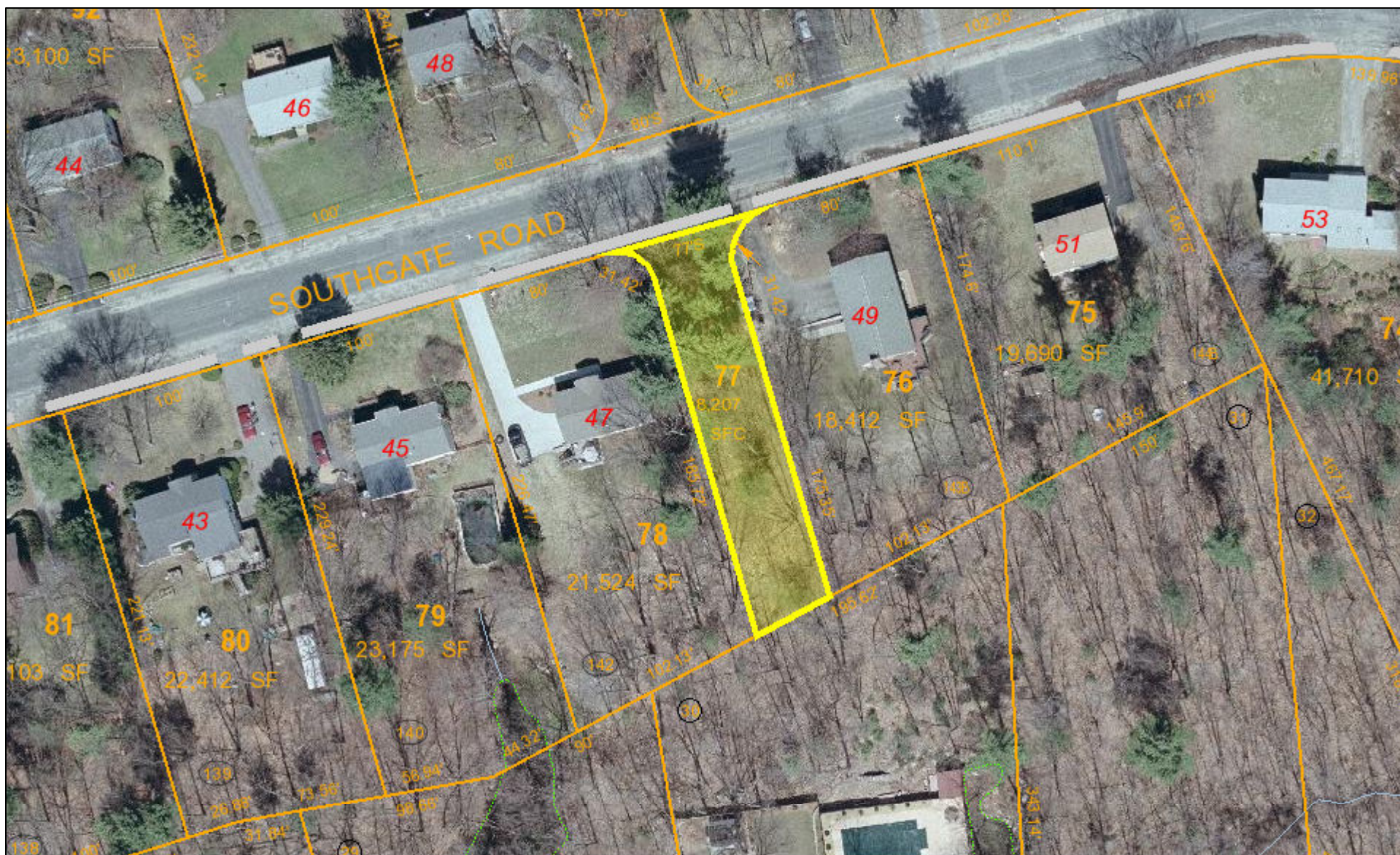
Franklin, MA



January 25, 2017

1 inch = 67 Feet

www.cai-tech.com



This information is believed to be correct but is subject to change and is not warranted.





