

Parcel No. 2

.22 ACRE(S) of land, more or less, situated on **SOUTHGATE ROAD** and shown as Map and Parcel 235-095-000-000 on the Franklin Assessors' map. Tax taking is dated April 16, 2009 and recorded with the Norfolk County Registry of Deeds at Book 26591, Page 30 and Affidavit to Foreclose Tax Title recorded December 29, 2015 at Book 33752, Page 260. Assessed owner: DAV-MAR INC

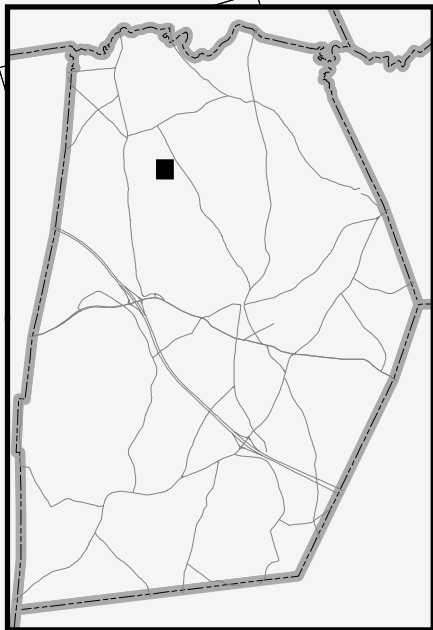
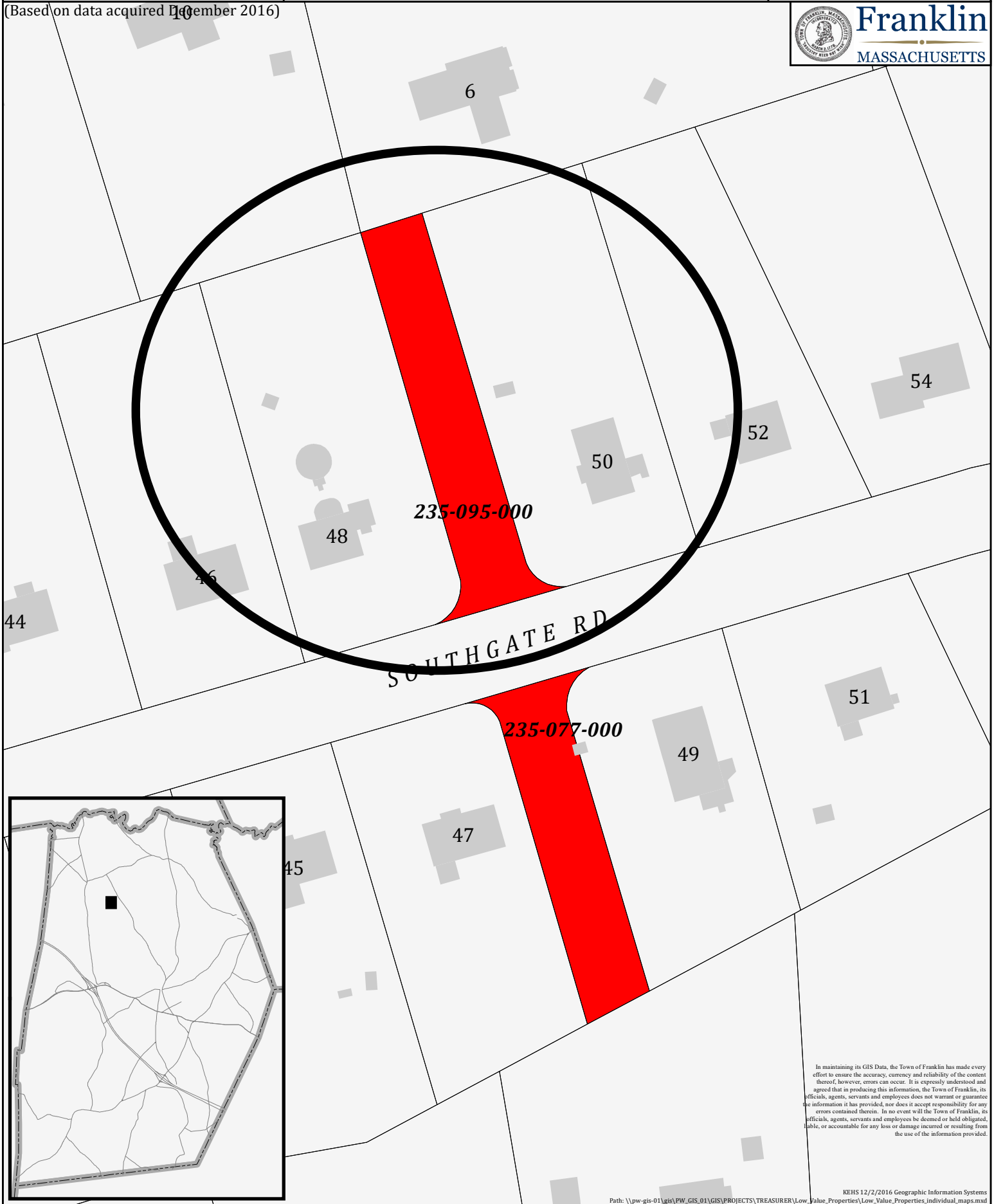
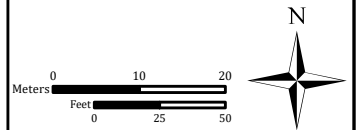
Deposit required-\$500

LOW VALUE PROPERTIES

(Based on data acquired December 2016)

-  Low Value Property
-  Town Owned Land
-  Structure

 Parcel line



In maintaining its GIS Data, the Town of Franklin has made every effort to ensure the accuracy, currency and reliability of the content thereof, however, errors can occur. It is expressly understood and agreed that in producing this information, the Town of Franklin, its officials, agents, servants and employees does not warrant or guarantee the information it has provided, nor does it accept responsibility for any errors contained therein. In no event will the Town of Franklin, its officials, agents, servants and employees be deemed or held obligated, liable, or accountable for any loss or damage incurred or resulting from the use of the information provided.



235-095

Franklin, MA



January 25, 2017

1 inch = 67 Feet

www.cai-tech.com



This information is believed to be correct but is subject to change and is not warranted.

SKETCH