

# **Parcel No. 3**

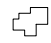
.317 ACRE(S) of land, more or less, situated on **MADISON AVENEUE** and shown as Map and Parcel 242-036-000-000 on the Franklin Assessors' map. Tax taking is dated June 6, 2008 and recorded with the Norfolk County Land Court Document Number 1155364 and Affidavit to Foreclose Tax Title recorded December 23, 2015 Document Number 1344491. Assessed owner: **MAPLECREST DEVELOPMENT INC.**

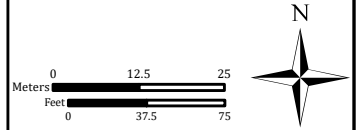
**Deposit required-\$1,000**

# LOW VALUE PROPERTIES

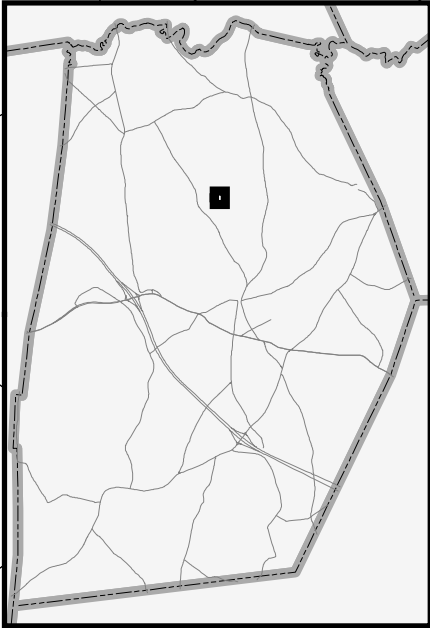
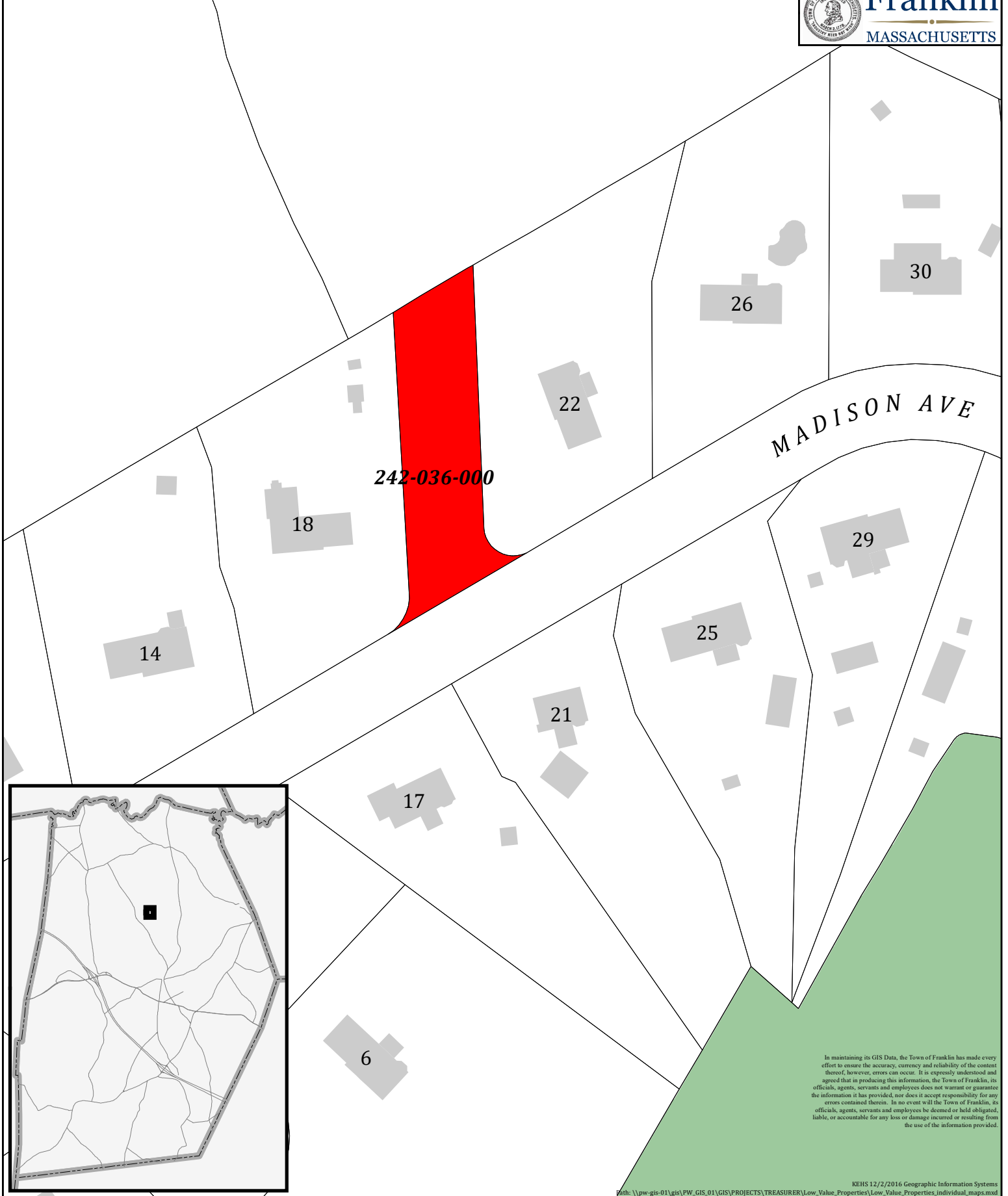
(Based on data acquired December 2016)

-  Low Value Property
-  Town Owned Land
-  Structure

 Parcel line



**Franklin**  
MASSACHUSETTS



In maintaining its GIS Data, the Town of Franklin has made every effort to ensure the accuracy, currency and reliability of the content thereof, however, errors can occur. It is expressly understood and agreed that in producing this information, the Town of Franklin, its officials, agents, servants and employees does not warrant or guarantee the information it has provided, nor does it accept responsibility for any errors contained therein. In no event will the Town of Franklin, its officials, agents, servants and employees be deemed or held obligated, liable, or accountable for any loss or damage incurred or resulting from the use of the information provided.





242-036

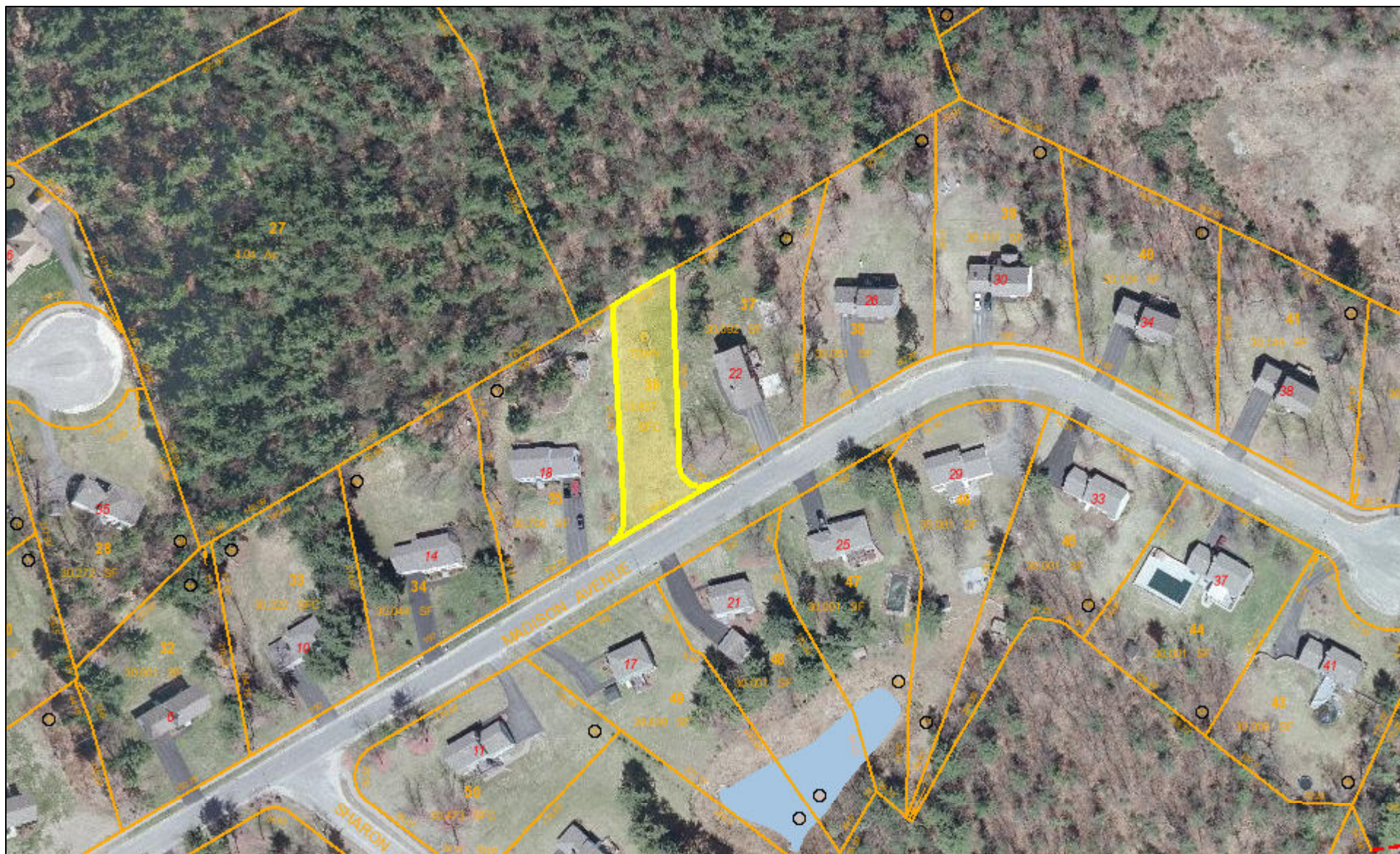
Franklin, MA



January 25, 2017

1 inch = 134 Feet

[www.cai-tech.com](http://www.cai-tech.com)



This information is believed to be correct but is subject to change and is not warranted.





## SKETCH

A photograph of a residential property. In the foreground, there is a paved asphalt road with a concrete curb. Behind the curb is a lawn area with some dry grass. A large, dense evergreen tree, possibly a spruce or fir, is the central focus. To its left and right are other trees, including some bare deciduous trees and smaller evergreens. The background shows a clear blue sky and more trees on a hillside.