



# Town of Franklin

## Town Wide Open Space Update

Jamie Hellen, Town Administrator  
April 6th, 2021  
Community Preservation Committee

[www.franklinma.gov](http://www.franklinma.gov)

# Open Space Stabilization Fund

- Current total is \$2,372,367. Stabilization Fund is aka a savings acct.
- In 2019 the Fund had \$1 million.
- Last year the Council voted in \$1.3 million into the fund total to have more cash in the bank anticipating a day coming when an expensive piece of land may come up. In one year, the town leadership more than doubled this savings account.
- Required  $\frac{2}{3}$  vote of the Town Council to appropriate..
- Current obligations are approximately \$275,000+/- for a project off Elm Street.

# Community Preservation Act

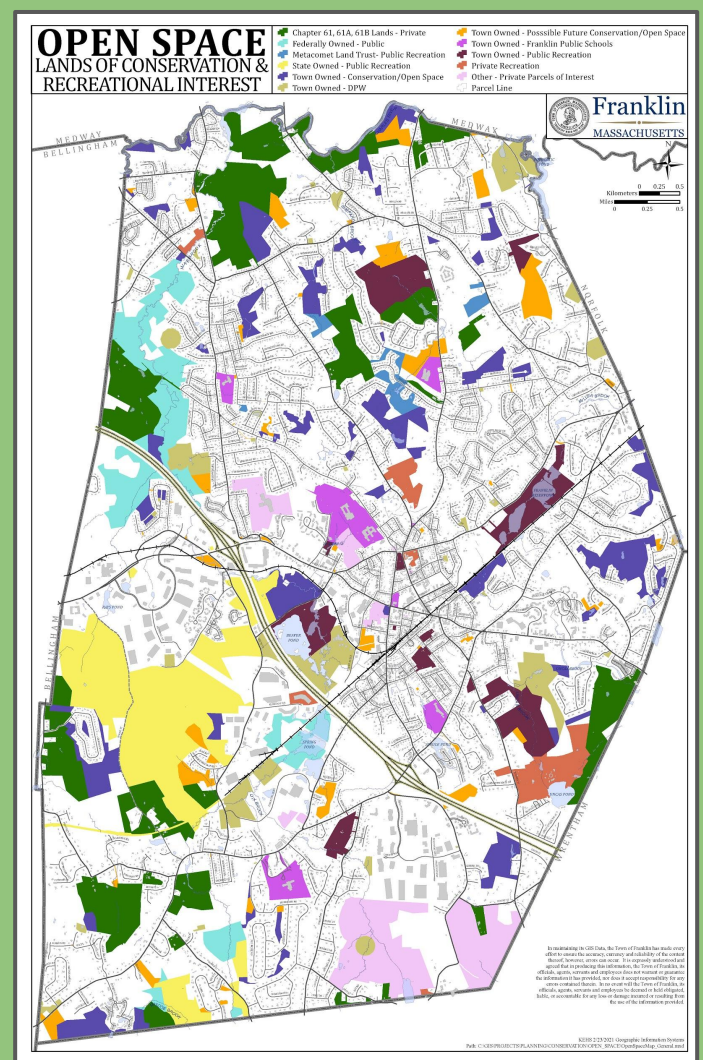
- The Town approved CPA this past year by a 60-40% vote margin. It is fair to say Open Space had a major role in this vote.
- July 1, 2021 assessment begins. Full year collection ends June 30, 2022.
- First available state match and full year of collecting revenue will be November 2022.
- Estimated annual collections will be \$1.329-\$1.7 million a year based on today's property values, state match percentage and current assumptions. Could be more or less.
- Backlog of demand for projects for CPA to address.

# Open Space Map

- The most recent open space map. Everything in color is either protected or could be protected.
- Many Chapter 61 parcels remain (green)
- 31 parcels over 10 acres
- Blue = Large areas of federal land
- Yellow = Franklin State forest, state land
- Orange, Purple, Pink = various municipal or protected private owned parcels

To view, click here:

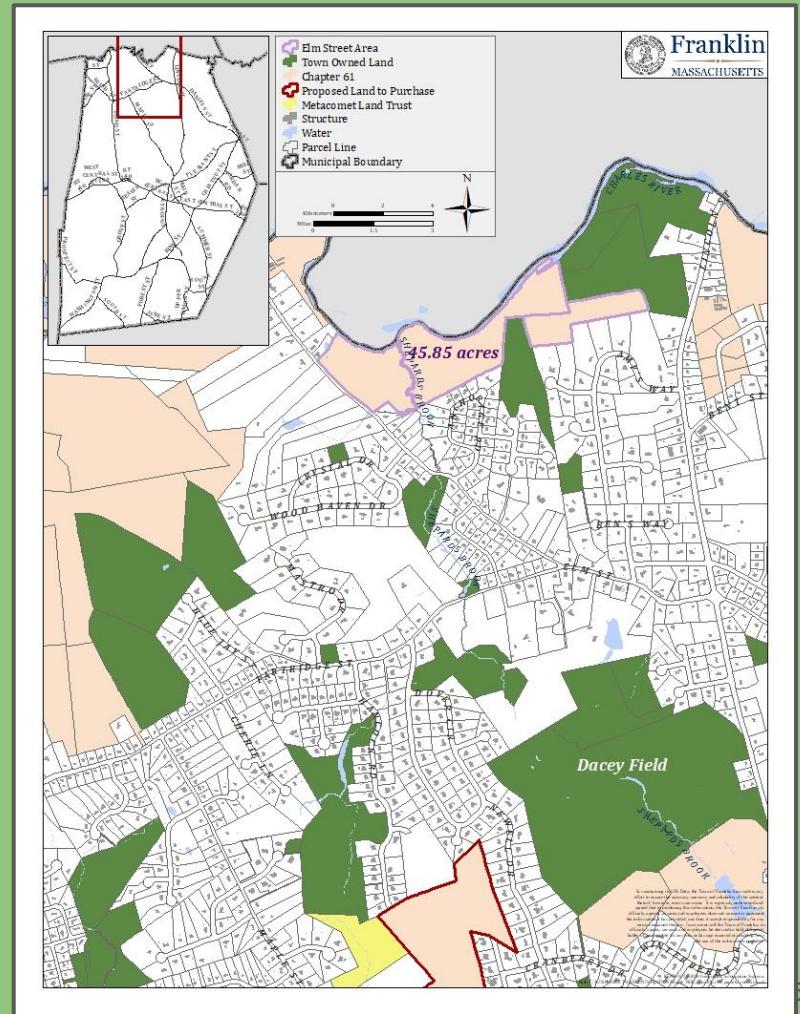
<https://www.franklinma.gov/gis-department/pages/maps-download-print>

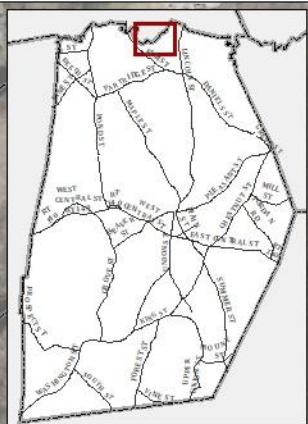


# Current Projects, #1

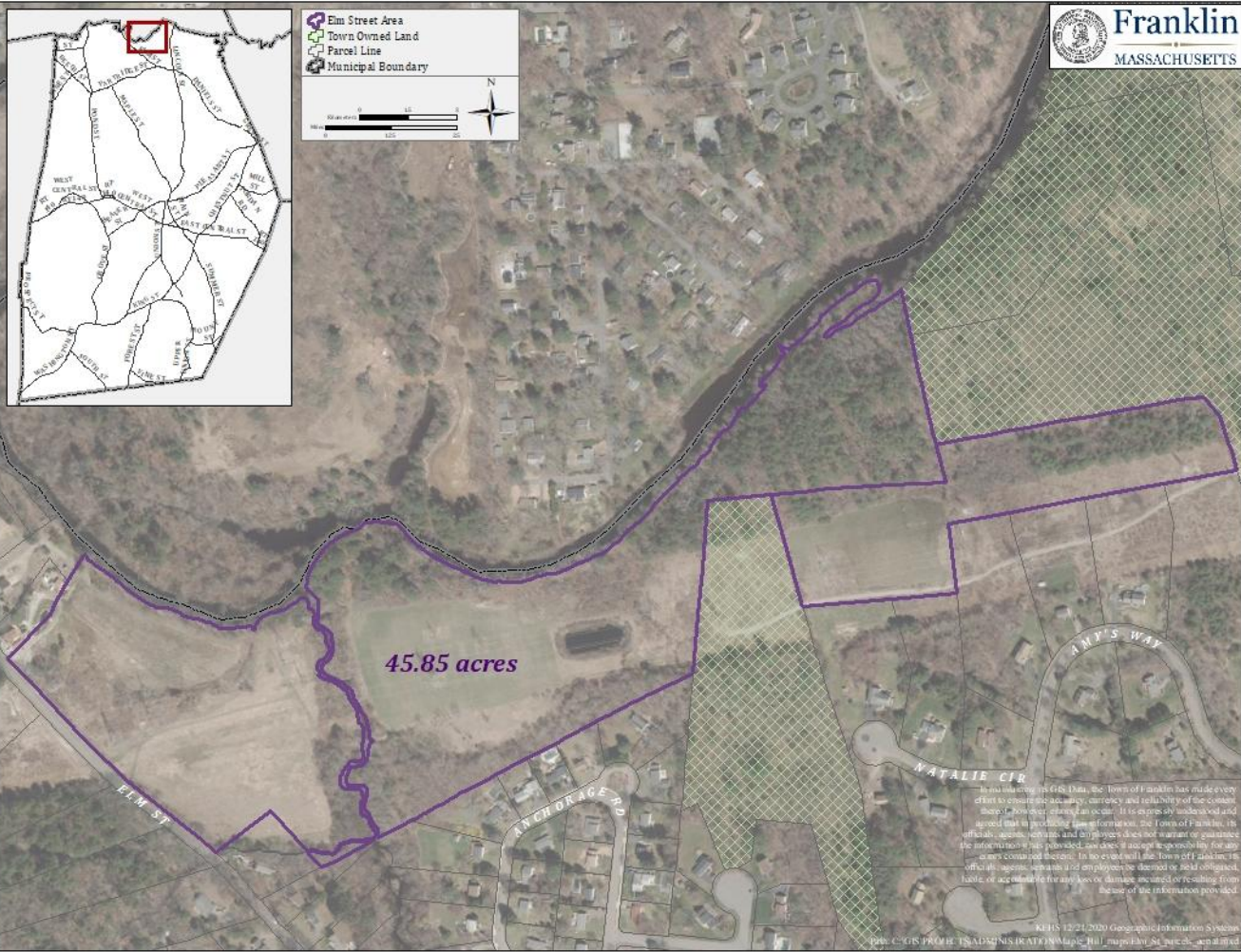
## Charles River frontage lots, slide 1

- Elm Street parcels are in an “APR”
- Approx. \$260,000
- Required state approval to buy these.
- Charles Riverfront parcels
- Staff hired BETA to Master plan the parcels.
  - Hope to establish community partnerships. Food Pantry, Schools...
  - Community Garden expansion.
  - Pollinator pastures, boat launches, trails and recreation patches and more...
  - Will likely RFP 3-10 acres and have active agriculture use. Agricultural Commission.
- This will take years to develop.
- Connects to Town owned land: Riverbend Park





Elm Street Area  
 Town Owned Land  
 Parcel Line  
 Municipal Boundary



In utilizing the GIS data, the town of Franklin has made every effort to ensure the accuracy, currency and reliability of the content. There is, however, always a risk of error. If it is discovered and reported that a problem exists, the Town of Franklin, its officials, agents, vendors and employees do not warrant or guarantee the information has been provided, nor does it accept responsibility for any errors contained therein. In no event will the Town or its officers, officials, agents, vendors and employees be deemed liable for any claims, losses or damages incurred or resulting from the use of the information provided.

# Current Projects, #1

## Charles River frontage lots, slide 3

- If acquired, staff will look to make a trail network that connects.
- Will look to do new signage, kiosks and other needs to improve Riverbend park.
- The Town has a very expansive vision for this area.



# Current Projects, #2

## SNETT Trail, slide 1

- SNETT Tunnel
- Construction complete Fall 2020
- Trail is now open and being used by thousands.
- Additional work will be done this year by DPW and the BFRTC also received \$10,000 grant money for trail work.
- State project, thank you to the legislative delegation!
- Next up: Grove Street to Union Street.







**10/30/20**

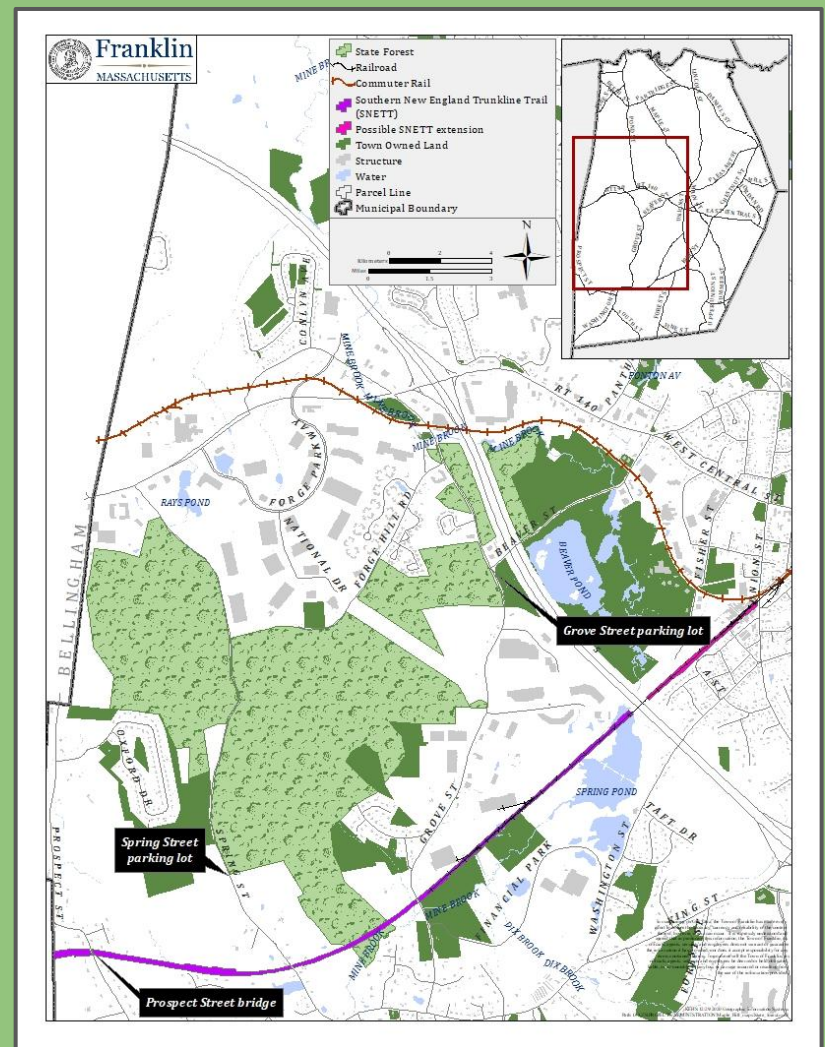
**SNETT**

**Ribbon Cutting**

# Current Projects, #3

## Franklin State Forest, slide 1

- State Forest Parking Lot
  - Thank you Rep Roy
- State Forest Parking Lot #2 on Spring Street (Solar)
- Long Term Goals: Decommission Spring Street for trail access and improved signage to state forest
- Work with Tom Ashton, DCR



# Current Projects, #3

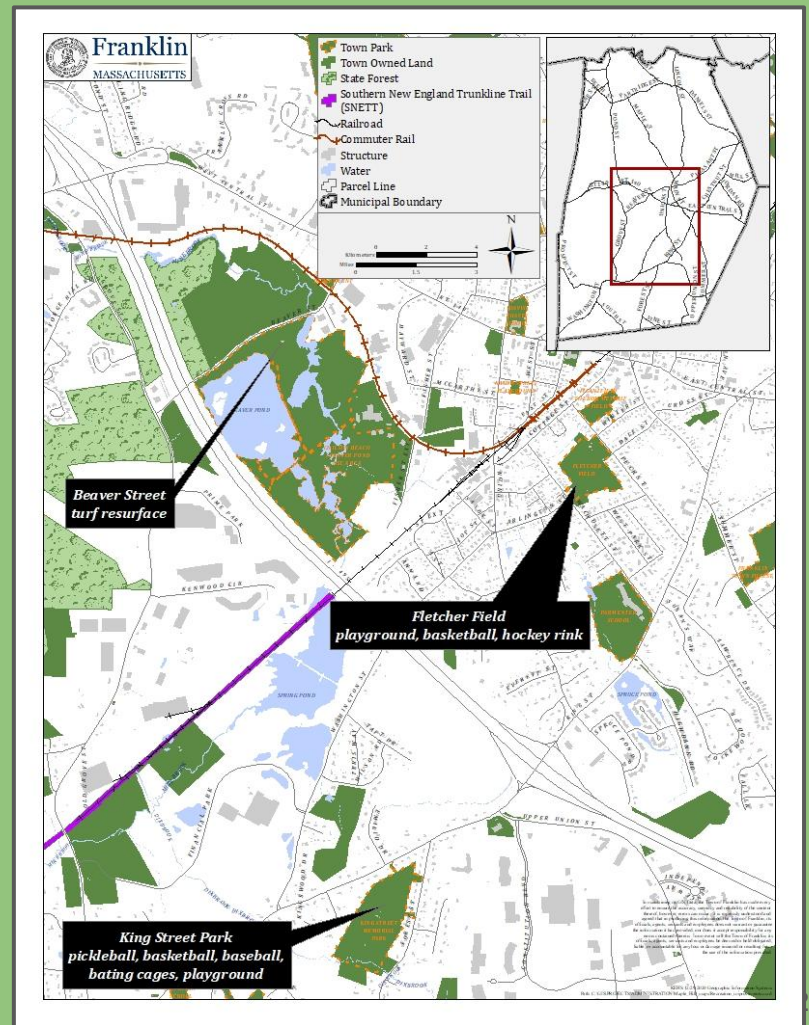
Franklin State Forest, slide 2



# Recent Projects, #4

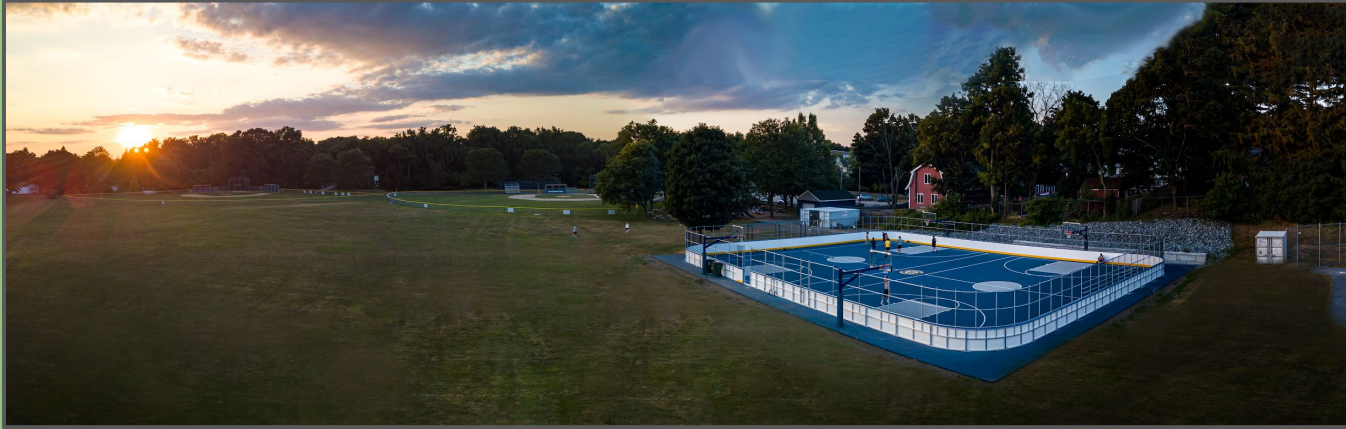
## Recreation Department, Parks & Playgrounds, slide 1

- Fletcher Field rink donated by the Boston Bruins Foundation
- King Street memorial Park renovation
  - Thank you to Senator Richard Ross, Senator Karen Spilka and Representative Jeff Roy.
- Turf Fields resurface 2018. \$1.5 million.
- Recreation Center 2017 on Beaver Street



# Current Projects, #4

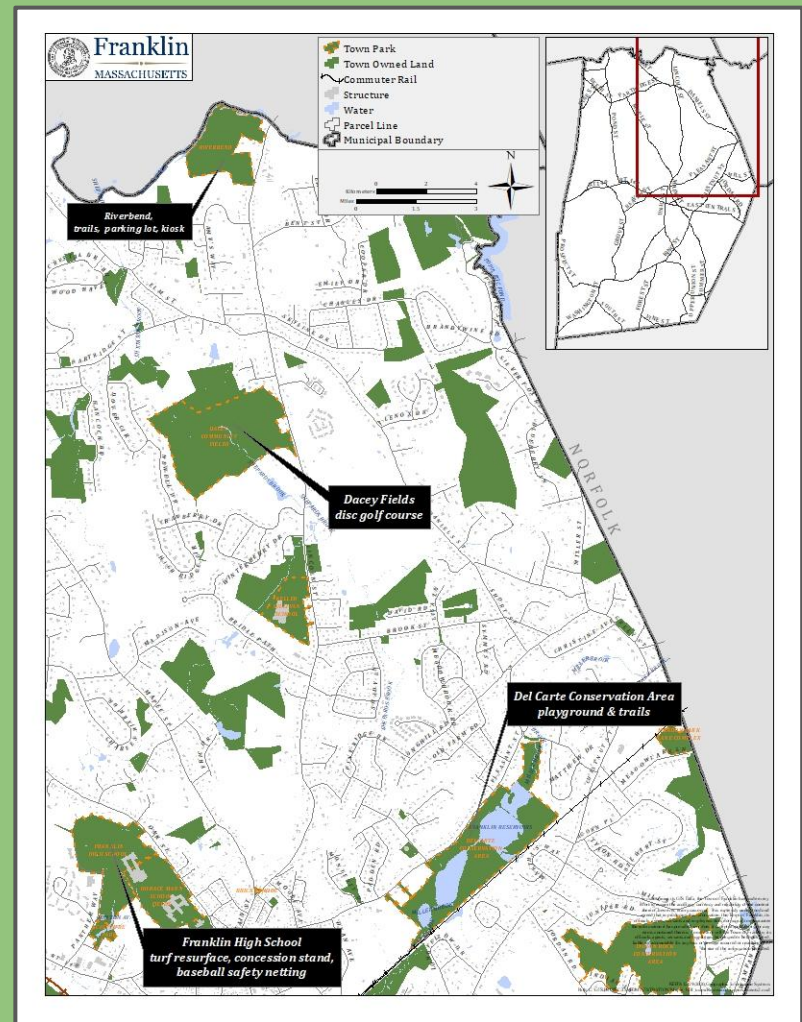
Recreation Department, Parks & Playgrounds, slide 2



# Recent Projects, #4

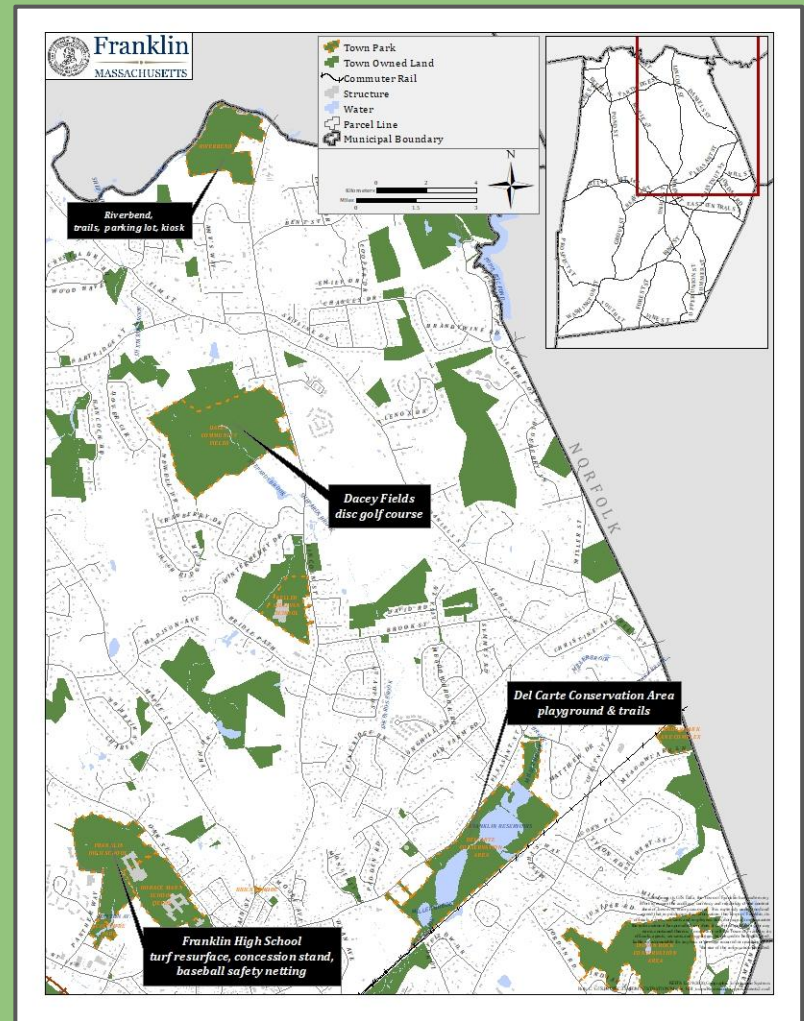
## Recreation Department, Parks & Playgrounds, slide 3

- Dacey Field Disc Golf Course
- Delcarte Conservation Area playgrounds, tables, amenities. Tri-County involvement.
- High School safety netting, concession stand and turf replacement
- Riverbend Park.
- Next up: Nason Street Tot Lot, Multiple playground investments, 5-year capital plan
- I would envision at least one project a year from CPA to recreation.



# Current Projects, #4

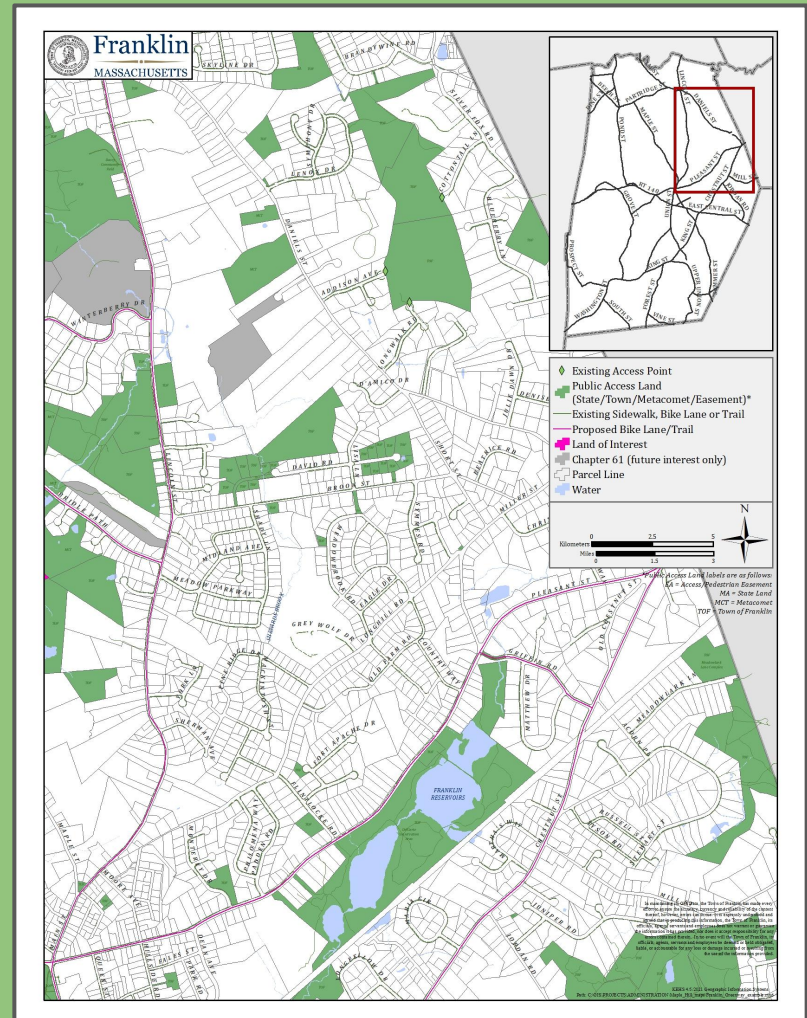
## Recreation Department, Parks & Playgrounds, slide 4



# Current Projects, #5

## The Franklin Greenway

- “Franklin Greenway”
- Develop an “Emerald Necklace” system within town to connect major areas and parks through bike lanes, sidewalks, pedestrian activities, historical tours, etc.
- Create a more integrated, coordinated system of transportation and recreation.
- Complete Streets Master Plan in progress. April 7th Town Council vote.





# 2016 Open Space Plan

- The Plan is here: [2016 Open Space Plan](#)
- Five main goals
  - Increase open space awareness.
  - Preserve and enhance town owned spaces
  - Maximize recreational opportunities
  - Protect natural, historical, and cultural resources
  - Preserve & Protect town water resources
- Achieved all five goals through some of the stated plan objectives (CPA) and other projects not on the list (Ag Comm)
- Will require an update in 2 years. Required approval by the state to be eligible for grants.
- CPA Funds can be used for this plan update.

## TOWN OF FRANKLIN 2016 OPEN SPACE & RECREATION PLAN

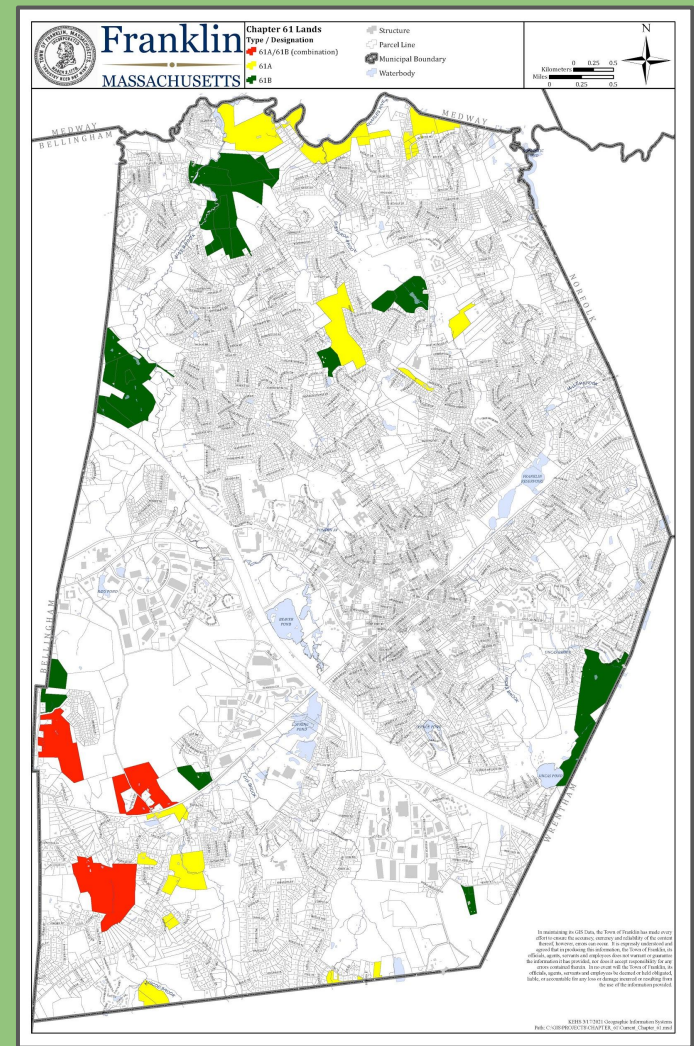


Prepared by:  
Franklin Conservation Commission with the assistance of:  
Franklin Department of Planning & Community Development

# Chapter 61

## Chapter 61 Status, slide 1

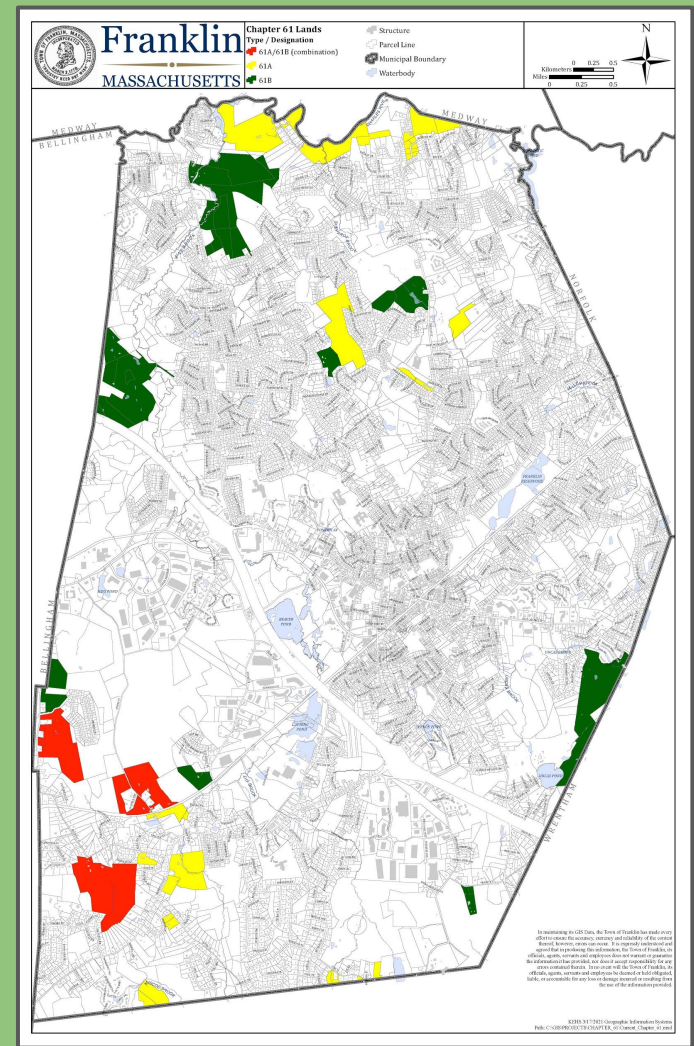
- Chapter 61 (Forestry), 61A (Agriculture, productive woodland) and 61B (Recreation) provides certain property tax reductions to register land in return an enhanced protected status, but not permanent protected.
- Very convoluted law given its length of time in statute.
- Franklin has 58 parcels “under chapter”.
- The true number is approx 22 blocks of land.
- E.G. - Maplegate Country Club is in Chapter 61. Its four parcels, but one block of land. Koshivas Farm is 7 parcels, one block of land.
  - This reflects old time Northeast land fragmentation.



# Chapter 61

## Chapter 61 Status, slide 2

- There are a handful of blocks remaining over 100 acres: Franklin Country Club, Maplegate Country Club, Country Day Camp, Schmidt Farm, Heno properties on Prospect Street.
- A handful of blocks remain of 20-100 acres: Calnan on Lincoln Street (abuts Dacey complex), Maple Street, Spring Street properties.
- A handful of blocks remain between 5-20 acres.
- These represent most of the last remaining large open spaces in Franklin.
- = 1,239 acres of Chapter Land in Franklin.



# Open Space Resources & Links

- 2016 Open Space Plan - [click here.](#)
- 2013 Master Plan - [click here.](#)
- 2020 Master Plan Update - [click here.](#)
- Charles River Meadowlands Report - [click here.](#)
- [Axis GIS](#) (all detailed property information)
- Town of Franklin Recreation Maps:
  - [Overall Recreation Story Map](#)
  - [Trail & Hiking Story Map](#)
  - [Open Space Map 2020](#)

