

# Franklin Department of Public Works

Winter Road Treatments  
&  
Snow Removal Costs Outline

# FY 2009 Update

- FY 2009 Approved Budget: \$694,500
- \$210,000.00 for salt
- FY 2009 Costs so far: \$692,490 (as of January 01/21/2009)
- Difference of \$2,010
- One salt shed empty, \$150K to fill

# Salting Issues





Salt is not available!!!  
SHED IS CURRENTLY EMPTY





# Mixing Rate

- Four Parts Salt
- One Part Sand





# Mixing Rate Concerns:

## STREET SWEEPINGS

### CATCH BASIN CLEANING



## Cost of *Salt* ?

- 2007 = \$54.00 per ton.
- 2008 + \$70.20 per ton.

***30% Increase***

**Suppliers Running Low**

## Cost of *Sand* ?

- 2007 = \$18.00 per ton.
- 2008 + \$20.00 per ton.

***10% Increase***

**Readily Available**



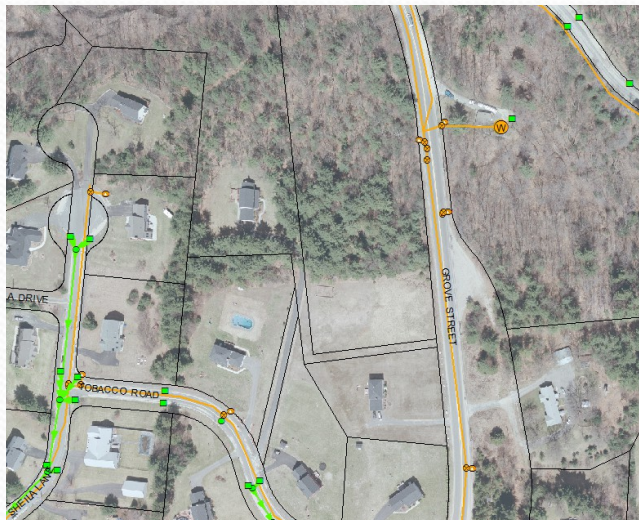
# Environmental Concerns

## Rising Salt Levels in Water Supply

### Well #3, Grove Street

D.E.P recommends < 20 ppm

- 2000 17.4 ppm
- 2008 43.8 ppm



## Stormwater Runoff to Surface Water





# Five Truck Route vs. Treating the Whole Town

## Treating the Whole Town:

- 15 Sanders
  - Eighteen Employees \$2,295.00
  - 400 Yards of Salt \$28,080.00
- Total: \$30,375.00**

## “Five Truck Route” Treats:

- 6 Sanders
  - Seven Employees \$7,24.80
  - 150 Yards of Salt \$7,371.00
- Total: \$8,216.60**



# Plowing Issues





**30 PIECES OF EQUIPMENT**  
**“On Road” at one time**

**D.P.W. Employees =**  
**\$900.00 per hour.**



**53 PIECES OF EQUIPMENT**

**CONTRACTOR COST =  
\$7450.00 per hour.**







Why not eliminate contractors  
for plowing?

# Cost Estimate of 6 Inch Storm

<u>Procedure</u>	<u>Cost</u>
Pre-Treat Town:	\$30,000
Plow for 8 Hours:	\$66,000
Sand Town after Plowing:	\$30,000
<b><i>Total Cost:</i></b>	<b><i>\$96,000</i></b>



1. All Public Roadways



# Snow Plow

2. School Facilities  
and  
Municipal Buildings



3. Sidewalks that have been  
identified as primary routes



# Salt is not Available at DPW Yard

- Safety of Employees and Residents
- DEP Regulations
- Liability Issues





Please don't put snow back in the road. (Bylaw Chapter 155-20)





# Mailbox Policy





# Clear Fire Hydrants



# CLOSING COMMENTS

- Public Expectations ???
- Safety
- Costs
- Public Perception of D.P.W.



# Think Summer!

