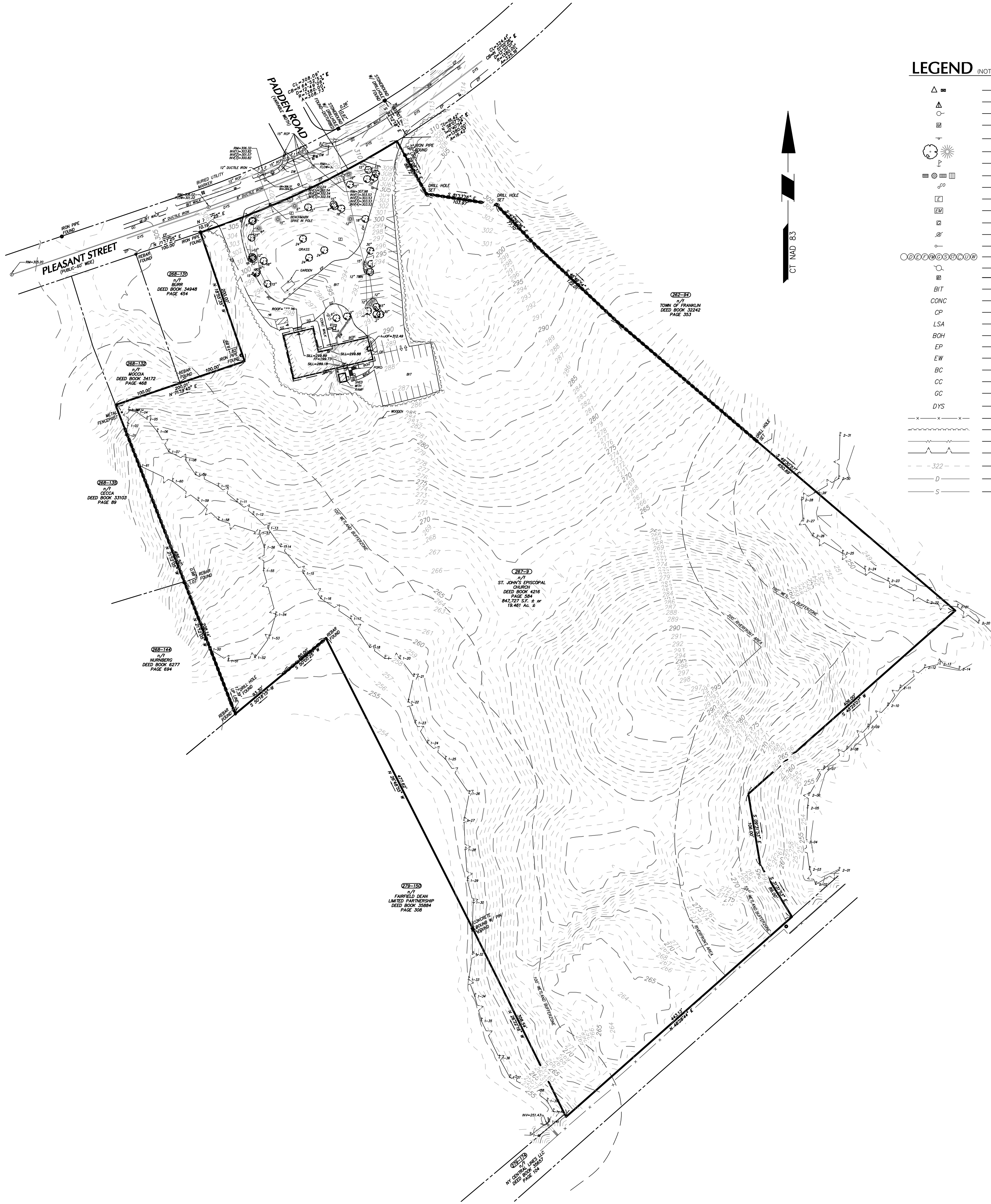


NOTES

1. THIS SURVEY IS BASED UPON AN ON THE GROUND SURVEY.
2. THE MERIDIAN OF THIS SURVEY IS REFERENCED TO MASSACHUSETTS STATE PLANE COORDINATE SYSTEM NAD 83 (EPOCH 2001). POSITION WAS DETERMINED BY GLOBAL NAVIGATION SATELLITE SYSTEMS (GNSS) AS PROVIDED BY HXGN SMARTNET CONTINUOUSLY OPERATED REFERENCE STATIONS (CORS).
3. ELEVATIONS SHOWN ARE REFERENCED TO THE NORTH AMERICAN VERTICAL DATUM OF 1988 (NAVD88) (GEOID 12B) AS DETERMINED BY GNSS
4. PLANIMETRIC AND TOPOGRAPHIC INFORMATION SHOWN HEREON HAS BEEN OBTAINED FROM GROUND SURVEYS BY LANGAN ENVIRONMENTAL AND ENGINEERING SERVICES. FIELD WORK COMPLETED DURING THE MONTH OF MAY 2021. PORTIONS OF THE SITE TOPOGRAPHY IS TAKEN FROM LIDAR DATA OBTAINED FROM THE NATIONAL OCEANIC AND ATMOSPHERIC ASSOCIATION.
5. AS PER THE NATIONAL FLOOD INSURANCE PROGRAM FIRM MAP ENTITLED "FRANKLIN COUNTY, MASSACHUSETTS PANEL 309 OF 430, MAP NUMBER 2502100309E, EFFECTIVE DATE JULY 17, 2012" THE PROJECT AREA IS IN ZONE X (UNSHADED).
6. UNLESS SPECIFICALLY NOTED HEREON, STORM AND SANITARY SEWER INFORMATION (INCLUDING PIPE INVERT, PIPE MATERIAL, AND PIPE SIZE) WAS OBSERVED AND MEASURED AT FIELD LOCATED STRUCTURES (MANHOLES/CATCH BASINS, ETC). CONDITIONS CAN VARY FROM THOSE ENCOUNTERED AT THE TIMES WHEN AND LOCATIONS WHERE DATA IS OBTAINED. DESPITE MEETING THE REQUIRED STANDARD OF CARE, THE SURVEYOR CANNOT, AND DOES NOT WARRANT THAT PIPE MATERIAL AND/OR PIPE SIZE THROUGHOUT THE PIPE RUN ARE THE SAME AS THOSE OBSERVED AT EACH STRUCTURE, OR THAT THE PIPE RUN IS STRAIGHT BETWEEN THE LOCATED STRUCTURES.
7. ADDITIONAL UTILITY (WATER, GAS, ELECTRIC ETC.) DATA IS SHOWN FROM FIELD LOCATED SURFACE MARKINGS (BY OTHERS), EXISTING STRUCTURES, AND/OR FROM EXISTING DRAWINGS.
8. UNLESS SPECIFICALLY NOTED HEREON, THE SURVEYOR HAS NOT EXCAVATED TO PHYSICALLY LOCATE THE UNDERGROUND UTILITIES. THE SURVEYOR MAKES NO GUARANTEES THAT THE SHOWN UNDERGROUND UTILITIES ARE EITHER IN SERVICE, ABANDONED OR SUITABLE FOR USE, NOR ARE IN THE EXACT LOCATION OR CONFIGURATION INDICATED HEREON.
9. ALL BUILDINGS AND STRUCTURES WERE LOCATED AND MEASURED AT GROUND LEVEL. THE SURVEYOR MAKES NO DETERMINATIONS OR GUARANTEES AS TO THE ABSENCE, EXISTENCE OR LOCATION OF UNDERGROUND STRUCTURES, FOUNDATIONS, FOOTINGS, PROJECTIONS, WALLS, TANKS, SEPTIC SYSTEMS, ETC. NO TEST PITS, EXCAVATIONS OR GROUND PENETRATING RADAR WERE PERFORMED AS PART OF THIS SURVEY.
10. PRIOR TO ANY DESIGN OR CONSTRUCTION, THE PROPER UTILITY AGENCIES MUST BE CONTACTED FOR VERIFICATION OF UTILITY TYPE AND FOR FIELD LOCATIONS.
11. THIS SURVEY IS NOT VALID WITHOUT THE EMBOSSED OR INKED SEAL OF THE PROFESSIONAL.



LEGEND

- (NOT SHOWN TO SCALE)
- DOOR
 - DOUBLE DOOR
 - FLAG POLE
 - MAILBOX
 - SIGN
 - TREE
 - WETLAND FLAG
 - CATCH BASIN
 - CLEANOUT
 - ELECTRIC BOX
 - ELECTRIC METER
 - GAS VALVE
 - GUY POLE
 - GUY WIRE
 - MANHOLE (TYPE AS LABELED)
 - POWER POLE
 - WATER VALVE
 - BITUMINOUS
 - CONCRETE
 - CONCRETE PAD
 - LANDSCAPED AREA
 - BUILDING OVERHANG
 - EDGE OF PAVEMENT
 - EDGE OF WALK
 - BITUMINOUS CURB
 - CONCRETE CURB
 - GRANITE CURB
 - DOUBLE YELLOW STRIPE
 - CHAINLINK FENCE
 - TREE LINE
 - OVERHEAD WIRE
 - WETLAND LINE
 - CONTOUR LINE
 - DRAINAGE MARK OUT LINE
 - SANITARY SEWER MARK OUT LINE

PROJECT LOCATION MAP

SCALE: ###

SOURCE: X

| Date | Description | No. |
|--|------------------------------|-----|
| REVISIONS | | |
| IAN C. WISURI DATE SIGNED MA Professional Land Surveyor #47403 | | |
| LANGAN Langan MA, Inc. 888 Boylston Street, Ste 510 Boston, MA 02199 T: 617.824.9100 F: 617.824.9101 www.langan.com | | |
| Project St. John's Episcopal Church 257 Pleasant Street Franklin Norfolk County Massachusetts | | |
| Drawing Title BOUNDARY & TOPOGRAPHIC PLAN | | |
| Project No. 151019601 | VB101 Sheet 1 of 1 | |
| Date 5/26/2021 | | |
| Drawn By SG | | |
| Checked By ICW | | |

