

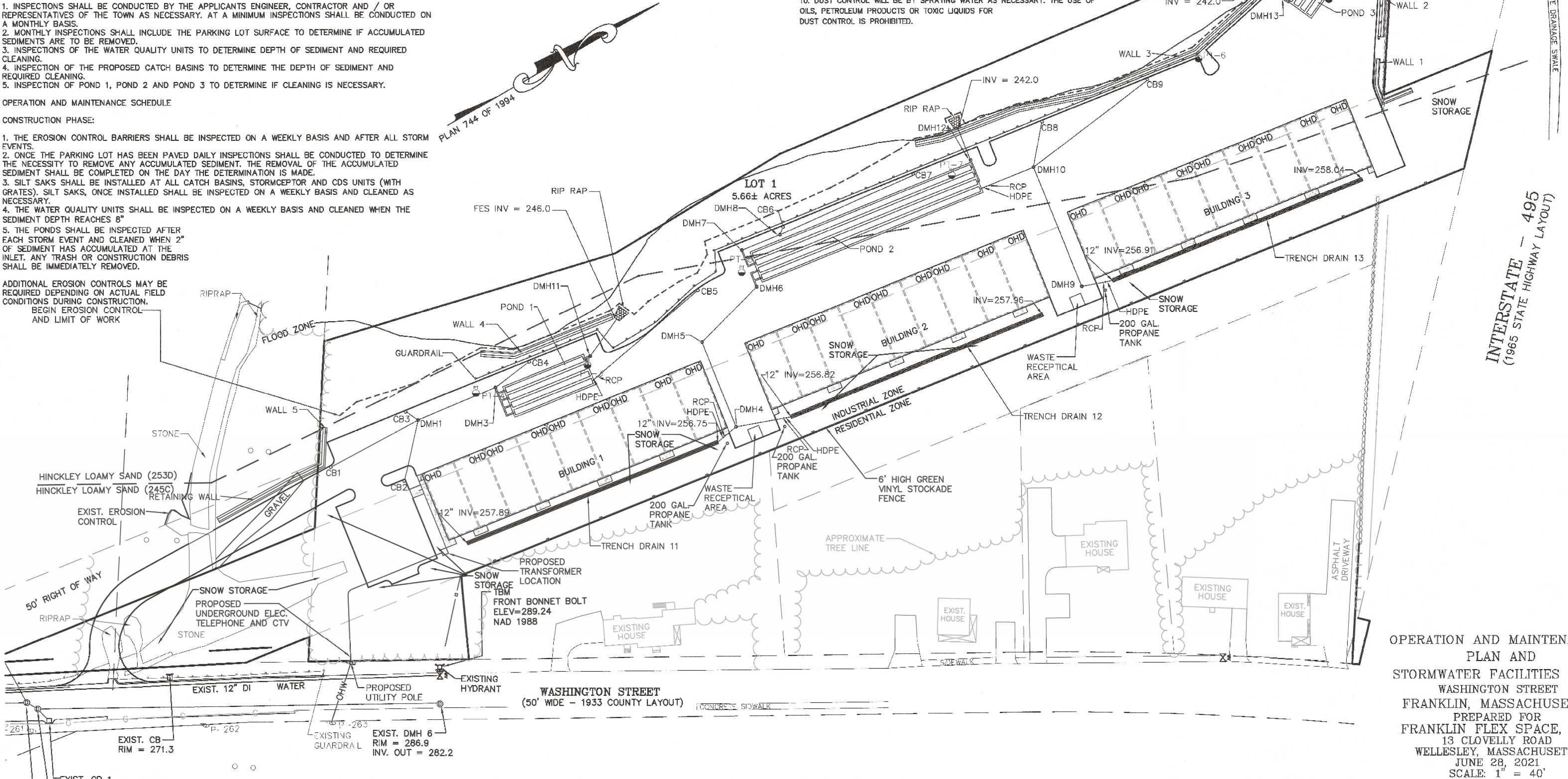
OPERATION AND MAINTENANCE PLAN

- CONSTRUCTION PHASE
1. THE OWNERS REPRESENTATIVE, NAME AND PHONE NUMBER TO BE PROVIDED, SHALL BE THE RESPONSIBLE PARTY FOR THE STORMWATER MAINTENANCE PLAN.
 2. THE SITE CONTRACTOR SHALL INSPECT ALL EROSION CONTROL MEASURES WEEKLY AND AFTER ALL RAIN EVENTS.
 3. SEDIMENT SHALL BE REMOVED FROM COMPOST SOCK WHEN A MAXIMUM DEPTH OF 6" IS OBSERVED OR AS NEEDED.
 4. CONSTRUCTION ENTRY MAT SHALL BE INSPECTED WEEKLY AND AFTER ALL RAIN EVENTS. SEE DETAIL FOR MAINTENANCE REQUIREMENTS.
 5. DAMAGED OR DETERIORATED COMPOST SOCK AREAS SHALL BE REPLACED IMMEDIATELY.
 6. EROSION CONTROL MEASURES SHALL REMAIN IN PLACE UNTIL CONSTRUCTION IS COMPLETED AND ALL DISTURBED AREAS ARE STABILIZED.
 7. SILT SAKS SHALL BE INSTALLED AT ALL CATCH BASINS EXISTING AND PROPOSED AND SHALL BE INSPECTED WEEKLY AND AFTER ALL RAIN EVENTS.
 8. CLEANING OF SILT SAKS SHALL BE COMPLETED AS NECESSARY.
 9. THE STORMCEPTOR AND CDS UNIT SHALL BE CLEANED WITH A VACUUM TRUCK.

- INSPECTION AND MAINTENANCE SCHEDULE:
1. INSPECTIONS SHALL BE CONDUCTED BY THE APPLICANTS ENGINEER, CONTRACTOR AND / OR REPRESENTATIVES OF THE TOWN AS NECESSARY. AT A MINIMUM INSPECTIONS SHALL BE CONDUCTED ON A MONTHLY BASIS.
 2. MONTHLY INSPECTIONS SHALL INCLUDE THE PARKING LOT SURFACE TO DETERMINE IF ACCUMULATED SEDIMENTS ARE TO BE REMOVED.
 3. INSPECTIONS OF THE WATER QUALITY UNITS TO DETERMINE DEPTH OF SEDIMENT AND REQUIRED CLEANING.
 4. INSPECTION OF THE PROPOSED CATCH BASINS TO DETERMINE THE DEPTH OF SEDIMENT AND REQUIRED CLEANING.
 5. INSPECTION OF POND 1, POND 2 AND POND 3 TO DETERMINE IF CLEANING IS NECESSARY.

- OPERATION AND MAINTENANCE SCHEDULE
- CONSTRUCTION PHASE:
1. THE EROSION CONTROL BARRIERS SHALL BE INSPECTED ON A WEEKLY BASIS AND AFTER ALL STORM EVENTS.
 2. ONCE THE PARKING LOT HAS BEEN PAVED DAILY INSPECTIONS SHALL BE CONDUCTED TO DETERMINE THE NECESSITY TO REMOVE ANY ACCUMULATED SEDIMENT. THE REMOVAL OF THE ACCUMULATED SEDIMENT SHALL BE COMPLETED ON THE DAY THE DETERMINATION IS MADE.
 3. SILT SAKS SHALL BE INSTALLED AT ALL CATCH BASINS, STORMCEPTOR AND CDS UNITS (WITH GRATES). SILT SAKS, ONCE INSTALLED SHALL BE INSPECTED ON A WEEKLY BASIS AND CLEANED AS NECESSARY.
 4. THE WATER QUALITY UNITS SHALL BE INSPECTED ON A WEEKLY BASIS AND CLEANED WHEN THE SEDIMENT DEPTH REACHES 8"
 5. THE PONDS SHALL BE INSPECTED AFTER EACH STORM EVENT AND CLEANED WHEN 2" OF SEDIMENT HAS ACCUMULATED AT THE INLET. ANY TRASH OR CONSTRUCTION DEBRIS SHALL BE IMMEDIATELY REMOVED.

ADDITIONAL EROSION CONTROLS MAY BE REQUIRED DEPENDING ON ACTUAL FIELD CONDITIONS DURING CONSTRUCTION. BEGIN EROSION CONTROL AND LIMIT OF WORK

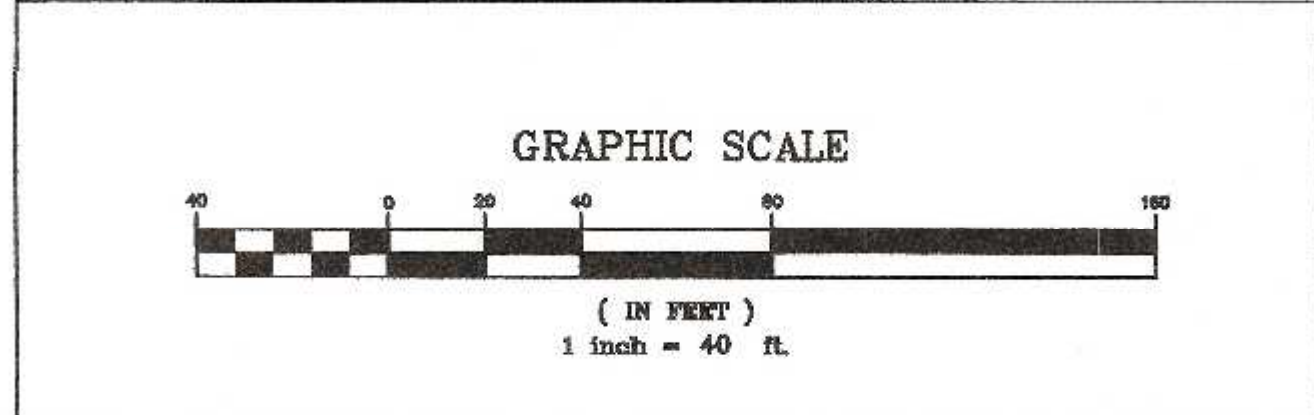


EROSION CONTROL NOTES:

1. COMPOST SOCK SHALL BE INSTALLED PRIOR TO TREE CLEARING OR SITE WORK COMMENCING.
2. ENTRY MAT TO BE INSTALLED.
3. COMPOST SOCK TO REMAIN IN CONTACT WITH THE EARTH. REPAIR OR RESET AS NECESSARY.
4. REFER TO CONSTRUCTION SEQUENCE FOR SLOPE GREATER THAN 3' HORIZONTAL TO 1' VERTICAL.
5. WATER QUALITY UNITS, CATCH BASINS, UNDERGROUND PONDS AND PARKING AREA TO BE CLEANED ONCE CONSTRUCTION IS COMPLETED.
6. ALL SEDIMENT COLLECTED DURING THE CONSTRUCTION PHASE OR POST CONSTRUCTION PHASE SHALL BE DISPOSED OF TO AN APPROVED LOCATION.
7. AFTER ALL DISTURBED AREAS HAVE BEEN STABILIZED THE EROSION CONTROL MEASURES SHALL BE REMOVED.
8. DAMAGED OR DETERIORATED EROSION CONTROL MEASURES SHALL BE REPAIRED OR REPLACED IMMEDIATELY AFTER THEY HAVE BEEN IDENTIFIED.
9. THE CONTRACTOR SHALL BE RESPONSIBLE FOR ALL INSPECTIONS.
10. DUST CONTROL WILL BE BY SPRAYING WATER AS NECESSARY. THE USE OF OILS, PETROLEUM PRODUCTS OR TOXIC LIQUIDS FOR DUST CONTROL IS PROHIBITED.

SITE PLAN APPROVAL
REQUIRED
FRANKLIN PLANNING BOARD

DATE



NO.	DATE	DESCRIPTION	BY

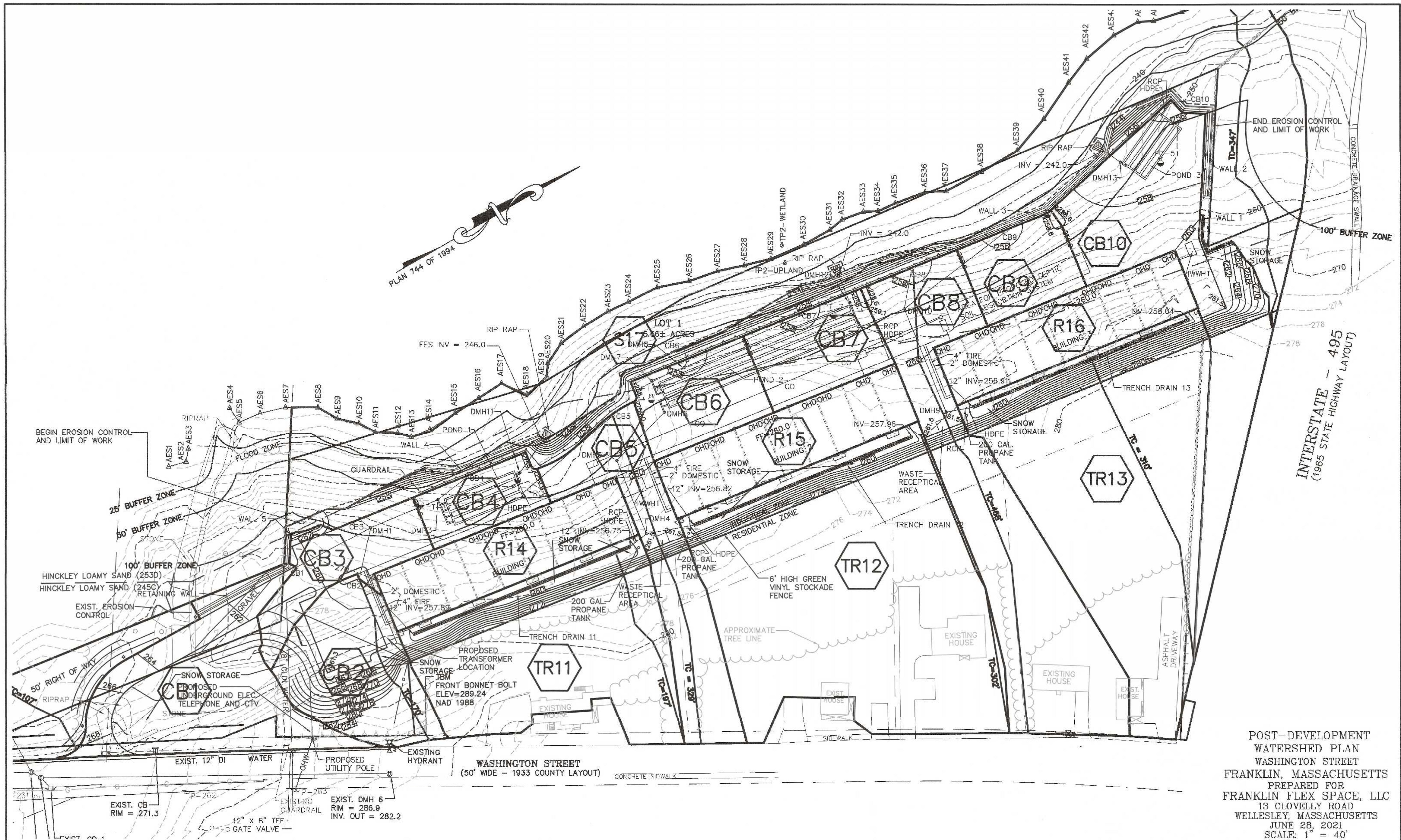
DATE	FIELD BY:	INT. BL
5/21		
6/21	CALCS BY:	RRG
6/21	DESIGNED BY:	RRG
6/21	DRAWN BY:	COMP
6/21	CHECKED BY:	CAQ

UNITED CONSULTANTS INC.

850 FRANKLIN STREET SUITE 11D
WRENTHAM, MASSACHUSETTS 02093
508-384-8560 FAX 508-384-8566

DATE	JUNE 28, 2021
SCALE	1" = 40'
PROJECT	UC1502
SHEET	1 of 1

OPERATION AND MAINTENANCE
PLAN AND
STORMWATER FACILITIES PLAN
WASHINGTON STREET
FRANKLIN, MASSACHUSETTS
PREPARED FOR
FRANKLIN FLEX SPACE, LLC
13 CLOVELLY ROAD
WELLESLEY, MASSACHUSETTS
JUNE 28, 2021
SCALE: 1" = 40'

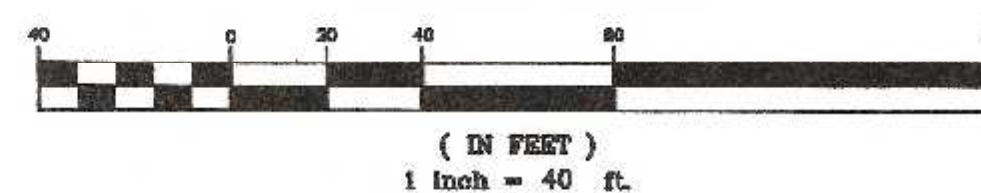


POST-DEVELOPMENT
WATERSHED PLAN
WASHINGTON STREET
FRANKLIN, MASSACHUSETTS
PREPARED FOR
FRANKLIN FLEX SPACE, LLC
13 CLOVELLY ROAD
WELLESLEY, MASSACHUSETTS
JUNE 28, 2021
SCALE: 1" = 40'

SITE PLAN APPROVAL
REQUIRED
FRANKLIN PLANNING BOARD

DATE

GRAPHIC SCALE



NO.	DATE	DESCRIPTION	BY

DATE	FIELD BY:	INT.
5/21	BL	
BK#	FIELD BOOK	PG#
6/21	RRG	63
DATE	DESIGNED BY:	
6/21	RRG	
DATE	DRAWN BY:	COMP
6/21	COMP	
DATE	CHECKED BY:	CAQ
6/21	CAQ	

UNITED
CONSULTANTS
INC.
850 FRANKLIN STREET SUITE 11D
WRENTHAM, MASSACHUSETTS 02093
508-384-6560 FAX 508-384-6566

DATE	JUNE 28, 2021
SCALE	1" = 40'
PROJECT	UC1502
SHEET	1 of 1